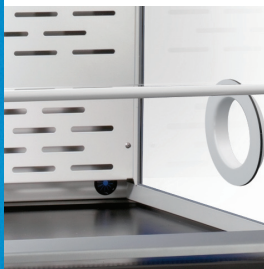
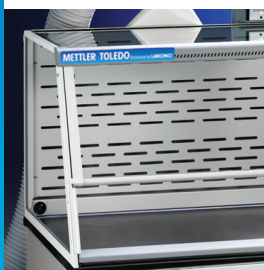


## METTLER TOLEDO Enclosures by Labconco



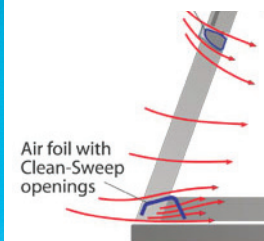
### Greatest Stability

A chemical resistant marble base provides the greatest amount of stability.



### Static-dissipative Materials

Epoxy-coated aluminum and steel and tempered safety glass dissipate static, reducing potential for weighing errors.



Air foil with Clean-Sweep openings

### Maximum Containment

Patented Clean-Sweep™ air foil allows air to sweep the work surface to maximize containment.



### Built-In Airflow Monitor

Alerts the user to face velocities outside the preset range. Ensures operator safety at all times.



### Safety Enclosures

#### Protection During Weighing Processes

METTLER TOLEDO Enclosures by Labconco are specifically designed to protect the analyst during the weighing process. The patented Clean-Sweep™ air foil will maximize the containment of powders, particulates, and fumes to ensure operator safety. The ergonomic design and interior dimensions make this product ideal for micro and analytical balances, and the granite work surface will provide the greatest stability for your products.

## Technical Data

### Dimensions

- 89174-752: 36' w x 29.0" d x 37.1" h
- 89174-756: 36.0" w x 29.0" d x 28.6" h
- 89174-754: 36.0" w x 29.0" d x 28.6" h
- Internal working depth: 23.4"

### Construction

- Glacier white and gray, dry powder epoxy-coated aluminum frame and steel rear plenum and baffle.
- Granite work surface
- 1/4" thick tempered safety glass front sash, sides, and top
- Ergonomic air foil with aerodynamic Clean-Sweep™ airflow openings maximizes containment
- Upper containment sash foil directs contaminants away from the operator
- Upper dilution air supply sweeps clean air to the back of the sash to keep contaminants away from the operator
- 8" sash opening limits exhaust demand

## Order Information

| Description  | VWR Part No.     |
|--|------------------|
| 3' W Filtered Enclosure with built-in blower   | <b>89174-752</b> |
| 3' W HEPA System Enclosure including separate FilterMate Portable Exhauster                                    | <b>89174-756</b> |
| 3' W Direct Enclosure<br>Requires ducting or FilterMate  | <b>89174-754</b> |
| 4' W Filtered Enclosure with built-in blower   | <b>89204-576</b> |
| 4' W HEPA System Enclosure including separate FilterMate Portable Exhauster                                    | <b>89204-580</b> |
| 4' W Direct Enclosure<br>Requires ducting or FilterMate  | <b>89204-578</b> |
| FilterMate Portable Exhauster for use with Carbon Filter. Filter not included.                                 | <b>89174-758</b> |
| FilterMate Portable Exhauster for use with HEPA & Carbon Filter. HEPA Filter included, Carbon Filter required. | <b>89174-760</b> |

## Accessories

| Description                               | VWR Part No.     |
|---|------------------|
| Organic Carbon Filter for FilterMate      | <b>89174-762</b> |
| Formaldehyde Carbon Filter for FilterMate | <b>89174-764</b> |
| Ammonia Carbon Filter for FilterMate      | <b>89174-766</b> |
| HEPA Filter for FilterMate                | <b>89174-768</b> |

### Alarm

- Supplied with Guardian Airflow Monitor
- Continuously monitors airflow with a Green LED that glows when airflow is within range
- A Red LED glows and an audible alarm sounds when the airflow is outside the set point range

### Testing

- SEFA 1-2002
- Modified ASHRAE 110-1995
- ANSI Z9.5-1993

### All Systems Include

- Granite work surface
- Guardian airflow monitor
- Waste chute
- Necessary ductwork

| Description                                      | VWR Part No.     |
|--|------------------|
| HEPA Filter for 3' Filtered System               | <b>89174-770</b> |
| 3' Base Stand - Fixed Feet                       | <b>89174-782</b> |
| 4' Base Stand - Fixed Feet                       | <b>89215-308</b> |
| Fluorescent Light Kit for 3930310 and 3970100    | <b>89174-784</b> |
| Replacement Bag-In / Bag-Out for FilterMate      | <b>89174-772</b> |
| Replacement Bag-In / Bag-Out for Filtered System | <b>89174-774</b> |
| Organic Carbon Filter – 3' Filtered System       | <b>89174-776</b> |
| Formaldehyde Carbon Filter – 3' Filtered System  | <b>89174-778</b> |
| Ammonia Carbon Filter - 3' Filtered System       | <b>89174-780</b> |
| Utility Shelves                                  | <b>89174-786</b> |
| Tissue Holder                                    | <b>89174-790</b> |
| Bottle Holder                                    | <b>89174-788</b> |
| Duct Transition Adapter – Upper – 5" ID          | <b>89174-792</b> |
| Duct Transition Adapter – Upper – 6" OD          | <b>89174-794</b> |
| Canopy Connection for 3' Filtered System         | <b>89174-800</b> |
| Printer Stand for Filtered System                | <b>89174-802</b> |
| Vibration Isolation Pads – 2" x 2" – Set of 6    | <b>89174-804</b> |
| Waste Chute Stopper                              | <b>89215-312</b> |
| Waste Chute Bags                                 | <b>89204-586</b> |

[www.mt.com/balance-enclosures](http://www.mt.com/balance-enclosures)

For more information



1.800.932.5000 | [vwr.com](http://vwr.com)

Prices and product details are current when published; subject to change without notice. | Certain products may be limited by federal, state, provincial, or local regulations. | VWR makes no claims or warranties concerning sustainable/green products. Any claims concerning sustainable/green products are the sole claims of the manufacturer and not those of VWR International, LLC. All prices are in US dollars unless otherwise noted. Offers valid in US and Canada, void where prohibited by law or company policy, while supplies last. | VWR, the VWR logo and variations on the foregoing are registered (®) or unregistered trademarks and service marks, of VWR International, LLC and its related companies. All other marks referenced are registered by their respective owner(s). | Visit [vwr.com](http://vwr.com) to view our privacy policy, trademark owners and additional disclaimers. © 2012 VWR