



MDF-DU503VHA-PA | 76637-148

VIP® ECO SMART

ENERGY STAR® Certified
Natural Refrigerant -86°C Freezer

MDF-DU503VH-PA, 220V | 76637-150
MDF-DU503VHA-PA, 115V | 76637-148

18.6 cu.ft. | 528 L



Independently tested and documented, the ENERGY STAR® Certified VIP® ECO SMART delivers the lowest daily energy usage of any ultra-low temperature freezer of its size: 4.99 kWh per day¹. Purpose-designed for the temperature uniformity and stability required for the life sciences.

Performance and Reliability

Next generation engineering harnesses the power of inverter compressor technology to yield greater temperature uniformity. Reserve refrigeration power delivers fast temperature recovery following door openings. Performance and reliability is never compromised when it comes to storing your valued products.

Efficient Energy Consumption¹

This freezer delivers lower energy consumption without compromising performance. The VIP ECO SMART uses 30% less energy than other leading ENERGY STAR listed freezers.

- 0.27 kWh/cu.ft. Daily Energy Consumption
 - 4.99 kWh/day, Steady State at -80°C
 - 4.06 kWh/day, Steady State at -70°C
- Temperature Uniformity
- ±3.0°C at -80°C
 - ±3.0°C at -70°C

Security Control and Monitoring

An eye level, door mounted 10.1-inch high resolution LCD touchscreen allows full user control. A USB port makes transferring logged data to a PC convenient. All performance attributes are displayed and an internal temperature log can be expressed in graphic form over time.



Frost Mitigation

Simplified one-handed operation maintains the integrity of the door seal to assure energy efficiency, resulting in less frost build up and maintenance. Perimeter heater under the gasket allows for gentle warmth reducing ice buildup. The EZlatch handle is the centerpiece of a holistic access and frost mitigation system.



Natural Refrigerants

Natural refrigerants minimize environmental impact and allow for greater efficiency, resulting in less energy consumption and less heat output.



Controlled Freezer Access

Know who entered the freezer and when. Track how long the door was open.

- 3 Ways to Lock
- Facial recognition
 - Keypad
 - Proximity card (Optional)*

**Available in the US and Canada only*

VIP^{ECO SMART} -86°C ULT Upright Freezer

MDF-DU503VH-PA, 220V | **76637-150**
 MDF-DU503VHA-PA, 115V | **76637-148**



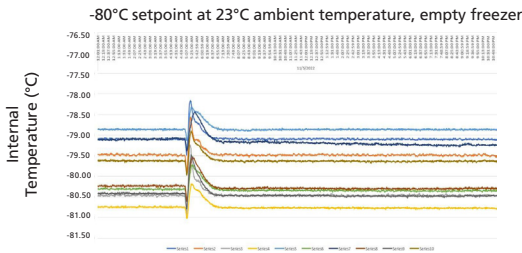
The outer door gasket is easily removed and replaced without tools while the freezer remains in operation.

Model MDF-DU503VHA-PA | **76637-148** shown with three shelves supplied standard. Additional shelves available.

SMART Performance

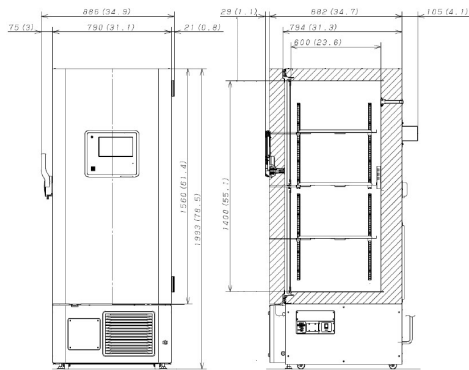
Inverter driven compressors with SMART control allow for superior uniformity by only running compressors at slower speed under steady state conditions. Proprietary algorithms give the control that allows extremely tight uniformity.

Temperature Uniformity Data:



Dimensions

Unit : inch | mm



VWR.COM

delivered by **VWR**[®]

Prices, product, and/or services details are current when published and subject to change without notice. | Certain products or services may be limited by federal, state, provincial, or local regulations. | VWR, part of Avantor, makes no claims or warranties concerning sustainable/green products. Any claims concerning sustainable/green products are the sole claims of the manufacturer and not those of VWR International, LLC and/or Avantor, Inc. or affiliates. All prices are in US dollars unless otherwise noted. Offers valid in US, void where prohibited by law or company policy, while supplies last. | Trademarks are owned by Avantor, Inc. or its affiliates, unless otherwise noted. | Visit vwr.com to view our privacy policy, trademark owners, and additional disclaimers. © 2023 Avantor, Inc. All rights reserved.

VWR, part of Avantor is an authorized distributor for PHC Corporation of North America.

Model Number	MDF-DU503VH-PA 76637-150	MDF-DU503VHA-PA 76637-148	
External Dimensions (W x D x H) ¹⁾	31.1 x 34.7 x 78.5 790 x 882 x 1993		
Internal Dimensions (W x D x H)	24.8 x 23.6 x 55.1 630 x 600 x 1400		
Volume	cu.ft. liters 18.6 528		
Net Weight	lbs kg 531 241		
2" box and Racks- Capacity	Box Rack 384 16		
3" box and Racks- Capacity	Box Rack 256 16		
Performance			
Temperature Control Range	°C	-40 to -86	
Uniformity ²⁾	°C	±3.0 (-80 Set point)	
Power Consumption	kWh/Day	4.99 (-80°C Steady State)	
BTU Nominal	Per Hour	710	
Noise Level ³⁾	dB(A)	52	
Ambient Temperature Operating Range	°C	+5 to +30	
Control			
Controller	Microprocessor with non-volatile memory, USB connectivity, IoT Ready [®]		
Digital Temperature Display	LCD Touchscreen		
Controller Security	Screen lock w/ password protection, facial recognition, NFC ⁵⁾		
Temperature Sensor	RTD		
Refrigeration			
Cooling Method	Cold Wall (Synchronized variable speed cascade system)		
Compressors	High Stage Low Stage	750 W Variable 750 W Variable	
Refrigerant Type (Natural Refrigerant)	High Stage Low Stage	R-290 R-170	
Insulation	Rigid polyurethane foam (PUF) + VIP Plus vacuum insulated panels		
Construction			
Exterior Material	Painted steel		
Interior Material	Painted steel		
Outer Door	qty	1 lock with set of 2 keys and electronic lock (provision for optional pad lock)	
Inner Doors	qty	2 insulated stainless steel with latch	
Shelves	qty	3 (adjustable)	
Shelf Dimensions (W x D)	inches mm	24.2 x 21 615 x 534	
Max. Load per Shelf	lbs kg	110 50	
Access Ports, Qty, Position, Diameter	qty	3: upper wall (back-up system), bottom left (recorder sensor), bottom right (access) 0.6 in 17mm	
Casters Leveling Legs	qty	4 2	
Vacuum Release	qty	1 Auto	
Alarms (V= Visual Alarm, B= Buzzer Alarm, R= Remote Alarm, A= Adjustable, L= Logged, D= Settable delay)			
Power Failure	V-B-R-L		
Temperature (High and Low)	V-B-R-L-A		
Sensor Failure	V-B-R-L		
Door Open	V-B-L		
Maintenance Alert	V-L		
Remote Alarm Contacts	DC 30V 2A (normally open, normally closed, common)		
Electrical and Noise Level			
Power Supply		220V, NEMA 6-15P, 60 Hz 8ft cord length	115V, NEMA 5-15P, 60 Hz 8ft cord length
Max Amps	6		8.5
Options			
Circular Type Chart Recorders	MTRC954* 97014-882		
Chart Paper/ Ink Pen	C7100386REV 76490-366 / R252* 76452-714		
Backup System	MDF-UB9-PW 76637-156 MDF-UB9-PW-LN2 76538-808		
Inner Door Kit with Smaller Doors	qty	(4) MDF-5ID4-PW 76501-148 (5) MDF-5ID5-PW 76501-150	
Proximity Cards	qty	(5) MTR-IC-PW 76637-158	
NFC Module	MTR-NFC-PW 76637-160		
Optional Communication System			
Wireless, Cloud-Based, Automatic Data Management	LabAlert [®] *		
4-20mA Output Module	MTR420MAC- Self Powered MTR420MAL- Loop Powered*		
Certifications and Warranty			
Certification	QPS Listed and ENERGY STAR		
Warranty ⁶⁾	5 years parts and labor		

¹⁾ Exterior dimensions of cabinet excluding handle, rear stand-off brackets and other external projections.

²⁾ 3rd party testing lab using 9 temperature points with 75°F ambient temperature.

³⁾ Nominal value, background noise 20 dB(A).

⁴⁾ Unit software ready for future IoT options.

⁵⁾ NFC is an optional unlock method for Electronic Lock, accessory part number MTR-NFC-PW | **76637-160** and MTR-IC-PW | **76637-158**; US and Canada only.

⁶⁾ Current warranty offered at time of printing and may be subject to change; US and Canada only.

*Manufactured by others

Specifications are subject to change without notice.

Performance data herein is based on independent testing at time of publication.