



Distributor  
GE Healthcare

# New Generation Size Exclusion Chromatography (SEC) Columns

**Maximized resolution and optimized run time for small-scale preparative purification and analysis**

Our new generation size exclusion chromatography columns called "Increase" are designed for high resolution in small-scale preparative purification and analysis for sample volumes up to 500µL. They deliver improved performance compared to predecessor columns:

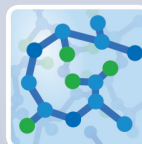
- Reduced run time with maintained resolution for time saving or increased throughput
- Higher resolution for improved protein purity and analysis data
- Higher lot-to-lot consistency for better reproducibility

## In 2017, GE expands the range of new generation SEC columns with Superdex™ 30 Increase

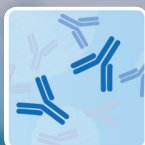
- Four choices of new generation SEC resins for small-scale preparative purification and analysis
- Superdex 30 Increase is the replacement for Superdex Peptide columns



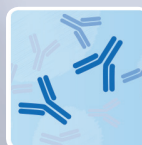
**Superdex Superdex 30 Increase**  
Peptides and other small biomolecules  
Fractionation range  
Mr ~ 100 to 7,000



**Superdex 200 Increase**  
mAb and other antibodies  
Fractionation range  
Mr ~ 10,000 to 600,000



**Superdex 75 Increase**  
Recombinant tagged proteins  
Fractionation range  
Mr ~ 3,000 to 70,000



**Superose™ 6 Increase**  
Larger proteins and protein complexes  
Fractionation range  
Mr ~ 5,000 to 5,000,000



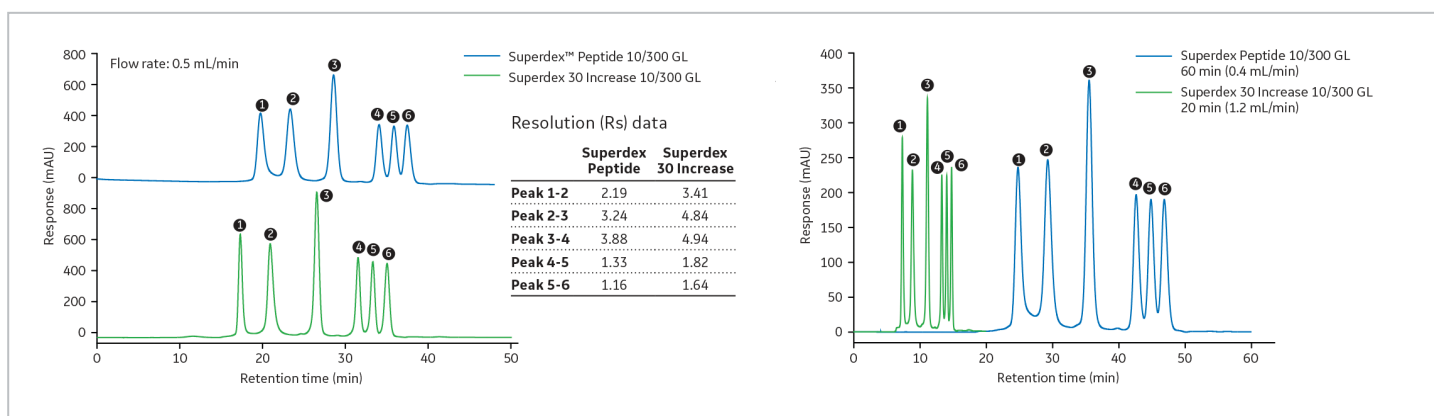
Distributor  
GE Healthcare

## New generation SEC columns deliver improved performance compared to predecessor columns

The agarose resins have been optimized to deliver improved performance compared with their predecessors (smaller and more rigid beads, narrower particle size distribution, higher selectivity).

### Higher resolution at the same flow rate

### Faster separation with the same resolution



**Fig 1.** Compared with Superdex Peptide, new generation Superdex 30 Increase delivers up to 50% higher resolution at the same flow rate, or three times faster separation with the same resolution.

## Three column dimensions for new generation SEC columns to fit different needs



### 10mm × 300mm (Tricorn™ 10/300 GL)

- High resolution analysis (25–500µL sample volume)
- Small-scale preparative runs (milligram amount)



### 3.2mm × 300mm (Precision Column 3.2/300)

- High resolution analysis (4–50µL sample volume)
- Small-scale preparative runs (microgram [µg] amount)
- Low sample and buffer Consumption



### 5mm × 150mm (Tricorn 5/150)

- Purity check
- Rapid screening
- Low sample (4–50µL sample volume) and buffer consumption

These columns are recommended for use with ÄKTA™ pure 25 systems and traditional HPLC systems. Transparency of the columns enable an easy inspection of the resin bed.

## Ordering Information

Description	Dimension, mm	Cat. No.	Qty
Superdex 30 Increase*	10 × 300	76015-026	Each
Superdex 30 Increase*	3.2 × 300	76015-028	Each
Superdex 200 Increase	10 × 300	89497-272	Each
Superdex 200 Increase	3.2 × 300	89497-276	Each
Superdex 200 Increase	5 × 150	89497-274	Each

\* These products are not available in Canada. Please contact your VWR Sales Rep to learn about easy access to similar options in your region.

