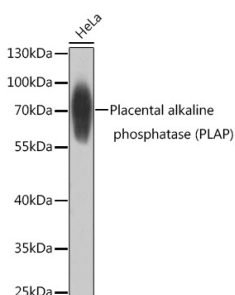


# Anti-Placental alkaline phosphatase (phospho LAP) Antibody (A306517)

## Specifications:

Name:	Anti-Placental alkaline phosphatase (phospho LAP) Antibody
Description:	Rabbit polyclonal antibody to Placental alkaline phosphatase (PLAP).
Applications:	WB, IP
Recommended Dilutions:	WB: 1:500-1:2,000, IP: 50-1:200
Reactivity:	Human
Immunogen:	Recombinant fusion protein containing a sequence corresponding to amino acids 260-460 of human Placental alkaline phosphatase (PLAP) (NP_001623.3).
Sequence:	LAKRQGARYVWNRTQLMQASLDPSVTHLMGLFEPGDMKYEIHRDSTLDPSLMEMTEAA LRLLSRNPRGFFLFVEGGRIDHGHESRAYRALTETIMFDDAIERAGQLTSEEDTL VTADHSHVFSFGGYPLRGSSIFGLAPGKARDRKAYTVLLYGNGPGYVLKDGARPDVTE SESGSPEYRQQSAVPLDEETHAGEDVA
Host:	Rabbit
Clonality:	Polyclonal
Isotype:	IgG
Conjugate:	Unconjugated
Purification:	Affinity purification.
Product Form:	Liquid
Formulation:	Supplied in Phosphate Buffered Saline, pH 7.3, with 50% Glycerol and 0.02% Sodium Azide.
Storage:	Shipped at 4°C. Upon delivery aliquot and store at -20°C. Avoid freeze / thaw cycles.
Disclaimer:	This product is for research use only. It is not intended for diagnostic or therapeutic use.

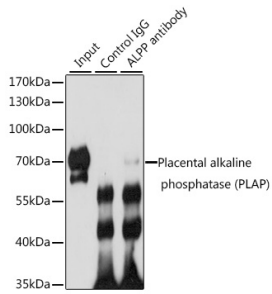
## Images:



Western blot analysis of extracts of HeLa cells, using Anti-Placental alkaline phosphatase (phospho LAP) Antibody (A306517) at 1:1,000 dilution. The secondary antibody was Goat Anti-Rabbit IgG H&L Antibody (HRP) at 1:10,000 dilution. Lysates/proteins were present at 25µg per lane. The blocking buffer used was 3% non-fat dry milk in TBST. Detection was with a ECL Basic Kit. Exposure time: 1s.

## Anti-Placental alkaline phosphatase (phospho LAP) Antibody (A306517)

Images continued:



Immunoprecipitation analysis of 200 $\mu$ g extracts of HeLa cells using 3 $\mu$ g of Anti-Placental alkaline phosphatase (phospho LAP) Antibody (A306517). This Western blot was performed on the immunoprecipitate using Anti-Placental alkaline phosphatase (phospho LAP) Antibody (A306517) at a dilution of 1:1000.