

Datasheet for 201-401-B84S**CXCL10 Antibody****Overview**

Description:	Anti-Bovine CXCL10 (Rabbit) Antibody - 201-401-B84S
Item No.:	201-401-B84S
Size:	25 µL
Applications:	ELISA, WB
Reactivity:	Bovine (Bos Taurus), Capra hircus (Goat), Ovis aries (Sheep)
Host Species:	Rabbit

Product Details

Background:	CXCL10 is a secreted chemotactic cytokine for monocytes and T-lymphocytes. It is involved in the inflammatory response. CXCL10 can be upregulated in response to infection. It binds to CXCR3.
Synonyms:	rabbit anti-CXCL10 Antibody, IP-10, C-X-C motif chemokine 10, Small-inducible cytokine B10
Host Species:	Rabbit
Clonality:	Polyclonal
Format:	IgG

Target Details

Gene Name:	CXCL10
Reactivity:	Bovine (Bos Taurus), Capra hircus (Goat), Ovis aries (Sheep)
Immunogen Type:	Recombinant Protein
Immunogen:	This protein-A purified antibody was prepared from whole rabbit serum produced by repeated immunizations with a recombinant protein raised in yeast, corresponding to the 83 amino acids of the mature bovine CXCL10 protein.

Purity/Specificity: This product was Protein-A purified from monospecific antiserum by chromatography. This antibody is specific for bovine CXCL10 protein. A BLAST analysis was used to suggest cross-reactivity with CXCL10 from bovine based on 100% homology with the immunizing sequence. Partial reactivity is expected against sheep and goat based on 94-95% homology. Cross-reactivity with CXCL10 from other sources has not been determined.

Relevant Links:

- [UniProtKB - Q2KIQ8](#)
- [NCBI - NP_001040016](#)
- [GenelD - 615107](#)

Application Details

Tested Applications: ELISA, WB

Application Note: This protein-A purified CXCL10 antibody has been tested by ELISA and Western blotting. Specific conditions for reactivity should be optimized by the end user. Expect a band approximately 9.3 kDa in size corresponding to bovine CXCL10 protein by western blotting in the appropriate cell lysate or extract.

Assay Dilutions: All assays should be optimized by the user. Recommended dilutions (if any) may be listed below.

ELISA: 1:10,000

WB: 1 µg/mL

Formulation

Physical State: Liquid (sterile filtered)

Concentration: 1.17 mg/mL by UV absorbance at 280 nm

Buffer: 0.02 M Potassium Phosphate, 0.15 M Sodium Chloride, pH 7.2

Preservative: 0.01% (w/v) Sodium Azide

Stabilizer: None

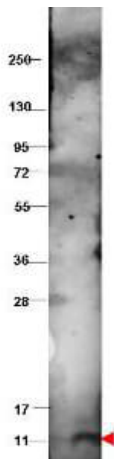
Shipping & Handling

Shipping Condition: Dry Ice

Storage Condition: Store vial at -20° C or below prior to opening. This vial contains a relatively low volume of reagent (25 µL). To minimize loss of volume dilute 1:10 by adding 225 µL of the buffer stated above directly to the vial. Recap, mix thoroughly and briefly centrifuge to collect the volume at the bottom of the vial. Use this intermediate dilution when calculating final dilutions as recommended below. Store the vial at -20°C or below after dilution. Avoid cycles of freezing and thawing.

Expiration: Expiration date is three (3) months from date of receipt.

Images



Western Blot

Western blot using Rockland's protein-A purified anti-bovine CXCL10 antibody shows detection of recombinant bovine CXCL10 at 9.3 kDa (arrowhead) raised in yeast. The protein was purified and resolved by SDS-PAGE, then transferred to PVDF membrane. Membrane was blocked with 3% BSA (BSA-30, diluted 1:10), and probed with 1 µg/mL primary antibody overnight at 4°C. After washing, membrane was probed with IRDye800™ Conjugated Goat Anti-Rabbit IgG (p/n 611-132-122) for 45 min at room temperature.

Disclaimer

This product is for research use only and is not intended for therapeutic or diagnostic applications. Please contact a technical service representative for more information. All products of animal origin manufactured by Rockland Immunochemicals are derived from starting materials of North American origin. Collection was performed in United States Department of Agriculture (USDA) inspected facilities and all materials have been inspected and certified to be free of disease and suitable for exportation. All properties listed are typical characteristics and are not specifications. All suggestions and data are offered in good faith but without guarantee as conditions and methods of use of our products are beyond our control. All claims must be made within 30 days following the date of delivery. The prospective user must determine the suitability of our materials before adopting them on a commercial scale. Suggested uses of our products are not recommendations to use our products in violation of any patent or as a license under any patent of Rockland Immunochemicals, Inc. If you require a commercial license to use this material and do not have one, then return this material, unopened to: Rockland Inc., P.O. BOX 5199, Limerick, Pennsylvania, USA.