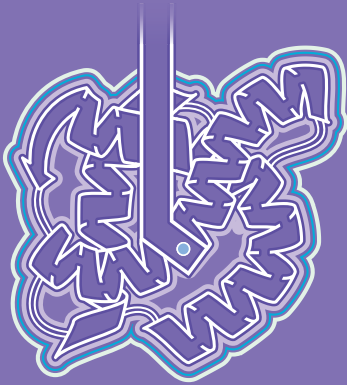
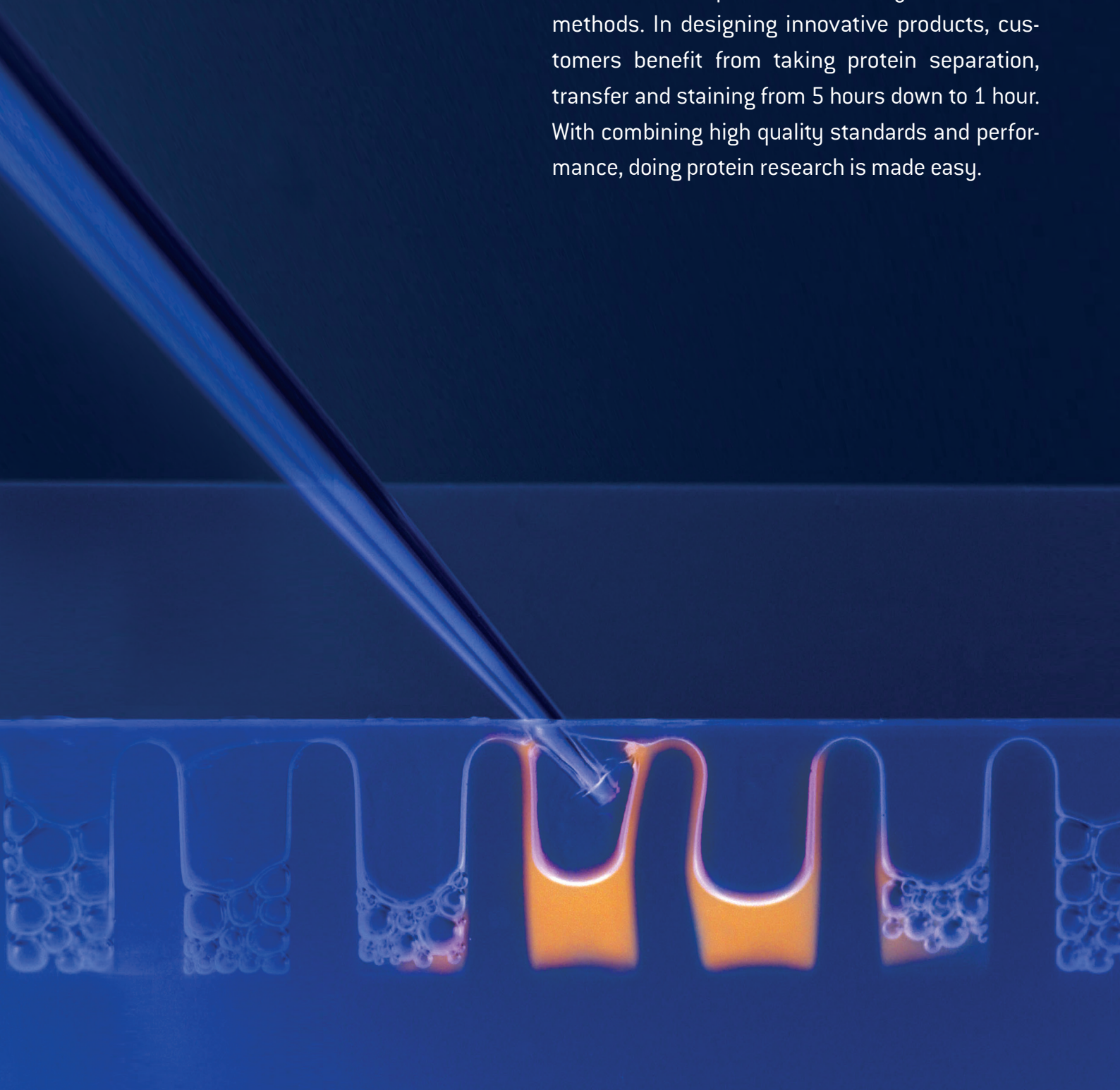


Speed Past the Twists and Turns in Protein Research



Protein Electrophoresis from Lonza

With over 50 years experience in the separation of molecular fragments, Lonza offers novel protein solutions to help researchers beyond classical methods. In designing innovative products, customers benefit from taking protein separation, transfer and staining from 5 hours down to 1 hour. With combining high quality standards and performance, doing protein research is made easy.



Content

Introduction	2
PAGEr™ EX Fast Protein Staining Kit	3
PAGEr™ EX Fast Protein Transfer Kit	3
PAGEr™ EX Gels	4
ProSieve™ EX Safe Stain	5
ProSieve™ EX Running Buffer	6
ProSieve™ EX Western Blot Transfer Buffer	6
PAGEr™ Minigel Chamber	7
PAGEr™ Precast Gels	8
ProSieve™ Color Protein Markers	10
ProSieve™ Protein Markers	10
ProSieve™ ProTrack™ Dual Color Protein Loading Buffer	11
ProSieve™ Blue Protein Staining Solution	11
SYPRO® Protein Gel Stains	12
AccuGENE™ Electrophoresis Buffers	13

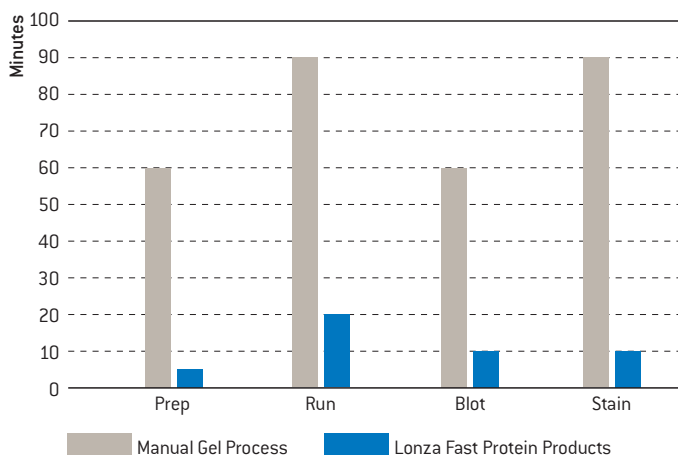
A Faster Solution For Protein Separation, Transfer, Blot, and Staining

Lonza's PAGE[™] EX and ProSieve[™] EX Fast Protein products address the need for faster, more efficient, and reliable solutions for protein electrophoresis. Ultimately, these products take protein separation, Western blot and transfer, plus staining from over 5 hours down to less than 1 hour.

Each individual component offers a unique solution and can be incorporated into your current protein process:

- **PAGE[™] EX Gels** are designed for fast 20–25 minute separation with a 12 month shelf life using ProSieve[™] EX Running Buffer
- **ProSieve[™] EX Safe Stain** takes your staining process down to just 1 step in 10 minutes
- **ProSieve[™] EX Western Blot Transfer Buffer** can be used with any Tris-glycine gels for a 10 minute transfer
- **ProSieve[™] EX Running Buffer** provides <30 minute separation for any Tris-glycine gels
- **ProSieve[™] QuadColor[™] Protein Marker** provides accurate confirmation of protein transfer in the range of 4.6 kDa–300 kDa

Lonza's Fast Protein Products save time in each stage of protein processing.



Introductory Kits for Protein Transfer, Blotting, and Staining

Separate, blot and stain faster!

PAGEr™ EX Protein Staining Kits and PAGEr™ EX Protein Transfer/Western Blot Kits are trial-size kits designed to combine the total solution for the ultimate fast separation with staining and transfer in less than 30 minutes.

These convenient all-in-one kits are a low cost option designed to save you time and simplify your protein electrophoresis process.

PAGEr™ EX Protein Staining Kit

- 10 minute, 1 step, safe protein staining method, with a 20 minute run
- This kit contains: 2 PAGEr™ EX Gels, ProSieve™ EX Running Buffer, ProSieve™ EX Safe Stain and a ProSieve™ QuadColor™ Marker



PAGEr™ EX Protein Transfer/Western Blot Kit

- 10 minute protein transfer time, with a 20 minute run.
- This kit includes: 2 PAGEr™ EX Gels, ProSieve™ EX Running Buffer, ProSieve™ EX Western Blot Transfer Buffer and a ProSieve™ QuadColor™ Marker

Ordering information

VWR Cat. no.	Product	Description	Size	Well
89235-748	PAGEr™ EX Protein Staining Kit	Mid/High range 10–350 kDa	9 × 10 cm	12
89235-762	PAGEr™ EX Protein Staining Kit	Mid/High range 10–350 kDa	10 × 10 cm	12
89235-756	PAGEr™ EX Protein Staining Kit	Low/Mid range 5–225 kDa	9 × 10 cm	12
89235-758	PAGEr™ EX Protein Staining Kit	Low/Mid range 5–225 kDa	10 × 10 cm	12
89235-760	PAGEr™ EX Protein Transfer/Western Blot Kit	Mid/High range 10–350 kDa	9 × 10 cm	12
89235-750	PAGEr™ EX Protein Transfer/Western Blot Kit	Mid/High range 10–350 kDa	10 × 10 cm	12
89235-752	PAGEr™ EX Protein Transfer/Western Blot Kit	Low/Mid range 5–225 kDa	9 × 10 cm	12
89235-754	PAGEr™ EX Protein Transfer/Western Blot Kit	Low/Mid range 5–225 kDa	10 × 10 cm	12

PAGEr™ EX Gels

Fast, long shelf life option

PAGEr™ EX Gels are the ultimate protein precast gel that offer faster separation in less than 30 minutes, 12 month shelf life, high resolution quality, and unique size separation range that consolidates band resolution to only few gels.

Benefits include:

- Fast separation, 20–25 minutes
- 1 year shelf life
- Designed for use with ProSieve™ EX Running Buffer
- Fit most chambers
- Easy to use



PAGEr™ EX Gels performance and specifications

Separation	Equivalent concentration	Well formats	Dimensions	Buffer	Chambers
Mid/High range 10–350 kDa	4–12%	12 well or 16 well	9 × 10 cm or 10 × 10 cm	ProSieve™ EX Running Buffer	Most standard protein chambers
Low/Mid range 5–225 kDa	10%	12 well or 16 well	9 × 10 cm or 10 × 10 cm		

Chamber compatibility – See the table on page 9

Ordering information

VWR Cat. no.	Product	Description	Size	Well
89235-740	PAGEr™ EX Gels, 10 gels/box	Mid/High range 10–350 kDa	10 × 10 cm	12
89235-732	PAGEr™ EX Gels, 10 gels/box	Mid/High range 10–350 kDa	9 × 10 cm	12
89235-742	PAGEr™ EX Gels, 10 gels/box	Mid/High range 10–350 kDa	10 × 10 cm	16
89235-734	PAGEr™ EX Gels, 10 gels/box	Mid/High range 10–350 kDa	9 × 10 cm	16
89235-736	PAGEr™ EX Gels, 10 gels/box	Low/Mid range 5–225 kDa	10 × 10 cm	12
89235-728	PAGEr™ EX Gels, 10 gels/box	Low/Mid range 5–225 kDa	9 × 10 cm	12
89235-738	PAGEr™ EX Gels, 10 gels/box	Low/Mid range 5–225 kDa	10 × 10 cm	16
89235-730	PAGEr™ EX Gels, 10 gels/box	Low/Mid range 5–225 kDa	9 × 10 cm	16

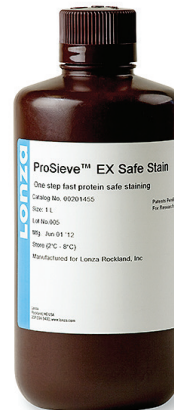
ProSieve™ EX Safe Stain

Revolutionary, fast and safe

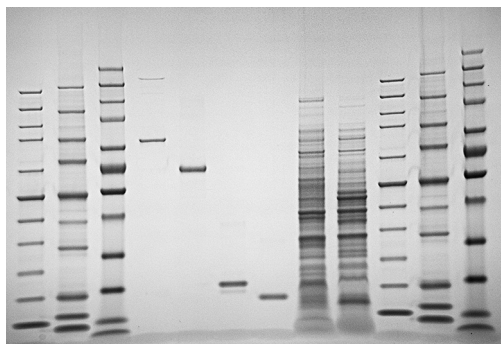
This fast staining product is revolutionary for speed and process improvements. With independent features that make the product unique, choosing the right stain for your research is easy.

ProSieve™ EX Safe Stain

- Ultimate fast solution that provides a 1 step, safe stain in 10 minutes



ProSieve™ EX Safe Stain with PAGEr™ EX Gels offers better results in half the time



20 minute run with PAGEr™ EX Gels and ProSieve™ EX Running Buffer at 250V, 10 minutes ProSieve™ EX Safe Stain , (total 30 minutes)

Ordering information

VWR Cat. no.	Product	Size
89235-746	ProSieve™ EX Safe Stain	1 L

ProSieve™ EX Running and Western Blot Transfer Buffers

Simple, sharp and fast

New protein separation and Western blot transfer buffers are modified formulations that perform just like Tris-glycine, but significantly accelerate run and transfer times without compromising results. The Laemmli gel system, based on Tris-glycine SDS buffers, is the recognized as the gold standard for analyzing proteins by PAGE. For over 40 years, efforts to improve the time and efficiency of this method have been limited...until now.

Overall, the standard 2-hour method for protein separation and transfer can be reduced to less than 30 minutes including:

- Separation in less than 30 minutes
- Transfer in 10 minutes
- Compatibility with standard gel systems and protocols
- Razor sharp resolution



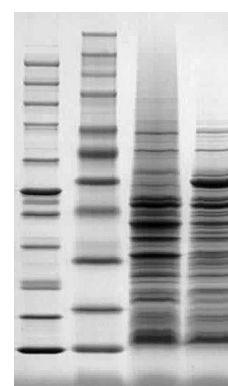
10 minute transfer with ProSieve™ EX Buffer



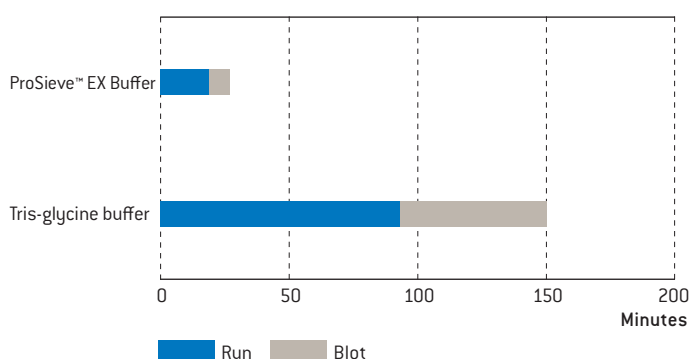
60 minute transfer with standard transfer buffer



15 minute run with ProSieve™ EX Buffer



40 minute run with Tris-glycine Buffer



Ordering information

VWR Cat. no.	Product	Size
71002-838	ProSieve™ EX Western Blot/Transfer Buffer	1 L
71002-836	ProSieve™ EX Running Buffer	1 L
89233-928	ProSieve™ EX Running Buffer	4 L
89125-526	ProSieve™ QuadColor™ Protein Marker	500 µL

PAGEr™ Minigel Chamber

Sharp performance and simplicity

PAGEr™ Minigel Chamber

The PAGEr™ Minigel Chamber is the easiest chamber you will ever use. The simple, lock-in-place core design assures a tight, flat fit. No need to remove the core, simply insert gels, close the clamps, fill with buffer and run. Runs one or two PAGEr™ Gels and accommodates a tank blotting module.

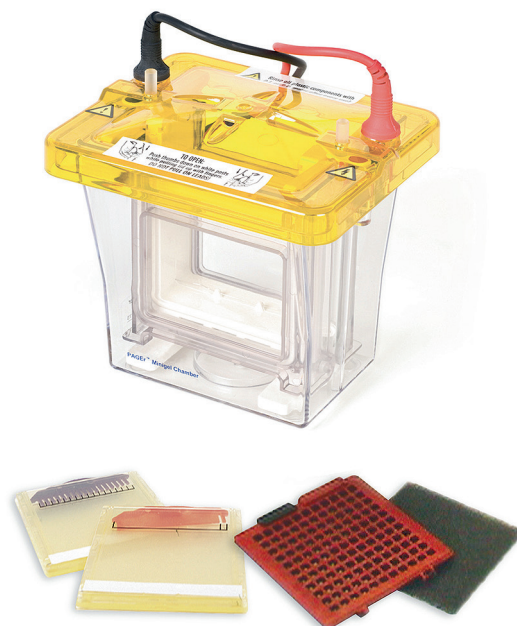
- Easy-to-use core eliminates leaking and minimizes handling
- Perfect fit with 9 cm × 10 cm and 10 cm × 10 cm PAGEr™ EX and PAGEr™ Gels
- Even electrical force ensures straight lanes

PAGEr™ Blot Module

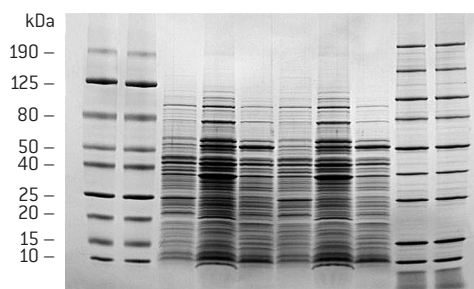
The PAGEr™ Blot Module works directly in the PAGEr™ Minigel Chamber and provides exceptional blotting with a fast, simple protocol.

- Color-coded cassettes ensure proper orientation of the gel during transfer
- Transfer time – 90 minutes or less
- Hinged cassette design for easy assembly

The system can be purchased as a kit, including the PAGEr™ Minigel Chamber, PAGEr™ Blot Module and sponge pads, or components may be purchased separately.



PAGEr™ Gel Minigel Chamber performance



ProSieve™ Color Protein Markers and *E. coli* lysate run on a PAGEr™ Gel at 200V for 60 minutes in the PAGEr™ Minigel Chamber.

Ordering information

VWR Cat. no.	Product
12002-206	PAGEr™ Minigel Chamber
12002-208	PAGEr™ Tank Blot Module
12002-210	PAGEr™ Minigel Chamber and Blot Module Kit*

*Includes chamber, blotting cassette, and sponge pads. (8/pack). Contact your VWR representative for information about replacements parts.

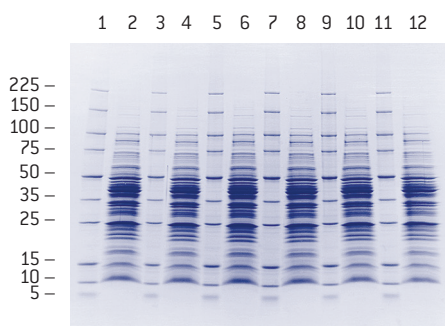
PAGEr™ Precast Gels

Sharp, reliable, easy-to-use

PAGEr™ Gels are easy-to-use protein Tris-glycine minigels that offer sharp resolution and consistent protein transfer. Choose from multiple options for denatured and native protein separation over a wide molecular weight range, in an array of configurations in both 9 cm × 10 cm and 10 cm × 10 cm sizes to fit popular chambers.

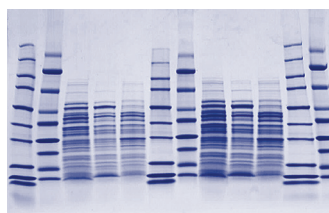
- Razor sharp resolution – crisp separation of proteins 5 kDa – 250 kDa
- Easy-to-use – marked sample lanes for easy loading and simple twist open design
- Versatile – multiple well formats and gel concentrations in 2 sizes to fit most chambers
- Tris-glycine buffer – traditional Laemmli separation
- Fresh – we ship fresh gels every time for guaranteed performance

Protein separation with a PAGEr™ Precast Gel

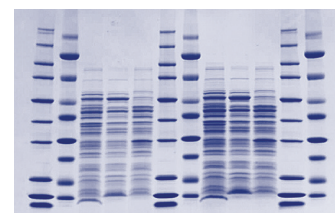


Separations on a 4 – 20% PAGEr™ Precast Gel.
ProSieve™ Protein Markers lanes 1, 3, 5, 7, 9, and 11. *E. coli* extract in lanes 2, 4, 6, 8, 10 and 12. Proteins detected by Coomassie™ Brilliant Blue stain.

Competitor gel



PAGEr™ Precast Gel



Resolution comparison of 4 – 20% Coomassie™ stained gels. Samples include a repeating pattern of ProSieve™ Protein Marker, ProSieve™ Color Protein Marker and *E. coli* lysates.

Ordering information – PAGEr™ Gels



10 gels per box/ Concentration	Cassette size [cm]	VWR Cat. no. 2D-well+	VWR Cat. no. 8 + 1 well*	VWR Cat. no. 10-well	VWR Cat. no. 12-well	VWR Cat. no. 16-well	VWR Cat. no. 17-well*
4 – 12% gradient	9 x 10 10 x 10	– –	– –	12001-064 12001-222	12001-068 12001-226	12001-072 12001-230	– –
4 – 20% gradient	9 x 10 10 x 10	– 12001-266	12001-102 12001-260	12001-046 12001-204	12001-034 12001-192	12001-058 12001-216	12001-096 12001-254
8 – 16% gradient	9 x 10 10 x 10	– –	– –	12001-062 12001-220	12001-066 12001-224	12001-070 12001-228	– –
10 – 20% gradient	9 x 10 10 x 10	– –	– –	12001-048 12001-206	12001-036 12001-194	12001-060 12001-218	– –
7.5%	9 x 10 10 x 10	– –	– –	12001-038 12001-196	12001-026 12001-184	12001-050 12001-208	– –
10%	9 x 10 10 x 10	– –	– –	12001-040 12001-198	12001-028 12001-186	12001-052 12001-210	– –
12%	9 x 10 10 x 10	– –	– –	12001-042 12001-200	12001-030 12001-188	12001-054 12001-212	– –
15%	9 x 10 10 x 10	– –	– –	12001-044 12001-202	12001-032 12001-190	12001-056 12001-214	– –

* 8+1-well and 17-well gels are multichannel pipette compatible

Specifications

Dimensions	Cassette thickness	Gel dimensions
9 cm × 10 cm (L × W)	0.49 cm	7.1 × 8.3 (L × W) × 0.1 cm
10 cm × 10 cm (L × W)	0.55 cm	8.1 × 8.3 (L × W) × 0.1 cm
Gel matrix/buffer:	Polyacrylamide/Tris-glycine Note: Gels do not contain SDS. Add SDS to sample buffer to create denaturing running conditions.	
Stacking gel:	4% stacking gel	
Well format:	2D well, 8+1 well*, 10 well, 12 well, 16 well, 17 well* *multichannel pipette compatible well formats	
Cassette:	Plastic	
Storage/shelf life:	2 °C – 8 °C for 3 months from date of manufacture Guaranteed 10 weeks upon receipt	

Chamber compatibility

Manufacturer & model	Gel size 9 × 10 cm	Gel size 10 × 10 cm
Lonza		
PAGEr™ Minigel Chamber	■	■
FisherBiotech®		
Fisher FB-VE 10-1	–	■
Fisher FB-VE 12-1	–	■
Fisher EC 120-2	■	■
Invitrogen/Novex®		
XCell SureLock® MiniCell	■	■
XCell I & II	■	■
Bio-Rad®		
Mini-PROTEAN® I, II & 3	■	–
Ready Gel® Cell	■	–
Hoefer® Mighty Small		
SE 250	■	■
SE 260	■	■
SE 280	■	■
Biometra®		
Mini V	■	–
Sigma Aldrich		
Mini Techware	■	■
CBS Scientific		
MGV System	■	■
Owl Separation Systems		
Penguin™ P8DS-1	–	■
Daiichi/ISS		
2 & 6 System	–	■
Zaxis		
System 200	–	■

Some chambers may require adjustment for optimal fit with PAGEr™ Gels.
Contact your VWR representative for details.

Separation range in PAGEr™ Tris-glycine gels

Polyacrylamide concentration	Size separation range
7.5%	50 kDa – 200 kDa
10%	25 kDa – 200 kDa
12%	20 kDa – 200 kDa
15%	10 kDa – 50 kDa
4 – 20%	5 kDa – 200 kDa
10 – 20%	5 kDa – 150 kDa
4 – 12%	25 kDa – 250 kDa
8 – 16%	15 kDa – 200 kDa

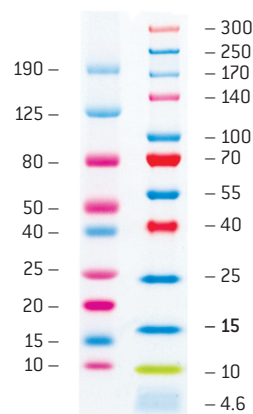
ProSieve™ Color Protein Markers

Sharp performance and simplicity

ProSieve™ Color Protein Markers are an easy method for monitoring protein separation prior to staining, and provide accurate confirmation of protein transfer in Western blotting.

- Convenient – just add water and load
- Sharp – multi-colored, readily identifiable band pattern
- Verify protein transfer following Western blotting

ProSieve™ Color Protein Marker



Typical Results

Ordering information

VWR Cat. no.	Product	Range	Size
12002-114	ProSieve™ Color Protein Marker (lyophilized, just add water and load)	10 kDa–190 kDa	100 µL
12001-806	ProSieve™ Color Protein Marker (lyophilized, just add water and load)	10 kDa–190 kDa	500 µL
89125-526	ProSieve™ QuadColor™ Protein Marker (thaw and load)	4.6 kDa–300 kDa	500 µL

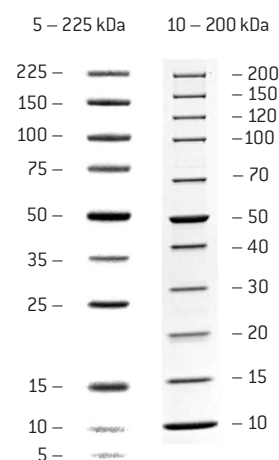
ProSieve™ Protein Markers

Sharp, accurate sizing of proteins

ProSieve™ Protein Markers are designed for accurate sizing of proteins 5 kDa to 225 kDa. The 50 kDa band is double-intensity for easy identification.

- Simple – wide distribution of exact masses simplifies size determination
- Accurate – recombinant proteins do not contain oligosaccharides that can cause anomalous migration, heterogeneous “fuzzy” bands, and inaccurate size estimation

Performance of ProSieve™ Protein Markers



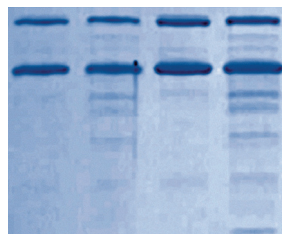
Ordering information

VWR Cat. no.	Product	Range	Size
12001-358	ProSieve™ Protein Marker	5 kDa–225 kDa	500 µL
89125-530	ProSieve™ Unstained Protein Marker II	10 kDa–200 kDa	500 µL

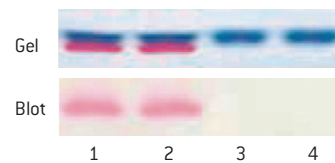
ProSieve™ ProTrack™ Dual Color Protein Loading Buffer

Protect and track protein samples

- Protects proteins from degradation during sample prep
- Two colors for tracking electrophoresis progress (blue) and monitoring Western transfer (pink)
- Contains SDS and DTT for complete protein denaturing



Lanes 1 and 3 are proteins protected by ProSieve™ ProTrack™ Dual Color Loading Buffer, lanes 2 and 4 are proteins prepared and run in a standard loading buffer.



ProSieve™ ProTrack™ Blue Dye monitors protein separation on the gel, while the pink dye confirms transfer of the proteins onto the blot.

Ordering information

VWR Cat. no.	Product	Applications	Size
89125-520	ProSieve™ ProTrack™ Dual Color Protein Loading Buffer	1000 loads	5 mL

SYPRO® Protein Gel Stains

Fast, sensitive, easy-to-use fluorescent gel stains

SYPRO® Stains are exquisitely sensitive and simple fluorescent protein gel stains that rival the sensitivity of the best silver stains for a range of applications from 2D gel staining to staining gels prior to western blotting.

- SYPRO® Ruby Stain is the ideal stain for 2D analysis, offering a linear quantitation range of over three orders of magnitude
- SYPRO® Red Stain is the fastest, easiest stain for routine protein detection, requiring no fixation or destain
- SYPRO® Tangerine Stain does not interfere with protein activity and is ideal for staining gels prior to Western transfer
- SYPRO® Ruby Blot Stain offers sensitivity levels that rival colloidal stains for detecting proteins on blots

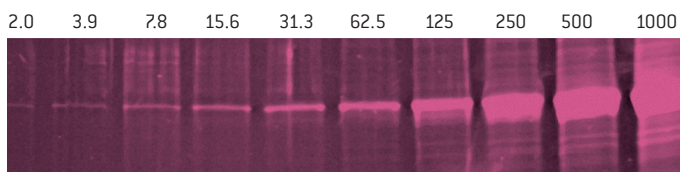
Select the Best Stain for your Application

Application	SYPRO® Ruby	SYPRO® Tangerine	SYPRO® Red
High performance staining	■	–	■
Staining prior to western blotting	–	■	–
2D Electrophoresis	■	–	–
Edman microsequencing	■	■	■
Mass spectrometry	■	■	■
Quantitation	■	■	■
Zymography	■	■	■
Electroelution	■	■	■
Membrane staining	■	–	–
Protein expression	■	–	–
Detection prior to immunostaining	■	■	–
Difficult to stain proteins	■	–	–
IEF Gels	■	–	–

Ordering information

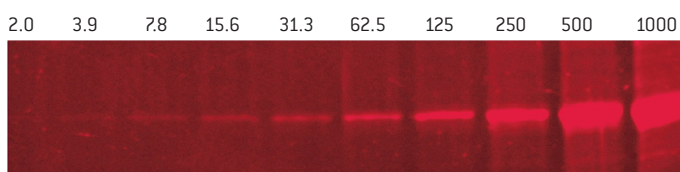
VWR Cat. no.	Product	Size
12001-740	SYPRO® Ruby Protein Gel Stain	1 L
12001-744	SYPRO® Ruby Protein Gel Stain	200 mL
12001-746	SYPRO® Ruby Protein Blot Stain	200 mL
12001-808	SYPRO® Tangerine Protein Gel Stain	500 µL
12001-930	SYPRO® Red Protein Gel Stain	10 x 50 µL
12001-932	SYPRO® Red Protein Gel Stain	500 µL
12001-928	SYPRO® Protein Gel Stain Photographic Filter	3" square

SYPRO® Ruby Stain



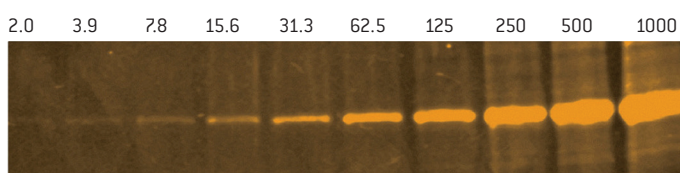
SYPRO® Red Stain

Diluted in PBS (Polaroid® photo UV light)

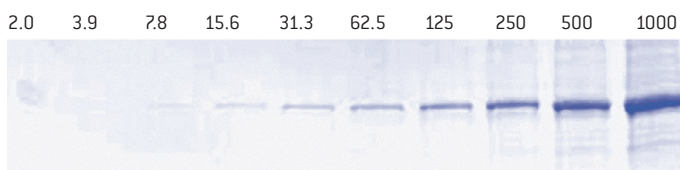


SYPRO® Tangerine Stain

Diluted in PBS (Polaroid® photo UV light)



Coomassie™ Brilliant Blue Stain



Serial dilutions of Lonza's ProSieve™ Protein Marker 50 kDa band on 12% PAGEr™ Gold Precast Gels. Protein level indicated in nanograms.

AccuGENE™ Electrophoresis Buffers

Optimized performance from a closed reagent system

AccuGENE™ Buffers are prepared with high quality reagents and formulated to match PAGE™ Precast Gels. These buffers use 18 megohm water. Products are filtered using a 0.2-micron filter.

- Reliable – manufactured according to strict quality control standards to ensure lot-to-lot consistency
- Flexible – customized solutions are available to meet individual needs

Ordering information

VWR Cat. no.	Product	Size
12001-122	AccuGENE™ 10X Tris-glycine Buffer 0.25 M tris base, 1.92 M glycine	1 L
12001-506	AccuGENE™ 10X Tris-glycine Buffer 0.25 M tris base, 1.92 M glycine	4 L
12001-124	AccuGENE™ 10X Tris-glycine SDS Buffer 0.25 M tris base, 1.92 M glycine 1% SDS	1 L
12001-508	AccuGENE™ 10X Tris-glycine SDS Buffer 0.25 M tris base, 1.92 M glycine 1% SDS	4 L



Lonza Walkersville, Inc. – Walkersville, MD 21793

For research use only. Not for use in diagnostic procedures. SYPRO is a trademark of Molecular Probes, Inc. Bio-Rad, MiniProtean and Ready Gel are trademarks of Bio-Rad Laboratories, Inc. Penguin is a trademark of Thermo Fisher Scientific, Inc. NOVEX and XCell SureLock are trademarks of Life Technologies Corporation. Coomassie is a trademark of Imperial Chemicals Industries PLC. Biometra is a trademark of Biometra Biomedizinische Analytik GmbH. FisherBiotech is a trademark of Fisher Scientific Company. Hoefer is a trademark of Hoefer Scientific Instruments. Polaroid is a registered trademark of Polaroid Corporation

ProSieve™ QuadColor™ Protein Marker and ProSieve™ EX Stain are manufactured for Lonza. ProSieve™ Buffer technology is licensed from DGel Electrosystem, patents pending.

All trademarks belong to Lonza or its affiliates or to their respective third party owners. The information contained herein is believed to be correct and corresponds to the latest state of scientific and technical knowledge. However, no warranty is made, either expressed or implied, regarding its accuracy or the results to be obtained from the use of such information and no warranty is expressed or implied concerning the use of these products. The buyer assumes all risks of use and/or handling. Any user must make his own determination and satisfy himself that the products supplied by Lonza Group Ltd or its affiliates and the information and recommendations given by Lonza Group Ltd or its affiliates are (i) suitable for intended process or purpose, (ii) in compliance with environmental, health and safety regulations, and (iii) will not infringe any third party's intellectual property rights.

©2016 Lonza. All rights reserved.
MB-BR002 01/16

**1.800.932.5000**
vwr.com



Prices and product details are current when published; subject to change without notice. | Certain products may be limited by federal, state, provincial, or local regulations. | VWR makes no claims or warranties concerning sustainable/green products. Any claims concerning sustainable/green products are the sole claims of the manufacturer and not those of VWR International, LLC. All prices are in US dollars unless otherwise noted. Offers valid in US, void where prohibited by law or company policy, while supplies last. | VWR, the VWR logo and variations on the foregoing are registered (®) or unregistered trademarks and service marks of VWR International, LLC and its related companies. All other marks referenced are registered by their respective owner(s). | Visit vwr.com to view our privacy policy, trademark owners and additional disclaimers. ©2016 VWR International, LLC. All rights reserved.