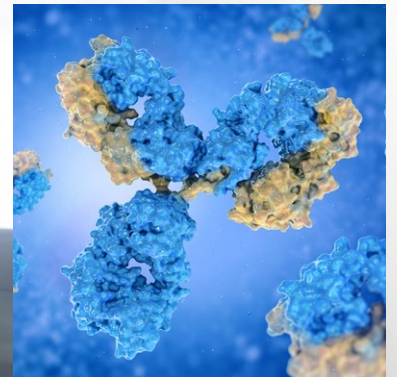


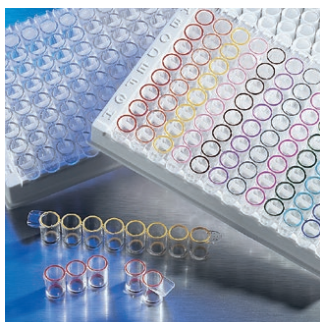
Corning[®] ELISA Microplates for Biochemical and Cell-based Applications

Quality, Support, and Service Every Step of the Way



CORNING

Corning® ELISA Microplates



Corning Stripwell microplates

ELISA assays are accurate, highly sensitive, and specific in identifying protein species. ELISA products are used in a wide range of immunodiagnostic (antigen/antibody) and DNA-based diagnostic test kits. They may also be used for cell-based ELISAs, an immunocytochemistry method to quantify target protein or post-translational modifications of the target protein in cultured cells.

Corning is a leader in manufacturing high-quality, high-performance ELISA microplates and 1 x 8 Corning Stripwell™ microplates for laboratory assays. Corning ELISA microplates have superior lot-to-lot and intra-well consistency for reproducible and reliable results. ELISA microplates enable a common laboratory procedure to be carried out on multiple samples simultaneously. Popular formats include 8-well strips, 96-well microplates, and 384-well microplates.

ELISA microplates are available in clear, black, or white polystyrene with a variety of surface chemistry choices to suit every type of assay:

SURFACE CHEMISTRIES

Medium Binding Surface

- ▶ Hydrophobic
- ▶ Ideal for large, hydrophobic biomolecules (>20kD)
- ▶ Binding capacity: ~250 ng IgG/cm²

High Binding Surface

- ▶ Hydrophobic and ionic (negatively charged)
- ▶ Ideal for positively charged biomolecules (>10kD)
- ▶ Binding capacity: ~500 ng IgG/cm²

Corning DNA-BIND® Surface

- ▶ N-oxy succinimide
- ▶ Allows covalent immobilization to amine groups
- ▶ Ideal for DNA, proteins, and small peptides

Corning Sulfhydryl-BIND Surface

- ▶ Maleimide
- ▶ Allows covalent immobilization to sulfhydryl groups
- ▶ Ideal for biomolecules possessing an accessible sulfhydryl group

Corning Carbo-BIND Surface

- ▶ Hydrazide
- ▶ Allows covalent immobilization to CHO moieties
- ▶ Ideal for antibodies and Fab fragments

Corning Nonbinding Surface (NBS)

- ▶ Non-ionic hydrophilic surface (polyethylene oxide-like)
- ▶ Inhibits hydrophobic and ionic interactions to reduce binding
- ▶ Enhances signal-to-noise in homogeneous assays

CELL-BASED ASSAY SURFACES

Tissue Culture-treated Surface

- ▶ Hydrophilic and negatively charged due to incorporation of oxygen ions
- ▶ For attachment and growth of anchorage-dependent cell lines

Corning CellBIND® Surface

- ▶ Hydrophilic and negatively charged
- ▶ Enhances cell attachment under difficult conditions
- ▶ Quickly adapts cells to reduced serum or serum-free conditions
- ▶ Improves overall attachment and yield

Corning BioCoat™ Surfaces

- ▶ Biological coatings of highly purified extracellular matrix (ECM) proteins
- ▶ Enhances attachment of transformed cell lines, transfected cells (including HEK-293), as well as a variety of primary and stem cells
- ▶ Helps cells stay attached during assay processing
- ▶ Surfaces include Poly-D-Lysine, Fibronectin, Collagen I, Gelatin, Laminin, and Corning Matrigel® matrix

Corning PureCoat™ Amine Surfaces

- ▶ Hydrophilic and ionic (positively charged)
- ▶ Ideal for small negatively charged biomolecules
- ▶ For covalent immobilization, use bifunctional crosslinkers

Corning® 96-well ELISA Microplates



VWR Cat. No.	Corning Cat. No.	Type	Color	Surface	Qty/ Pk	Qty/ Cs
29442-396	3797	Round-bottom	Clear	Medium binding	25	100
25581-050	3366	Round-bottom	Clear	High binding	25	100
75874-852	3789A	Round-bottom	White	Medium binding	25	100
29442-922	3792	Round-bottom	Black	Medium binding	25	100
29444-288	3367	Round-bottom	Clear	Medium binding	1	50
29445-154	3788	Round-bottom, with lid	Clear	Medium binding	20	100
29442-392	3795	Round-bottom	Clear	Medium binding	25	100
29442-398	3798	Round-bottom	Clear	Medium binding	25	100
29442-274	2507	Flat-bottom	Clear	Carbo-BIND	1	50
29442-278	2509	Flat-bottom	Clear	Sulfhydryl-BIND	1	50
25381-052	3368	Easy Wash, flat-bottom	Clear	Medium binding	25	100
25381-054	3369	Easy Wash, flat-bottom	Clear	High binding	25	100
29442-316	3591	Flat-bottom	Clear	Medium binding	1	50
29442-314	3590	Flat-bottom	Clear	High binding	1	100
29442-070	9017	Flat-bottom	Clear	Medium binding	25	100
29442-322	9018	Flat-bottom	Clear	High binding	25	100
89501-318*	9018BC*	Flat-bottom, with generic bar code	Clear	High binding	25	100
29444-456	3361	Flat-bottom, with lid	Clear	High binding	20	100
25381-056	3370	Flat-bottom, with lid	Clear	Medium binding	20	100
29442-050	3585	Flat-bottom, with lid**	Clear	TC-treated	5	50
29442-058	3598	Flat-bottom, with lid	Clear	TC-treated	5	100
29444-016	3912	Flat-bottom	White	Medium binding	25	100
29444-020	3922	Flat-bottom	White	High binding	25	100
29444-018	3915	Flat-bottom	Black	Medium binding	25	100
29444-022	3925	Flat-bottom	Black	High binding	25	100
89091-018	3632	Flat-bottom	White/Clear	Medium binding	25	100
89091-010	3631	Flat-bottom	Black/Clear	Medium binding	25	100
29444-037	3601	Flat-bottom	Black/Clear	High binding	25	100
29444-008	3603	Flat-bottom, with lid	Black/Clear	TC-treated	1	48
29444-010	3610	Flat-bottom, with lid	White/Clear	TC-treated	1	48
66025-630	3340	Flat-bottom, with lid	Black/Clear	Corning CellBIND®	5	50
29444-320	3695	Flat-bottom, half area	Clear	Medium binding	25	100
29444-318	3690	Flat-bottom, half area	Clear	High binding	25	100
29444-316	3697	Flat-bottom, half area, with lid	Clear	TC-treated	20	100
29444-312	3693	Flat-bottom, half area	White	Medium binding	25	100
29444-314	3694	Flat-bottom, half area	Black	Medium binding	25	100
33500-998	3883	Flat-bottom, half area	White/Clear	Medium binding	25	100
33500-994	3880	Flat-bottom, half area	Black/Clear	Medium binding	25	100
33500-996	3882	Flat-bottom, half area, with lid	Black/Clear	TC-treated	20	100
33501-002	3885	Flat-bottom, half area, with lid	White/Clear	TC-treated	20	100
29445-142	3641	Flat-bottom	Clear	Nonbinding	25	100
16001-310	3605	Round-bottom	White	Nonbinding	25	100
89091-016	3600	Flat-bottom	White	Nonbinding	25	100
29445-140	3650	Flat-bottom	Black	Nonbinding	25	100
33501-810	3990	Flat-bottom	White	Nonbinding	5	25
33501-812	3991	Flat-bottom	Black	Nonbinding	5	25
33501-808	3642	Flat-bottom	White	Nonbinding	25	100
77776-924	3686	Flat-bottom	Black	Nonbinding	25	100
33501-814	3992	Flat-bottom	White	Nonbinding	5	25
33501-816	3993	Flat-bottom	Black	Nonbinding	5	25

*Not available in Europe.

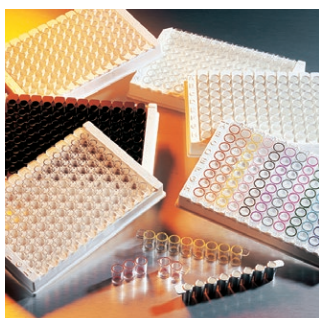
**Special low evaporation lid.

Corning® 96-well ELISA Microplates (Continued)

VWR Cat. No.	Corning Cat. No.	Type	Color	Surface	Qty/ Pk	Qty/ Cs
29444-099	3604	Flat-bottom	White/Clear	Nonbinding	25	100
29445-162	3651	Flat-bottom	Black/Clear	Nonbinding	25	100
33501-820	3995	Flat-bottom	White/Clear	Nonbinding	5	25
33501-006	3884	Flat-bottom, half area	White/Clear	Nonbinding	25	100
33501-818	3994	Flat-bottom, half area	White/Clear	Nonbinding	2	25
15705-066	351172	Flat-bottom, with lid	Clear	Not treated	1	50
15705-064	351177	Round-bottom, with lid	Clear	Not treated	1	50
62406-015	353910	Round-bottom	Clear	Not treated	1	50
12777-030	351190	Round-bottom	Clear	Not treated	25	100

Corning Stripwell™ 96-well ELISA Microplates and Accessories

VWR Cat. No.	Corning Cat. No.	Type	Color	Surface	Qty/ Pk	Qty/ Cs
29442-304	2593	Flat-bottom	Clear	Medium binding	25	100
29442-302	2592	Flat-bottom	Clear	High binding	25	100
29444-024	3913	Flat-bottom	White	Medium binding	25	100
29444-028	3923	Flat-bottom	White	High binding	25	100
29444-026	3914	Flat-bottom	Black	Medium binding	25	100
29444-030	3924	Flat-bottom	Black	High binding	25	100
46610-186	2481	Flat-bottom, low volume	Clear	High binding	25	100
46610-192	2484	Flat-bottom, low volume	White	Medium binding	25	100
46610-194	2485	Flat-bottom, low volume	White	High binding	25	100
46610-198	2482	Flat-bottom, low volume	Black	Medium binding	25	100
46610-190	2483	Flat-bottom, low volume	Black	High binding	25	100
10068-004	2580	Flat-bottom, strips only, no holder	Clear	High binding	200	800
29442-272	2506	Flat-bottom	Clear	Corning DNA-BIND®	1	50
29442-276	2508	Flat-bottom	Clear	Carbo-BIND	1	50
29442-280	2510	Flat-bottom	Clear	Sulfhydryl-BIND	1	50
29442-282	2572	Strip holder "Egg Crate"	N/A	N/A	1	50
29442-284	2578	96-well strip ejector	N/A	N/A	5	5



Low Volume Stripwell Microplates

- ▶ Total well volume: 190 µL
- ▶ Recommended working volume: 75 to 125 µL
- ▶ Same height/path length as a standard strip
- ▶ Standard 96-well center-to-center spacing



Corning 384-well ELISA Microplates

VWR Cat. No.	Corning Cat. No.	Type	Color	Surface	Qty/ Pk	Qty/ Cs
29445-115	3640	Flat-bottom	Clear	Nonbinding	25	100
77776-798	3680	Flat-bottom, with lid	Clear	Not treated	20	100
29444-096	3700	Flat-bottom	Clear	High binding	25	100
29444-094	3701	Flat-bottom, with lid	Clear	TC-treated	20	100
29444-092	3702	Flat-bottom	Clear	Not treated	25	100
89089-780	3702BC	Flat-bottom, with generic bar code	Clear	Not treated	25	100
89089-792	3572	Flat-bottom	White	Not treated	10	50
89089-788	3573	Flat-bottom	Black	Not treated	10	50
89089-796	3574	Flat-bottom	White	Nonbinding	10	50
89089-798	3574BC	Flat-bottom, with generic bar code	White	Nonbinding	10	50
89089-784	3575	Flat-bottom	Black	Nonbinding	10	50
89089-786	3575BC	Flat-bottom, with generic bar code	Black	Nonbinding	10	50
89089-856	3820	Flat-bottom	Black	Nonbinding	10	50
89089-858	3821	Flat-bottom	Black	Not treated	10	50
89203-192	3821BC	Flat-bottom, with generic bar code	Black	Not treated	10	50
89089-868	3824	Flat-bottom	White	Nonbinding	10	50
89203-194	3824BC	Flat-bottom, with generic bar code	White	Nonbinding	10	50
89089-854	3540	Flat-bottom, low volume	Black	Not treated	10	50
89089-862	3544	Flat-bottom, low volume	Black	Nonbinding	10	50

Corning® 384-well ELISA Microplates (Continued)

VWR Cat. No.	Corning Cat. No.	Type	Color	Surface	Qty/ Pk	Qty/ Cs
75805-276	3767	Flat-bottom, low flange	White/Clear	Nonbinding	25	100
89207-934	3766	Flat-bottom, low flange	Black/Clear	Nonbinding	25	100
75805-272	3763	Flat-bottom, low flange	White/Clear	Not treated	25	100
89207-930	3762	Flat-bottom, low flange	Black/Clear	Not treated	25	100
89207-932	3764	Flat-bottom, low flange, with lid	Black/Clear	TC-treated	20	100
10818-720	3764BC	Flat-bottom, low flange, with lid, with generic bar code	Black/Clear	TC-treated	20	100
89207-938	3770	Flat-bottom, low flange, with lid	Black/Clear	Corning CellBIND®	20	100
10818-722	3770BC	Flat-bottom, low flange, with lid, with generic bar code	Black/Clear	Corning CellBIND	20	100
89089-866	3542	Low volume, with lid	Black/Clear	TC-treated	10	50

Corning BioCoat™ 96-well ELISA Microplates



VWR Cat. No.	Corning Cat. No.	Type	Color	Surface	Qty/ Pk	Qty/ Cs
62405-611	354407	Flat-bottom	Clear	Collagen I	5	5
62405-419	356407	Flat-bottom	Clear	Collagen I	5	50
47748-278	356698	Flat-bottom	Clear	Collagen I	20	80
62405-640	354429	Flat-bottom	Clear	Collagen IV	1	50
62405-027	354461	Flat-bottom	Clear	Poly-D-Lysine	5	5
62406-032	356461	Flat-bottom	Clear	Poly-D-Lysine	5	50
47748-262	356690	Flat-bottom	Clear	Poly-D-Lysine	20	80
62405-670	354409	Flat-bottom	Clear	Fibronectin	1	5
BD354689	354689	Flat-bottom	Clear	Gelatin	1	5
BD356689	356689	Flat-bottom	Clear	Gelatin	1	50
62405-702	354410	Flat-bottom	Clear	Laminin	1	5
62405-432	354670	Flat-bottom	Clear	Laminin/Fibronectin	1	5
62405-113	354596	Flat-bottom	Clear	Laminin/Poly-D-Lysine	1	5
62405-438	354657	Flat-bottom	Clear	Laminin/Poly-L-Ornithine	1	5
62406-276	354516	Flat-bottom	Clear	Poly-L-Lysine	5	5
62406-274	356516	Flat-bottom	Clear	Poly-L-Lysine	5	50
62405-105	354607	Flat-bottom	Clear	Corning Matrigel® matrix	5	5
62406-288	354519	Flat-bottom	White	Collagen I	5	5
62406-286	356519	Flat-bottom	White	Collagen I	5	50
47748-280	356699	Flat-bottom	White	Collagen I	20	80
62406-284	354620	Flat-bottom	White	Poly-D-Lysine	5	5
62406-282	356620	Flat-bottom	White	Poly-D-Lysine	5	50
47748-264	356691	Flat-bottom	White	Poly-D-Lysine	20	80
62406-388	354650	Flat-bottom	White/Clear	Collagen I	5	5
62406-386	356650	Flat-bottom	White/Clear	Collagen I	5	50
47748-284	356701	Flat-bottom	White/Clear	Collagen I	20	80
62406-368	354651	Flat-bottom	White/Clear	Poly-D-Lysine	5	5
62406-366	356651	Flat-bottom	White/Clear	Poly-D-Lysine	5	50
62406-350	356663	Flat-bottom	White/Clear	Poly-D-Lysine	20	80
62406-290	354649	Flat-bottom	Black/Clear	Collagen I	5	5
62406-266	356649	Flat-bottom	Black/Clear	Collagen I	5	50
47748-282	356700	Flat-bottom	Black/Clear	Collagen I	20	80
62406-034	354640	Flat-bottom	Black/Clear	Poly-D-Lysine	5	5
62406-036	356640	Flat-bottom	Black/Clear	Poly-D-Lysine	5	50
47748-266	356692	Flat-bottom	Black/Clear	Poly-D-Lysine	20	80
95059-884	354717	Flat-bottom	Black/Clear	Corning PureCoat™ Amine	5	5
95059-904	356717	Flat-bottom	Black/Clear	Corning PureCoat Amine	5	50



Corning® BioCoat™ 384-well ELISA Microplates

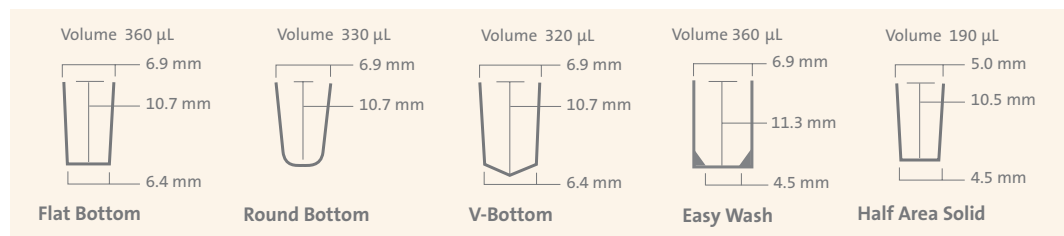
VWR Cat. No.	Corning Cat. No.	Type	Color	Surface	Qty/Pk	Qty/Cs
62406-380	354666	Flat-bottom	Clear	Collagen I	5	5
62406-378	356666	Flat-bottom	Clear	Collagen I	5	50
62406-356	354662	Flat-bottom	Clear	Poly-D-Lysine	5	5
62406-354	356662	Flat-bottom	Clear	Poly-D-Lysine	5	50
62406-377	354665	Flat-bottom	White	Collagen I	5	5
62406-374	356665	Flat-bottom	White	Collagen I	5	50
47748-288	356703	Flat-bottom	White	Collagen I	20	80
62406-361	354661	Flat-bottom	White	Poly-D-Lysine	5	5
62406-358	356661	Flat-bottom	White	Poly-D-Lysine	5	50
62406-372	354664	Flat-bottom	White/Clear	Collagen I	5	5
62406-370	356664	Flat-bottom	White/Clear	Collagen I	5	50
47748-286	356702	Flat-bottom	White/Clear	Collagen I	20	80
62406-365	354660	Flat-bottom	White/Clear	Poly-D-Lysine	5	5
62406-362	356660	Flat-bottom	White/Clear	Poly-D-Lysine	5	50
62406-384	354667	Flat-bottom	Black/Clear	Collagen I	5	5
62406-382	356667	Flat-bottom	Black/Clear	Collagen I	5	50
47748-292	356705	Flat-bottom	Black/Clear	Collagen I	20	80
62406-352	354663	Flat-bottom	Black/Clear	Poly-D-Lysine	5	5
62406-350	356663	Flat-bottom	Black/Clear	Poly-D-Lysine	5	50
47748-276	356697	Flat-bottom	Black/Clear	Poly-D-Lysine	20	80
95059-886	354719	Flat-bottom	Black/Clear	Corning PureCoat™ Amine	5	5
95059-906	356719	Flat-bottom	Black/Clear	Corning PureCoat Amine	5	50

Complementary Products

VWR Cat. No.	Corning Cat. No.	Description
89133-494	4082	Corning Lambda™ Plus 8-channel pipettor, 20 - 200 µL
89133-502	4086	Corning Lambda Plus 12-channel pipettor, 20 - 200 µL
29443-348	4803	Corning 1-200 µL universal fit stack rack pipet tips, natural, nonsterile
29442-690	4867	Corning 100-1000 µL universal fit racked pipet tips, blue, nonsterile
45000-448	21-040-CM	1L PBS (Phosphate Buffered Saline), 1x [-] calcium, magnesium
45000-446	21-040-CV	500 mL PBS (Phosphate Buffered Saline), 1x [-] calcium, magnesium
45001-042	25-055-CM	1L Water, cell culture grade, tested to USP Sterile Water for Injection specifications
45000-672	25-055-CV	500 mL Water, cell culture grade, tested to USP Sterile Water for Injection specifications
47734-658	AM-750UL-RD	Axygen® Axymats sealing mats for ELISA microplates, nonsterile
47749-926	BF-400-S	Axygen breathable sealing film for tissue culture, sterile
10011-117	PCR-SP	Axygen AxySeal 80 µm sealing film for short-term storage, nonsterile
47734-817	PCR-AS-200	Axygen PCR 35 µm aluminum sealing film, nonsterile
47743-958	RES-SW-96-HP	Axygen single well reagent reservoir, high profile, nonsterile
89179-656	RES-MW4-HP	Axygen multiple well reagent reservoir with 4-channel trough, high profile, nonsterile
53504-035	4870	Costar® 50 mL reagent reservoirs, sterile
29442-476	4872	Costar 100 mL reagent reservoirs, sterile

For more information on these products, visit vwr.com/corning.

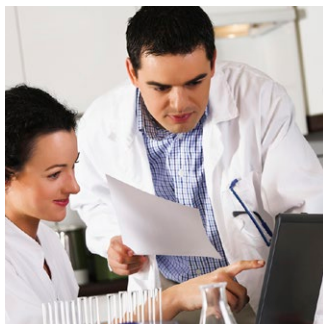
96-well Geometry and Dimensions



384-well Geometry and Dimensions



Quality, Support, and Service Every Step of the Way



Quality You Can Count On

By choosing Corning Life Sciences as your critical component supplier, you can rely on:

Rigorous Standards

We continuously invest in our quality processes. Our products are manufactured from USP Class VI materials under the current ISO 9001 standard and FDA Quality System Regulation 21 CFR 820, current good manufacturing practices (cGMP), FDA registered facility for Class 1 Medical Devices.

Certification Program

Corning's Certification Program helps you meet your critical component requirements. Detailed product descriptions, drawings, and lot-specific certificates of quality are available to help you satisfy regulatory requirements — and ensure that critical components are manufactured to your requirements each and every time.

Service and Support

Dedicated Customer Service

Our personalized customer service is the key to a successful long-term relationship. Through one-on-one support, our knowledgeable customer service representatives will answer your questions quickly and help find solutions.

Product Customization

Our products can be custom made to your test kit requirements. We can customize surface chemistries, color coding, bar coding, packaging, and certification to meet your needs.

Worldwide Sales and Distribution

We have invested in an extensive worldwide sales and distribution network to provide fast, customized, local service in all of the markets we serve. We have local sales and logistics facilities throughout Europe as well as Asia to meet the needs of today's global customers.

Lot Allocation Program

For our 1 x 8 Corning® Stripwell™ plates, we can allocate specific lots and lot sizes to meet your needs. This allows you to optimize raw material lots to match production runs, saving valuable time and money. You'll appreciate the improved product traceability that comes with specific lot control.

Scientific Support

In addition, five ELISA Application Notes are available at www.corning.com/lifesciences.

- ▶ Immobilization Principles – Selecting the Surface for ELISA Assays (CLS-DD-AN-454)
- ▶ Optimizing the Immobilization of Protein and Other Biomolecules for ELISA Assays (CLS-DD-AN-455)
- ▶ Effective Blocking Procedures in ELISA Assays (CLS-DD-AN-456)
- ▶ Optimizing the Separation Step on 96-well Microplates for ELISA Assays (CLS-DD-AN-457)
- ▶ Selecting the Detection System - Colorimetric, Fluorescent, Luminescent Methods for ELISA Assays (CLS-DD-AN-458)

Warranty/Disclaimer: Unless otherwise specified, all products are for research use only. Not intended for use in diagnostic or therapeutic procedures. Not for use in humans. Corning Life Sciences makes no claims regarding the performance of these products for clinical or diagnostic applications.

CORNING

For additional product or technical information, visit vwr.com/corning, call 1.800.932.5000, or contact your VWR representative.



800 932 5000 | VWR.COM

Prices and product details are current when published and subject to change without notice. | Certain products may be limited by federal, state, provincial, or local regulations. | VWR, part of Avantor, makes no claims or warranties concerning sustainable/green products. Any claims concerning sustainable/green products are the sole claims of the manufacturer and not those of VWR International, LLC and/or Avantor, Inc. or affiliates. All prices are in US dollars unless otherwise noted. Offers valid in US and Canada, void where prohibited by law or company policy, while supplies last. | Trademarks are owned by Avantor, Inc. or its affiliates, unless otherwise noted. | Visit vwr.com to view our privacy policy, trademark owners, and additional disclaimers. © 2019 Avantor, Inc. All rights reserved.