

AVANTI J-15 SERIES

THE RELIABILITY AND PERFORMANCE YOU TRUST



ULTRAHarmonic
Technology



BRILLIANCE
at every turn.



FROM GENERAL CELL CULTURE PREPARATIONS TO PURIFIED END PRODUCT APPLICATIONS

THE AVANTI J-15 SERIES IS PART OF A NEW FAMILY OF LIFE SCIENCE EQUIPMENT THAT PROVIDES THE EXCEPTIONAL PERFORMANCE YOU EXPECT FROM BECKMAN COULTER.

The Avanti J-15 is an all around solution for everyday scientific needs.

Tissue Culture

Routine cell culture procedures are made easy and safe with the use of aerosolve canister. The BioCertified* enhancement is made of a clear shell to allow sample visibility even before the canister is opened.



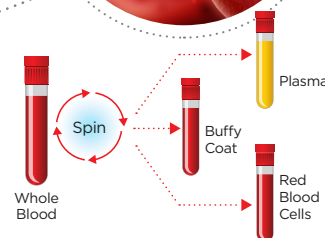
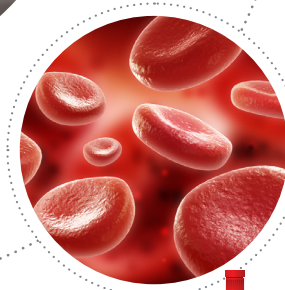
Nucleic Acid Purification

Achieve high quality plasmid DNA purification using low speed centrifugation and swinging bucket



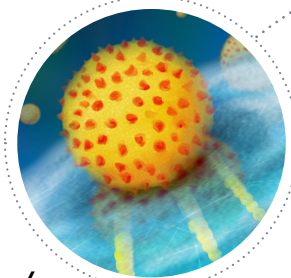
Blood Component Separation

Optimize blood sample separations with new technology that avoids sample interface disturbances or grow cells in a plate format



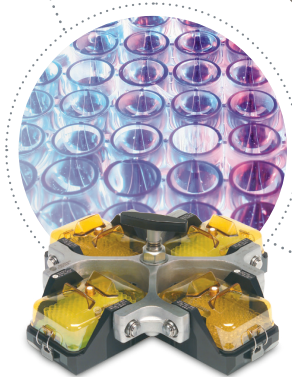
Transfection/ Transduction

Centrifugal boosts, or spinfection, increases transduction and transfection rate up to 10 fold[§]



Assay Setup

The microplate carriers add the versatility to perform assays or grow cells in a plate format



[§] Berggren, W. Travis, Margaret Lutz, and Veronica Modesto. General spinfection protocol. StemBook (2012).

[¥] Fuss, Ivan J., et al. Isolation of whole mononuclear cells from peripheral blood and cord blood. John Wiley & Sons, Inc., 2009.

* BioCertified has been tested and validated to demonstrate containment of microbial aerosols by an independent third party facility (Health Protection Agency, Porton Down, UK or USAMRIID, Ft. Detrick, MD, USA).

ENHANCED CONTROL OF SAMPLE, TIME AND WORKFLOW

ULTRA Harmonic Technology

The Ultra Harmonic Technology optimizes sample separation by reducing the net changes of forces to the sample, maximizing the amount of specimen presence in the pellet, and reducing the presence of contaminants or unpelleted materials in the supernatant.

It also optimizes time by implementing faster acceleration and deceleration profiles without compromising on sample quality.

Speed Efficiency and Minimum Sample Disturbances with Ultra Harmonic Technology

Intelligent acceleration and deceleration profiles

Durable and Easy-to-Clean, Innovative Design

A hallmark of Beckman Coulter's life science equipment

Fast and Accurate Imbalance Detection

Early diagnostic eliminates false positives with hardware and software improvements

Efficiency

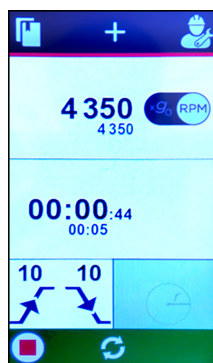
Easy one-touch access to 6 programs and store up to 99 programs

Optimize Bench Space

With our truly ventilated unit while processing protocols in blood separation or microbiology

Ease of Use and Faster Accessibility

Icon usability and intuitive display on high contrast color LCD screen



MULTI-DIMENSIONAL DIFFERENTIATION & FEATURES



Early Imbalance Detection Within 30 seconds

Increases confidence on experimental runs

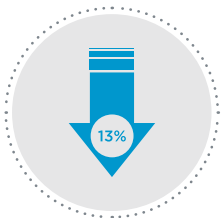
We've optimized our sensitivity to detect rotor imbalance as close to the beginning of the run as possible. That means the user can set the experiment and walk away with confidence. This saves time and protects the sample.



True Imbalance Detection

Reduces false diagnostics

Our improved hardware and software accurately respond to true imbalance without triggering nuisance imbalance diagnostics. This feature reduces the hassle and downtime during the workflow. System allows up to 12 gram imbalance tolerance*



Lower Lift Over Height

Easy rotor swapping

Designed with the end-user in mind, the J-15 has a 13% lower lift over height when compared to the Allegra X-series centrifuges. This allows for easier rotor swapping for all user types.

ROTORS AVAILABLE

Swinging Bucket



JS-4.750

- Max RPM: 4,739 RPM
- Max RCF: 5,250 x *g*
- 3 liter Maximum Capacity
- BioSafe options
- Sample containers supported
 - Flasks
 - Tube range: 3 - 50mL
 - Bottles: 230 conical, 250, 500, 750mL
 - Aerosolve Canisters



JS-4.750 μ

- Max RPM: 4,450 RPM
- Max RCF: 4,060 x *g*
- BioSafe options
- Plate Capacity
 - 16 single plates
 - 4 deep well

Fixed Angle



JA-10.100

- Max RPM: 10,200 RPM
- Max RCF: 11,420 x *g*
- 600mL Maximum Capacity
- BioSafe Certification
- Sample containers supported
 - 1.5, 10, 15, 50, 100mL tubes

VWR Cat. No.	Item Description
76102-916	Rotor Assembly, JS-4.750
76102-914	Rotor Assembly, JA-10.100
76102-918	Rotor Assembly, JS-4.750 Microplate Carriers

* Using the JS-4.750 rotor

INSTRUMENT AND ROTOR PACKAGES

Swinging Bucket

Avanti J-15 series swinging bucket packages

Includes benchtop centrifuge and JS-4.750 (4 x 750 mL) swinging bucket rotor.

Bottles are NOT included and can be ordered separately

VWR Cat. No.	Description
BKC19399	Avanti J-15, IVD, Ventilated, 100-120 V, 50/60 Hz, Swinging Bucket Package
BKC19398	Avanti J-15R, IVD, Refrigerated, 120 V, 60 Hz, Swinging Bucket Package
BKC19400	Avanti J-15, Ventilated, 100-120 V, 50/60 Hz, Swinging Bucket Package
BKC19397	Avanti J-15R, Refrigerated, 120 V, 60 Hz, Swinging Bucket Package



- 4,750 RPM/5,250 x g RCF (J-15R 200-230V)
- 4,550RPM/4,820 x g RCF (J-15/R 120V)

Avanti J-15 series microplate packages

Includes benchtop centrifuge and JS-4.750 μ microplate rotor (yoke with microplate carriers), 4 microplate carriers

Microplates and microplate covers are NOT included and can be ordered separately.

VWR Cat. No.	Description
BKC19405	Avanti J-15, IVD, Ventilated, 100-120 V, 50/60 Hz, Microplate Package
BKC19404	Avanti J-15R, IVD, Refrigerated, 120 V, 60 Hz, Microplate Package
BKC19406	Avanti J-15, Ventilated, 100-120 V, 50/60 Hz, Microplate Package
BKC19403	Avanti J-15R, Refrigerated, 120 V, 60 Hz, Microplate Package



- 4,450RPM/4,060 x g RCF (J-15R)
- 4,350RPM/3,880 x g RCF (J-15)

Avanti J-15 series cell culture packages

Includes benchtop centrifuge and JS-4.750 (4 x 750 mL) swinging bucket rotor, 15 mL conical tube adapters (qty 4) and 50 mL conical tube adapters (qty 4).

Bucket covers and tubes/bottles are NOT included and can be ordered separately.

VWR Cat. No.	Description
BKC19417	Avanti J-15, IVD, Ventilated, 100-120 V, 50/60 Hz, Cell Culture Package
BKC19416	Avanti J-15R, IVD, Refrigerated, 120 V, 60 Hz, Cell Culture Package
BKC19418	Avanti J-15, Ventilated, 100-120 V, 50/60 Hz, Cell Culture Package
BKC19415	Avanti J-15R, Refrigerated, 120 V, 60 Hz, Cell Culture Package



- 4,750 RPM/5,250 x g RCF (J-15R 200-230V)
- 4,550 RPM/4,820 x g RCF (J-15/R 120V)
- **Adapters:**
 - Holds 56 of 15 mL tubes
 - Holds 28 of 50 mL Tubes

INSTRUMENT AND ROTOR PACKAGES

Swinging Bucket

Avanti J-15 series biosafe packages

Includes benchtop centrifuge and BioCertified* JS-4.750 (4 x 750 mL) swinging bucket rotor, BioCertified* aerosolve canisters (qty 4), 15 mL conical BioSafe aerosolve canister tube racks (qty 4) and 50 mL conical BioSafe aerosolve canister tube racks (qty 4). (Rotor is BioCertified* when used with aerosolve canisters.)

Tubes/bottles are NOT included and can be ordered separately.

VWR Cat. No.	Description
BKC19411	Avanti J-15, IVD, Ventilated, 100-120 V, 50/60 Hz, BioSafe Package
BKC19410	Avanti J-15R, IVD, Refrigerated, 120 V, 60 Hz, BioSafe Package
BKC19412	Avanti J-15, Ventilated, 100-120 V, 50/60 Hz, BioSafe Package
BKC19409	Avanti J-15R, Refrigerated, 120 V, 60 Hz, BioSafe Package



- 4,750 RPM/5,250 x g RCF (J-15R 200-230V)
- 4,550 RPM/4820 x g RCF (J-15/R 120V)

Avanti J-15 series blood sample packages

Includes benchtop centrifuge and JS-4.750 (4 x 750 mL) swinging bucket rotor, 13 mm diameter tube adapters (qty 4) and 16 mm diameter tube adapters (qty 4).

Bucket covers and tubes/bottles are NOT included and can be ordered separately.

VWR Cat. No.	Description
BKC19423	Avanti J-15, IVD, Ventilated, 100-120 V, 50/60 Hz, Blood Sample Package
BKC19422	Avanti J-15R, IVD, Refrigerated, 120 V, 60 Hz, Blood Sample Package
BKC19424	Avanti J-15, Ventilated, 100-120 V, 50/60 Hz, Blood Sample Package
BKC19421	Avanti J-15R, Refrigerated, 120 V, 60 Hz, Blood Sample Package



- 120 - 13mm Blood Tubes
- 76 - 16mm Blood Tubes

Fixed Angle

Avanti J-15 series Fixed Angle packages

Includes benchtop centrifuge and BioCertified* JA-10.100 (6 x 100 mL) fixed angle rotor.

Adapters, tubes/bottles are NOT included and can be ordered separately.

VWR Cat. No.	Description
BKC19393	Avanti J-15, IVD, Ventilated, 100-120 V, 50/60 Hz, Fixed Angle Package
BKC19392	Avanti J-15R, IVD, Refrigerated, 120 V, 60 Hz, Fixed Angle Package
BKC19394	Avanti J-15, Ventilated, 100-120 V, 50/60 Hz, Fixed Angle Package
BKC19391	Avanti J-15R, Refrigerated, 120 V, 60 Hz, Fixed Angle Package



- 600 mL Maximum Capacity
- 10,200 RPM 11,420 x g RCF
- Biosafety Lid

ROTOR ACCESSORIES

Swinging Bucket

Table 1: Additional Biosafety accessories for personal protection and sample protection

VWR Cat. No.	Description
BK392805	JS-4.750 Tube-Bottle Bucket Covers (Set of 2)
BK393070	JS-4.750 Multi-well Plate Carrier Cover (Set of 2)
BK392806	JS-4.750 Multi-well plate carrier (set of 2)
BK359481	JS-4.750 Aerosolve Canister (Set of 2)

Table 2: Modular Disk Adapters (polypropylene).

Color Code	Nom. Tube Vol. (mL)	Nom. Tube Dia. (mm)	Max. No. of Tubes per Adapter	Max. No. Tubes in Rotor	Adapter VWR Cat. No.	
					Set of 2	Set of 4
blue	3 5	10 12	37	148	BK359469	BK359148
tan	3 & 5	13	30	120	BK359478	BK359157
orange	7 & 10	14	24	96	BK359470	BK359149
purple	12	16	19	76	BK359471	BK359150
green conical	15	18	14	56	BK359472	BK359151
green	15 & 20	18	14	56	BK359473	BK359152
lt. green conical	30 & 50	30	4	16	BK359475	BK359154
yellow	50	29	7	28	BK359474	BK359153
dk. blue	50	35	4	16	BK359476	BK359155



Table 3: Cell Culture Flask Adapters (EPDM)

Color Code	Flask Size (cm ²)	No. Flasks per Adapter	VWR Cat. No. (Qty 2)
orange	75	1	BK369292
green	25	2	BK369295



Fixed Angle

Table 4: Bottle and Tube Adapters for the JA-10.100 Rotor^a

Adapter VWR Cat. No. (Set of 6)	Tube or Bottle Type ^b	Tube Dimensions (mm)	Nominal Tube Volume (mL)
BK392830	round-bottom tube or bottle	29 x 108	50
BK392268	conical tube	30 x 115	50
BK392823	bottle	18 x 107	15
BK392270	conical tube	17 x 120	15
BK392824	round-bottom bottle	16 x 82	10
BK344497	microfuge tube	11 x 39	1.5

a. Unless otherwise indicated, adapters are polypropylene

b. Observe manufacturer's recommendations for RCF and temperature limitations.

c. BK344497 fits in BK392830.

COMPLIANCE AND TECHNICAL SUPPORT

- At Beckman Coulter, engineering, sales, support, training and service work together to offer comprehensive and extensive customer focused products.
- Expert service engineering team strives for “Fix It Right the First Time.”
- Certifications of Compliance.



Specification

	VWR Cat. No.	Centrifuge Version
IVD	76332-090	AVANTI J-15R, 208-230 VAC, 60Hz
	76102-924	AVANTI J-15R, 120 VAC, 60Hz
	76102-920	AVANTI J-15, 100-120 VAC, 50/60Hz
Non-IVD	76332-088	AVANTI J-15R, 208-230 VAC, 60Hz
	76102-904	AVANTI J-15R, 120 VAC, 60Hz
	76102-922	AVANTI J-15, 100-120 VAC, 50/60Hz

Specification	Description	Avanti J-15	Avanti J-15R
Speed	Set Speed	200 to 10,200 RPM in 10 RPM increments	200 to 10,200 RPM in 10 RPM increments
	Set RCF	10 to 11,420 x g in 10 x g increments	10 to 11,420 x g in 10 x g increments
	Speed Display	Actual rotor speed in 10 RPM increments or actual RCF in 10 x g increments	
	Speed Accuracy	±25 RPM of Set Speed from 200 to 10,200 RPM	
Time	Set Time	1 minute to 99 hours and 59 minutes or continuous (Hold)	
	Time Display	Timed run: indicates run time remaining (HH:MM:SS) Hold run: indicates elapsed time (HH:MM:SS) Pulse run: indicates elapsed time (HH:MM:SS)	
	Temperature		
Temperature	Set Temperature ¹	N/A	-10 to +40° C in 1° C increments
	Temperature Display		Chamber temperature in 1° C increments
	Temperature Accuracy		±2° C of Chamber temperature (after equilibration); applies to 4 to 25C temp range
	Over Temperature Shutdown ²		> 55° C
Acceleration	Acceleration Profiles	10 acceleration rates, including maximum torque	
Deceleration	Deceleration Profiles	11 deceleration rates, including maximum torque and no braking	
Dimensions	Width	55.6 cm (21.9 in)	75.6 cm (29.8 in)
	Depth	74.9 cm (29.5 in)	70.3 cm (27.7 in)
	Height	36.8 cm (14.5 in)	36.8 cm (14.5 in)
Weight	Weight, not including rotor	93 kg (205 lbs)	120 kg (265 lbs)
Ventilation Clearances	Sides	30 cm (12.0 in)	7.6 cm (3.0 in)
	Rear	30 cm (12.0 in)	7.6 cm (3.0 in)
Finishes	Top Surface	Painted steel	
	Front Surface	Uncoated plastic	
	Door	Painted aluminum and plastic	
Electrical	Electrical Requirements	100V, 12A, 50/60Hz 120V, 10A, 50/60Hz	120V, 12A, 60Hz
		200-230V, 6A, 50/60Hz	200-230V, 8A, 50Hz 208-230V, 9A, 60Hz
	Electrical Supply	Class 1	
	Installation (overvoltage) Category	II	
Environmental	Noise output (1 m in front of instrument, 1.5 m above the floor with JA-10.100 rotor at 10,200 RPM)	61 dBA	58 dBA
	Ambient Temperature Range	10 to 31° C	10 to 35° C
	Humidity	80%, noncondensing	80%, noncondensing
	Refrigerant	N/A	R404A
	Maximum Heat Dissipation under steady state conditions	4095 Btu/h (1.2 kW)	120V: 4913 Btu/h (1.44 kW) 200-230V: 6551 Btu/h (1.92 kW)
	Pollution Degree ³	2	
Technology	Altitude	Up to 2,000 meters	
	Ultra Harmonic Technology	✓	✓

800 932 5000 | VWR.COM

Prices, product, and/or services details are current when published and subject to change without notice. | Certain products or services may be limited by federal, state, provincial, or local regulations. | VWR, part of Avantor, makes no claims or warranties concerning sustainable/green products. Any claims concerning sustainable/green products are the sole claims of the manufacturer and not those of VWR International, LLC and/or Avantor, Inc. or affiliates. All prices are in US dollars unless otherwise noted. Offers valid in US and Canada, void where prohibited by law or company policy, while supplies last. | Trademarks are owned by Avantor, Inc. or its affiliates, unless otherwise noted. | Visit vwr.com to view our privacy policy, trademark owners, and additional disclaimers. © 2020 Avantor, Inc. All rights reserved.

IVD: In Vitro Diagnostics

0320 Lit. No. 020093WREV2

¹ To reach temperatures above ambient, the centrifuge is dependent on the frictional heat generated inside the chamber during operation. At low run speeds or low ambient temperatures, the centrifuge may not be able to achieve some higher temperatures.

² If the system reaches this temperature, it will issue a diagnostic and shut down using max brake.

³ Normally, only nonconductive pollution occurs. Occasionally, however, a temporary conductivity caused by condensation must be expected.

© 2020 Beckman Coulter, Inc. All rights reserved. Beckman Coulter, the stylized logo, and the Beckman Coulter product and service marks mentioned herein are trademarks or registered trademarks of Beckman Coulter, Inc. in the United States and other countries.

CENT-6510SB02.20

