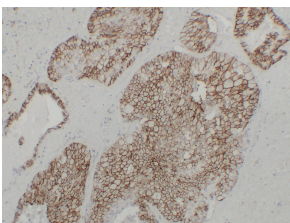


## Anti-Cadherin 16 Antibody [ABT-CDH16] (A97811)

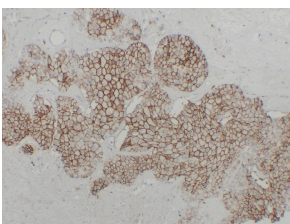
### Specifications:

Name:	Anti-Cadherin 16 Antibody [ABT-CDH16]
Description:	Mouse monoclonal (ABT-CDH16) antibody to Cadherin 16.
Applications:	IHC
Reactivity:	Human
Immunogen:	Synthetic peptide derived from human KSP-Cadherin.
Host:	Mouse
Clonality:	Monoclonal
Clone ID:	ABT-CDH16
Isotype:	IgG
Conjugate:	Unconjugated
Purification:	Immunogen affinity purified.
Product Form:	Liquid
Formulation:	Supplied in Tris Buffered Saline with 0.5% Bovine Serum Albumin and 0.1% Kathon CG/ICP.
Disclaimer:	This product is for research use only. It is not intended for diagnostic or therapeutic use.

### Images:



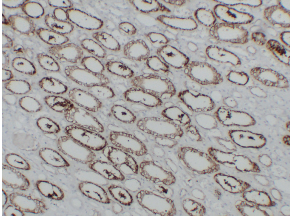
Immunohistochemical analysis of paraffin-embedded human Chromophobe cell renal carcinoma using Anti-Cadherin 16 Antibody.



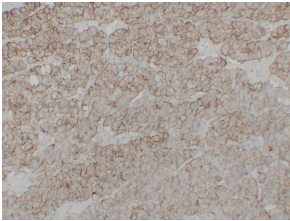
Immunohistochemical analysis of paraffin-embedded human Chromophobe cell renal carcinoma using Anti-Cadherin 16 Antibody.

## Anti-Cadherin 16 Antibody [ABT-CDH16] (A97811)

Images continued:



Immunohistochemical analysis of paraffin-embedded human Renal clear cell carcinoma using Anti-Cadherin 16 Antibody.



Immunohistochemical analysis of paraffin-embedded human Renal oncocytoma using Anti-Cadherin 16 Antibody.