



Simple and Effective System for Colony Counting



*Finally,
You Have
a Choice!*



Online Ordering Available



Compact Dry™ is a ready-to-use system reducing the time needed to perform microbial testing on food, beverage, meat, cosmetics, and raw materials. Place 1ml of sample onto the plate and incubate. Colonies grow and develop specific colors from chromogenic substrates. This provides for easy organism differentiation and counting.

Significant advantages over the competition.



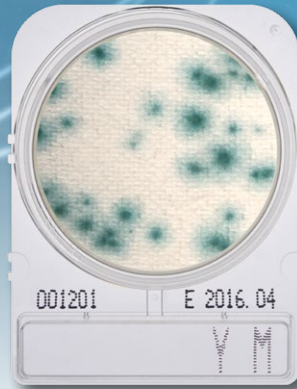
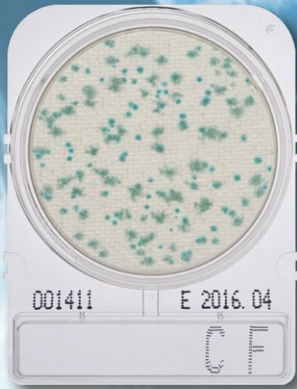
Compact Dry™ TC (Total Count)

Compact Dry™ TC is a medium for total viable bacterial count. Growing colonies appear red due to redox indicator tetrazolium salt. Compact Dry™ TC is AOAC, MicroVal and NordVal approved.
100/pk.....CA10145-968



Compact Dry™ EC (E. coli and Coliforms)

Compact Dry™ EC contains two kinds of chromogenic enzyme substrates: Magenta-Gal and X-Gluc. *E. coli* forms blue colonies, Coliforms turn red. The total coliform group count is the sum of both the red and blue colonies.
100/pk.....CA10145-954



Compact Dry™ CF (Coliforms)

Compact Dry™ CF is an easy tool for the detection of coliforms. Coliforms grow with blue/blue green colonies as the recipe contains the chromogenic enzyme substrate X-GAL. The growth of bacteria other than coliforms is mainly inhibited but in case of growth they form colorless colonies.

100/pk.....CA10145-952

Compact Dry™ YM (Yeast and Mold)

With Compact Dry™ YM, yeasts and mold can be differentiated by color. The medium contains the chromogenic enzyme substrate X-Phos which turns blue with many yeasts. Molds form fluffy colonies with a characteristic color.

100/pk.....CA10145-972

Compact Dry™ XSA (*Staphylococcus aureus*)

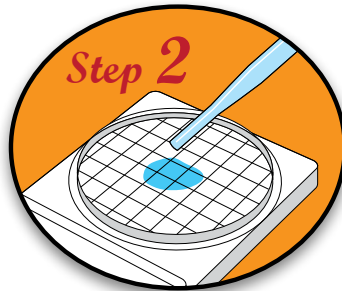
Compact Dry™ XSA determines *Staphylococcus aureus* by means of selective growth of *Staphylococcus* and differentiation by egg yolk reaction. *S. aureus* generates blue pigments which result in blue/blue green colonies.

100/pk.....CA10145-970

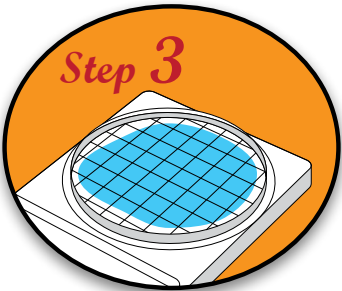
How to use:



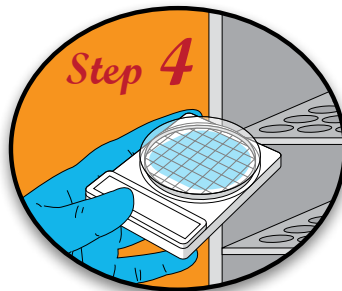
Remove protective cap from Compact Dry™ plate.



Drop 1ml of specimen (dilute if necessary) in the middle of dry sheet.



Specimen diffuses automatically into the plate, transforming the dry medium to gel.



Attach the cap, and incubate for prescribed time. Count the number of colonies on a light box.



Features and Benefits:

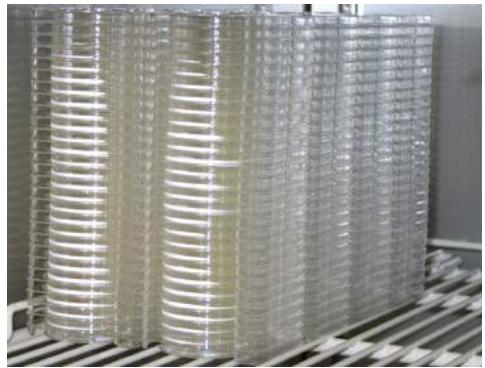
- Room temperature storage
- 18 month shelf life from date of manufacture
- Self diffusing media
- Stackable
- Write-on area
- Easy to Handle and Pick up
- Simple to pick colonies for subculturing
- Easy read-out of results



• Easy-to-handle. Rigid plastic frame with easy opening lid



• Stackable and space saving



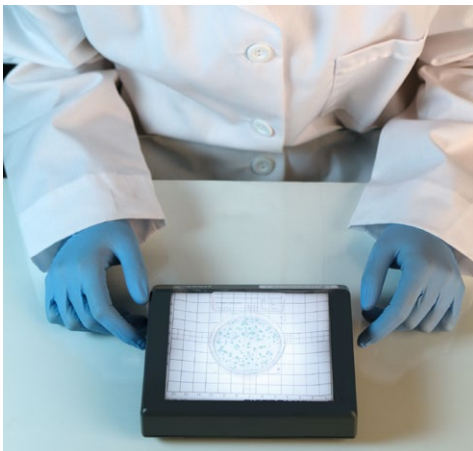
• Sample diffuses automatically and evenly. No need for spreader!

Compact Dry™ Products	Incubation Temp	Incubation Time
CF	35 °C	18-24 hr
EC	35 °C	20-24 hr
XSA	35 °C	24 hr
TC	35 °C	44-48 hr
YM	25 °C	3-7 days

• Inoculation Temperature and Time



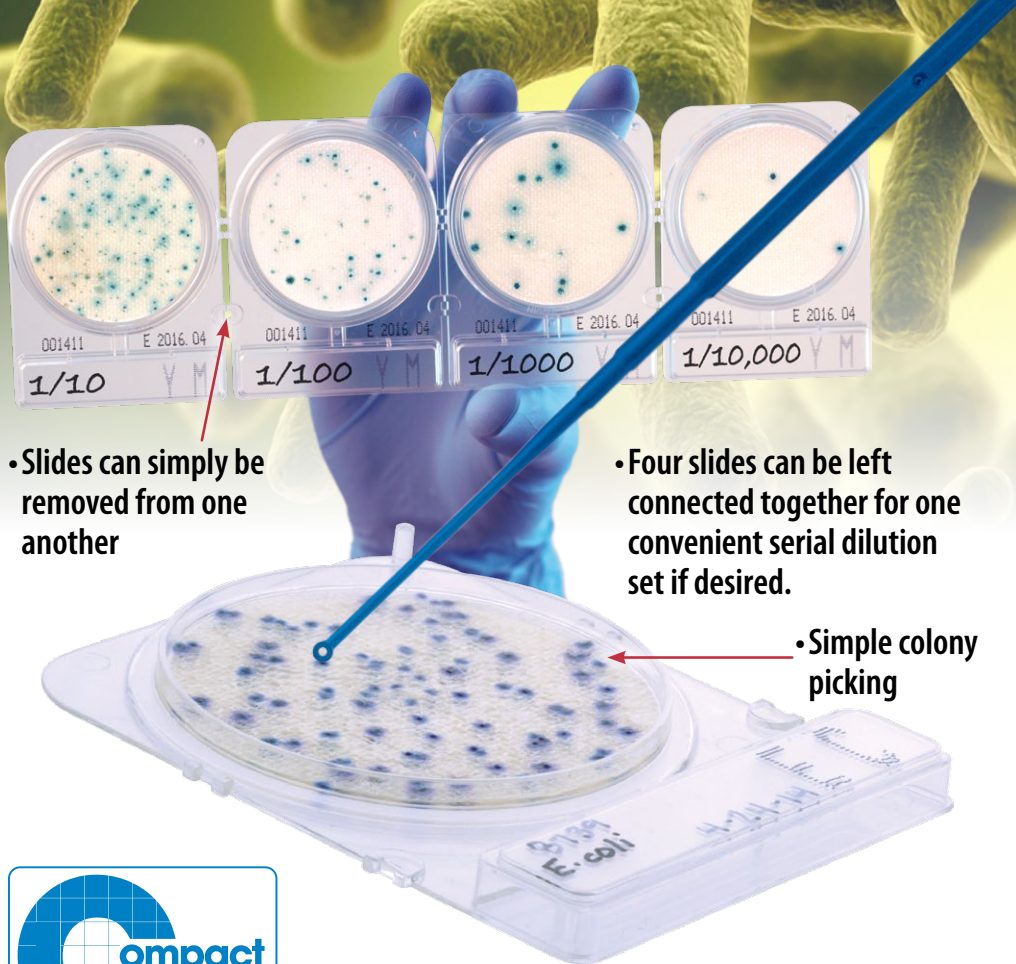
• Four plates per mylar sleeve



• Rapid results that are clearly readable



• Convenient write-on area



• Slides can simply be removed from one another

• Four slides can be left connected together for one convenient serial dilution set if desired.

• Simple colony picking



is manufactured for Hardy Diagnostics by  **NISSUI PHARMACEUTICAL CO., LTD**

AOAC Approved*	MicroVal Approved*	NordVal Approved*
TC, EC, CF, YM, X-SA	TC, EC, CF, XSA	TC, EC, CF, X-SA, XBC

*Call for more specific details



MICROVAL 



Sample Preparation

Environmental Testing



Pre-moistened Ready-to-use

Collect and transport your environmental sample with efficiency and ease. A ready-to-use swab and tube pre-filled with your choice of solutions to fit your specific needs! The entire unit is terminally sterilized. Simply remove the cap, which is attached to the dacron swab. Collect your sample by swabbing the surface, recap, and send to the lab. Inoculate your Compact Dry™ plate by adding one ml of buffer to the slide. Each EnviroTrans™ tube contains broth or buffer (see listing). Excellent for detection or enumeration of microorganisms from environmental surfaces or equipment.

EnviroTrans™ Neutralizing Buffer

2ml, 20/box CA89407-764
5ml, 20/box CA89407-766

EnviroTrans™ Lethen Broth

5ml, 20/box CA89407-672

EnviroTrans™ Neutralizing Saline

5ml, 20/box CA89407-512

Prefilled Ready-to-use

Dilu-Lok™ Dilution Vials Prefilled Dilution Vials

Our pre-filled dilution vial is designed especially for the food, dairy, and water industries. Vials are filled to 90ml or 99ml with a variety of buffering solutions. Each lot is meticulously tested for pH, sterility, and fill volume. Designed and packaged to eliminate leaking.

Butterfield's Phosphate Buffer

90ml fill, 50/pk CA89407-110
99ml fill, 50/pk CA89407-112

Phosphate Buffer with MgCl

90ml fill, 50/pk CA89407-114
99ml fill, 50/pk CA89407-116

Buffered Peptone Water

90ml fill, with 1% Tween® 20, 50/pk CA89407-098
90ml fill, 50/pk CA89407-096



Write-on area

One handed operation

Clarified Polypropylene so you can see your sample





1.800.932.5000
vwr.com



Prices and product details are current when published; subject to change without notice. | Certain products may be limited by federal, state, provincial, or local regulations. | VWR makes no claims or warranties concerning sustainable/green products. Any claims concerning sustainable/green products are the sole claims of the manufacturer and not those of VWR International, LLC. All prices are in Canadian dollars unless otherwise noted. Offers valid in Canada, void where prohibited by law or company policy, while supplies last. | VWR, the VWR logo and variations on the foregoing are registered (®) or unregistered trademarks and service marks, of VWR International, LLC and its related companies. All other marks referenced are registered by their respective owner(s). | Visit vwr.com to view our privacy policy, trademark owners and additional disclaimers. ©2015 VWR International, LLC. All rights reserved.