

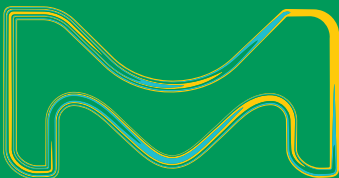
VWRTM
part of avantor

order on
VWR.COM

**MILLIPORE
SIGMA**

we support you

**Individual Products and Tailor-made
Chemicals for your Industrial Applications
at any Stage of your Process**



The life science business of Merck KGaA,
Darmstadt, Germany operates as
MilliporeSigma in the U.S. and Canada.

WHO WE ARE ...

With a large catalog of products, MilliporeSigma's Life Science business delivers many of the most highly-respected brands in the industry. Our offering covers every step of the production chain, creating a complete end-to-end workflow. Our innovative portfolio and industry leading capabilities uniquely positions us to anticipate and deliver your needs.

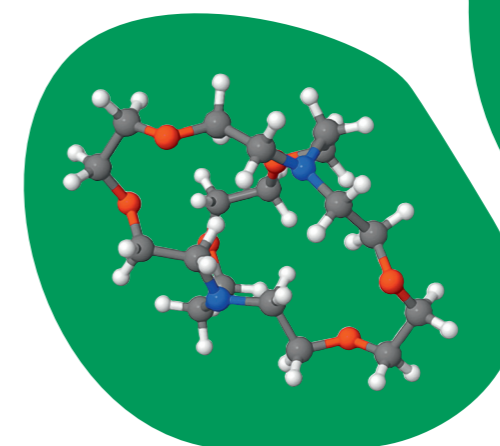
... AND HOW CAN WE SUPPORT YOU?

Optimizing the cost of your supply chain cannot be achieved by optimizing raw material cost alone. We can help you to reduce your overall expenses by helping you choose products that are not only convenient but closely geared toward your particular process or applications.

PRODUCTION AND R&D

Customized Products for Organic Synthesis

MilliporeSigma provides an extensive portfolio of over 10,000 organic synthesis products that range from building blocks, reagents and solvents to catalysts and special inorganic compounds.



Product Examples for Organic Synthesis

VWR Cat. No.

Tween® 80 (Polysorbate) suitable for use as excipient EMPROVE® exp Ph Eur, JP, NF	EM8.17061.2500
Tetrahydrofurfuryl Alcohol Polyethylene Glycol ether for synthesis	EM8.21092.0250
Diisopropylamine for synthesis	EM8.03646.1000
N-(3-Dimethylaminopropyl)-N'-ethylcarbodiimide hydrochloride for synthesis	EM8.00907.0025
Sodium Formaldehydesulfoxylate Hydrate	EM8.06455.9025

Reduce costs and waste:

- Save time and effort
- Minimize health risks
- Simplify scale-up
- Ensure that your exact requirements are met

PRODUCTION

EMSURE® products in bigger pack sizes

EMSURE® solvents, acids, caustic alkalis and bases feature low trace impurities and low evaporation residue - making them perfectly suitable for the highly demanding industrial applications.

Your benefits with EMSURE® products:

- Extremely good impurity profile
- Worldwide availability
- Comprehensive documentation
- Convenient and safe packaging
- Corresponding withdrawal systems



Product	Content	Packaging	VWR Cat. No.
Solvents EMSURE®			
Acetone for analysis EMSURE® ACS, ISO, Reag. Ph Eur	10 L	Stainless steel drum	EM1.00014.6010
	180 L	Plastic receptacle with outer steel drum	EM1.00014.9180
	190 L	Stainless steel drum	EM1.00014.6190
Chloroform for analysis EMSURE® ACS, ISO, Reag. Ph Eur	10 L	Stainless steel drum	EM1.02445.6010
	25 L	Stainless steel drum	EM1.02445.6025
	190 L	Stainless steel drum	EM1.02445.9190
Dichloromethane for analysis EMSURE® ACS, ISO, Reag. Ph Eur	10 L	Stainless steel drum	EM1.06050.6010
	25 L	Metal drum	EM1.06050.6025
	190 L	Stainless steel drum	EM1.06050.9190
Ethanol absolute for analysis EMSURE® ACS, ISO, Reag. Ph Eur	10 L	Stainless steel drum	EM1.00983.6010
	25 L	Stainless steel drum	EM1.00983.6025
	180 L	Plastic receptacle with outer steel drum	EM1.00983.9180
n-Heptane for analysis EMSURE® Reag. Ph Eur	10 L	Stainless steel drum	EM1.04379.6010
	25 L	Stainless steel drum	EM1.04379.6025
	190 L	Steel barrel	EM1.04379.9190
Methanol for analysis EMSURE® ACS, ISO, Reag. Ph Eur	10 L	Stainless steel drum	EM1.06009.6010
	25 L	Stainless steel drum	EM1.06009.6025
	180 L	Plastic Receptacle With Outer Steel Drum	EM1.06009.9180
2-Propanol for analysis EMSURE® ACS, ISO, Reag. Ph Eur	10 L	Stainless steel drum	EM1.09634.6010
	25 L	Steel drum	EM1.09634.6025
	180 L	Plastic receptacle with outer steel drum	EM1.09634.9180
Acids EMSURE®			
Hydrochloric acid 25% for analysis EMSURE®	25 L	Plastic container	EM1.00316.9025
Nitric acid 65% for analysis EMSURE® ISO	25 L	PE/Metal drum	EM1.00456.9026
ortho-Phosphoric acid 85% for analysis EMSURE® ACS, ISO, Reag. Ph Eur	25 L	Plastic container	EM1.00573.9025
Sulfuric acid 95-97% for analysis EMSURE® ISO	25 L	Plastic container	EM1.00731.9025
Caustics and bases EMSURE®			
Potassium hydroxide pellets for analysis EMSURE®	25 kg	Plastic container	EM1.05033.9025
	50 kg	Plastic container	EM1.05033.9050
Potassium hydroxide solution 47% for analysis EMSURE®	25 L	Plastic container	EM1.05545.9025
Sodium hydroxide pellets for analysis (max. 0.02% K) EMSURE® ACS, Reag. Ph Eur	5 kg	Plastic bottle	EM1.06469.5000
	50 kg	Fibre carton	EM1.06469.9050
Sodium hydroxide solution 50% for analysis EMSURE®	25 L	Plastic container	EM1.58793.9025
	200 L	PE drum	EM1.58793.9200

Additional pack sizes and products are available depending on your need. Please contact your local VWR representative for more information.

QUALITY CONTROL

EMSURE® acids, salts and solvents for your Quality Control

Your benefits:

Accuracy and reliability – Absolute trust – Every time

- Unmatched batch-to-batch consistency
- Reliable and reproducible results
- Lower analytical costs
- No repeat analyses

Convenience and safety – Packed with innovation

- Packaging is always compatible with the product
- Safe and convenient handling, storage and transportation
- Optimal protection of chemicals and reagents from contamination
- Wide choice of packaging materials and sizes

Regulatory compliance – Specified beyond standards

- Compliance with ISO 6353, ACS, Reag. Ph Eur
- Most products' specifications exceed international standards



All EMSURE® products are made from high-quality raw materials in our state-of-the-art production facilities, then tested for up to 70 parameters at our stringent quality control labs in Darmstadt, Germany. This results in outstanding chemical purity and extremely low limiting values.

Product	Content	Packaging	VWR Cat. No.	Content	Packaging	VWR Cat. No.
Solvents EMSURE®						
Acetone for analysis EMSURE® ACS, ISO, Reag. Ph Eur	1 L	Glass bottle	EM1.00014.1000	1 L	HDPE bottle	EM1.00014.1011
	2.5 L	Glass bottle	EM1.00014.2500	2.5 L	HDPE bottle	EM1.00014.2511
	4 L	Glass bottle	EM1.00014.4000	5 L	HDPE bottle	EM1.00014.5000
Chloroform for analysis EMSURE® ACS, ISO, Reag. Ph Eur	1 L	Glass bottle	EM1.02445.1000	2.5 L	Glass bottle	EM1.02445.2500
	4 L	Glass bottle	EM1.02445.4000			
Dichloromethane for analysis EMSURE® ACS, ISO, Reag. Ph Eur	1 L			2.5 L	Glass bottle	EM1.06050.2500
	4 L	Glass bottle	EM1.06050.4000			
Diethyl ether for analysis EMSURE® ACS, ISO, Reag. Ph Eur	1 L	Glass bottle	EM1.00921.1000	2.5 L	Glass bottle	EM1.00921.2500
	4 L	Glass bottle	EM1.00921.4000	5 L	Alu bottle	EM1.00921.5000
	1 L	Glass bottle	EM1.00983.1000	1 L	HDPE bottle	EM1.00983.1011
Ethanol absolute for analysis EMSURE® ACS, ISO, Reag. Ph Eur	2.5 L	Glass bottle	EM1.00983.2500	2.5 L	HDPE bottle	EM1.00983.2511
	4 L	Glass bottle	EM1.00983.4000	5 L	HDPE bottle	EM1.00983.5000
Ethanol denatured with about 1% Methyl ethyl ketone for analysis EMSURE®	1 L	HDPE bottle	EM1.00974.1011			
n-Hexane for analysis EMSURE® ACS	1 L	Glass bottle	EM1.04367.1000	2.5 L	HDPE bottle	EM1.04367.2511
	2.5 L	Glass bottle	EM1.04367.2500			
Isooctane for analysis EMSURE® ACS, Reag. Ph Eur	1 L	Glass bottle	EM1.04727.1000	4 l	Glass bottle	EM1.04727.4000
	2.5 L	Glass bottle	EM1.04727.2500			
Methanol for analysis EMSURE® ACS, ISO, Reag. Ph Eur	1 L	Glass bottle	EM1.06009.1000	1 L	HDPE bottle	EM1.06009.1011
	2.5 L	Glass bottle	EM1.06009.2500	2.5 L	HDPE bottle	EM1.06009.2511
	4 L	Glass bottle	EM1.06009.4000	5 L	HDPE bottle	EM1.06009.5000
2-Propanol for analysis EMSURE® ACS, ISO, Reag. Ph Eur	1 L	Glass bottle	EM1.09634.1000	1 L	HDPE bottle	EM1.09634.1011
	2.5 L	Glass bottle	EM1.09634.2500	2.5 L	HDPE bottle	EM1.09634.2511
	4 L	Glass bottle	EM1.09634.4000	5 L	HDPE bottle	EM1.09634.5000

Product	Content	Packaging	VWR Cat. No.	Content	Packaging	VWR Cat. No.
Acids EMSURE®						
Acetic acid (glacial) 100% anhydrous for analysis EMSURE® ACS, ISO, Reag. Ph Eur	1 L	Glass bottle	EM1.00063.1000	1 L	HDPE bottle	EM1.00063.1011
	2.5 L	Glass bottle	EM1.00063.2500	2.5 L	HDPE bottle	EM1.00063.2511
	2.5 L	Safebreak bottle	EM1.00063.2510			
Hydrochloric acid fuming 37% for analysis EMSURE® ACS, ISO, Reag. Ph Eur	1 L	Glass bottle	EM1.00317.1000			
	2.5 L	Glass bottle	EM1.00317.2500	2.5 L	Safebreak bottle	EM1.00317.2510
Hydrogen peroxide 30% (Perhydrol®) for analysis EMSURE® ISO	250 mL	HDPE bottle	EM1.07209.0250	500 mL	HDPE bottle	EM1.07209.0500
	1 L	HDPE bottle	EM1.07209.1000	2.5 L	HDPE bottle	EM1.07209.2500
	1 L	Glass bottle	EM1.00456.1000	2.5 L	Glass bottle	EM1.00456.2500
Nitric acid 65% for analysis EMSURE® ISO	2.5 L	Safebreak bottle	EM1.00456.2510			
	1 L	HDPE bottle	EM1.00573.1000	2.5 L	HDPE bottle	EM1.00573.2500
ortho-Phosphoric acid 85% for analysis EMSURE® ACS, ISO, Reag. Ph Eur	1 L	HDPE bottle	EM1.00573.1000	2.5 L	Safebreak bottle	EM1.00573.2510
	2.5 L	Safebreak bottle	EM1.00573.2510			
Sulfuric acid 25% for analysis EMSURE®	1 L	HDPE bottle	EM1.00716.1000			
	1 L	Glass bottle	EM1.00731.1000	1 L	HDPE bottle	EM1.00731.1011
Sulfuric acid 95–97% for analysis EMSURE® ISO	2.5 L	Glass bottle	EM1.00731.2500	2.5 L	HDPE bottle	EM1.00731.2511
	2.5 L	Safebreak bottle	EM1.00731.2510			
Salts EMSURE®						
Potassium chloride for analysis EMSURE®	500 g	HDPE bottle	EM1.04936.0500	1 kg	HDPE bottle	EM1.04936.1000
	5 kg	HDPE bottle	EM1.04936.5000			
Potassium dihydrogen phosphate for analysis EMSURE® ISO	250 g	HDPE bottle	EM1.04873.0250	1 kg	HDPE bottle	EM1.04873.1000
	5 kg	HDPE bottle	EM1.04873.5000			
Potassium iodide for analysis EMSURE® ISO, Reag. Ph Eur	250 g	HDPE bottle	EM1.05043.0250	500 g	HDPE bottle	EM1.05043.0500
di-Potassium hydrogen phosphate anhydrous for analysis EMSURE®	1 kg	HDPE bottle	EM1.05043.1000	2.5 kg	HDPE bottle	EM1.05043.2500
	1 kg	HDPE bottle	EM1.05104.1000			
Silver nitrate for analysis EMSURE® ACS, ISO, Reag. Ph Eur	25 g	HDPE bottle	EM1.01512.0025	100 g	HDPE bottle	EM1.01512.0100
	250 g	HDPE bottle	EM1.01512.0250	1 kg	HDPE bottle	EM1.01512.1000
Sodium chloride for analysis EMSURE® ACS, ISO, Reag. Ph Eur	500 g	HDPE bottle	EM1.06404.0500	1 kg	HDPE bottle	EM1.06404.1000
	5 kg	HDPE bottle	EM1.06404.5000			
tri-Sodium citrate dihydrate for analysis EMSURE® ACS, ISO, Reag. Ph Eur	500 g	HDPE bottle	EM1.06448.0500	1 kg	HDPE bottle	EM1.06448.1000
	5 kg	HDPE bottle	EM1.06448.5000			
Sodium dihydrogen phosphate monohydrate for analysis EMSURE® ACS, Reag. Ph Eur	500 g	HDPE bottle	EM1.06346.0500	1 kg	HDPE bottle	EM1.06346.1000
di-Sodium hydrogen phosphate dihydrate for analysis EMSURE®	500 g	HDPE bottle	EM1.06580.0500	1 kg	HDPE bottle	EM1.06580.1000
	5 kg	HDPE bottle	EM1.06580.5000			
Sodium sulfate anhydrous for analysis EMSURE® ACS, ISO, Reag. Ph Eur	500 g	HDPE bottle	EM1.06649.0500	1 kg	HDPE bottle	EM1.06649.1000
	5 kg	HDPE bottle	EM1.06649.5000			

Additional pack sizes and products are available depending on your need. Please contact your local VWR representative for more information.

QUALITY CONTROL

SupraSolv® Solvents for Gas Chromatography

With gas chromatography, only solvents with the highest levels of purity are suitable for tasks such as the extraction and concentration of the sample before injection. Our solvents are developed specially for this highly sophisticated application area.

Comprehensive application area

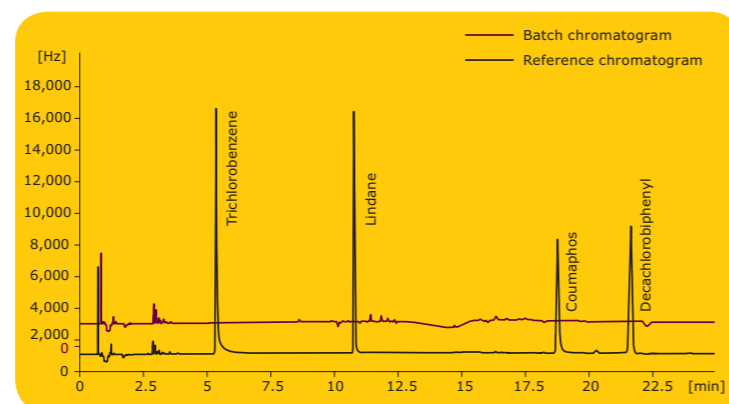
- Due to the largest retention time range

Analytical reliability

- Due to the highest possible purity and a minimal signal-to-noise ratio

Time and cost savings

- Due to the best possible batch consistency, thus avoiding analysis repetition



Pesticide analysis in waste water: GC-ECD, batch and reference chromatogram (Lindane = 3 pg/ml), n-Hexane SupraSolv® EDC and FID



Product	Content	Packaging	VWR Cat. No.
SupraSolv® solvents for gas chromatography ECD and FID			
Acetone for gas chromatography ECD and FID SupraSolv®	2.5 L	Glass bottle	EM1.00012.2500
n-Hexane for gas chromatography ECD and FID SupraSolv®	2.5 L	Glass bottle	EM1.04371.2500
Dimethyl sulfoxide for headspace gas chromatography SupraSolv®	1 L	Glass bottle	EM1.01900.1000
Cyclohexane for gas chromatography ECD and FID SupraSolv®	2.5 L	Glass bottle	EM1.02817.2500
Dichloromethane for gas chromatography ECD and FID SupraSolv®	2.5 L	Glass bottle	EM1.06054.2500

Additional pack sizes and products are available depending on your need. Please contact your local VWR representative for more information.

QUALITY CONTROL

Certipur® | Atomic Absorption Spectroscopy

The quality control of our ICP single-element standards is carried out by the accredited calibration laboratory according to DIN EN ISO/IEC 17025. They are directly traceable to primary reference material from NIST. A Certificate of Analysis is enclosed in each package.

- ICP standards according to ISO 17025 and ISO Guide 34
- Standards are traceable to primary standards
- ICP standards with an extensive Certificate of Analysis



Product	Content	Packaging	VWR Cat. No.
Certipur® ICP standards			
Calcium Alcium ICP standard traceable to SRM FR	100 mL	10,000 mg/L	EM1.70373.0100
Rhodium ICP standard traceable to SRM FR	100 mL	1,000 mg/L	EM1.70345.0100
Potassium ICP standard traceable to SRM	100 mL	10,000 mg/L	EM1.70377.0100
Sodium ICP standard traceable to SRM FRO	100 mL	10,000 mg/L	EM1.70381.0100
Copper ICP standard traceable to SRM FRO	100 mL	1,000 mg/L	EM1.70314.0100
Aluminium ICP standard traceable to SRM	100 mL	1,000 mg/ L	EM1.70301.0100

Additional pack sizes and products are available depending on your need. Please contact your local VWR representative for more information.

QUALITY CONTROL AND ENVIRONMENTAL TESTING

Just insert, prove and proceed

The new Spectrophotometers from MilliporeSigma are designed to simplify your workflow and ensure reliable results for your water analysis.

In combination with the Spectroquant® Test Kits you can leverage the full potential of the instruments and get reliable results concerning your process water or waste water chemicals contents.

Your benefits:

- Easy monitoring of water quality
- Large variety of ready-to-use kits
- Live ID provides the method and selects the right settings
- Robust & easy to clean instrument



Product	Packaging	VWR Cat. No.
Spectroquant® Spectrophotometer		
Spectroquant® Prove 600 UV/VIS spectrophotometer	1 pcs	EM1.73018.0001
Spectroquant® Prove 100 VIS spectrophotometer	1 pcs	EM1.73016.0001
Spectroquant® Cell Tests		
SQ COD CT 25–1,500 mg	25 tests/box	EM1.14541.0007
COD Cell Test Method: photometric 10–150 mg/l Spectroquant®	25 tests/box	EM1.14540.0007
Silicate (Silicic Acid) Test Method: photometric 0.0005–0.5000 mg/l Si ₂ O ₂ Spectroquant®	100 tests/box	EM1.01813.0007
Sulfate Test Method: photometric 0.50–50.0 mg/l SO ₄ ²⁻ Spectroquant®	100 tests/box	EM1.01812.0001
COD Cell Test Method: photometric 300–3,500 mg/l Spectroquant®	25 tests/box	EM1.14691.0007
COD Cell Test Method: photometric 500–10,000 mg/l Spectroquant®	25 tests/box	EM1.14555.0007
Phosphate Cell Test 0.5–25.0 mg/l PO ₄ -P 1.5–76.7 mg/l PO ₄ ³⁻ 1.1–57.3 mg/l P ₂ O ₅ Spectroquant®	25 tests/box	EM1.14729.0007
Phosphate Cell Test 0.05–5.00 mg/l PO ₄ -P 0.2–15.3 mg/l PO ₄ ³⁻ 0.11–11.46 mg/l P ₂ O ₅ Spectroquant®	25 tests/box	EM1.14543.0007
Surfactants (nonion.) Cell Test Method: photometric 0.10–7.50 mg/l Triton® X-100 Spectroquant®	25 tests/box	EM1.01787.0001
Ammonium Cell Test Method: photometric 4.0–80.0 mg/l NH ₄ -N 5.2–103.0 mg/l NH ₄ ⁺ Spectroquant®	25 tests/box	EM1.14559.0001
Ammonium Cell Test Method: photometric 0.5–16.0 mg/l NH ₄ -N 0.6–20.6 mg/l NH ₄ ⁺ Spectroquant®	25 tests/box	EM1.14544.0001
Nitrate Cell Test Method: photometric, DMP 0.5–25.0 mg/l NO ₃ -N 2.2–110.7 mg/l NO ₃ ⁻ Spectroquant®	25 tests/box	EM1.14563.0001
Nitrogen (total) Cell Test Method: photometric 0.5–15.0 mg/l N Spectroquant®	25 tests/box	EM1.14537.0001
Nitrite Cell Test Method: photometric 0.03–2.30 mg/l NO ₂ ⁻ 0.010–0.700 mg/l NO ₂ -N Spectroquant®	25 tests/box	EM1.14547.0001

Additional instruments and rapid tests are available depending on your need. Please contact your local VWR representative for more information.



SAFETY

Make your Lab a safer place: Solvents, acids and bases in 2.5 l HDPE bottles

Your benefits of using an HDPE bottle:

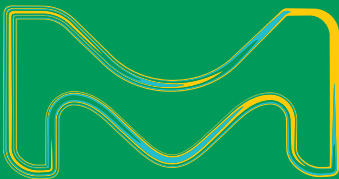
- No risk of breakage when handling hazardous or dangerous goods
- Integrated carrier handle for optimal handling
- Optimal center of gravity shift for convenient pouring
- Easy and environment-friendly disposal (no polystyrene outer packaging)
- Base of the bottle redesigned to ensure optimized stability

Product	Content	Packaging	VWR Cat. No.
Solvents			
Acetone for analysis EMSURE® ACS, ISO, Reag. Ph Eur	2.5 L	HDPE bottle	EM1.00014.2511
Cyclohexane for analysis EMSURE® ACS, ISO, Reag. Ph Eur	2.5 L	HDPE bottle	EM1.09666.2511
Dimethyl sulfoxide for analysis EMSURE® ACS	2.5 L	HDPE bottle	EM1.02952.2511
Ethanol absolute for analysis EMPARTA® ACS	2.5 L	HDPE bottle	EM1.07017.2511
Ethanol absolute for analysis EMSURE® ACS, ISO, Reag. Ph Eur	2.5 L	HDPE bottle	EM1.00983.2511
Ethyl acetate EMPLURA®	2.5 L	HDPE bottle	EM8.22277.2500
Ethyl acetate for analysis EMSURE® ACS, ISO, Reag. Ph Eur	2.5 L	HDPE bottle	EM1.09623.2511
n-Heptane for analysis EMSURE® Reag. Ph Eur	2.5 L	HDPE bottle	EM1.04379.2511
n-Hexane for analysis EMPARTA® ACS	2.5 L	HDPE bottle	EM1.07023.2511
Methanol EMPLURA®	2.5 L	HDPE bottle	EM8.22283.2500
Methanol for analysis EMSURE® ACS, ISO, Reag. Ph Eur	2.5 L	HDPE bottle	EM1.06009.2511
1-Methyl-2-pyrrolidone EMPLURA®	2.5 L	HDPE bottle	EM8.06072.2500
2-Propanol for analysis EMPARTA® ACS	2.5 L	HDPE bottle	EM1.07022.2511
2-Propanol for analysis EMSURE® ACS, ISO, Reag. Ph Eur	2.5 L	HDPE bottle	EM1.09634.2511
Toluene for analysis EMSURE® ACS, ISO, Reag. Ph Eur	2.5 L	HDPE bottle	EM1.08325.2511
Acids			
Acetic acid (glacial) 100% anhydrous for analysis EMSURE® ACS, ISO, Reag. Ph Eur	2.5 L	HDPE bottle	EM1.00063.2511
Acetic acid (glacial) 100% for analysis EMPARTA® ACS	2.5 L	HDPE bottle	EM1.01830.2500
Hydrochloric acid 25% for analysis EMSURE®	2.5 L	HDPE bottle	EM1.00316.2511
Hydrochloric acid 32% for analysis EMSURE®	2.5 L	HDPE bottle	EM1.00319.2511
Hydrogen peroxide 30% (Perhydrol®) for analysis EMSURE® ISO	2.5 L	HDPE bottle	EM1.07209.2500
ortho-Phosphoric acid 85% for analysis EMSURE® ACS, ISO, Reag. Ph Eur	2.5 L	HDPE bottle	EM1.00573.2500
Sulfuric acid 95–97% for analysis EMSURE® ISO	2.5 L	HDPE bottle	EM1.00731.2511
Bases			
Sodium hydroxide solution about 32% (for the determination of nitrogen) for analysis EMSURE®	2.5 L	HDPE bottle	EM1.05590.2500
Sodium hydroxide solution about 32% EMPLURA®	2.5 L	HDPE bottle	EM1.05587.2500

Additional pack sizes and products are available depending on your need. Please contact your local VWR representative for more information.

We provide information and advice to our customers on application technologies and regulatory matters to the best of our knowledge and ability, but without obligation or liability. Existing laws and regulations are to be observed in all cases by our customers. This also applies in respect to any rights of third parties. Our information and advice do not relieve our customers of their own responsibility for checking the suitability of our products for the envisaged purpose.

www.vwr.com/milliporesigma



© 2018 Merck KGaA, Darmstadt, Germany and/or its affiliates. All Rights Reserved. MilliporeSigma and the vibrant M are trademarks of Merck KGaA, Darmstadt, Germany or its affiliates. All other trademarks are the property of their respective owners. Detailed information on trademarks is available via publicly accessible resources.

2018-16665



800 932 5000 | VWR.COM

Prices and product details are current when published and subject to change without notice. | Certain products may be limited by federal, state, provincial, or local regulations. | VWR, part of Avantor, makes no claims or warranties concerning sustainable/green products. Any claims concerning sustainable/green products are the sole claims of the manufacturer and not those of VWR International, LLC and/or Avantor, Inc. or affiliates. All prices are in US dollars unless otherwise noted. Offers valid in US and Canada, void where prohibited by law or company policy, while supplies last. | Trademarks are owned by Avantor, Inc. or its affiliates, unless otherwise noted. | Visit vwr.com to view our privacy policy, trademark owners, and additional disclaimers. © 2019 Avantor, Inc. All rights reserved.