

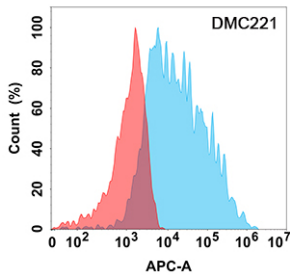
Anti-Interferon alpha/beta Receptor 1 Chimeric Antibody [DMC221] - Azide free (A318796)

Specifications:

Name:	Anti-Interferon alpha/beta Receptor 1 Chimeric Antibody [DMC221] - Azide free
Description:	Recombinant chimeric monoclonal [DMC221] antibody to Interferon alpha/beta Receptor 1.
Applications:	ELISA, Flow Cytometry
Recommended Dilutions:	ELISA: 1:5,000-10,000, Flow Cytometry: 1:100
Reactivity:	Human
Host:	Rabbit / Human
Clonality:	Monoclonal
Clone ID:	DMC221
Isotype:	IgG1
Conjugate:	Unconjugated
Purification:	Affinity chromatography.
Concentration:	Reconstitution dependent.
Product Form:	Lyophilized
Formulation:	Lyophilized from sterile Phosphate Buffered Saline, pH 7.4. Normally 5%-8% Trehalose is added as a protectant before lyophilization.
Storage:	Shipped at 4°C. Lyophilized: Store at -20°C to -80°C. Reconstituted: Aliquot and store at -80°C. Product is stable for one year. Avoid freeze / thaw cycles.
General Notes:	This antibody is a Recombinant rabbit chimeric monoclonal antibody containing human IgG1 Fc.
Disclaimer:	This product is for research use only. It is not intended for diagnostic or therapeutic use.

Anti-Interferon alpha/beta Receptor 1 Chimeric Antibody [DMC221] - Azide free (A318796)

Images:



Flow cytometry analysis with Anti-Interferon alpha/beta Receptor 1 Chimeric Antibody [DMC221] - Azide free (A318796) on Expi293 cells transfected with human IFNAR1 (blue histogram) or Expi293 transfected with irrelevant protein (red histogram).