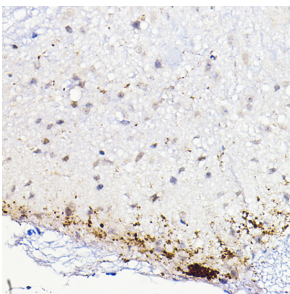


Anti-CGRP Antibody (A305378)

Specifications:

Name:	Anti-CGRP Antibody
Description:	Rabbit polyclonal antibody to CGRP.
Applications:	IHC
Recommended Dilutions:	WB: 1:500-1:2,000, IHC: 1:50-1:200
Reactivity:	Mouse
Immunogen:	Recombinant fusion protein containing a sequence corresponding to amino acids 26-128 of CALCA (NP_001029125.1).
Sequence:	APFRSALESSPADPATLSEDEARLLLAALVQDYVQMKASELEQEQEREGSRIIAQKRA CDTATCVTHRLAGLLSRGGVVKNNFVPTNVGSKAFGRRRRDLQA
Host:	Rabbit
Clonality:	Polyclonal
Isotype:	IgG
Conjugate:	Unconjugated
Purification:	Affinity purification.
Molecular Weight:	14 kDa
Product Form:	Liquid
Formulation:	Supplied in Phosphate Buffered Saline, pH 7.3, with 50% Glycerol and 0.01% Thiomersal.
Storage:	Shipped at 4°C. Upon delivery aliquot and store at -20°C. Avoid freeze / thaw cycles.
Disclaimer:	This product is for research use only. It is not intended for diagnostic or therapeutic use.

Images:



Immunohistochemistry analysis of paraffin-embedded mouse spinal cord using Anti-CGRP Antibody (A305378) at a dilution of 1:100 (40x lens). Perform high pressure antigen retrieval with 10 mM citrate buffer pH 6.0 before commencing with IHC staining protocol.