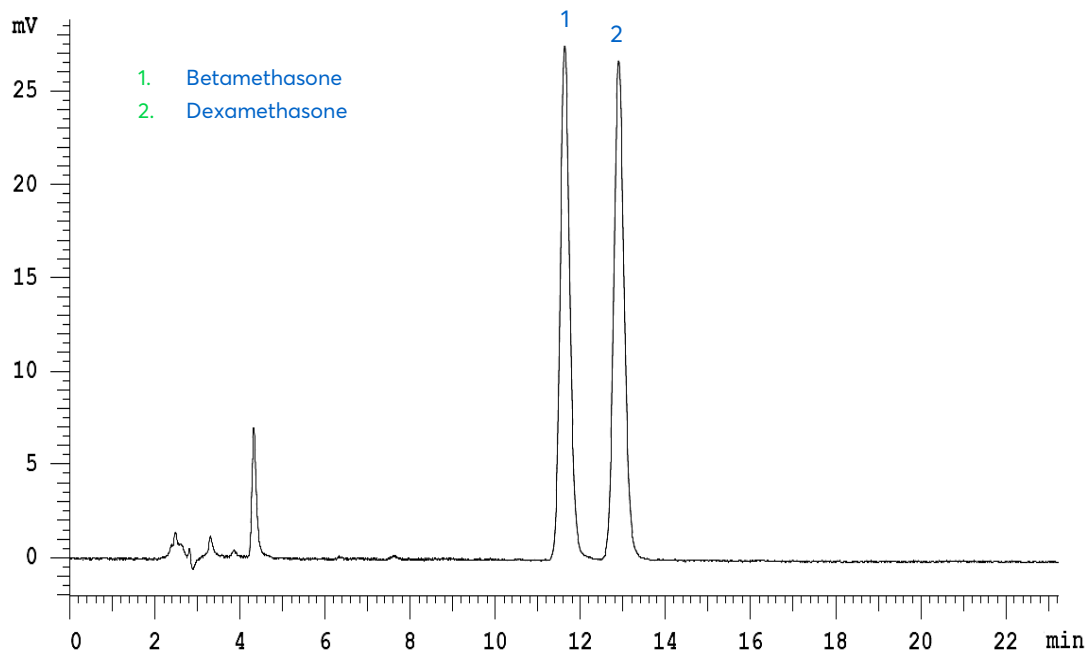


## Application note #6370

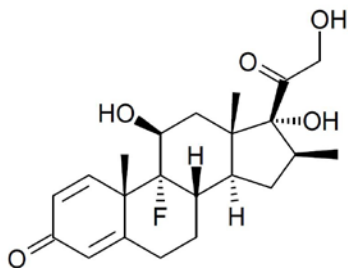
# Dexamethasone and Related Substances



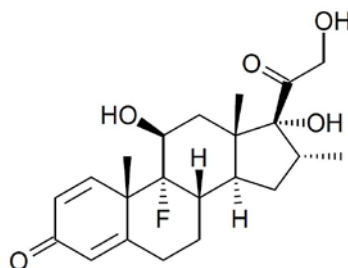
# Method Details

## CONDITIONS

Column:	ACE Excel 5 C18
Dimensions:	250 x 4.6 mm
Mobile Phase:	40 mM KH <sub>2</sub> PO <sub>4</sub> and 24 mM hexylamine in MeCN:H <sub>2</sub> O (71:29 v/v)
Flow Rate:	1.0 mL/min
Injection:	20 µL
Temperature:	Ambient
Detection:	UV, 254 nm
Monograph method:	EP 6.0



**Structure 1:** Betamethasone



**Structure 2:** Dexamethasone

## ORDERING TABLE

Product	Details	Size	Part Number
ACE Excel 5 C18	HPLC column	250 x 4.6 mm	76393-940
J.T.Baker Acetonitrile ≥99.9%	Amber glass bottle	Each(1/ltm/Bx) or Case of 4	JT9017-33
J.T.Baker HiPerSolv CHROMANORM®	Aluminum bottle	Each (4l) or Case of 4	BDH83639.402
J.T.Baker Potassium Dihydrogen Phosphate ≥99.0%	Wide mouth amber glass bottle	Each (2,500g)	JT4008-5
J.T.Baker HiPerSolv CHROMANORM® for HPLC	Poly bottle	Each (500g)	BDH153184U
J.T.Baker Water, ANALYZED® HPLC for HPLC/UHPLC	Amber glass bottle, narrow mouth	Each(1/ltm/Bx)	JT4218-3
Water, HiPerSolv CHROMANORM® Water, for HPLC	Amber glass bottle	Case of 4 (1/ ltm/Bx)	BDH23595.400

[vwr.com/ace](http://www.vwr.com/ace)  
[chromsupport@avantorsciences.com](mailto:chromsupport@avantorsciences.com)