



MDF-DU703VH-PA | 76637-154

VIP® ECO SMART

MDF-DU703VH-PA, 220V | 76637-154
MDF-DU703VHA-PA, 115V | 76637-152

ENERGY STAR® Certified
Natural Refrigerant -86°C Freezer

25.7 cu.ft. | 729 L



Independently tested and documented, the ENERGY STAR® Certified VIP® ECO SMART delivers the lowest daily energy usage of any ultra-low temperature freezer in its class: 5.4 kWh per day. Purpose-designed for the temperature uniformity and stability required for the life sciences.

Performance and Reliability

Next generation engineering harnesses the power of inverter compressor technology to yield greater temperature uniformity. Reserve refrigeration power delivers fast temperature recovery following door openings. Performance and reliability is never compromised when it comes to storing your valued products.

Industry's Lowest Energy Consumption¹

This freezer delivers lower energy consumption without compromising performance. The VIP ECO SMART uses 30% less energy than other leading ENERGY STAR listed freezers.

- 0.21 kWh/cu.ft. Daily Energy Consumption
- 5.4 kWh/day, Steady State at -80°C
- 4.5 kWh/day, Steady State at -70°C

Temperature Uniformity

- ±3.0°C at -80°C
- ±3.0°C at -70°C

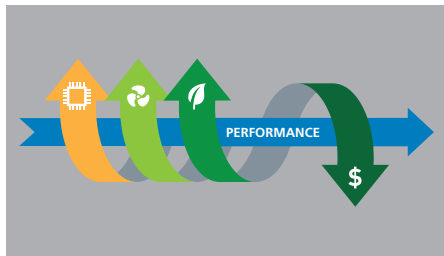
Security Control and Monitoring

An eye level, door mounted 10.1 inches high resolution LCD touchscreen allows full user control. A USB port makes transferring logged data to a PC convenient. All performance attributes are displayed and an internal temperature log can be expressed in graphic form over time.



Frost Mitigation

Simplified one-handed operation maintains the integrity of the door seal to assure energy efficiency, resulting in less frost build up and maintenance. Perimeter heater under the gasket allows for gentle warmth reducing ice buildup. The EZlatch handle is the centerpiece of a holistic access and frost mitigation system.



Natural Refrigerants

Natural refrigerants minimize environmental impact and allow for greater efficiency, resulting in less energy consumption and less heat output.



Controlled Freezer Access

Know who entered the freezer and when. Track how long the door was open.

3 Ways to Lock

- Facial recognition
- Keypad
- Proximity card (Optional)*

**Available in the US and Canada only*



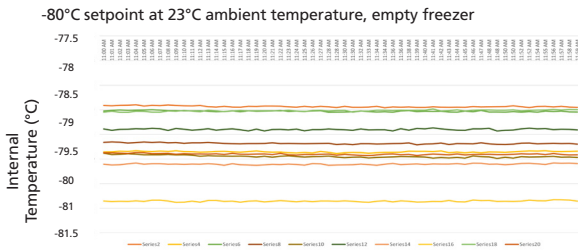
The outer door gasket is easily removed and replaced without tools while the freezer remains in operation.

Model MDF-DU703VH-PA | 76637-154 shown with three shelves supplied standard. Additional shelves available.

SMART Performance

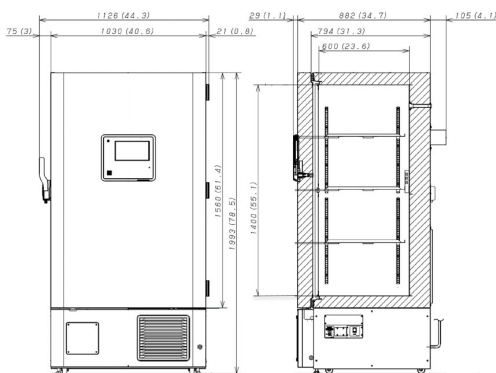
Inverter driven compressors with SMART control allow for superior uniformity by only running compressors at slower speed under steady state conditions. Proprietary algorithms give the control that allows extremely tight uniformity.

Temperature Uniformity Data:



Dimensions

Unit : inch | mm



avantor™ delivered by **VWR**™ VWR.COM

Prices, product, and/or services details are current when published and subject to change without notice. | Certain products or services may be limited by federal, state, provincial, or local regulations. | VWR, part of Avantor, makes no claims or warranties concerning sustainable/green products. Any claims concerning sustainable/green products are the sole claims of the manufacturer and not those of VWR International, LLC and/or Avantor, Inc. or affiliates. All prices are in US dollars unless otherwise noted. Offers valid in US, void where prohibited by law or company policy, while supplies last. | Trademarks are owned by Avantor, Inc. or its affiliates, unless otherwise noted. | Visit vwr.com to view our privacy policy, trademark owners, and additional disclaimers. © 2023 Avantor, Inc. All rights reserved.

VWR is an authorized distributor for PHC Corporation of North America.

Model Number	MDF-DU703VH-PA 76637-154	MDF-DU703VHA-PA 76637-152
External Dimensions (W x D x H) ¹⁾	inches mm 40.6 x 34.7 x 78.5 1030 x 882 x 1993	
Internal Dimensions (W x D x H)	inches mm 34.3 x 23.6 x 55.1 870 x 600 x 1400	
Volume	cu.ft. liters 25.7 729	
Net Weight	lbs kg 608 276	
2" box and Racks- Capacity	Box Rack 576 24	
3" box and Racks- Capacity	Box Rack 384 24	
Performance		
Temperature Control Range	°C	-40 to -86
Uniformity ²⁾	°C	+/-3 (-80 Set point)
Power Consumption	kWh/Day	5.4 (-80 °C Steady State)
BTU Nominal	Per Hour	768
Noise Level ³⁾	dB(A)	52
Ambient Temperature Operating Range	°C	+5 to +30
Control		
Controller	Microprocessor with non-volatile memory, USB connectivity, IOT Ready ⁴⁾	
Digital Temperature Display	LCD Touchscreen	
Controller Security	Screen lock w/ password protection, facial recognition, NFC ⁵⁾	
Temperature Sensor	RTD	
Refrigeration		
Cooling Method	Cold Wall (Synchronized variable speed cascade system)	
Compressors	High Stage Low Stage	750 W Variable 750 W Variable
Refrigerant Type (Natural Refrigerant)	High Stage Low Stage	R-290 R-170
Insulation	Rigid polyurethane foam (PUF) + VIP Plus vacuum insulated panels	
Construction		
Exterior Material	Painted steel	
Interior Material	Painted steel	
Outer Door	qty	1 lock with set of 2 keys and electronic lock (provision for optional pad lock)
Inner Doors	qty	2 insulated stainless steel with latch
Shelves	qty	3 (adjustable)
Shelf Dimensions (W x D)	inches mm	33.7 x 21 855 x 534
Max. Load per Shelf	lbs kg	110 50
Access Ports, Qty, Position, Diameter	qty	3: upper wall (back-up system), bottom left (recorder sensor), bottom right (access) 0.6 in 17mm
Castors Leveling Legs	qty	4 2
Vacuum Release	qty	1 Auto
Alarms (V= Visual Alarm, B= Buzzer Alarm, R= Remote Alarm, A= Adjustable, L= Logged, D= Settable delay)		
Power Failure	V-B-R-L	
Temperature (High and Low)	V-B-R-L-A	
Sensor Failure	V-B-R-L	
Door Open	V-B-L	
Maintenance Alert	V	
Remote Alarm Contacts	DC 30V 2A (normally open, normally closed, common)	
Electrical and Noise Level		
Power Supply		220V, NEMA 6-15P, 60 Hz 8ft cord length 115V, NEMA 5-15P, 60 Hz 8ft cord length
Max Amps	6.7 11	
Options		
Circular Type Chart Recorders	MTRC954 97014-882	
Chart Paper/ Ink Pen	C7100386REV 76490-366 / R252 76452-714	
Backup system	MDF-UB9-PW 76637-156 MDF-UB9-PW-LN2	
Inner Door Kit with Smaller Doors	qty	(4) MDF-7ID4-PW 76501-142 (5) MDF-7ID5-PW 76501-144
Proximity Cards	qty	(5) MTR-IC-PW 76637-158
NFC Module	MTR-NFC-PW 76637-160	
Optional Communication System		
Wireless, Cloud-Based, Automatic Data Management	Lab Alert ⁶⁾	
4-20mA Output Module	MTR420MAC- Self Powered MTR420MAL- Loop Powered	
Certifications and Warranty		
Certification	QPS Listed and Energy Star	
Warranty ⁶⁾	5 years parts and labor	

¹⁾ Exterior dimensions of cabinet excluding handle, rear stand-off brackets and other external projections.

²⁾ 3rd party testing lab using 9 temperature points with 75°F ambient temperature.

³⁾ Nominal value, background noise 20 dB(A).

⁴⁾ Unit software ready for future IOT options.

⁵⁾ NFC is an optional unlock method for Electronic Lock, accessory part number MTR-NFC-PW | 76637-160 and MTR-IC-PW | 76637-158; US and Canada only.

⁶⁾ Current warranty offered at time of printing and may be subject to change; US and Canada only.

Specifications are subject to change without notice.

For latest specification information contact PHC Corporation of North America at info@us.phcd.com. Performance data herein is based on independent testing at time of publication.

