

FOOD MICROBIOLOGY



TABLE OF CONTENTS

Environmental Monitoring

1

Sample Prep and Dilution

7

Dehydrated Culture Media - Criterion™

8

Prepared Culture Media

10

Chromogenic Media - HardyCHROM™

14

CompactDry™

16

Membrane Filtration

19

Rapid Tests

20



800 932 5000 | VWR.COM

Prices and product details are current when published and subject to change without notice. | Certain products may be limited by federal, state, provincial, or local regulations. | VWR, part of Avantor, makes no claims or warranties concerning sustainable/green products. Any claims concerning sustainable/green products are the sole claims of the manufacturer and not those of VWR International, LLC and/or Avantor, Inc. or affiliates. All prices are in US dollars unless otherwise noted. Offers valid in US, void where prohibited by law or company policy, while supplies last. | Trademarks are owned by Avantor, Inc. or its affiliates, unless otherwise noted. | Visit vwr.com to view our privacy policy, trademark owners, and additional disclaimers. © 2019 Avantor, Inc. All rights reserved.

Environmental Monitoring



Hardy Diagnostics offers a wide selection of quality products intended to help keep you up to date with regulatory compliance, ensure the efficacy of your cleaning protocol, and properly monitor your environment.

Environmental Monitoring Air Sampling



TRIO.BAS™
BIOLOGICAL AIR SAMPLER

TRIO.BAS™ Impact Air Samplers introduced the newest generation of microbial air sampling. These ergonomically designed instruments combine precise air sampling with modern connectivity to help you properly assess the air quality of your laboratory and simplify your process.

MONO



Each kit includes:

TRIO.BAS™ MONO air sampler, induction battery charger and cable, aspirating head, cover head, hard shell carrying case, and calibration certificates.

100 liters/min., contact plate	76076-704
100 liters/min., Petri plate	76169-642
200 liters/min., contact plate	76076-706
200 liters/min., Petri plate	76169-644

DUO



Each kit includes:

TRIO.BAS™ DUO air sampler, battery charger and cable, aspirating heads, cover heads, hard shell carrying case, and calibration certificates.

100 liters/min., contact plate	76076-708
100 liters/min., Petri plate	76169-646
200 liters/min., contact plate	76076-710
200 liters/min., Petri plate	76169-648



TRIO.BAS[™]
BIOLOGICAL AIR SAMPLER

TRIO.GAS

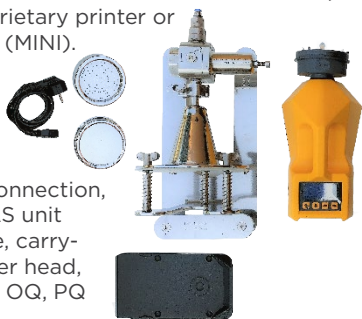
Designed to test the presence of microorganisms in compressed air or gas lines.



- Calibrated regulator guarantees 100 liters per minute flow rate
- Each component of the TRIO.GAS adapter instrument is autoclavable with no disassembly required
- Automated to end sample after programmed volume is reached (when used with MONO or MINI instrument)
- Signal lets operator know the sample is complete (with MONO or MINI instrument)
- Sampling data is retrievable for download via proprietary printer or dedicated software (MONO) or to record manually (MINI).
- No glass valves or meters to crack or break

TRIO.GAS System and Air Sampler Kit includes:

TRIO.GAS system (stainless steel electro-valve, gas connection, stainless steel fixing system for air sampler), TRIO.BAS unit (MINI or MONO), induction battery charger and cable, carrying case (for TRIO.GAS system), aspirating head, cover head, LIGHT carrying case (for TRIO.BAS unit), and two IQ, OQ, PQ fillable documents for the instrument and TRIO.GAS.



TRIO.GAS System + MONO air sampler, 100 liters/min., contact plate

TRIO.GAS System + MONO air sampler, 100 liters/min., Petri plate

TRIO.GAS System + MINI air sampler, 100 liters/min., contact plate

TRIO.GAS System + MINI air sampler, 100 liters/min., Petri plate

VWR Cat. No.

76196-430

76196-432

76196-438

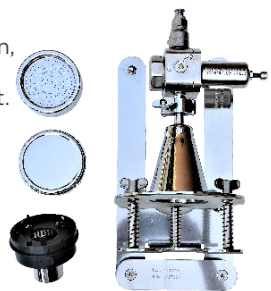
76196-440

TRIO.GAS System Aspirating Chamber Kit includes:

TRIO.GAS system (stainless steel electro-valve, gas connection, stainless steel fixing system for air sampler), carrying case, aspirating head, cover head, and IQ, OQ, PQ fillable document. TRIO.BAS instrument (MONO or MINI) **NOT** included.

Important Note:

If **manually** timed samples and hand recorded sampling data is acceptable, the MINI or MONO instrument is not necessary. Purchase the GAS system BAS652K or BAS653K, which includes aspirating gas chambers. Choose kit based on preferred plate size.



TRIO.GAS System Aspirating chamber kit, contact plate

TRIO.GAS System Aspirating chamber kit, Petri plate

VWR Cat. No.

76196-434

76196-436

Environmental Monitoring ATP Monitoring

The EnSURE™ monitoring system is designed to be used for multiple quality and food safety tests. Users can use the system for ATP hygiene monitoring or incorporates rapid microorganism tests for environmental monitoring and finished product testing.



Perfect for your HACCP and
Regulatory Compliance SOP's!

EnSURE™ monitoring system.....10145-974

ATP tests for the EnSure™ unit

Product	Specifications	VWR Cat. No.
UltraSnap™ <i>Best Seller!</i>	ATP surface test, 100/bx	10142-318
SuperSnap™	High sensitivity ATP Surface Test, 100/bx	89492-624
AquaSnap™ Free	ATP water test, 100/bx	10222-314

Non-ATP color change indicator test for environmental surfaces

Product	Specifications	VWR Cat. No.
ALLER-Snap™ Protein Residue Test Swab	Protein residue test, 100/bx	10062-760
SpotCheck Plus™	Glucose, Lactose residue test, 100/bx	10154-026

Environmental Monitoring Surface Sampling

LOK TIGHT™

Contact Plates
for Surface
Sampling



Contact Plate Media

VWR Cat. No.

Tryptic Soy Agar (TSA) - Use with TRIO.GAS!	89408-026
Baird-Parker Agar	89407-364
D/E Neutralizing Agar	89407-482
Eosin Methylene Blue (EMB)	89407-510
HardyCHROM™ ECC	89407-354
Malt Extract Agar (MEA)	89407-728
Mannitol Salt Agar (MSA)	89407-714
Potato Dextrose Agar (PDA) with Chlor-tetracycline	89501-564
R2A Agar	89407-842
Rose Bengal Agar with Chlorampenicol	89407-860
SabDex (Sabouraud Dextrose) Agar - Use with TRIO.BAS!	89407-878
Standard Methods Agar	75814-008

EnviroTrans™

ENVIRONMENTAL SWAB RINSE KIT



EnviroTrans™

Specifications

VWR Cat. No.

EnviroTrans™ Neutralizing Buffer	2ml, 20/bx 5ml, 20/bx	89407-764 89407-766
EnviroTrans™ Letheen Broth	5ml, 20/bx	89407-672
EnviroTrans™ Saline, 0.85%	0.5ml, 20/bx 2ml, 20/bx 5ml, 20/bx	89407-912 89407-914 89407-916
EnviroTrans™ D/E Neutralizing Broth	5ml, 20/bx	89407-470
EnviroTrans™ Neutralizing Saline	5ml, 20/bx	89407-512

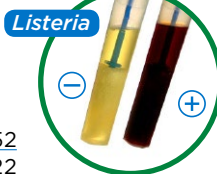
PDX-LIB Listeria (AOAC-RI)

Presumptive results available within 30 hours for the most common *Listeria* spp. (No sub-culturing or specimen transfers required). Light brown to black color formation indicates presence of *Listeria* spp. AOAC-RI approved.

ENVIROMAX™ swab are not included.

PDX-LIB Media, 25/case 89404-952

EnviroMax® Swab, 250/bx 89405-022



PDX-SIB Salmonella (AOAC)

Presumptive results available within 24-48 hours for the most common *Salmonella* spp. (No sub-culturing or specimen transfers required). Color shift from purple to yellow indicates presence of *Salmonella* spp. AOAC-RI approved.

ENVIROMAX™ swab not included.

PDX-SIB Media, 25/case 89404-954

EnviroMax® Swab, 250/bx 89405-022



Environmental Monitoring Flock Floor Sampling



A collection system for monitoring *Salmonella* contamination in flock floor litter and other surfaces.

This one size fits all shoe cover is ready-to-use and pre-moistened with skim milk. This unique design allows for highly efficient sample collection, secure transport, pre-enrichment incubation, and disposal all in the same container! Simply remove the EnviroBootie™ from the sterile sample bag, place the boot swab over a plastic boot cover, then walk through the poultry barn. EnviroBootie™ can also be used as a sampling mitt for belts, feeders, and other recommended sampling surfaces.



EnviroBootie™

2 pre-moistened (2X skim milk) boot swabs
per bag (Twil-em™ bag),

50/pk (100 total count)

10158-946

1 pre-moistened (2X skim milk) boot swab
per bag (Twil-em™ bag),

100/pk (100 total count)

10158-932



Our pre-filled Dilulok™ dilution vial is designed especially for the food, dairy, and water industries. Each lot is meticulously tested for pH, sterility, and fill volume. Designed and packaged to eliminate leaking.



Dilu-Lok™		
Product	Specifications	VWR Cat. No.
Butterfield's Phosphate Buffer	90ml fill, 50/pk	89407-110
	99ml fill, 50/pk	89407-112
Phosphate Buffer with MgCl	90ml fill, 50/pk	89407-114
	99ml fill, 50/pk	89407-116
Peptone Water 0.1% (Irradiated)	90ml fill, 50/pk	89407-106
	99ml fill, 50/pk	89407-108
Deionized Water	90ml fill, 50/pk	89407-100
	99ml fill, 50/pk	89407-102
Buffered Peptone Water	90ml fill, with 1% Tween® 20, 50/pk	89407-098
	90ml fill, 50/pk	89407-096

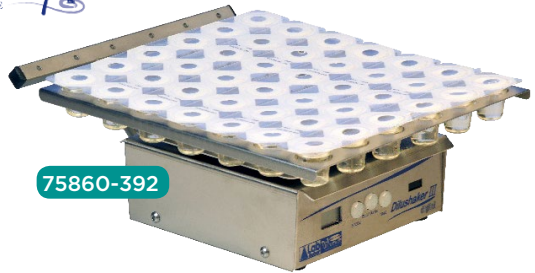
Dilushaker III

Dilucup
ELEGANCE

**Dilucup™ Elegance:
The most elegant solution
in serial dilution automation.**

This system reduces technician time, cost, and strain by automatically vortexing each diluent the same way, every time, with no spill over.

- Only 20"W X 13"D X 4.25"H
- Room temperature storage for diluents
- Reduced technician labor time and cost
- Ergonomic design
- Available in MRD (maximum recovery diluent), BPW (buffered peptone water), and NaCl diluent



75860-414

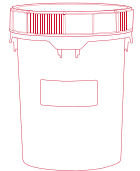


Dehydrated Culture Media



Hardy Diagnostics' dehydrated culture media, CRITERION™, is formulated to meet or exceed the highest quality standards. Choose from 250 standard formulas or request custom blending to your specifications. Innovative packaging designs and overall reliability make CRITERION™ the logical choice for culture media in your laboratory.

Visit our catalog for a full product listing!



Product	2L Mylar Zip-Bag	500gm Bottle	2kg Bucket	10kg Bucket
A-1 Medium	89406-404	89406-406	89406-408	89406-410
Brain Heart Infusion Agar	89405-128	89405-130	89405-132	89405-134
Brain Heart Infusion Broth	89405-136	89405-138	89405-140	89405-142
Brilliant Green Bile Broth	89405-216	89405-218	89405-220	89405-222
Buffered Peptone Water	89405-248	89405-250	89405-252	89405-254
Dextrose Tryptone Agar	89405-386	89405-388	89405-390	89405-392
EC Medium	89405-420	89405-422	89405-424	89405-426
EC Medium with MUG	89405-412	89405-414	89405-416	89405-418
EMB Agar, Levine	89405-428	89405-430	89405-432	89405-434
Half Fraser Broth Base	89406-642	89406-644	89406-646	89406-648
Hektoen Enteric (HE) Agar	89405-480	89405-482	89405-484	89405-486
Lactobacilli MRS Broth	89405-520	89405-522	89405-524	89405-526
Lactose Broth	89405-528	89405-530	89405-532	89405-534
Lauryl Tryptose Broth	89405-544	89405-546	89405-548	89405-550
Lauryl Tryptose Broth with MUG	89405-552	89405-554	89405-556	89405-558
Lethen Agar, Modified	89406-560	89406-562	89406-564	89406-566
Lethen Broth Modified	89406-460	89406-462	89406-464	89406-466
m Endo LES Agar	89406-332	89406-334	89406-336	89406-338
MacConkey Agar	89405-628	89405-630	89405-632	89405-634
MacConkey Agar w/Sorbitol	89405-644	89405-646	89405-648	89405-650
MacConkey Broth	89405-636	89405-638	89405-640	89405-642

Dehydrated Culture Media

Product	2L Mylar Zip-Bag	500gm Bottle	2kg Bucket	10kg Bucket
Malt Extract Agar	89405-652	89405-654	89405-656	89405-658
Mueller Hinton Agar	89405-760	89405-762	89405-764	89405-766
Mueller Hinton Broth	89406-374	89406-376	89406-378	89406-380
MYP Agar Base	89406-324	89406-3246	89406-328	89406-330
Neutralizing Buffered Peptone Water	76019-230	76019-232	76019-234	75878-366
Nutrient Agar	89405-784	89405-786	89405-788	89405-790
Orange Serum Agar	89406-364	89406-366	89406-368	89406-370
Potato Dextrose Agar (PDA)	89405-898	10033-086	89405-900	89405-902
Presence-Absence Broth	89405-904	89405-906	89405-908	89405-910
Rapp-Vass (MSRV) Med Base	89405-958	89405-960	89405-962	89405-964
Selenite Cystine Broth	89406-022	89406-024	89406-026	89406-028
Standard Methods Agar	89406-062	89406-064	89406-066	89406-068
Tryptic Soy Agar (TSA)	89406-158	89406-160	89406-162	89406-164
Tryptic Soy Broth (TSB)	89406-176	89406-178	89406-180	89406-182
Violet Red Bile Agar (VRBA)	89406-234	89406-236	89406-238	89406-240
Violet Red Bile Agar with MUG	89406-226	89406-228	89406-230	89406-232
W-L Nutrient Medium	89406-266	89406-268	89406-270	89406-272



Prepared Culture Media



Prepared Culture Media

Product	VWR Cat. No.
Bacillus Cereus Selective Agar	89407-178
Baird-Parker Agar	89407-366
Bile Esculin Agar (BEA)	89407-148
Blood Agar, 5%	89405-024
Brain Heart Infusion (BHI) Agar	89407-376
Brilliant Green Agar	89407-188, 89407-342
Brilliant Green Bile Broth	89407-400, 89407-398
Brucella Agar with H & K	89405-032
Brucella Broth	89407-404
Buffered Listeria Enrichment Broth (BLEB) Base, BAM Formulation	89407-422
Buffered Listeria Enrichment Broth (BLEB) Selective Supplement	89407-394
Buffered Peptone Water	89407-426, 89407-434, 89407-436, 89407-438
Butterfield Phosphate Buffer	89407-418, 89407-406, 89407-414, 89407-416
Campy Cefex Agar, Modified	89405-026
Campylobacter (CVA) Agar	89405-034
CIN Agar	89407-218
Columbia Blood Agar	89405-028, 89405-030
Cooked Meat Medium	89407-464
CT-SMAC for <i>E. coli</i> O157	89407-158
D/E Neutralizing Media	89407-230, 89407-472, 89407-474, 10135-902
Dichloro Rose Bengal Chloram (DRBC) Agar	75866-232, 89407-492
EC Medium	89407-496
Eosin Methylene Blue (EMB) Agar Levine	89407-238
Fraser Broth Base	89407-598, 89408-012
Fluid Thioglycollate Medium, USP	10127-492, 89407-972, 89407-552, 89407-581
Hektoen Enteric (HE) Agar	89407-338
Inhibitory Mold Agar	89407-612
KIA Medium (Kligler Iron Agar)	89407-626, 89407-628
Lactobacilli MRS Agar	89407-144
Lactose Broth	89407-646, 10135-870, 10135-908, 89407-648
Lactose Broth with Durham Tube	89407-632, 89407-640
Lauryl Tryptose Broth	89407-684, 89407-688, 89407-686

Prepared Culture Media

Product	VWR Cat. No.
Listeria Enrichment Broth, Modified	89407-744
Listeria Enrichment Broth	89407-678
LPM Agar	89407-682
Lysine Iron Agar, Modified	89407-352
MacConkey Agar	89407-268
MacConkey Agar with MUG	89407-274
Mannitol Yolk Polymyxin (MYP) Agar	89407-168
Mannitol Salt Agar	89407-278
MIO Medium Motility, Indole, Ornithine (MIO)	89407-736, 89407-738
SHIBAM Agar	76121-390
Motility Test Medium	89407-752, 89407-754
MR-VP Broth	89407-756, 89407-758
Neomycin Anaerobic Blood Agar	89405-036
Neutralizing Buffered Peptone Water	75813-986, 75838-646, 75838-644
Nitrate Broth	89407-608, 89407-770
Nutrient Agar	89407-782, 89407-784
Orange Serum Agar	89407-200
Oxford, Medium, Modified	89407-326
PALCAM Medium	89407-172
Phenol Red Broth with Dextrose	10124-528
Potato Dextrose Agar (PDA), USP	89407-826, 89407-830, 89407-832, 89407-834 89407-838
Potato Dextrose Agar with TA	89407-836
Rappaport-Vassiliadis (Broth), USP	89407-854
Rose Bengal Agar with Chloramphenicol	89407-862
SabDex (Sabouraud Dextrose) Agar	89407-890, 89407-880, 89407-906, 89407-896
SabDex Agar with Lecithin and Tween 80	89407-898, 89407-904, 89407-900, 89407-902
Selenite Cystine Broth	89407-920
SIM Medium	89407-924
Simmons Citrate Agar	89407-926
Standard Methods Agar	89407-322, 89407-324, 89407-940, 89407-938
Sterile Deionized Water	89407-948
TCBS Agar	89407-328
Tetrathionate Broth Base	89407-968, 89407-970

Prepared Culture Media



Product	VWR Cat. No.
Tetrathionate Broth with Brilliant Green	89408-136
Tomato Juice Agar	89407-146
Tryptic Soy Agar (TSA)	89407-330, 89408-020, 89407-336, 89407-290 89408-000, 89408-008, 89408-032, 89408-022 89408-016, 89408-036
Tryptic Soy Broth (TSB) Media	89408-094, 89408-046, 89407-990, 89408-084, 89408-086, 89407-986, 89407-988, 89408-110, 10159-874, 89408-122, 89408-070, 89408-126 76045-460, 10135-876, 89407-996, 10135-874 10135-882, 10135-878, 89408-044, 89408-062, 89408-076, 89408-080, 89408-102, 89408-074, 89408-100, 10145-990, 89408-052, 10127-496 10127-494
Tryptone Glucose Extract Agar	89407-142
Triple Sugar Iron (TSI) Agar	89408-130, 89408-134
Tween 80	89408-144
UVM Broth	89408-148, 89408-150
Violet Red Bile Agar	89407-346, 89408-164
Vogel and Johnson Agar	89407-208
XLD Agar, USP	89407-340
XLT4 Agar	89407-184
Yeast and Mold Agar (YM)	89407-124

Chromogenic Media

HardyCHROM™ Chromogenic Culture Media

HardyCHROM™ ECC (*E. coli* and Coliforms)

A chromogenic medium recommended for the detection, differentiation, and enumeration of *Escherichia coli* and other coliforms in food, beverage, or water samples based on colony color. *E. coli* can be identified as pink to violet-colored colonies on the plate, while coliform bacteria will appear as turquoise colonies.

15x100mm plate,

10/pk 89407-254

Contact plate, 15x100mm plate,

10/PK 89407-354

HardyCHROM™ Listeria

A chromogenic medium recommended for the selective isolation, differentiation, and enumeration of *Listeria monocytogenes* from food and environmental samples. All *Listeria* species will produce turquoise colonies. *Listeria monocytogenes* and *Listeria ivanovii* will turn turquoise and have white opaque halos.

15x100mm plate,

10/pk 89407-264

HardyCHROM™ O157

A selective and differential medium recommended for the isolation of *E. coli* O157 from food and environmental sources. Not intended for human diagnostic use. O157 provides an initial screen intended to isolate colonies for further testing. Confirm isolated purple-pink colonies with a latex agglutination test (cat. no. PL070HD), antiserum (cat. no. 295798), or other test methods for complete identification. Testing for the H7 antigen (cat. nos. 221591, 3ml or 295569, 5ml) or verotoxin testing may also be required.

15x100mm plate,

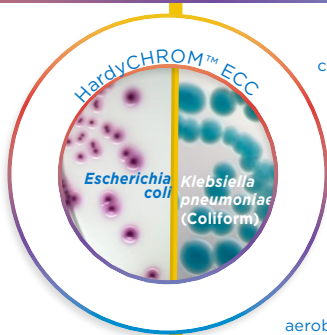
10/pk 89407-256

HardyCHROM™ Sakazakii

A chromogenic medium recommended for the selective isolation and differentiation of *Cronobacter (Enterobacter) sakazakii* from other members of the *Enterobacteriaceae* family based on colony color. *Cronobacter sakazakii* produces smooth, turquoise colonies. Other members of the *Enterobacteriaceae* family will produce white or colorless colonies with or without black centers. Most Gram-positive bacteria and yeast will be inhibited on this medium.

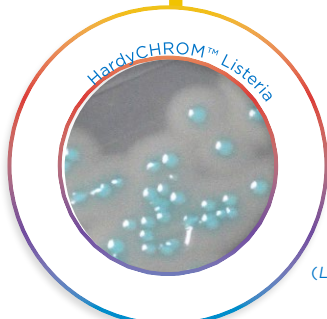
15x100mm plate,

10/pk 89407-262

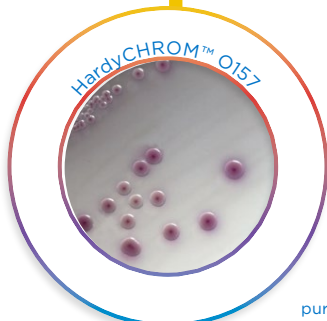


Escherichia coli (ATCC 25922) colonies growing on HardyCHROM™ ECC incubated aerobically for 24 hours at 35 °C.

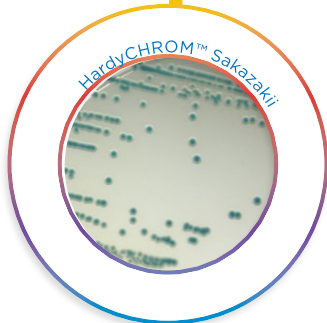
Klebsiella pneumoniae (ATCC 13883) colonies growing on HardyCHROM™ ECC incubated aerobically for 24 hours at 35 °C. Typical of all coliforms.



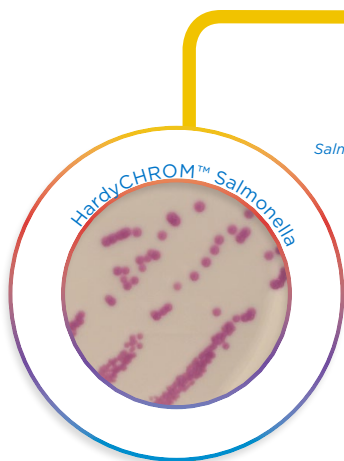
Listeria monocytogenes (ATCC 15313) colonies growing on HardyCHROM™ Listeria showing the white halo surrounding the colonies. (*Listeria ivanovii* will appear the same.)



E. coli O157 (ATCC 35150) produces smooth purple-pink to mauve colonies at 24 hours.



Cronobacter sakazakii (ATCC 29004) colonies growing on HardyCHROM™ Sakazakii incubated aerobically for 24 hours at 35 °C.



Salmonella enterica growing on HardyCHROM™ Salmonella™, 76220-924.

HardyCHROM™ Salmonella

A chromogenic medium recommended for the selective isolation and differentiation of *Salmonella* spp. from other members of the *Enterobacteriaceae* family based on colony color. Selective agents inhibit the growth of Gram-positive organisms. *Salmonella* species will produce deep magenta-colored colonies. Bacteria other than *Salmonella* spp. may produce blue or clear colonies.

15x100mm plate, 10/pk 89407-258

HardyCHROM™ Salmonella/XLT-4 Agar Biplate 15x100mm, 10/pk 76220-924

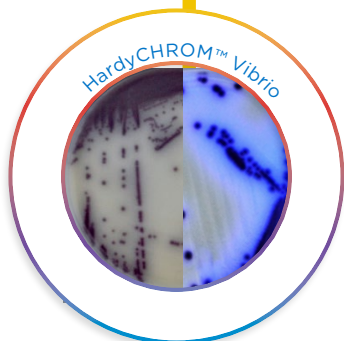


Staphylococcus saprophyticus (ATCC™ 15305) colonies incubated aerobically for 24 hours at 35 °C.

HardyCHROM™ Staph aureus

A chromogenic media for the isolation, differentiation, and reliable detection of *Staphylococcus aureus*. *Staphylococcus aureus* can be identified as smooth, pink-colored colonies on the plate. Other organisms may appear as colorless, blue, turquoise, or cream colonies, or will be inhibited. *Staphylococcus epidermidis* will be inhibited, partially to completely.

15x100mm plate, 10/pk 89407-260



Vibrio cholerae (does not fluoresce) *Vibrio vulnificus* (fluoresces)

HardyCHROM™ Vibrio

A selective and differential screening media recommended for the isolation of pathogenic *Vibrio* spp. from food and environmental sources. HardyCHROM™ Vibrio was developed as a medium for differentiating *Vibrio cholerae*, *Vibrio parahaemolyticus*, and *Vibrio vulnificus* from other *Vibrios* based on colony color. The shellfish pathogen *Vibrio parahaemolyticus* is differentiated from other *Vibrios* such as *Vibrio alginolyticus* by its teal coloration. The deadly pathogens *Vibrio cholerae* and *Vibrio vulnificus* are differentiated from other *Vibrios* by their magenta coloration, and from each other by the fluorescence of *Vibrio vulnificus* under UV light.

15x100mm plate, 10/pk 10015-560

HardyCHROM™ Vibrio, CRITERION™ Dehydrated Culture Media, 500gm wide-mouth bottle 75832-744

**Also available in Dehydrated Culture Media (Cat. nos. 75832-742, 7832-744)*

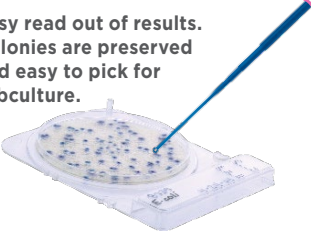
There is always a better way.

CompactDry™ is a ready to use system reducing the time needed to perform microbial colony counting on food, beverage, meat, cosmetics, and raw materials. Place 1ml of sample onto the CompactDry™ plate and incubate. Colonies grow and develop specific colors due to chromogenic substrates, providing for easy organism differentiation and counting.

Self-Diffusing Media.
1ml Sample diffuses automatically and evenly. No need for spreader!



Easy read out of results.
Colonies are preserved and easy to pick for subculture.



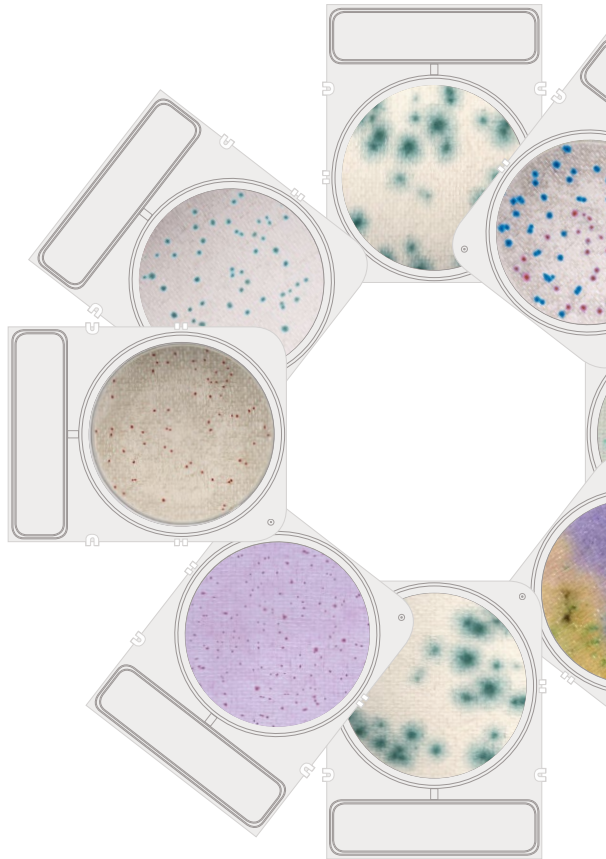
Stackable and space saving.



Easy to handle and pick up.
Rigid plastic frame with easy opening and removable lid.

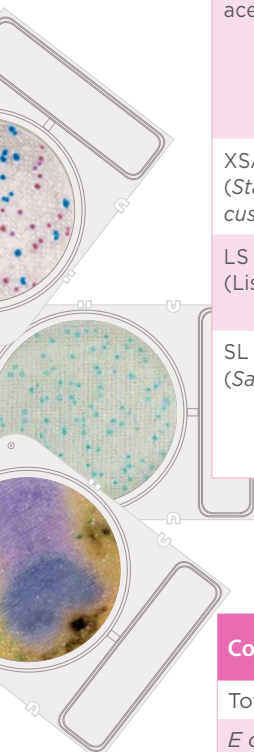


Convenient labeling area.



Room Temperature Storage

CompactDry™ Product	Description	VWR Cat. No.
TC (Total Count)	For total viable bacterial count. Colonies appear red. 100/pk	10145-968
EC (<i>E. coli</i> and Coliforms)	Contains two kinds of chromogenic substrates: Coliforms turn red. <i>E. coli</i> turns blue. 100/pk	10145-954
YM/YMR (Yeast and Mold)	Yeasts and mold can be differentiated by color. Molds form colonies with a blueish color. 100/pk	10145-972 76076-714
ETB (Enterobacteriaceae)	For the isolation and quantification of <i>Enterobacteriaceae</i> that will appear magenta in color. Genera of <i>Enterobacteriaceae</i> consists of: <i>Citrobacter</i> , <i>Enterobacter</i> , <i>Escherichia</i> , <i>Klebsiella</i> , <i>Morganella</i> , <i>Proteus</i> , <i>Salmonella</i> , <i>Serratia</i> , <i>Shigella</i> , <i>Yersinia</i> and more. 100/pk	10753-986
XSA (<i>Staphylococcus aureus</i>)	For the selective growth and differentiation of <i>Staphylococcus aureus</i> . Its growth results in blue green colonies. 100/pk	10145-970
LS (Listeria)	For the selective growth, presumptive identification, and enumeration of <i>Listeria</i> spp. 100/pk	10789-408
SL (<i>Salmonella</i>)	Determines the presumptive identification and enumeration of <i>Salmonella</i> spp. Colonies of <i>Salmonella</i> will turn green or blue-green with or without black centers due to the presence of chromogenic substances. 100/pk	10789-458



Incubation Temperature & Time

CompactDry™ Product	Incubation Temperature	Incubation Time
Total Count	35 °C	44-48 hrs.
<i>E. coli</i> & Coliforms	35 °C	20-24 hrs.
Yeast and Mold	25 °C	3-5 days
Yeast and Mold Rapid	25 °C	48 hrs.
<i>Enterobacteriaceae</i>	35-37 °C	24 hrs.
<i>Staphylococcus aureus</i>	35 °C	24 hrs.
<i>Listeria</i>	35-37 °C	24-28 hrs.
<i>Salmonella</i>	41-43 °C	20-24 hrs.



The Wizard™ CompactDry™ Reader accurately counts up to 300 colonies per plate automatically. The small footprint of the unit saves space on your lab's bench-top.

Easy-to-use: Flip the switch, select your configuration, insert your CompactDry™ plate(s), select read, and save your results!

FEATURES & BENEFITS

Wizard

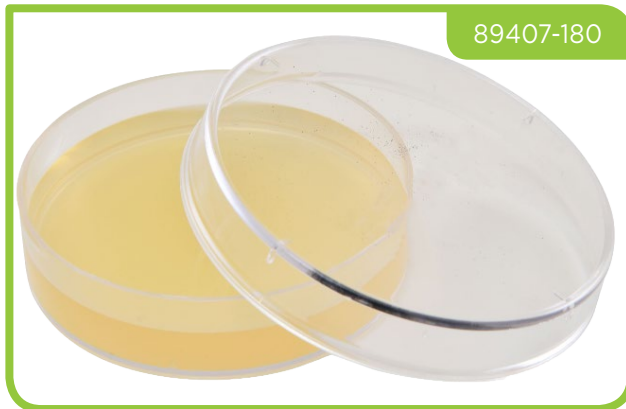
CompactDry™ plate reader

76177-196

- Automatic colony differentiation
- Reads plates in seconds
- Self-contained unit, no PC required
- Data easily exports to LIMS system
- Accurately reads up to 300 colonies per plate
- Auto-focusing 5 mega pixel scanning camera
- Color touch screen
- Save results to USB drive as CSV file or print out results
- Easily update software via USB
- USB ports for saving images, attaching printer, scanner, and wireless keyboard

Membrane Filtration

Media for Membrane Filtration	VWR Cat. No.
Barney Miller Medium	89407-368
KF <i>Streptococcus</i> Agar	89407-246
<i>Lactobacilli</i> MRS Agar	89407-214
<i>Lactobacilli</i> MRS with Cyclohexamide	89407-196
mEI Agar	89407-150
m Endo LES Agar	89407-156
m FC with 1% Rosolic Acid	89407-152
m HPC Agar	89407-694
m PA Agar	89407-160
Modified m TEC Agar	89407-136
Nutrient Agar with MUG	89407-140
Orange Serum Agar	89407-792
Potato Dextrose Agar with TA	89407-824
Pseudomonas Isolation	89407-166
R2A Agar	89407-128
Sabdex Agar with G & C	89407-180
Skim Milk Agar	89407-162
Tryptic Soy Agar Plate	89407-176
WL Differential Medium	89407-182
WL Nutrient Agar with Gentamicin and Streptomycin	89407-206
XLT-4 Agar	89407-248





89407-458

Product	VWR Cat. No.
Bacillus-ID, Identification Panel, Microgen®	10032-748
Campylobacter Latex Test	10062-766
Coagulase Plasma	89407-458, 89407-460
EcoliPRO™ O157 Latex Kit	89407-502
Listeria Identification Panel, Microgen®	10032-750, 10032-746
Legionella Latex	10032-744
Salmonella Latex	10032-742
StaphTex™ Blue (for <i>Staphylococcus aureus</i>)	89407-930, 89407-932



89407-502



89407-930

A large rectangular area with rounded corners, outlined in black, containing 20 horizontal lines for writing notes. The lines are evenly spaced and extend across the width of the page.



800 932 5000 | VWR.COM

Prices and product details are current when published and subject to change without notice. | Certain products may be limited by federal, state, provincial, or local regulations. | VWR, part of Avantor, makes no claims or warranties concerning sustainable/green products. Any claims concerning sustainable/green products are the sole claims of the manufacturer and not those of VWR International, LLC and/or Avantor, Inc. or affiliates. All prices are in US dollars unless otherwise noted. Offers valid in US, void where prohibited by law or company policy, while supplies last. | Trademarks are owned by Avantor, Inc. or its affiliates, unless otherwise noted. | Visit vwr.com to view our privacy policy, trademark owners, and additional disclaimers. © 2019 Avantor, Inc. All rights reserved.

0719 Lit. No. 081494WREV1