

TECHNICAL DATA SHEET

3 Ply Face Mask, RCTPFM, Disposable Protective Mask

Intended Use

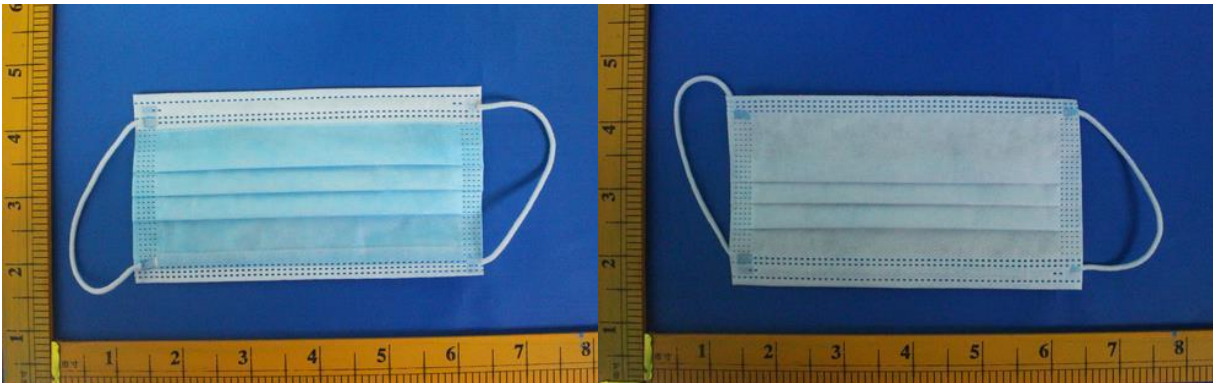
3 Ply Face Mask, Disposable Non-Woven is intended to be worn to limit the transmission of infective particles through air while maintaining smooth breathability. The highly efficient filtration media can filter or trap all the common bacteria and particle surrounding us. This is Fiber glass free and Latex free.

RCTPFM 3 Ply Face Mask, Disposable Protective Mask			
Characteristic		Results	
Filtration Efficiency		96.2%	
Total Bacterial Colonies		< 20 CFU/g	
Particle Protective Performance		71.6%	
Formaldehyde content (mg/kg)		Not detected	
pH Value		6.9	
Characteristic	Specification		
Materials	Mask Body	Outer Material	25GSM, Blue, Soft Polypropylene Non-Woven Fabric
		Middle Layer	25GSM, White, Melt Blown Filter Fabric
		Inner Material	20GSM, Soft Polypropylene Non-Woven Fabric
	Nose-Barrett	Polyethylene with Iron Wire	
	Earloop	Urethane Elastic Fiber soft	
Description	Shingle pleats rectangular face masks with a shapeable nosepiece and two ear loops present, one on each side, in order to hold mask in place.		
Earloop Style	Flat Knitted Earloop		
Dimensions	Body Size	Length : 175 mm (+/- 1cm)	
		Width : 90,5 mm (+/- 1cm)	
	Length of Earloop	(16+1) cm, elongation between 220% and 260%	
	Pleat Depth	14 mm	

TECHNICAL DATA SHEET

3 Ply Face Mask, RCTPFM, Disposable Protective Mask

Visuals



Additional Information

Storage Condition	Factory Certifications	Country of Origin
Store under cool, clean, and dry conditions. Avoid excessive heat (over 40°C or 104°F)	CE Certification and ISO9001 Qualified System	China

Features	
Outer Layer	Water-repellant, to prevent fluids from entering the mask
Middle Layer	Being high level static filtration non-woven, effectively preventing micro dust and bacteria with Bacteria Filtration Efficiency (BFE) at 96.2%, Particle protective performance at 71.6%.
Inner Layer	Soft and comfortable PP non-woven
Total Mask	Good at anti-spray

Packaging	Qty	Dimension	Weight
Primary Packaging	2000 pcs / case	52cm*39.5cm*25cm	7 kg
Secondary Packing	50 Pcs in a box/polybag	18cm*10cm*7cm	0.2 kg

TECHNICAL DATA SHEET

3 Ply Face Mask, RCTPFM, Disposable Protective Mask

Instructions

1. Take and face the outer surface of the mask.
2. While facing the outer surface of the mask away from you, place the ear loops comfortably around your ears.
3. Adjust the nose bridge to fit nicely on the bridge of your nose, conforming to the contour of your face.
4. Now holding the nose bridge in place, pull the bottom end of the mask under your chin to fully cover your mouth, your nose, as well as your chin

List of Item Codes and Attributes

Item Code / Part Number	Description	Packaging Information	Color	Specific Attributes	Treatment
RCTPFM	3 Ply Face Mask, Disposable Protective Mask; Civilian Grade Face Mask	2000 pcs / case; 50 pcs/ box/polybag	Blue outer and White Inner	Regular Earloop type	Non Sterile

Disclaimer :

This document and the information contained herein is the property of RightCare™ and may not be used or reproduced without permission. Product users should conduct all appropriate testing or other evaluations to determine the suitability of RightCare products for a particular purpose or use within a particular environment. RIGHTCARE DISCLAIMS ALL WARRANTIES OTHER THAN WHAT HAS BEEN EXPRESSLY PROVIDED.