



PRODUCT DATA SHEET

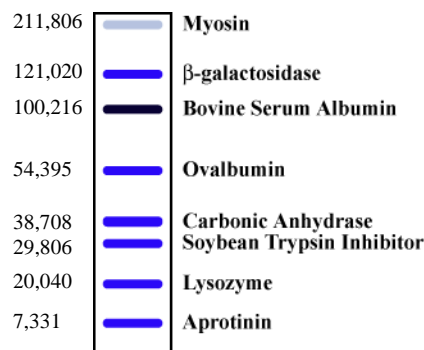
Ready-to-Screen Tissue BLOTS™ **Heart Tissue Region- Specific Blots - Single Species**

Catalog #: TB58

Lot #: -----

Components: Protein blot of Normal Human Whole Heart and Heart Region Tissue
samples arranged as follows:

Lane 1 Protein Marker*
Lane 2 Whole Heart
Lane 3 Left Atrium
Lane 4 Right Atrium
Lane 5 Left Ventricle
Lane 6 Right Ventricle



Size: 1 Blot

* Lot #: 300002325-BR

Storage Condition: 4° C

Methods Involved: The proteins were isolated from various normal human whole heart and heart region tissues by preparing a tissue homogenate in the presence of protease inhibitors. Protein samples (50µg) from each tissue were solubilized in SDS-lysis buffer and electrophoresed in a 15 well, 4-20% SDS-polyacrylamide gradient gel, followed by electroblotting on PVDF membrane.

Quality Control: Proteins isolated from each lot were run on 4-20% gel and stained with G-Biosciences *RapidStain™* to check for its quality. Actin antibody was used to test the separation and transfer of protein from each lot.

Instructions for Use: Remove the blot (membrane) from the pouch and wash with an appropriate buffer (1X TBST or PBST) 1-2 times. Block the membrane with a protein blocking agent; e.g., G-Biosciences *NAP™*-Blocker or *BLOT-QuickBlocker™*, and incubate with the primary and secondary antibodies diluted in blocking solution, following the standard protocol. Develop the blot with chemiluminescent or chromogenic detection reagents for the detection of the specific protein.

Rev 11.18.08-SA/MM/IA

