

## Datasheet for 200-901-036

## Beta Galactosidase Antibody

### Overview

<b>Description:</b>	Anti-BETA GALACTOSIDASE (E.coli) (CHICKEN) Antibody - 200-901-036
<b>Item No.:</b>	200-901-036
<b>Size:</b>	100 µg
<b>Applications:</b>	Dot Blot, WB
<b>Reactivity:</b>	Beta Galactosidase [E.coli]
<b>Host Species:</b>	Chicken

### Product Details

<b>Background:</b>	Anti Beta Galactosidase Antibody recognizes the enzyme beta galactosidase, or $\beta$ -galactosidase, that is a component of assays used frequently in genetics, molecular biology (see X-gal) for a blue white screen, and other life sciences. IPTG induces production of $\beta$ -galactosidase by binding and inhibiting the lac repressor. Since it is highly expressed and accumulated in lysosomes in senescent cells, it is used as a senescence biomarker both in vivo and in vitro in qualitative and quantitative assays, despite its limitations. Anti-beta Galactosidase Antibody is ideal for investigators involved in enzyme research.
<b>Synonyms:</b>	chicken anti-Beta Galactosidase Antibody, chicken anti-Beta Gal Antibody, Beta Galactosidase [E.coli], BGAL, beta-galactosidase, beta-gal
<b>Host Species:</b>	Chicken
<b>Clonality:</b>	Polyclonal
<b>Format:</b>	IgY

### Target Details

<b>Gene Name:</b>	lacZ
<b>Reactivity:</b>	Beta Galactosidase [E.coli]
<b>Epitope-Tag Specificity:</b>	b-GAL
<b>Immunogen Type:</b>	Native Protein

<b>Immunogen:</b>	This IgY fraction antibody was prepared from eggs of chickens laid after repeated immunizations with full length native Beta Galactosidase isolated from E.coli
<b>Purity/Specificity:</b>	This Anti-Beta Galactosidase Antibody is an IgY fraction antibody purified from monospecific chicken egg yolks by a multi-step process which includes selective precipitation and salt fractionation followed by extensive dialysis against the buffer stated above. Assay by immunoelectrophoresis resulted in a single precipitin arc against purified and partially purified Beta Galactosidase [E.coli] and anti-Chicken Serum. Cross reactivity against Beta Galactosidase from other tissues and species may occur but have not been specifically determined. Very low background staining has been reported in various assays.
<b>Relevant Links:</b>	<ul style="list-style-type: none"><li>• <a href="#">NCBI - NP_414878.1</a></li><li>• <a href="#">UniProtKB - P00722</a></li></ul>

## Application Details

<b>Tested Applications:</b>	Dot Blot, WB
<b>Application Note:</b>	Anti-Beta-Gal (CHICKEN) Antibody has been tested for use in ELISA and immunoblotting. Although not tested, this antibody may also be useful for neutralization assays, immunohistochemistry, flow Cytometry, immunoprecipitation, immunodiffusion, conjugation and most immunological methods requiring high titer and specificity.
<b>Assay Dilutions:</b>	All assays should be optimized by the user. Recommended dilutions (if any) may be listed below.
<b>ELISA:</b>	1:2,000 - 1:10,000
<b>WB:</b>	1:2,000-1:10,000

## Formulation

<b>Physical State:</b>	Liquid (sterile filtered)
<b>Concentration:</b>	1 mg/ml by UV absorbance at 280 nm
<b>Buffer:</b>	0.02 M Potassium Phosphate, 0.15 M Sodium Chloride, pH 7.2
<b>Preservative:</b>	0.01% (w/v) Sodium Azide
<b>Stabilizer:</b>	None

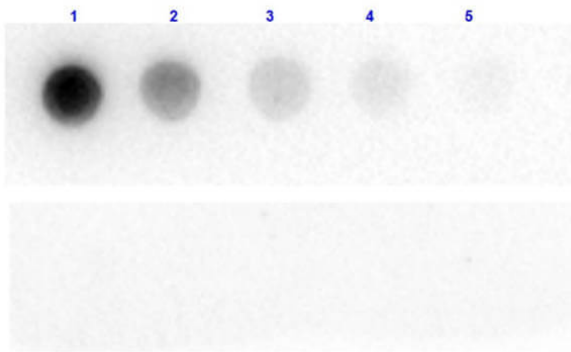
## Shipping & Handling

<b>Shipping Condition:</b>	Dry Ice
----------------------------	---------

**Storage Condition:** Store vial at -20° C prior to opening. Aliquot contents and freeze at -20° C or below for extended storage. Avoid cycles of freezing and thawing. Centrifuge product if not completely clear after standing at room temperature. This product is stable for several weeks at 4° C as an undiluted liquid. Dilute only prior to immediate use.

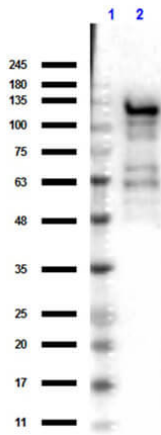
**Expiration:** Expiration date is one (1) year from date of receipt.

## Images



### Dot Blot

Dot Blot of Chicken Anti-Beta Galactosidase Antibody. Dilutions of Beta Gal: (1) 100ng, (2) 33.3ng, (3) 11.1ng, (4) 3.7ng, and (5) 1.23ng. Top Blot incubated with Primary Antibody: 1µg/mL of Anti-Beta Galactosidase for 1 hour at room temp. Bottom Blot incubated with Secondary Only: Goat anti-Chicken Peroxidase conjugated (p/n 603-103-126) 1:40,000 for 30 min at room temp. Blocking Buffer: BlockOut Universal Blocker (p/n MB-073). Exposure 1 sec.



### Western Blot

Western Blot results of Chicken Anti-Beta Galactosidase Antibody. Lane 1: Opal Prestained Molecular Weight Ladder (p/n MB-210-0500). Lane 2: Beta Galactosidase. Load: 50ng. Primary Antibody: Rabbit Anti-Beta Galactosidase at 1µg/mL overnight at 4°C. Secondary Antibody: Goat anti-Chicken HRP (p/n 603-103-126) at 1:40,000 for 30min at RT. Blocking: BlockOut (p/n MB-073) for 30 min at RT.

## Disclaimer

This product is for research use only and is not intended for therapeutic or diagnostic applications. Please contact a technical service representative for more information. All products of animal origin manufactured by Rockland Immunochemicals are derived from starting materials of North American origin. Collection was performed in United States Department of Agriculture (USDA) inspected facilities and all materials have been inspected and certified to be free of disease and suitable for exportation. All properties listed are typical characteristics and are not specifications. All suggestions and data are offered in good faith but without guarantee as conditions and methods of use of our products are beyond our control. All claims must be made within 30 days following the date of delivery. The prospective user must determine the suitability of our materials before adopting them on a commercial scale. Suggested uses of our products are not recommendations to use our products in violation of any patent or as a license under any patent of Rockland Immunochemicals, Inc. If you require a commercial license to use this material and do not have one, then return this material, unopened to: Rockland Inc., P.O. BOX 5199, Limerick, Pennsylvania, USA.