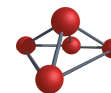




## **ABSOLUTE STANDARDS, INC.**



PO Box 5585 • Hamden, CT • 06518  
Voice: (203) 281-2917 • Fax: (203) 281-2922  
CustomerServ@AbsoluteStandards.com

---

To Whom It May Concern:

The attached documents comprise the safety information for the product in question.

One document is the SDS for the solvent of the standard. This SDS incorporates the ingredients in the standard by reference to the Certified Weight Report, also attached.

Combined these two documents comprise the SDS information for the product.

Please contact me directly if further assistance/information is required.

Regards,

---

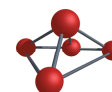
Jack Criscio, President

Absolute Standards Inc  
jack@absolutestandards.com



ISO Guide 17025 Accredited • ISO 9001:2008 Registered

Page 1 of 1





**CERTIFIED WEIGHT REPORT**

**Part Number:** 71855      **Solvent(s):** 51182    Methanol  
**Lot Number:** 073012  
**Description:** 1,3-Dimethylnaphthalene  
**Expiration Date:** 073017  
**Nominal Concentration (µg/mL):** 1000

**Lot #**

**Storage:** 4 °C

5E-05 Balance Uncertainty

**Weight(s) shown below were combined and diluted to (mL):** 25.0    0.011 Flask Uncertainty

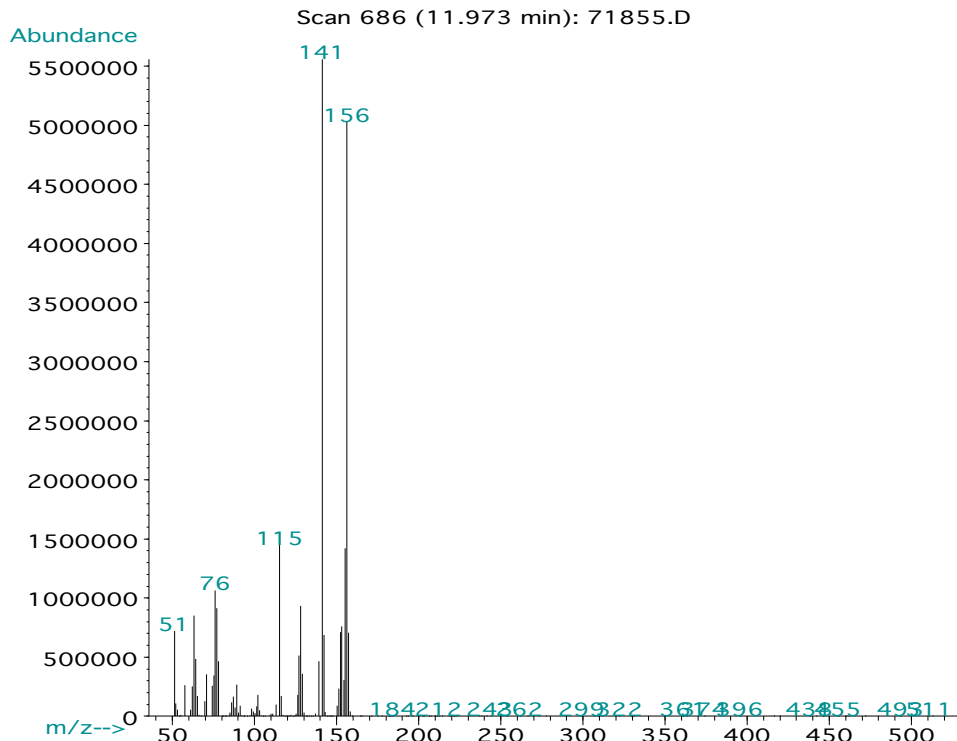
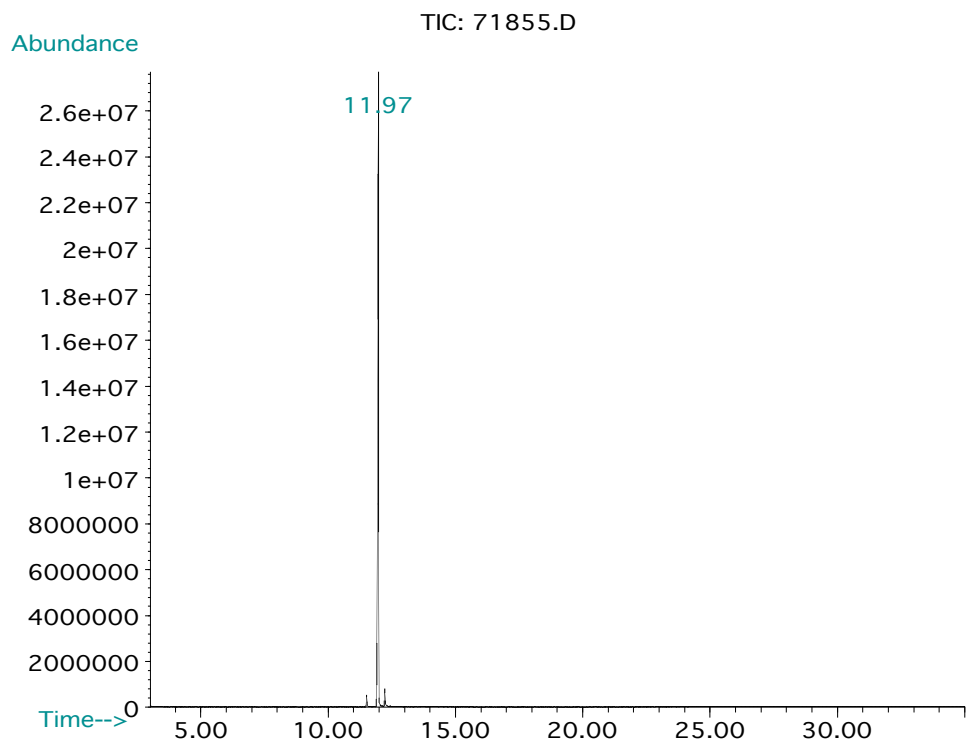
<i>Gabriel Helland</i>		073012
<b>Formulated By:</b>	Gabriel Helland	<b>DATE</b>
<i>Pedro L. Rentas</i>		073012
<b>Reviewed By:</b>	Pedro L. Rentas	<b>DATE</b>

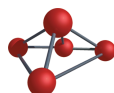
**MSDS Information**

(Solvent Safety Info. On Attached pg.)

Compound	RM#	Lot Number	Nominal Conc (µg/mL)	Purity (%)	Uncertainty %	Target Weight(g)	Actual Weight(g)	Actual Conc (µg/mL)	Expanded Uncertainty	CAS#	OSHA PEL (TWA)	LD50
1. 1,3-Dimethylnaphthalene	1855	25811BU	1000	96	0.2	0.02604	0.02614	1003.8	0.0057	00575-41-7	N/A	N/A

**Method GC8MSD-3.M:** Column:SPB-5 (30m X 0.25mm ID X 0.25µm film thickness) Temp 1 = 50°C (1min.), Temp 2 = 300°C (9min.), Rate = 10°C/min., Injector B= 200°C, Detector B = 275°C, Split Ratio = 100:1, Scan Rate = 2. Analysis performed by: Gina McLane.



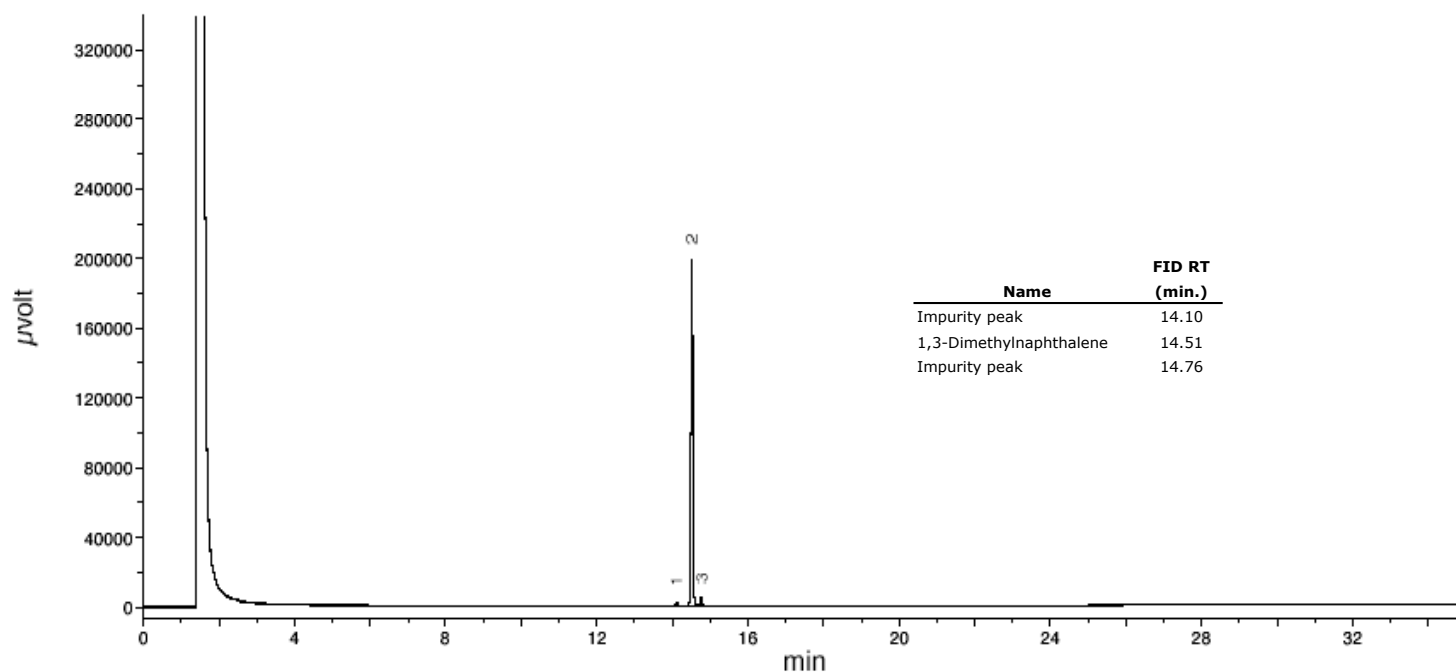


**Run 18, "P71855 L073012 [1000µg/mL in MeOH]"**

Run Length: 35.00 min, 20998 points at 10 points/second.  
Created: Tue, Jul 31, 2012 at 10:45:57 PM.  
Sampled: Sequence "073112-GC4M1", Method "GC4-M1".  
Analyzed using Method "GC4-M1".

**Comments**

GC4-M1 Analysis by Candice Warren  
Column ID SPB-5 30 meter x 0.53mm x 1.5um Film Thickness  
Flow rates; Total Flow = 300 ml/min, Helium (carrier) = 6.5 mL, Helium (make-up) = 25 mL, Hydrogen (detector) = 30 mL, Air (detector) = 360 mL  
Oven Temp 1 = 50°C (1 min), Rate = 10°C/min, Oven Temp 2 = 300°C (9 min), Total Run Time = 35 Minutes.  
Injector Temp = 200°C, FID Temp = 300°C, FID Signal = eDaq Channel 1.  
Gas Chromatograph = HP 5890, Auto Sampler = HP 7673, Standard Injection = 0.5 uL, Range = 4



**Safety Data Sheet (SDS)** GHS/OSHA Compliant**Section I Product and Company Identification****IDENTITY ANALYTICAL STANDARD DISSOLVED IN METHANOL**

Manufacturer's Name	ABSOLUTE STANDARDS INC	Emergency Telephone USA & CANADA	<b>1-800-535-5053</b>
Address	44 Rossotto Dr. Hamden CT, 06514	Emergency Telephone International	<b>1-352-323-3500</b>
		Date Prepared/Revised	May 1, 2015

**Section II - Hazards Identification****GHS Classification in accordance with 29 CFR 1910 (OSHA HCS)**

<b>H225</b>	<b>Highly Flammable Liquid and Vapor</b>	<b>H301, 311, 331</b>	<b>Toxic if swallowed, skin contact, inhaled</b>
<b>H370</b>	<b>Cause damage to organs</b>	<b>H351</b>	<b>Suspected of causing cancer</b>
<b>P271</b>	<b>Use in ventilated area</b>	<b>P280</b>	<b>Use gloves, eye protection/face shield</b>
<b>P302,332</b>	<b>If on skin, wash with soap and water</b>	<b>P305,351,338</b>	<b>If in eyes, remove contacts, rinse with water</b>

**Signal Word: DANGER****Section III - Composition**

Components (Specific Chemical Identity; Common Name(s))			% (optional)
Methanol	METHYL ALCOHOL	CAS#: 67-56-1	> 97

**See Certified Weight Report For Other Analytes Present At Trace Quantities.****INTENDED USE: REFERENCE MATERIAL****Section IV. FIRST AID MEASURES**

<b>General advice</b>	Consult a physician. Show this safety data sheet to the doctor in attendance. Move to safe area.
<b>If inhaled</b>	If inhaled, move person into fresh air. If not breathing, give artificial respiration. Consult a physician.
<b>In case of skin contact</b>	Wash with soap and water. Consult a physician.
<b>In case of eye contact</b>	Rinse thoroughly with plenty of water for at least 15 minutes and consult a physician.
<b>If swallowed</b>	Do NOT induce vomiting. Rinse mouth with water. Consult a physician.

**Section V. FIREFIGHTING MEASURES**

<b>Flammability</b>	Flammable in the presence of a source of ignition when the temperature is above the flash point. Keep away from heat/sparks/open flame/hot surface. No smoking.
<b>Suitable extinguishing media</b>	Use water spray, alcohol-resistant foam, dry chemical or carbon dioxide.
<b>Protective equipment for fire</b>	Wear self contained breathing apparatus for fire fighting if necessary.

**Section VI. ACCIDENTAL RELEASE MEASURES**

Personal precautions	Wear respiratory protection. Avoid breathing vapors, mist or gas. Ensure adequate ventilation. Remove all sources of ignition. Vapours accumulate to form explosive concentrations.
Environmental precautions	Prevent further leakage or spillage if safe to do so. Do not let product enter drains.
Clean up	Contain spillage, and then collect and place in container for disposal according to local regulations (see section 13).

**Section VII. HANDLING AND STORAGE**

Precautions for safe handling	Avoid contact with skin and eyes. Avoid inhalation of vapour or mist. Use ventilation Keep away from sources of ignition. No smoking. Prevent the build up of electrostatic charge.
Storage Conditions	Keep container tightly closed in a dry and well-ventilated place. Containers which are opened must be carefully resealed and kept upright to prevent leakage.

**Section VIII. EXPOSURE CONTROLS/PERSONAL PROTECTION**

Methanol	67-56-1 TWA 200 ppm
Skin notation	TWA 200 ppm
Potential for skin absorption, ingestion and inhalation.	
Personal protective equipment	Respiratory protection Handle with gloves. Gloves must be inspected prior to use. Eye protection.
Avoid contact with skin, eyes and clothing. Wash hands thoroughly after handling the product.	

**Section IX - Physical/Chemical Characteristics**

Boiling Point	Specific Gravity (H <sub>2</sub> O = 1)
---------------	---

Vapor Pressure (mm Hg)	65°C	Melting Point	0.79
Vapor Density (AIR = 1)	96	Evaporation rate (Butyl Acetate = 1)	-98°C
Solubility in Water	1.11		4.6
Appearance and Odor	COMPLETE CLEAR, COLORLESS LIQUID WITH CHARACTERISTIC PUNGENT ODOR.		

**Section X. STABILITY AND REACTIVITY**

Chemical stability	Stable under recommended storage conditions.
Possibility of hazardous reactions	Vapours may form explosive mixture with air.
Conditions to avoid	Heat, flames, sparks, extreme temperature and sunlight.
Materials to avoid	Acid chlorides, Acid anhydrides, Oxidizing agents, Alkali metals, Reducing agents, Acids
Hazardous decomposition products formed under fire conditions.	- Carbon oxides

**Section XI. TOXICOLOGICAL INFORMATION**

LD50 Oral - rat - 5,628 mg/kg  
 LC50 Inhalation - rat - 4 h - 64000 ppm  
 LD50 Dermal - rabbit - 15,800 mg/kg  
 Toxic if absorbed through skin. Causes skin irritation.  
 Eye damage/eye irritation  
 Toxic if inhaled. Causes respiratory tract irritation.  
 Toxic if swallowed.

**Section XII. ECOLOGICAL INFORMATION FOR REPORTABLE QUANTITY OF 5000 lbs.**

LC50 15,400 mg/l - 96 h  
 EC50 24,500.00 mg/l - 48 h  
 EC100 10,000.00 mg/l - 24 h

**Section XIII. DISPOSAL CONSIDERATIONS**

Dispose with normal Laboratory Solvent Waste.

**Section XIV. TRANSPORT INFORMATION**

DOT (US)	IATA
UN number: 1230 Class: 3 Packing group: II	UN number: 1230 Class: 3 (6.1) Packing group: II
Proper shipping name: Methanol	Proper shipping name: Methanol
Reportable Quantity (RQ): 5000 lbs	

**Section XV. REGULATORY INFORMATION**

OSHA Hazards Flammable liquid, Target Organ Effect, Toxic by inhalation., Toxic by ingestion, Toxic by skin absorption, Irritant  
 SARA 302: No chemicals in this material are subject to the reporting requirements of SARA Title III, Section 302.

**Section XVI. Misc. INFORMATION**

The information in this Material Safety Data Sheet meets the requirements of the United States Occupational Safety and Health Act and regulations promulgated thereunder (29 CFR 1910.1200 et. seq.) and Global Harmonized System (GHS). This document is intended only as a guide to the appropriate precautionary handling of the material by trained personnel, or supervised by a person trained in chemical handling. The user is responsible for determining the precautions and dangers of this chemical for his or her particular application. Depending on usage, protective clothing including eye and face guards and respirators must be used to avoid contact with material or breathing chemical vapors/fumes. Exposure to this product may have serious adverse health effects. This chemical may interact with other substances. Since the potential uses are so varied, ABSOLUTE STANDARDS INC. cannot warn of all the potential dangers of use or interaction with other chemicals or substances. ABSOLUTE STANDARDS INC. warrants that the chemical meets the specifications set forth on the label. ABSOLUTE STANDARDS INC DISCLAIMS ANY OTHER WARRANTIES, EXPRESSED OR IMPLIED WITH REGARD TO THE PRODUCT SUPPLIED HEREUNDER, ITS MERCHANTABILITY OR ITS FITNESS FOR A PARTICULAR APPLICATION. The user should recognize that this product can cause severe injury or death, especially if improperly handled or the known dangers of use are not heeded. READ ALL PRECAUTIONARY INFORMATION. As new documented general safety information becomes available, Absolute Standards Inc. will periodically revise this Safety Data Sheet. If you have any questions, please call Technical Service at 1-203-281-2917 for assistance.