



**White Knight**  
Engineered Products

9525 Monroe Road  
Suite 100  
Charlotte NC 28270

Phone: 704.542.6876 Fax: 704.910.8065 customerservice@wkep.com

## Product Specification

**Style Number: 12 L4 4883 82PC 3P**

Revision: B

PO # \_\_\_\_\_

Release Date: 02.21.17

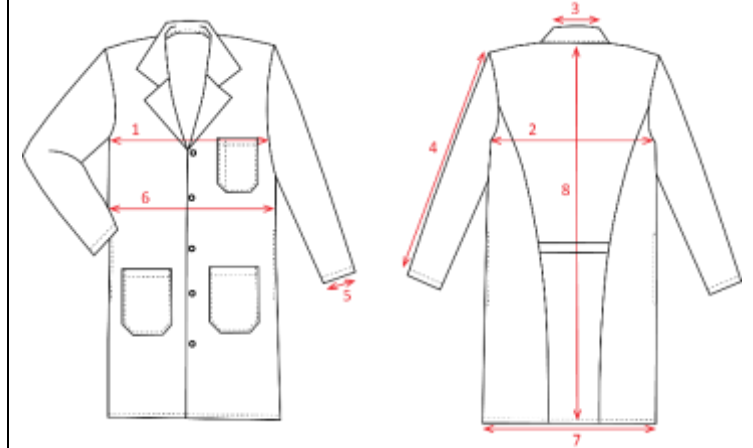
Inspected by \_\_\_\_\_

### General Description

Garment Type	Labcoat
Collar	Lapel
Sleeves	Set- In
Sleeve Opening	Plain Hem
Front Enclosure	Buttons
Fabric	80% Poly / 20% Cotton
Thread	100% Poly
Seams	Overcast

### Construction Details

- 2 Outside Waist Pockets 7" W x 7" D
- Left breast Pocket 5 1/2" W X 5 1/2" D with 1" Pencil Slot
- Pockets Start & Finish will be Bar-tacked
- Hemmed Sleeves
- Front Closure is by means of 5 Buttons. First Button Placed 8" Below Collar Seam, all remaining will be Placed 5" Apart
- Side Vent Openings
- Lapel Collar will be single needle set and stitched down
- Single needle hemmed Bottom finishing 3/4" wide with a 1/4" turn under
- Women's Garment Closure will be Right over Left
- Princess-Seamed Back with One Piece Belt
- For Details on Label and Placement Refer to Config Specification



### Finished Measurements

Ref	Feature	XXS	XS	S	M	L	XL	2XL	3XL	4XL	5XL	Actual
1	Chest	38	40	42	46	50	54	58	62	66	70	
2	Across back	18 3/4	19 3/4	20 3/4	23	25 1/2	26 1/2	29	30 3/4	33	36	
3	Collar	12 1/2	12 1/2	12 1/2	13 3/4	13 1/2	14	14	14 1/4	14 1/2	15	
4	Sleeve Outseam	23 3/4	23 3/4	24 3/4	24 3/4	25	25	25	25 3/4	26	26 3/4	
5	Sleeve Opening	10	10	10	12	12 1/2	13 1/2	14	15	15 1/2	16	
6	Waist	39	41	43	47	51	55	59	64	68	72	
7	Sweep	43	46	49	52	55	61	65	71	75	79	
8	Length	34	35	36	37	39	39	39	39	39	39	

#### Tolerance

<12 inches	+ / 1/2 Inch
>12 inches	+ / 1 Inch