



# THE NEXT GENERATION CARBOY

Ergonomic Design  
Versatile Cap  
Versatile Barb  
Spigot Technology

A row of various VWR carboy components is shown at the bottom of the page. From left to right, there is a white cap with a yellow ring, a grey cap with two grey barbs, a grey cap with two grey barbs, a grey cap with two grey barbs, a grey cap with two grey barbs, a grey cap with two grey barbs, a grey cap with two grey barbs, a grey cap with two grey barbs, and a blue spigot. The components are arranged on a reflective surface.

Advanced fluid handling systems  
developed with the end-user in mind.



Carboy body features advanced ergonomic design

• = Handles



Wide-mouth version for easy filling and cleaning



Versatile Cap technology provides the flexibility of interchangeable connectors



Versatile Barb technology provides interchangeable spigot options

## MATERIALS

- Translucent HDPE
- Polypropylene
- Amber HDPE
- Copolyester



## VWR<sup>®</sup> Carboy

VWR's Carboy is an advanced fluid handling system developed with the end-user in mind. The ergonomically designed carboy body is coupled with our VWR versatile cap technology to provide the user an easy-to-use and easy-to-clean carboy.

The carboy's body includes design features that allow the user to easily hold and manipulate during lifting, filling, and pouring. Features include grips at the bottom, easy-to-read identification marks, and a set of pinched handles at the top that prevent the possibility of fluid trapping voids.

The VWR carboy offers a wide-mouth version for easier filling and cleaning. This is available for both the 20L and 40L carboys.

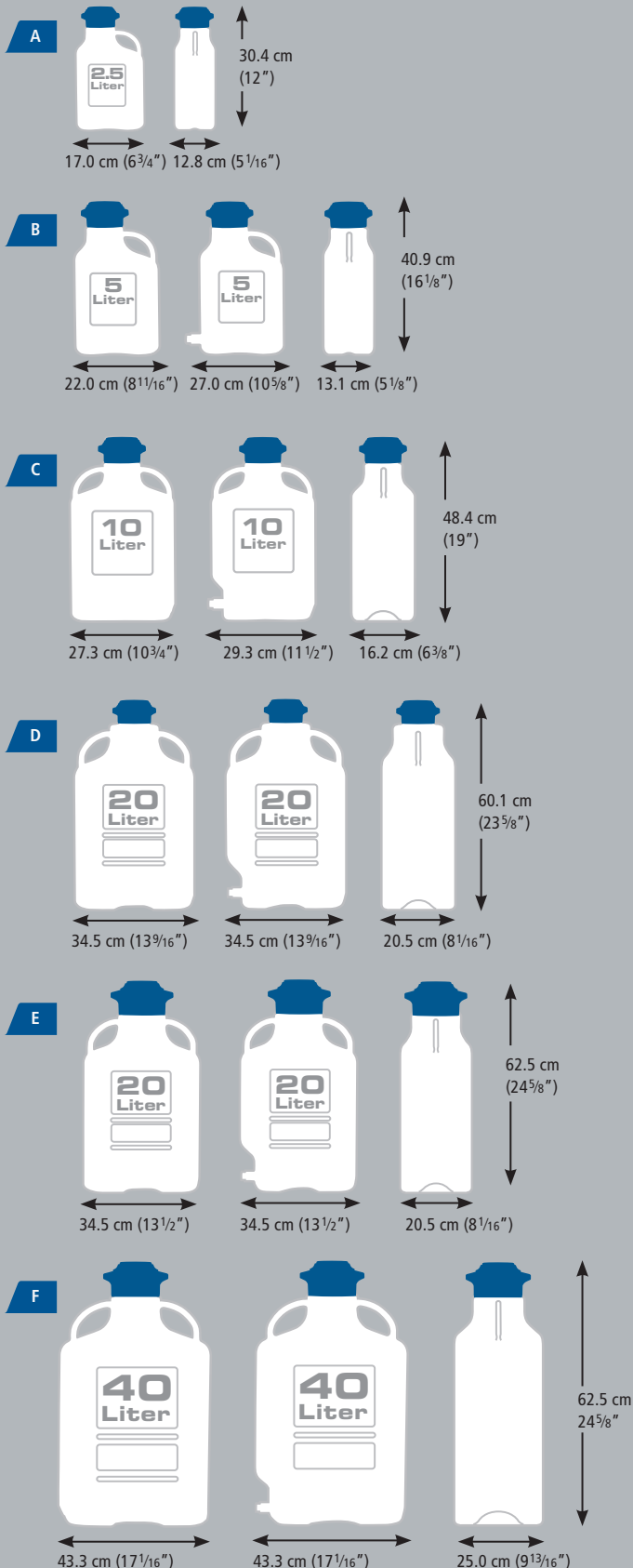
The VWR versatile cap technology provides the ultimate in connection flexibility. The leak-proof cap adapters enable users to quickly change the top connectors of each carboy to match application needs. Versatile cap adapters are available in a variety of configurations (see versatile cap data page).





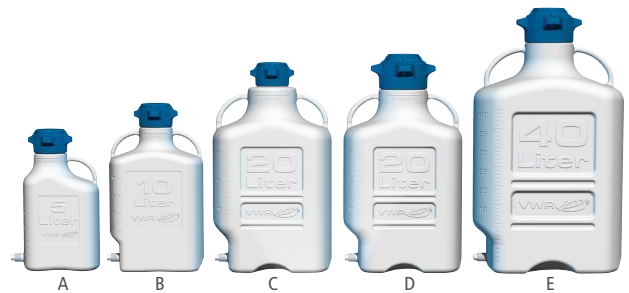
- 1** Novel shape maximizes bench and shelf space
- 2** Bottom handles provide a secure grip while lifting and transporting
- 3** Large top handles for a full hand grip
- 4** Molded carboy size identification
- 5** Large, clear graduation marks with  $\pm 5\%$  accuracy
- 6** No leak, autoclavable spigot and no leak, autoclavable versatile barbs
- 7** Cap technology with adapters and replaceable gasket\*
- 8** Carboy body design allows for maximum solution recovery
- 9** Wide-mouth version for easy filling and easy cleaning
- 10** All carboys ship with closed caps (excludes sanitary carboys)

\*Adapters require the purchase of an open cap



### HDPE Carboys

	Graduated Capacity, L (gal.)	Max. Capacity, L (gal.)	Cap Size	Cat. No.
A	2.5 (0.66)	3.2 (0.85)	80	89199-164
B	5 (1.3)	7 (1.8)	80	89170-762
C	10 (2.6)	13 (3.4)	80	89170-766
D	20 (5.2)	27 (7.1)	80	89170-770
E	20 (5.2)	27 (7.1)	120	89170-772
F	40 (10.6)	52 (13.7)	120	89170-778



### HDPE Carboys with Spigots

	Graduated Capacity, L (gal.)	Max. Capacity, L (gal.)	Cap Size	Cat. No.
A	5 (1.3)	7 (1.8)	80	89170-764
B	10 (2.6)	13 (3.4)	80	89170-768
C	20 (5.2)	26 (6.8)	80	89170-774
D	20 (5.2)	26 (6.8)	120	89170-776
E	40 (10.6)	51 (13.5)	120	89170-780



### Amber HDPE Carboys

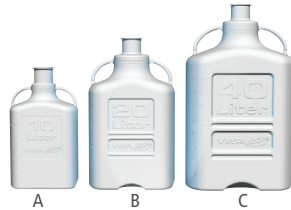
	Graduated Capacity, L (gal.)	Max. Capacity, L (gal.)	Cap Size	Cat. No.
A	2.5 (0.66)	3.2 (0.85)	80	89199-152
B	5 (1.3)	7 (1.8)	80	89199-154
C	10 (2.6)	13 (3.4)	80	89199-156
D	20 (5.2)	26 (6.8)	120	89199-160
E	40 (10.6)	51 (13.5)	120	89199-162



### Polypropylene Carboys

	Graduated Capacity, L (gal.)	Max. Capacity, L (gal.)	Cap Size	Cat. No.
A	2.5 (0.66)	3.2 (0.85)	80	89199-166
B	5 (1.3)	7 (1.8)	80	89170-782
C	10 (2.6)	13 (3.4)	80	89170-786
D	20 (5.2)	27 (7.1)	80	89170-792
E	20 (5.2)	27 (7.1)	120	89170-794
F	40 (10.6)	52 (13.7)	120	89170-802

### Polypropylene Carboys with 7.6cm (3") Sanitary Spout



	Graduated Capacity, L (gal.)	Max. Capacity, L (gal.)	Cap Size	Cat. No.
A	10 (2.6)	13 (3.4)	—	89170-788
B	20 (5.2)	27 (7.1)	—	89170-796
C	40 (10.6)	52 (13.7)	—	89170-804



### Polypropylene Carboys with Spigots

	Graduated Capacity, L (gal.)	Max. Capacity, L (gal.)	Cap Size	Cat. No.
A	5 (1.3)	7 (1.8)	80	89170-784
B	10 (2.6)	13 (3.4)	80	89170-790
C	20 (5.2)	26 (6.8)	80	89170-798
D	20 (5.2)	26 (6.8)	120	89170-800
E	40 (10.6)	51 (13.5)	120	89170-806



### Copolyester Carboys

	Graduated Capacity, L (gal.)	Max. Capacity, L (gal.)	Cap Size	Cat. No.
A	2.5 (0.66)	3.2 (0.85)	80	89199-168
B	5 (1.3)	7 (1.8)	80	89170-808
C	10 (2.6)	13 (3.4)	80	89170-812
D	20 (5.2)	26 (6.8)	120	89170-818

# VWR® Versatile Cap,

VWR has expanded the features of our carboy series with the new versatile cap, versatile barb, and spigot technology.

#### Versatile Cap

- Leakproof cap adapter works with open cap (sold separately) to enable users to quickly change top-connector to match application needs
- Large finger grips for easy tightening and opening of the cap
- Available in industry standard 80mm and wide-mouth 120mm (120mm fits exclusively with VWR's wide-mouth 20L and 40L carboys).
- Quick-connect options available with 2, 3, and 4 ports, all with industry-standard 6.4mm (¼") and 9.5mm (⅜") hose barbs [6.4mm (¼") and 12.76mm (½") molded hose barbs are available]
- Made from autoclavable polypropylene

#### Versatile Barb

- Supports flexibility in drainage or connection to a pump, automated equipment, or filling bell
- Available in 6.4mm (¼"), 9.5mm (⅜"), 12.7mm (½"), and 19.1mm (¾") hose barb sizes. A sanitary 19.1mm (¾") fitting is also available
- Enables carboy to function as a supply reservoir to a larger system
- Made from autoclavable polypropylene

#### Spigot Technology

- Large, comfortable lever controls two flow rates, including continuous flow
- Designed to fit a hose connection
- Standard internal Luer taper fits a male barb adapter
- Positive hard stop prevents over-tightening, which can damage the seal
- Made from autoclavable polypropylene

# Versatile Barb, and Spigot Technology

- Versatile cap technology provides the flexibility of interchangeable top-connectors
- Versatile cap is offered in industry standard size and also wide-mouth size to fit exclusively on our wide-mouth carboy
- Quick release latches for easy port change
- Leak-proof cap with replaceable gasket
- Versatile cap is stackable
- Available in a variety of configurations
- Versatile cap, versatile barb, and spigot are autoclavable
- Versatile barb offers a convenient solution for bottom-connections and are available in  $\frac{1}{4}$ " ,  $\frac{3}{8}$ " ,  $\frac{1}{2}$ " , and  $\frac{3}{4}$ " hose barb sizes
- Spigot controls two flow rates

ISO 9001  
ISO 13485

- 1 Quick-connect for easy top connections
- 2 Many adapter options provide versatile top connections
- 3 Replaceable gasket
- 4 Versatile barb allows for flexible bottom connections
- 5 Spigot technology with two flow rates
- 6 Versatile cap technology with large handle grips for easy tightening and loosening



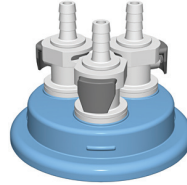
# VWR<sup>®</sup> Versatile Cap Technology: The Ultimate

## Versatile Cap, 80mm



**Cap, Closed**

Cap Size	Hose Barb Size	No. of Quick Connects	Cat. No.	Pack of
80	—	—	89170-828	2



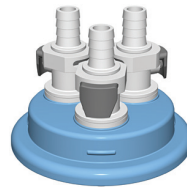
**Adapter, 1/4" HB x 3**

Cap Size	Hose Barb Size	No. of Quick Connects	Cat. No.	Pack of
80	1/4"	3	89170-846	1



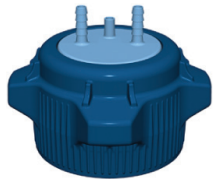
**Cap, Open with Closed Adapter**

Cap Size	Hose Barb Size	No. of Quick Connects	Cat. No.	Pack of
80	—	—	89170-830	2



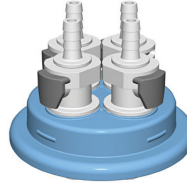
**Adapter, 3/8" HB x 3**

Cap Size	Hose Barb Size	No. of Quick Connects	Cat. No.	Pack of
80	3/8"	3	89170-848	1



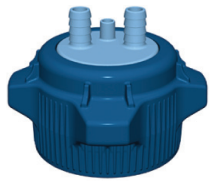
**Cap, Open Top with Adapter, 1/4" HB x 2 and Vent**

Cap Size	Hose Barb Size	No. of Quick Connects	Cat. No.	Pack of
80	1/4"	—	89170-832	1



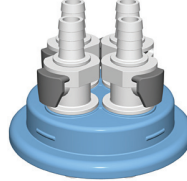
**Adapter, 1/4" HB x 4**

Cap Size	Hose Barb Size	No. of Quick Connects	Cat. No.	Pack of
80	1/4"	4	89170-850	1



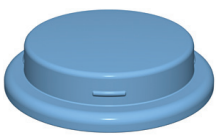
**Cap, Open Top with Adapter, 1/2" HB x 2 and Vent**

Cap Size	Hose Barb Size	No. of Quick Connects	Cat. No.	Pack of
80	1/2"	—	89170-834	1



**Adapter, 3/8" HB x 4**

Cap Size	Hose Barb Size	No. of Quick Connects	Cat. No.	Pack of
80	3/8"	4	89170-852	1



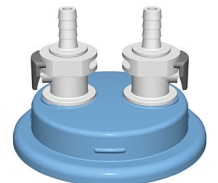
**Adapter, Closed**

Cap Size	Hose Barb Size	No. of Quick Connects	Cat. No.	Pack of
80	—	—	89170-840	1



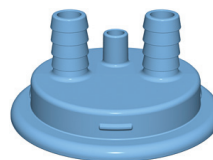
**Adapter, 1/4" HB x 2 and Vent**

Cap Size	Hose Barb Size	No. of Quick Connects	Cat. No.	Pack of
80	1/4"	—	89170-870	1



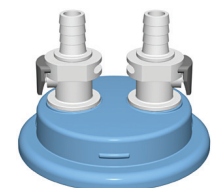
**Adapter, 1/4" HB x 2**

Cap Size	Hose Barb Size	No. of Quick Connects	Cat. No.	Pack of
80	1/4"	2	89170-842	1



**Adapter, 1/2" HB x 2 and Vent**

Cap Size	Hose Barb Size	No. of Quick Connects	Cat. No.	Pack of
80	1/4"	—	89170-872	1



**Adapter, 3/8" HB x 2**

Cap Size	Hose Barb Size	No. of Quick Connects	Cat. No.	Pack of
80	3/8"	2	89170-844	1



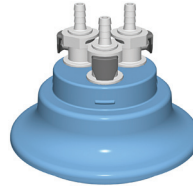
# in Top-Connection Flexibility

## Versatile Cap, 120mm



**Cap, Closed**

Cap Size	Hose Barb Size	No. of Quick Connects	Cat. No.	Pack of
120	—	—	89170-836	2



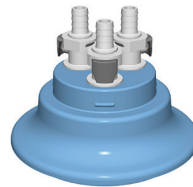
**Adapter, 1/4" HB x 3**

Cap Size	Hose Barb Size	No. of Quick Connects	Cat. No.	Pack of
120	1/4"	3	89170-860	1



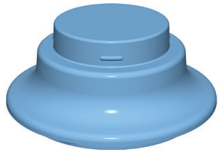
**Cap, Open with Closed Adapter**

Cap Size	Hose Barb Size	No. of Quick Connects	Cat. No.	Pack of
120	—	—	89170-838	2



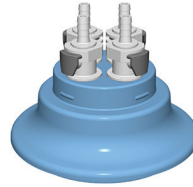
**Adapter, 3/8" HB x 3**

Cap Size	Hose Barb Size	No. of Quick Connects	Cat. No.	Pack of
120	3/8"	3	89170-862	1



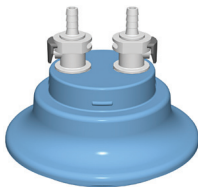
**Adapter, Closed**

Cap Size	Hose Barb Size	No. of Quick Connects	Cat. No.	Pack of
120	—	—	89170-854	2



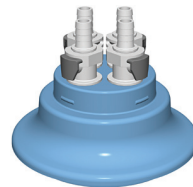
**Adapter, 1/4" HB x 4**

Cap Size	Hose Barb Size	No. of Quick Connects	Cat. No.	Pack of
120	1/4"	4	89170-864	1



**Adapter, 1/4" HB x 2**

Cap Size	Hose Barb Size	No. of Quick Connects	Cat. No.	Pack of
120	1/4"	2	89170-856	1



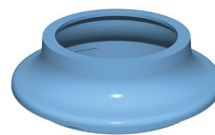
**Adapter, 3/8" HB x 4**

Cap Size	Hose Barb Size	No. of Quick Connects	Cat. No.	Pack of
120	3/8"	4	89170-866	1



**Adapter, 3/8" HB x 2**

Cap Size	Hose Barb Size	No. of Quick Connects	Cat. No.	Pack of
120	3/8"	2	89170-858	1



**Adapter, Bioprocess**

Cap Size	Hose Barb Size	No. of Quick Connects	Cat. No.	Pack of
120	—	—	89170-868	1

**Please Note:**

- All quick-connect adapters come with valved, panel-mount sockets.
- All carboys ship with closed caps (excludes sanitary carboys).
- Adapters require the purchase of an open cap.

## Quick Coupling Assembly



Panel-Mounted Socket,  
Valved with Gasket and Nut



In-Line Socket and  
Plug, Valved



In-Line Plug,  
Non-Valved



In-Line Socket,  
Valved



Elbow Plug, Non-Valved

Tube Size, I.D., mm (in.)	Length, mm (in.)	Width, mm (in.)	Height, mm (in.)	Cat. No.	Pack of
<b>Panel-Mounted Socket, Valved with Gasket and Nut</b>					
6.4 (1/4)	53.3 (2 1/8)	22.9 (7/8)	26.7 (1 1/16)	89176-876	6
7.9 (5/16)	53.3 (2 1/8)	22.9 (7/8)	26.7 (1 1/16)	89176-878	6
9.5 (3/8)	53.3 (2 1/8)	22.9 (7/8)	26.7 (1 1/16)	89176-880	6
<b>In-Line Socket and Plug, Valved</b>					
6.4 (1/4)	53.3 (2 1/8)	19.1 (3/4)	23.9 (15/16)	89176-912	2
7.9 (5/16)	53.3 (2 1/8)	19.1 (3/4)	23.9 (15/16)	89176-914	2
9.5 (3/8)	53.3 (2 1/8)	19.1 (3/4)	23.9 (15/16)	89176-916	2
<b>In-Line Plug, Valved</b>					
6.4 (1/4)	52.1 (2 1/16)	17.8 (11/16)	17.8 (11/16)	89176-892	6
7.9 (5/16)	52.1 (2 1/16)	17.8 (11/16)	17.8 (11/16)	89176-894	6
9.5 (3/8)	48.2 (1 13/16)	17.8 (11/16)	17.8 (11/16)	89176-896	6
<b>In-Line Plug, Non-Valved</b>					
6.4 (1/4)	34.3 (1 3/8)	17.8 (11/16)	17.8 (11/16)	89176-898	6
7.9 (5/16)	49 (1 15/16)	17.8 (11/16)	17.8 (11/16)	89176-900	6
9.5 (3/8)	34.3 (1 3/8)	17.8 (11/16)	17.8 (11/16)	89176-902	6
<b>In-Line Socket, Valved</b>					
6.4 (1/4)	51.3 (2)	19.1 (3/4)	23.9 (15/16)	89176-882	6
7.9 (5/16)	51.3 (2)	19.1 (3/4)	23.9 (15/16)	89176-884	6
9.5 (3/8)	51.3 (2)	19.1 (3/4)	23.9 (15/16)	89176-886	6
<b>In-Line Socket, Non-Valved</b>					
6.4 (1/4)	34.3 (1 3/8)	19.1 (3/4)	23.9 (15/16)	89176-888	6
9.5 (3/8)	34.3 (1 3/8)	19.1 (3/4)	23.9 (15/16)	89176-890	6
<b>Elbow Plug, Valved</b>					
6.4 (1/4)	36.8 (1 7/16)	16 (5/8)	32.5 (1 1/4)	89176-908	6
9.5 (3/8)	37.6 (1 1/2)	16 (5/8)	32.5 (1 1/4)	89176-910	6
<b>Elbow Plug, Non-Valved</b>					
6.4 (1/4)	30.5 (1 1/4)	16 (5/8)	32.5 (1 1/4)	89176-904	6
9.5 (3/8)	30.5 (1 1/4)	16 (5/8)	32.5 (1 1/4)	89176-906	6

## Versatile Barbs and Spigots



### Spigot

Tube Size, I.D., mm (in.)	Cat. No.	Pack of
—	89176-922	2



### Closed Spigot Fitting

Tube Size, I.D., mm (in.)	Cat. No.	Pack of
—	89176-924	1



### 1/4" Hose Barb Spigot Fitting

Tube Size, I.D., mm (in.)	Cat. No.	Pack of
6.4 (1/4)	89176-926	1



### 3/8" Hose Barb Spigot Fitting

Tube Size, I.D., mm (in.)	Cat. No.	Pack of
9.5 (3/8)	89176-928	1



### 1/2" Hose Barb Spigot Fitting

Tube Size, I.D., mm (in.)	Cat. No.	Pack of
12.7 (1/2)	89176-930	1



### 3/4" Hose Barb Spigot Fitting

Tube Size, I.D., mm (in.)	Cat. No.	Pack of
19.1 (3/4)	89176-932	1



### 3/4" Sanitary Spout Hose Barb Spigot Fitting

Tube Size, I.D., mm (in.)	Cat. No.	Pack of
19.1 (3/4)	89176-934	1

# VWR® Carboy Lifting Instructions



## Lifting Instructions

VWR® has designed its carboys for safe lifting. Each carboy has full handle grips at the top and hand holds at the bottom. Please follow these recommendations for safe lifting.



Bend your knees and keep your back straight. Never twist or bend your back.



Have help. Always have two people for lifting full 20 liter and 40 liter carboys. Bottom and top handles make this lifting option possible.



Lifting to pour from void volume below spigot is made easy with the bottom handle in the back of carboy.



Lift close to your body. Have a firm grip and keep balanced. Use bottom handles for a more stable grip.

# VWR® Carboy Cleaning Instructions

VWR carboys are specifically designed to make cleaning and sanitization easy. The wider mouth, along with the materials of construction, enables quick and thorough washing and rinsing. Before washing and sanitizing, it is important to consider a few key points.

## Water



## Quality

Use laboratory quality, de-ionized water. Tap water, no matter the quality, can often contain unacceptable levels of particulate matter, contaminating organic and inorganic compounds, and high levels of microorganisms.

**Washing:** Never use abrasive cleaning agents. Follow the cleaning agent's instructions for effective detergent concentration and maximum contact times.

1. Fill carboy no more than one-quarter full with an appropriate cleaning agent.
2. Shake carboy to wet all surfaces.
3. Use a soft brush to remove debris from the sides of the carboy.
4. Drain and rinse carboy.

## Water



## Temperature

Use a lower washing temperature (approximately 50° C) combined with an effective cleaning agent (such as Alconox\*) diluted as per the manufacturer's recommendation.

**Rinsing:** Effective rinsing of the carboy is as important as washing.

1. Use de-ionized water.
2. Attach a small length of hose to your water source. The hose should be long enough to reach the bottom of the carboy.
3. While holding the carboy over a sink, turn the carboy upside down with the hose inside the carboy.
4. Turn the water on and rinse all surfaces until no sign of detergent remains.

**Sanitization:** For critical applications requiring a sanitized carboy, use a polypropylene carboy that can be autoclaved.

\*Alconox can be purchased from VWR®



1.800.932.5000 | [vwr.com](http://vwr.com)

Prices and product details are current when published; subject to change without notice. | Certain products may be limited by federal, state, provincial, or local regulations. | VWR makes no claims or warranties concerning sustainable/green products. Any claims concerning sustainable/green products are the sole claims of the manufacturer and not those of VWR International, LLC. All prices are in US dollars unless otherwise noted. Offers valid in US and Canada, void where prohibited by law or company policy, while supplies last. | VWR, the VWR logo and variations on the foregoing are registered (®) or unregistered trademarks and service marks, of VWR International, LLC and its related companies. All other marks referenced are registered by their respective owner(s). | Visit [vwr.com](http://vwr.com) to view our privacy policy, trademark owners and additional disclaimers. © 2012 VWR International, LLC. All rights reserved.