



White Knight[®]
Engineered Products

9525 Monroe Road
Suite 100
Charlotte NC 28270

Phone: 704.542.6876 Fax: 704.910.8065 customerservice@wkep.com

Product Specification

Style Number: 12 L4 6145 T82A 3P

Revision: A

PO # _____

Release Date: 05.25.17

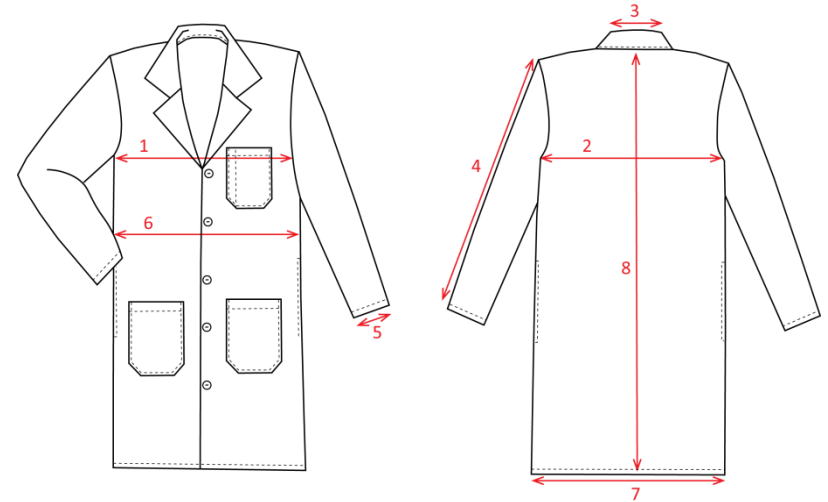
Inspected by _____

General Description

Garment Type	Lab Coat
Collar	Lapel
Sleeves	Set - In
Sleeve Opening	Plain Hem
Front Enclosure	Buttons
Fabric	90 T82A 060.000 80% Poly / 20% Cotton – Twill Side to be Facing Out, Plain Side toward Inside
Seams	Overcast

Construction Details

- 2 Outside Waist Pockets 7" W x 7" D
- 1 Left Breast Pocket 5 ½"W x 5 ½" D with a 1" Pencil Slot
- Hem Pocket ¾"
- Pockets and Pencil Slot will be bar-tacked
- Hemmed Sleeves
- Front Closure is by means of 5 Buttons. First button will be set 8" below Collar Seam, all remaining Buttons will be placed 5" apart
- Garment Closure left over right
- Lapel Collar will be single needle set and stitched down
- Single needle hemmed Bottom finishing ¾" wide with a ¼" turn under
- For Details on Label and Placement Refer to Config Specification



Finished Measurements

Ref	Feature	XXS	XS	S	M	L	XL	2XL	3XL	4XL	5XL	Actual
1	Chest	36	40	44	48	51	55	59	64	68	72	
2	Across Back	17 ½	19 ½	21 ½	23 ½	25 ½	27	29	31	33	35	
3	Collar	15	15	15	15	16	18	18 ½	18 ½	18 ½	19	
4	Sleeve Outseam	23	23 ½	24	24	25	25	25	25	26	26	
5	Sleeve Opening	10	10 ½	11	11 ½	12	13	13	14	14	14	
6	Waist	37	41	45	49	52	57	61	66	70	74	
7	Sweep	42	45 ½	49	53	56	61	64	69	72	76	
8	Length	41	41	41	41	41	41	41	41	41	41	

Tolerance < 12 inches +/- ½ inch >12 inches +/- 1 inch

