



White Knight[®]
Engineered Products

9525 Monroe Road
Suite 100
Charlotte NC 28270

Product Specification

Style Number: 12 L2 5059 BARE 3P

Phone: 704.542.6876 Fax: 704.910.8065 customerservice@wkep.com

Revision: C

PO # _____

Release Date: 05.15.19

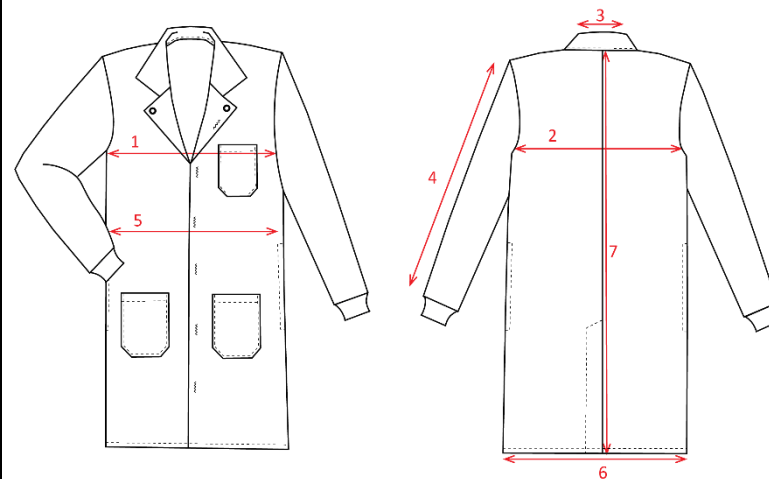
Inspected by _____

General Description

Garment Type	Lab Coat
Collar	Lapel
Sleeves	Set - In
Sleeve Opening	Polyester Cuffs
Front Enclosure	Snaps
Fabric	ESD Barrier
Thread	Poly Core – Tex 27
Seams	Overcast

Construction Details

- 2 Outside Waist Pockets 7" W x 7" D
- 1 Left Breast Pocket 5 ½" W x 5 ½" D
- Left Side Front Placket has Self-Fabric Reinforced Placket with Vertical Bartacks
- Right Facing is Overlock Finished and Folded Back
- Two Piece Back Constructed with a 10" Long Vent
- Polyester Cuffs on Sleeves
- Side Seam Openings for Easy Access to Trousers
- Front Closure is by means of 6 Sets of Snaps. First Snap will be Set below Collar Seam, all Remaining Snaps will be Placed 5" Apart
- Snaps are 5/8" from Side Edge to Center of Snap
- Garment Closure Left over Right
- Single Needle Hemmed Bottom Finishing ¾" Wide with a ¼" Turn-under
- For Details on Labels and Placement Refer to Config Specification



Finished Measurements

Ref	Feature	2XS	XS	S	M	L	XL	2XL	3XL	4XL	5XL	Actual
1	Chest	36	40	44	48	51	55	59	64	68	72	
2	Across Back	17 ½	19 ½	21 ½	23 ½	25 ½	27	29	31	33	35	
3	Collar	15	15	15	15	16	18	18 ½	18 ½	18 ½	19	
4	Sleeve OutSeam (Not Including Cuff)	23	23 ½	24	24	25	25	25	25	26	27	
5	Waist	37	41	45	49	52	57	61	66	70	73	
6	Sweep	42	45 1/2	49	53	56	61	64	69	72	75	
7	Length	41	41	41	41	41	41	41	41	41	41	

Shorts	Longs
-3" Body Length	+2" Body Length
-3" Sleeve Inseam	+2" Sleeve Inseam

Tolerance:

<12 inches + / - ½"
>12 inches + / - 1"