

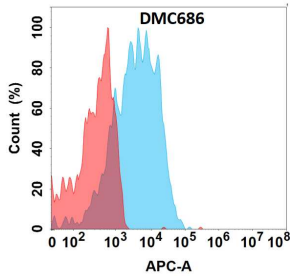
Anti-Placental Alkaline Phosphatase / PLAP Chimeric Antibody [DMC686] - Azide free (A318682)

Specifications:

Name:	Anti-Placental Alkaline Phosphatase / PLAP Chimeric Antibody [DMC686] - Azide free
Description:	Recombinant chimeric monoclonal [DMC686] antibody to Placental Alkaline Phosphatase / PLAP.
Applications:	Flow Cytometry
Recommended Dilutions:	Flow Cytometry: 1:100
Reactivity:	Human
Host:	Rabbit / Human
Clonality:	Monoclonal
Clone ID:	DMC686
Isotype:	IgG1
Conjugate:	Unconjugated
Purification:	Affinity chromatography.
Concentration:	Reconstitution dependent.
Product Form:	Lyophilized
Formulation:	Lyophilized from sterile Phosphate Buffered Saline, pH 7.4. Normally 5%-8% Trehalose is added as a protectant before lyophilization.
Storage:	Shipped at 4°C. Lyophilized: Store at -20°C to -80°C. Reconstituted: Aliquot and store at -80°C. Product is stable for one year. Avoid freeze / thaw cycles.
General Notes:	This antibody is a Recombinant rabbit chimeric monoclonal antibody containing human IgG1 Fc.
Disclaimer:	This product is for research use only. It is not intended for diagnostic or therapeutic use.

Anti-Placental Alkaline Phosphatase / PLAP Chimeric Antibody [DMC686] - Azide free (A318682)

Images:



Flow cytometry analysis with Anti-Placental Alkaline Phosphatase / PLAP Chimeric Antibody [DMC686] - Azide free (A318682) on Expi293 cells transfected with human ALPP (blue histogram) or Expi293 transfected with irrelevant protein (red histogram).