



**White Knight**  
Engineered Products

9525 Monroe Road  
Suite 100  
Charlotte NC 28270

Phone: 704.542.6876 Fax: 704.910.8065 customerservice@wkep.com

## Product Specification

**Style Number: 12 L1 6052 P65A 3P**

Revision: A

PO # \_\_\_\_\_

Release Date: 05.25.17

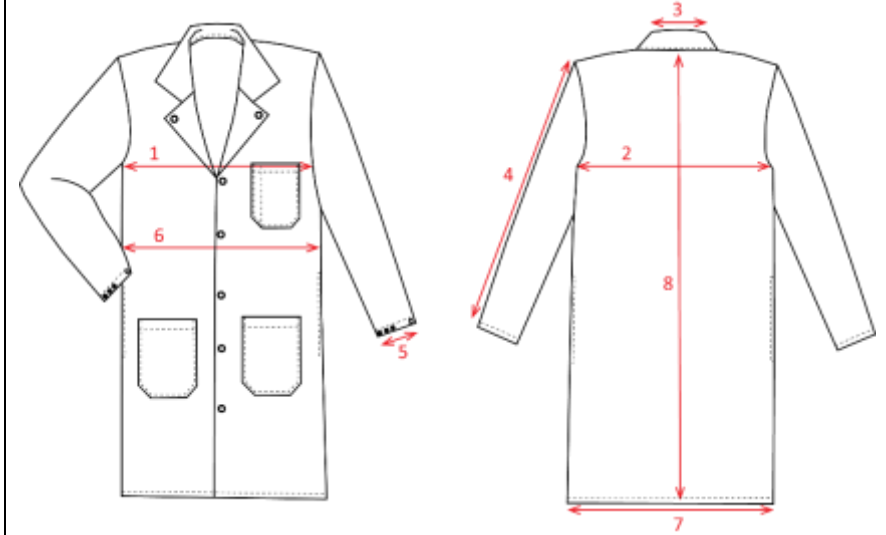
Inspected by \_\_\_\_\_

### General Description

Garment Type	Lab Coat
Collar	Lapel
Sleeves	Set - In
Sleeve Opening	Snaps
Front Enclosure	Snaps
Fabric	90 P65A 061.000 65% Poly / 35% Cotton
Seams	Overcast

### Construction Details

- 2 Outside Waist Pockets 7" W x 7" D
- 1 Left Breast Pocket 5 ½"W x 5 ½" D with a 1" Pencil Slot
- Pockets and Pencil Slot will be bar-tacked
- Snap closure on Sleeves
- Front Closure is by means of 6 sets of snaps. First Snap will be set below Collar Seam, all remaining Snaps will be placed 5" apart
- Garment Closure left over right
- Lapel Collar will be single needle set and stitched down
- Single needle hemmed Bottom finishing 3/4" wide with a ¼" turn under
- For Details on Label and Placement Refer to Config Specification



### Finished Measurements

Ref	Feature	XXS	XS	S	M	L	XL	2XL	3XL	4XL	5XL	Actual
1	Chest	36	40	44	48	51	55	59	64	68	72	
2	Across Back	17 ½	19 ½	21 ½	23 ½	25 ½	27	29	31	33	35	
3	Collar	15	15	15	15	16	18	18 ½	18 ½	18 ½	19	
4	Sleeve Outseam	23	23 ½	24	24	25	25	25	25	26	26	
5	Sleeve Opening	10	10 ½	11	11 ½	12	13	13	14	14	14	
6	Waist	37	41	45	49	52	57	61	66	70	74	
7	Sweep	42	45 ½	49	53	56	61	64	69	72	76	
8	Length	39	39	39	39	39	39	39	39	39	39	

Tolerance < 12 inches +/- ½ inch >12 inches +/- 1 inch