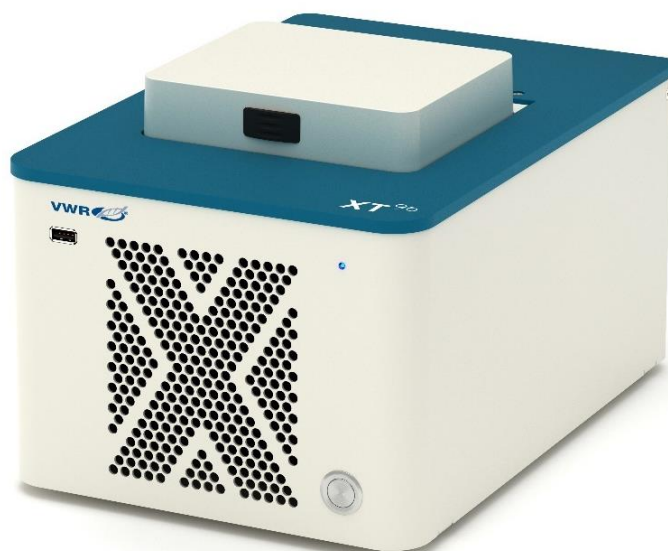


Quick start manual

VWR® PCR Thermal Cycler XTender⁹⁶

	EU cat. no	US cat. no
XTender96	732-3657	76452-155
XTender96 Gradient	732-3658	76452-157



Installation of the PCR cycler XTender⁹⁶

The VWR® thermal cycler XTender⁹⁶ is a fully equipped PCR thermal cycler without a touch screen, the ideal device controlled by a PC or from another XT⁹⁶ thermal cycler.

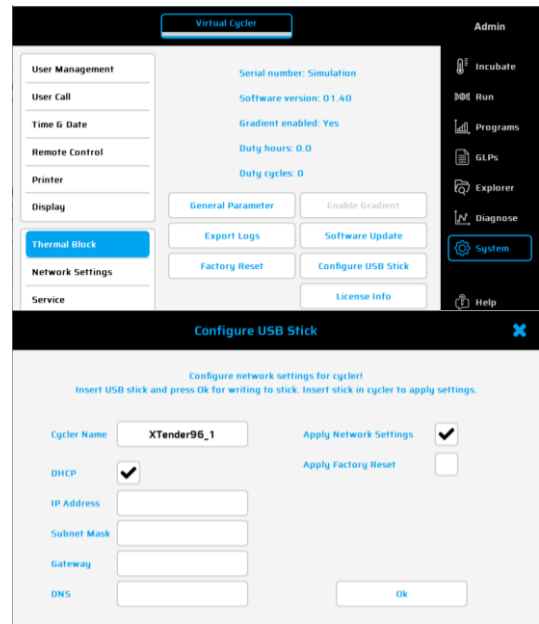
To connect multiple XTender⁹⁶ thermal cyclers, you need:

- An Ethernet cable for each XTender⁹⁶ thermal cycler
- A network or an external network router (DHCP server is required)
- A XT⁹⁶ thermal cycler (Master unit) or the XT⁹⁶ PC Software on your PC

Please ask your network administrator for the required settings.

Generate a "Network Configuration USB-Stick"

1. Power on a XT⁹⁶ thermal cycler (Master unit) or start the XT⁹⁶ PC Software on your PC (available on the "XT⁹⁶ thermal cycler webpage at www.vwr.com).
2. Use the "System" dialogue in the Software and click on "Thermal Block" and "Configure USB Stick".
3. Insert an USB Stick into the Cycler or PC.
4. Configure the network settings for the XTender⁹⁶ thermal cycler, as shown in the picture.
5. Make sure each instrument name is unique and press OK.
6. A "XT96ConfigFile" file will be generated and stored on the USB stick.
7. Use this "Network Configuration USB Stick" to set up the Network configurations on your XTender⁹⁶ thermal cycler.



Set up the Connections

1. Connect the Ethernet cable to the back of the thermal cycler and connect the other end of the cable to the network.
2. Repeat step 1 for each thermal cycler.
3. Power on the XTender⁹⁶ thermal cycler.
4. Plug the "Network Configuration USB-Stick" into an USB port of the XTender⁹⁶ thermal cycler.
Note: For each XTender⁹⁶ thermal cycler, a new "XT96 Config File" must be created.
5. The XTender⁹⁶ thermal cycler will recognize the USB stick and set up the network configuration automatically. After finalization, the instrument will switch off.
6. Remove the "Network Configuration USB-Stick" from the USB port of the XTender⁹⁶.
7. Power on the XTender⁹⁶ thermal cycler
8. Power on a XT⁹⁶ thermal cycler (Master unit) or start the XT⁹⁶ PC Software on your PC and click on "Remote Control" in the "System" dialogue.
9. Use the "Scan Network" function to search network for a XTender⁹⁶ thermal cyclers. The new cycler will be displayed in the LAN control window (in our example: XT⁹⁶).
Note: All existing connections must be disconnected before searching.
10. To connect/reconnect, mark the thermal cycler in the overview and use the button 'Connect/Disconnect' to start a new connection.
Note: The XT⁹⁶ or PC Software must have the same software version as the XTender⁹⁶.
11. Follow the instructions in the XT⁹⁶ thermal cycler manual how to operate the XT⁹⁶ or XTender⁹⁶ thermal cycler.

