

**Datasheet for 201-401-B84****CXCL10 Antibody****Overview**

<b>Description:</b>	Anti-Bovine CXCL10 (Rabbit) Antibody - 201-401-B84
<b>Item No.:</b>	201-401-B84
<b>Size:</b>	100 µg
<b>Applications:</b>	ELISA, WB
<b>Reactivity:</b>	Bovine (Bos Taurus), Capra hircus (Goat), Ovis aries (Sheep)
<b>Host Species:</b>	Rabbit

**Product Details**

<b>Background:</b>	CXCL10 is a secreted chemotactic cytokine for monocytes and T-lymphocytes. It is involved in the inflammatory response. CXCL10 can be upregulated in response to infection. It binds to CXCR3.
<b>Synonyms:</b>	rabbit anti-CXCL10 Antibody, IP-10, C-X-C motif chemokine 10, Small-inducible cytokine B10
<b>Host Species:</b>	Rabbit
<b>Clonality:</b>	Polyclonal
<b>Format:</b>	IgG

**Target Details**

<b>Gene Name:</b>	CXCL10
<b>Reactivity:</b>	Bovine (Bos Taurus), Capra hircus (Goat), Ovis aries (Sheep)
<b>Immunogen Type:</b>	Recombinant Protein
<b>Immunogen:</b>	This protein-A purified antibody was prepared from whole rabbit serum produced by repeated immunizations with a recombinant protein raised in yeast, corresponding to the 83 amino acids of the mature bovine CXCL10 protein.

**Purity/Specificity:** This product was Protein-A purified from monospecific antiserum by chromatography. This antibody is specific for bovine CXCL10 protein. A BLAST analysis was used to suggest cross-reactivity with CXCL10 from bovine based on 100% homology with the immunizing sequence. Partial reactivity is expected against sheep and goat based on 94-95% homology. Cross-reactivity with CXCL10 from other sources has not been determined.

**Relevant Links:**

- [UniProtKB - Q2KIQ8](#)
- [NCBI - NP\\_001040016](#)
- [GenelD - 615107](#)

## Application Details

<b>Tested Applications:</b>	ELISA, WB
<b>Application Note:</b>	This protein-A purified CXCL10 antibody has been tested by ELISA and Western blotting. Specific conditions for reactivity should be optimized by the end user. Expect a band approximately 9.3 kDa in size corresponding to bovine CXCL10 protein by western blotting in the appropriate cell lysate or extract.
<b>Assay Dilutions:</b>	All assays should be optimized by the user. Recommended dilutions (if any) may be listed below.
<b>ELISA:</b>	1:500
<b>WB:</b>	1 µg/mL

## Formulation

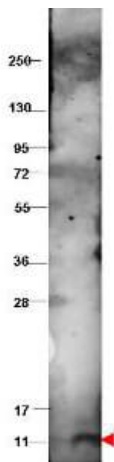
<b>Physical State:</b>	Lyophilized
<b>Concentration:</b>	1.0 mg/mL by UV absorbance at 280 nm
<b>Buffer:</b>	0.02 M Potassium Phosphate, 0.15 M Sodium Chloride, pH 7.2
<b>Preservative:</b>	0.01% (w/v) Sodium Azide
<b>Stabilizer:</b>	None
<b>Reconstitution Volume:</b>	100 µL
<b>Reconstitution Buffer:</b>	Restore with deionized water (or equivalent)

## Shipping & Handling

**Shipping Condition:** Ambient

<b>Storage Condition:</b>	Store vial at 4° C prior to restoration. For extended storage aliquot contents and freeze at -20° C or below. Avoid cycles of freezing and thawing. Centrifuge product if not completely clear after standing at room temperature. This product is stable for several weeks at 4° C as an undiluted liquid. Dilute only prior to immediate use.
<b>Expiration:</b>	Expiration date is one (1) year from date of receipt.

## Images



### Western Blot

Western blot using Rockland's protein-A purified anti-bovine CXCL10 antibody shows detection of recombinant bovine CXCL10 at 9.3 kDa (arrowhead) raised in yeast. The protein was purified and resolved by SDS-PAGE, then transferred to PVDF membrane. Membrane was blocked with 3% BSA (BSA-30, diluted 1:10), and probed with 1 µg/mL primary antibody overnight at 4°C. After washing, membrane was probed with IRDye800™ Conjugated Goat Anti-Rabbit IgG (p/n 611-132-122) for 45 min at room temperature.

## Disclaimer

This product is for research use only and is not intended for therapeutic or diagnostic applications. Please contact a technical service representative for more information. All products of animal origin manufactured by Rockland Immunochemicals are derived from starting materials of North American origin. Collection was performed in United States Department of Agriculture (USDA) inspected facilities and all materials have been inspected and certified to be free of disease and suitable for exportation. All properties listed are typical characteristics and are not specifications. All suggestions and data are offered in good faith but without guarantee as conditions and methods of use of our products are beyond our control. All claims must be made within 30 days following the date of delivery. The prospective user must determine the suitability of our materials before adopting them on a commercial scale. Suggested uses of our products are not recommendations to use our products in violation of any patent or as a license under any patent of Rockland Immunochemicals, Inc. If you require a commercial license to use this material and do not have one, then return this material, unopened to: Rockland Inc., P.O. BOX 5199, Limerick, Pennsylvania, USA.