

VWR 
1.800.932.5000 vwr.com

Motic[®]
MORE THAN MICROSCOPY



Professional **MICROSCOPY**

S O L U T I O N S



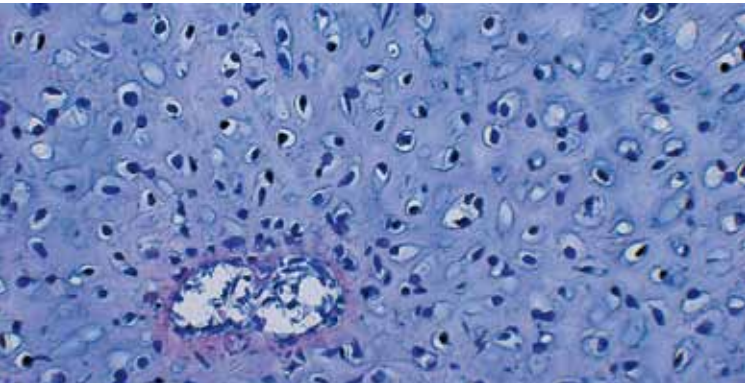
Professional MICROSCOPY

S O L U T I O N S

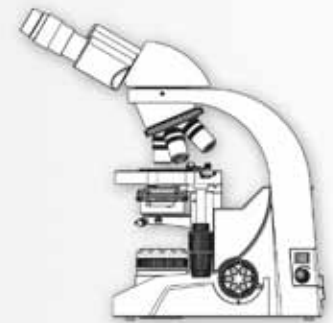
The **Motic Professional Microscopy Solutions** is an overview of high quality upright microscopes (BA- Series), inverted microscopes (AE-Series), stereo zoom microscopes (SMZ-Series) and digital cameras (Moticam).

Whether you are a teacher at a University, a Lab Technician, a Researcher, working in the Industrial sector or a devoted microscopist, **in this catalogue you will find the suitable microscope for your application and within your budget.**

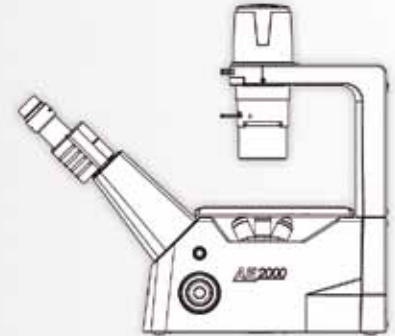
It is Motic's goal to provide you with **the latest technologies, excellent quality and the best possible service wherever you need it.**



BA
SERIES



AE
SERIES



SMZ
SERIES



MOTICAM
SERIES



BA 210

BA210 Binocular
BA210 Trinocular
BA210 Digital

Cat. No. 89130-128
Cat. No. 89130-130
Cat. No. 89130-136

Routine University and Laboratory microscope

- Binocular or Trinocular [20/80] head Siedentopf type, 30° inclined, 360° rotating
- Widefield eyepieces N-WF10X/20mm with diopter adjustment on both eyepieces
- Reversed quadruple revolving nosepiece
- CCIS® EF-N Plan Achromatic objectives 4X, 10X, 40X S, 100X S-Oil
- Coaxial coarse and fine focusing system with tension adjustment
- Built in low position coaxial mechanical stage (Right-hand control)
- Size 140 X 135mm, 76 X 50 cross movement
- Focusable Abbe condenser N.A. 1.25 with iris diaphragm and slot
- Quartz halogen 6V/30W or 3W LED illumination with intensity control

Available accessories (Please contact your VWR or Motic Representative for Available accessories)

- Phase contrast and darkfield sliders (10X & 40X)
- Polarizing and Analyzing filter



BA 310

BA310 Binocular
BA310 Trinocular
BA310 Digital

Cat. No. 89130-138
Cat. No. 89130-140
Cat. No. 89130-146

High performance microscope for Laboratories, Clinics and Hospitals

- Binocular or Trinocular [20/80] head Siedentopf type, 30° inclined, 360° rotating
- Widefield eyepieces N-WF10X/20mm with diopter adjustment on both eyepieces
- Reversed quintuple revolving nosepiece
- CCIS® EF-N Plan Achromatic objectives 4X, 10X, 40X S, 100X S-Oil
- Coaxial coarse and fine focusing system with tension adjustment
- Built in low position coaxial mechanical stage (Right-hand control)
- Size 175 X 140mm, 76 X 50 cross movement
- Focusable and centrabale Abbe condenser N.A. 0.90/1.25 with iris diaphragm and slot
- Koehler illumination halogen 6V/30W or 3W LED with intensity control
- *The BA310 is also available as a teaching/discussion system, side-by-side or face-to-face.*

Available accessories (Please contact your VWR or Motic Representative for Available accessories)

- Phase contrast and darkfield sliders (10X & 40X)
- Phase contrast (10X, 20X, 40X and 100X) and darkfield turret (10X-40X) condenser
- Polarizing and Analyzing filter



BA410

BA410 Binocular Cat. No. 89168-432
BA410 Trinocular Cat. No. 89168-434
BA410 XBE-EPI-Fluorescence Cat. No. 97021-900

High quality multi-task microscope for research usage

- Widefield eyepieces N-WF10X/22mm with diopter adjustment on both eyepieces
- Reversed sextuple* revolving nosepiece (**Quintuple nosepiece available on request*)
- CCIS® EC-H Plan Achromatic objectives 4X, 10X, 40X S, 100X S-Oil
- Coaxial coarse and fine focusing system with tension adjustment
- Built in low position coaxial mechanical stage (Right-hand control)
- Achromat swing-out condenser N.A. 0.90 with iris diaphragm, focusable and centrable
- Koehler illumination halogen 6V/30W with external lamp house and intensity control
- The BA410 is also available as a teaching/discussion system up to 5-heads.
- Additionally the BA410 can be equipped with the Ergo (tilting) or Ergo plus (tilting and telescopic) head.

Available accessories (Please contact your VWR or Motic Representative for Available accessories)

- Phase contrast and darkfield sliders (10X & 40X)
- Phase contrast (10X, 20X, 40X and 100X) and darkfield turret (10X-40X) condenser
- Polarizing and Analyzing filter
- Epi-Fluorescence attachment and fluorescence filter cubes



AE2000

AE2000 Binocular Cat. No. 89168-388
AE2000 Trinocular Cat. No. 89168-390
AE2000 Binocular inverted microscope with PL PH 20X Cat. No. 89306-272
AE2000 Trinocular inverted microscope with PL PH 20X Cat. No. 89306-274

Routine live cell applications

- Binocular / Binocular tilting 30°-60° / Trinocular [20/80] and 360° swiveling
- Widefield eyepieces N-WF10X/20mm with diopter adjustment on both eyepieces
- Side facing quadruple nosepiece
- CCIS® Plan Achromat objectives PL4X, LWD PL40X
- CCIS® Plan Achromat Phase objectives PL Ph10X, LWD PL Ph20X
- ELWD condenser N.A. 0.30
- Phase slider with PH1, BF and PH2, phase centering telescope
- Plain stage with metal & glass stage inserts
- Halogen illumination 6V/30W with intensity control and sleeping mode

Available accessories (Please contact your VWR or Motic Representative for Available accessories)

- CCIS® Plan Achromat objectives PL10X, LWD PL20X
- CCIS® Plan Achromat Phase objectives PL Ph4X, LWD PL Ph40X
- Phase ring PH0, to be used with Ph4x objective
- LED module for LED illumination instead of Halogen
- Attachable mechanical stage
- 35, 54 and 65mm Petri dish holders



AE30/31

AE30 Binocular Inverted Cat. No. 97021-914
AE31 Trinocular Inverted Cat. No. 97021-916
AE30 XBE-EPI Fluorescence Cat. No. 97021-918

Research live cell applications

- Binocular / Trinocular [20/80]
- Widefield eyepieces WFPL10X/22mm with diopter adjustment on both eyepieces
- Side facing quintuple nosepiece
- CCIS® Plan Achromat objectives PL4X
- CCIS® Plan Achromat Phase objectives PL Ph10X, LWD PL Ph20X, LWD PL Ph40X
- ELWD condenser N.A. 0.30
- Phase slider with PH1, BF and PH3, phase centering telescope
- Plain stage with metal & glass stage inserts
- Koehler Halogen illumination 6V/30W with intensity control

Available accessories (Please contact your VWR or Motic Representative for Available accessories)

- CCIS® Plan Achromat objectives PL10X, LWD PL20X, LWD PL60X
- Epi-Fluorescence attachment and fluorescence filter cubes
- Attachable mechanical stage
- 35, 54 and 65mm Petri dish holders



SMZ140/143

Routine inspection and assembly applications

- Greenough zoom optical system
- Binocular / Trinocular head, 45° inclined, 360° rotating
- Widefield eyepieces WF10X/20mm
- 4:1 Zoom ratio, WD=80mm
- Magnification range: 1X-4X
- Compact base stand with pole and head holder
- Coarse focusing system with tension adjustment
- Intensity controlled halogen illumination incident 12V/15W and transmitted 12V/10W
- All SMZ-140/143-N2GG come with black, white and frosted glass stage plates.



SMZ-140 N2GG Binocular
SMZ-140 FBGG Wide Stand

Cat. No. 19000-862
Cat. No. 19000-404

SMZ 168 B/T

Quality control and research applications

- Greenough zoom optical system
 - Binocular / Trinocular head, 35° inclined, 360° rotating
 - Widefield eyepieces WF10X/23mm
 - 6.7:1 Zoom ratio, WD=113mm
 - Magnification range: 0.75X-5X
 - Large working area stand with head holder
 - Coarse focusing system with tension adjustment
 - 12V/10W incident and transmitted halogen or LED illumination with intensity control
- All SMZ-168-BL/TL come with black, white and frosted glass stage plates.

SMZ-168 Bino/Trino Plain Stand
SMZ-168 Bino/Trino Light Stand

Cat. No. 19000-692/696
Cat. No. 19000-694/698



THE **NEW** moticam
THE NEXT GENERATION

Moticam **1SP** | 1.3MP
Moticam **2** | 2MP
Moticam **3** | 3MP
Moticam **5** | 5MP
Moticam **10** | 10MP

- CMOS Sensor
- USB 2.0 output
- Focusable macro lens
- Eyepiece adapters
- Calibration slide
- Macro tube for specimen observation
- Motic Images Plus 2.0 software for PC and Mac

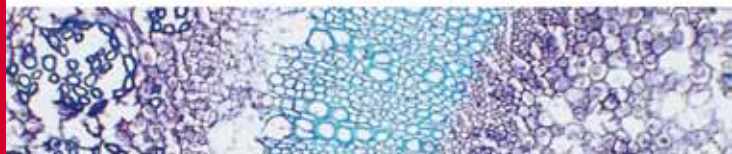
Moticam1SP Cat. No. 89238-596
Moticam 2 Cat. No. 89238-598
Moticam 3 Cat. No. 89238-600
Moticam 5 Cat. No. 89238-602
Moticam 10 Cat. No. 89238-604





MOTICAMPRO SERIES OF CAMERAS

High quality CCD cameras



Motic offer several different CCD cameras with the **Sony ICX** range of chips. The following options are available: Colour, Monochrome, Peltier Cooled Colour or Peltier Cooled Monochrome cameras.

The Peltier cooled camera sensor can be cooled down to 10°C below ambient temperature and therefore ideal for **Fluorescence microscopy**.

- A** Colour
- B** Colour Peltier Cooled
- C** Monochrome
- D** Monochrome Peltier Cooled

Moticom Pro 205 A/B/C/D
Budget High speed camera

Moticom Pro 252 A/B
Intermediate resolution camera

Moticom Pro 282 A/B
High resolution camera


Moticom Pro 285 A/B/C/D
High speed and high quality camera

Moticom Pro 205A Cat. No. 89130-160
Moticom Pro 205B Cat. No. 89130-162
Moticom Pro 205C Cat. No. 89130-164
Moticom Pro 205D Cat. No. 89130-166

Moticom Pro 252A Cat. No. 89130-152
Moticom Pro 252B Cat. No. 89130-154

Moticom Pro 282A Cat. No. 89130-156
Moticom Pro 282B Cat. No. 89130-158

Moticom Pro 285A Cat. No. 89130-168
Moticom Pro 285B Cat. No. 89130-170
Moticom Pro 285C Cat. No. 89130-172
Moticom Pro 285D Cat. No. 89130-174



Canada | China | Germany | Spain | USA

Motic[®]

Motic Incorporation Limited Copyright © 2002-2013. All Rights Reserved. February 2013
Motic is a certified ISO9001, ISO14001 and ISO13485 company. *Designed in Barcelona (Spain)*

VWR  **1.800.932.5000**
vwr.com



Prices and product details are current when published; subject to change without notice. | Certain products may be limited by federal, state, provincial, or local regulations. | VWR makes no claims or warranties concerning sustainable/green products. Any claims concerning sustainable/green products are the sole claims of the manufacturer and not those of VWR International, LLC. All prices are in US dollars unless otherwise noted. Offers valid in US, void where prohibited by law or company policy, while supplies last. | VWR, the VWR logo and variations on the foregoing are registered (®) or unregistered trademarks and service marks, of VWR International, LLC and its related companies. All other marks referenced are registered by their respective owner(s). | Visit vwr.com to view our privacy policy, trademark owners and additional disclaimers. ©2013 VWR International, LLC. All rights reserved.