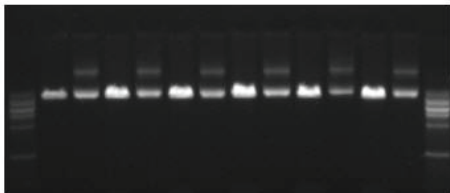


## Purified DNA suitable for downstream applications

M1 E-1 P-1 E-2 P-2 E-3 P-3 E-4 P-4 E-5 P-5 E-6 P-6 M2

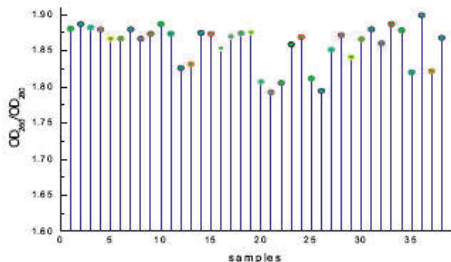


Restriction analysis of plasmid DNA purified with the E.Z.N.A. Plasmid Mini Kit I. Digestion was carried out with EcoRI.

M1: 100bp DNA Marker. M2: 1kb Marker.

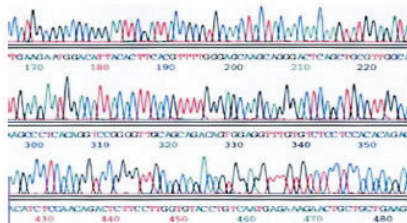
P-1, P-2, P-3, P-4, P-5, P-6: Isolated plasmid DNA.

E-1, E-2, E-3, E-4, E-5, E-6: Plasmid DNA digested with EcoRI.

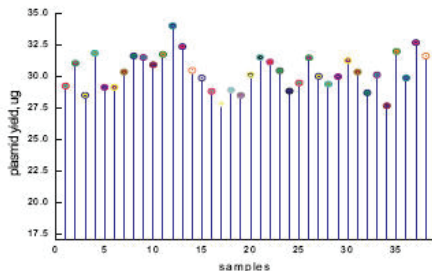


Plasmid isolation results obtained by using E.Z.N.A. Plasmid Mini Kit I. OD readings was measured with different samples. The ratio of OD /OD ranged from 1.80 to 1.90.

## High-Quality DNA for Sequencing Analysis



Sequencing analysis of pET-15b plasmid DNA isolated with the E.Z.N.A. Plasmid Mini Kit I and then analyzed on an ABI 3730 DNA sequencer.



Plasmid isolation results obtained by using E.Z.N.A. Plasmid Mini Kit I. Yields were measured with different samples. The yields ranged from 27.3 ug to 33.4 ug.