

Anti-Bovine CXCL10 (Rabbit) Antibody - 201-401-B84

Code: 201-401-B84

Size: 100 µg

Product Description: Anti-Bovine CXCL10 (Rabbit) Antibody - 201-401-B84

Concentration: 1.0 mg/mL by UV absorbance at 280 nm

PhysicalState: Lyophilized

Label	Unconjugated
Host	Rabbit
Gene Name	CXCL10
Species Reactivity	bovine, goat, and sheep
Buffer	0.02 M Potassium Phosphate, 0.15 M Sodium Chloride, pH 7.2
Stabilizer	None
Preservative	0.01% (w/v) Sodium Azide
Storage Condition	Store vial at 4° C prior to restoration. For extended storage aliquot contents and freeze at -20° C or below. Avoid cycles of freezing and thawing. Centrifuge product if not completely clear after standing at room temperature. This product is stable for several weeks at 4° C as an undiluted liquid. Dilute only prior to immediate use.
Synonyms	IP-10, C-X-C motif chemokine 10, Small-inducible cytokine B10
Application Note	This protein-A purified antibody is suitable for ELISA and Western blotting. Specific conditions for reactivity should be optimized by the end user. Expect a band approximately 9.3 kDa in size corresponding to bovine CXCL10 protein by western blotting in the appropriate cell lysate or extract.
Background	CXCL10 is a secreted chemotactic cytokine for monocytes and T-lymphocytes. It is involved in the inflammatory response. CXCL10 can be upregulated in response to infection. It binds to CXCR3.
Purity And Specificity	This product was Protein-A purified from monospecific antiserum by chromatography. This antibody is specific for bovine CXCL10 protein. A BLAST analysis was used to suggest cross-reactivity with CXCL10 from bovine based on 100% homology with the immunizing sequence. Partial reactivity is expected against sheep and goat based on 94-95% homology. Cross-reactivity with CXCL10 from other sources has not been determined.
Assay Dilutions	User Optimized
ELISA	1:500
WESTERN BLOT	1 µg/mL
OTHER ASSAYS	User Optimized
Expiration	Expiration date is one (1) year from date of opening.
Immunogen	This protein-A purified antibody was prepared from whole rabbit serum produced by repeated immunizations with a recombinant protein raised in yeast, corresponding to the 83 amino acids of the mature bovine CXCL10 protein.
General Reference	Taubert,A., Zahner,H. and Hermosilla,C. (2006) Dynamics of transcription of immunomodulatory genes in endothelial cells infected with different coccidian parasites. Vet. Parasitol. 142 (3-4), 214-222

Related Products

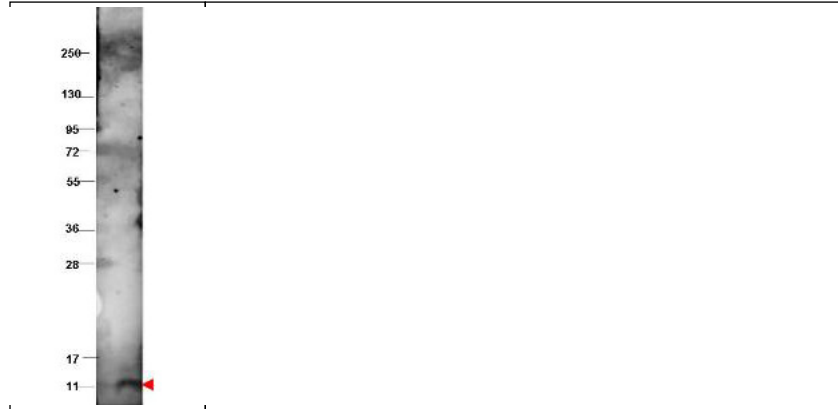
200-401-B74	Anti-Bovine VEGF-A (RABBIT) Antibody - 200-401-B74
201-401-B77	Anti-Bovine IL-1F5 (RABBIT) Antibody - 201-401-B77
201-401-B84	Anti-Bovine CXCL10 (Rabbit) Antibody - 201-401-B84
611-1302	Anti-RABBIT IgG (H&L) (GOAT) Antibody Peroxidase Conjugated - 611-1302

Related Links

Images

1

Western blot using Rockland's protein-A purified anti-bovine CXCL10 antibody shows detection of recombinant bovine CXCL10 at 9.3 kDa (arrowhead) raised in yeast. The protein was purified and resolved by SDS-PAGE, then transferred to PVDF membrane. Membrane was blocked with 3% BSA (BSA-30, diluted 1:10), and probed with 1 µg/mL primary antibody overnight at 4°C. After washing, membrane was probed with IRDye800™ Conjugated Goat Anti-Rabbit IgG (p/n 611-132-122) for 45 min at room temperature.



Disclaimer

This product is for research use only and is not intended for therapeutic or diagnostic applications. Please contact a technical service representative for more information. All products of animal origin manufactured by Rockland Immunochemicals are derived from starting materials of North American origin. Collection was performed in United States Department of Agriculture (USDA) inspected facilities and all materials have been inspected and certified to be free of disease and suitable for exportation. All properties listed are typical characteristics and are not specifications. All suggestions and data are offered in good faith but without guarantee as conditions and methods of use of our products are beyond our control. All claims must be made within 30 days following the date of delivery. The prospective user must determine the suitability of our materials before adopting them on a commercial scale. Suggested uses of our products are not recommendations to use our products in violation of any patent or as a license under any patent of Rockland Immunochemicals, Inc. If you require a commercial license to use this material and do not have one, then return this material, unopened to: Rockland Inc., P.O. BOX 326, Gilbertsville, Pennsylvania, USA.