



**HUMAN TORSO YOUNG
9 PARTS
Cat. No. : AM 0015**

KEY CARD

Manufactured by :
ELECTRONIC INSTRUMENTATION
6, Industrial Estate, Ambala Cantt. INDIA
email : info@eisolabs.com
Website : www.eisolabs.com

HUMAN TORSO YOUNG - 9 Parts

- A Brain
- B Head
- C Ear
- D Larynx
- E Clavicle
- G Right Lung
- G Left Lung
- H Heart
- I Liver
- J Stomach
- K Intestinal Tract

CIRCULATORY SYSTEM

- 24 Superior vena cava
- 25 R. brachiocephalic vein
- 26 L. brachiocephalic vein
- 27 Ascending aorta
- 28 Brachiocephalic trunk
- 29 R. subclavian vein
- 30 L. subclavian vein
- 31 Subclavian artery
- 32 R. internal jugular vein
- 33 L. internal jugular vein
- 34 R. common carotid artery
- 35 L. common carotid artery
- 36 Pulmonary artery
- 37 L. stem bronchus
- 38 L. pulmonary artery
- 39 L. pulmonary vein
- 40 Bronchi
- 41 Bronchial artery
- 42 Bronchial vein
- 43 Bronchioles
- 44 Veinules
- 45 Arterioles
- 46 Facet for costal cartilage
- 47 Diaphragm
- 48 Inferior vena cava

MEDIAN SECTION OF HEAD

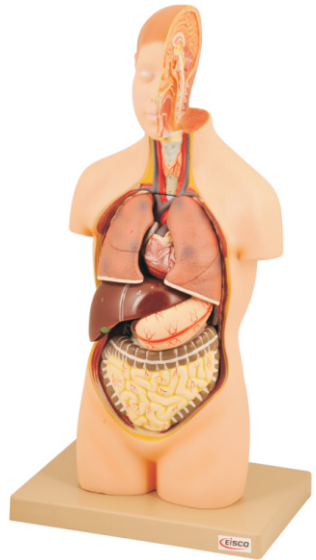
- 1 Skin
- 2 Parietal bone
- 3 Brain
- 4 Corpus callosum
- 5 Septum pellucidum
- 6 Fornix
- 7 Quadrigeminal plate
- 8 Mid brain
- 9 Pons
- 10 Medulla
- 11 Cerebellum
- 12 Frontal sinus
- 13 Septum nasi
- 14 Palate
- 15 Teeth
- 16 Tongue
- 17 Epiglottis

LARYNX

- 18 Thyrochoid membrane
- 19 Superior thyroid notch
- 20 Laryngeal prominence
- 21 Cricoid cartilage
- 22 Ring of trachea
- 23 Thyroid gland

ABDOMEN

- 49 Aorta
- 50 Kidney
- 51 Major Calyx
- 52 Minor Calyx
- 53 Pyramid
- 54 Renal Column
- 55 Cortex
- 56 Suprarenal gland
- 57 Renal artery
- 58 Renal vein
- 59 Superior mesenteric artery
- 60 Supra renal vein



- 61 Spleen
- 62 Splenic vein
- 63 Splenic artery
- 64 Ureter
- 65 Common iliac artery
- 66 Common iliac vein
- 67 Urinary bladder
- 68 Sigmoid colon
- 69 Psoas major
- 70 Quadratus lumborum
- 71 Iliacus
- 72 Fascia iliaca
- 73 Medial and lateral lumbo costal arches
- 74 Middle arcuate ligament
- 75 Oesophagus

LUNGS

- 1 Upper lobe
- 2 Middle lobe
- 3 Lower lobe
- 4 Upper lobe
- 5 Lingula
- 6 Lower lobe

HEART

- 1 Left auricle
- 2 Right auricle
- 3 Left ventricle
- 4 Right ventricle
- 5 Pulmonary trunk
- 6 Auriculo ventricular septum
- 7 Pericardium
- 8 Coronary artery
- 9 Coronary vein
- 10 Tricuspid valve
- 11 Bicuspid valve
- 12 Columna carnea

STOMACH

- 1 Main body
- 2 Fundus
- 3 Lesser curvature
- 4 Greater curvature
- 5 Angular notch
- 6 Pyloric antrum
- 7 Pyloric canal
- 8 Pylorus
- 9 Oesophagus
- 10 Cardiac notch
- 11 Right gastro epiploic artery
- 12 Left gastro epiploic artery
- 13 Short gastric artery
- 14 Left gastric artery
- 15 Right gastric artery

LIVER

- 1 Right lobe
- 2 Left lobe
- 3 Inferior vena cava
- 4 Gall Bladder
- 5 Attachment of falciform ligament
- 6 Caudate tube
- 7 Caudate process
- 8 Non peritoneal surface (bare area)
- 9 Supra renal impression
- 10 Coronary ligament (inferior layer)
- 11 Renal Impression
- 12 Colic impression
- 13 Duodenal impression
- 14 Quadrate lobe
- 15 Tuber omentale
- 16 Gastric impression
- 17 Hepatic artery proper
- 18 Portal vein
- 19 Bile duct

- 20 Pappillary process
- 21 Fissure for ligament venosum
- 22 Falciform ligament
- 23 Oesophageal groove
- 24 Coronary ligament
- 25 Right triangular ligament
- 26 Left triangular ligament

GASTRO-INTESTINAL TRACT

- 1 Transverse colon
- 2 Right colic flexure
- 3 Ascending colon
- 4 Caecum
- 5 Left colic flexure
- 6 Descending colon
- 7 Ileum
- 8 Duodenum
- 9 Pancreas
- 10 Superior pancreatico duodenal artery
- 11 Head of pancreas
- 12 Neck of pancreas
- 13 Inferior pancreatico duodenal artery
- 14 Right colic artery
- 15 Left colic artery
- 16 Sacculi
- 17 Pancreatic duct
- 18 Vermiform appendix