



Profit from the Eagle Advantage®

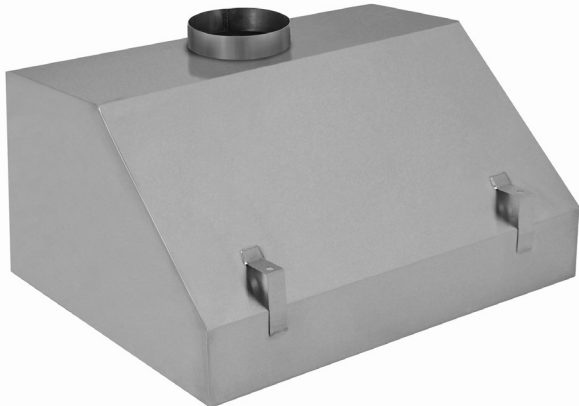
Specification Sheet

Short Form Specifications

Eagle Group Laboratory Exhaust Canopies, model # _____ . Island or wall mount exhaust canopies feature 16 gauge type 304 stainless steel construction, fully welded seams, polished interior and exterior, steel rod suspension brackets, full perimeter condensation edge, 19" overall height, and integral duct collar. Exhaust canopies are available in 30" and 36" depths, and widths ranging from 36" to 96" .



#SSC-IEC-3630-18
island unit



#SSC-WEC-3630-18
wall unit

Item No.:	_____
Project No.:	_____
S.I.S. No.:	_____

Laboratory Exhaust Canopies

MODELS:

- | | |
|--|--|
| <input type="checkbox"/> SSC-IEC-3630-18 | <input type="checkbox"/> SSC-WEC-3630-18 |
| <input type="checkbox"/> SSC-IEC-4830-18 | <input type="checkbox"/> SSC-WEC-4830-18 |
| <input type="checkbox"/> SSC-IEC-6030-18 | <input type="checkbox"/> SSC-WEC-6030-18 |
| <input type="checkbox"/> SSC-IEC-7230-18 | <input type="checkbox"/> SSC-WEC-7230-18 |
| <input type="checkbox"/> SSC-IEC-8430-18 | <input type="checkbox"/> SSC-WEC-8430-18 |
| <input type="checkbox"/> SSC-IEC-9630-18 | <input type="checkbox"/> SSC-WEC-9630-18 |
| <input type="checkbox"/> SSC-IEC-3636-18 | <input type="checkbox"/> SSC-WEC-3636-18 |
| <input type="checkbox"/> SSC-IEC-4836-18 | <input type="checkbox"/> SSC-WEC-4836-18 |
| <input type="checkbox"/> SSC-IEC-6036-18 | <input type="checkbox"/> SSC-WEC-6036-18 |
| <input type="checkbox"/> SSC-IEC-7236-18 | <input type="checkbox"/> SSC-WEC-7236-18 |
| <input type="checkbox"/> SSC-IEC-8436-18 | <input type="checkbox"/> SSC-WEC-8436-18 |
| <input type="checkbox"/> SSC-IEC-9636-18 | <input type="checkbox"/> SSC-WEC-9636-18 |

Design & Construction Features:

- 16 gauge type 304 stainless steel construction.
- Fully welded seams.
- Polished interior and exterior.
- Integrated suspension brackets and duct collar.
- Full-perimeter condensation edge.
- 36", 48", 60", 72", 84" and 96" widths.
- 30" and 36" depths.

EAGLE GROUP

100 Industrial Boulevard, Clayton, DE 19938-8903 USA
 Phone: 302-653-3000 • 800-441-8440 • Fax: 302-653-2065
www.eaglegrp.com
www.eaglemhc.com

For custom configuration or fabrication needs, contact our **SpecFAB®** Division.
 Phone: 302-653-3000 • Fax: 302-653-2065 • e-mail: quotes@eaglegrp.com

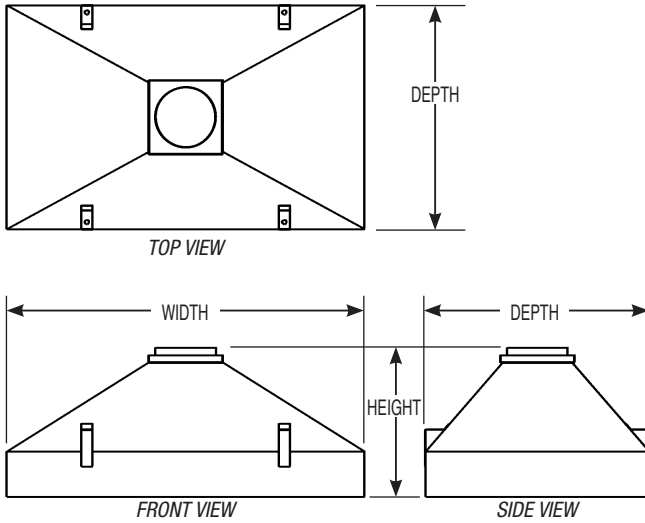
EG03.85 Rev. 04/24

Spec sheets available for viewing, printing or downloading from our online literature library at our websites

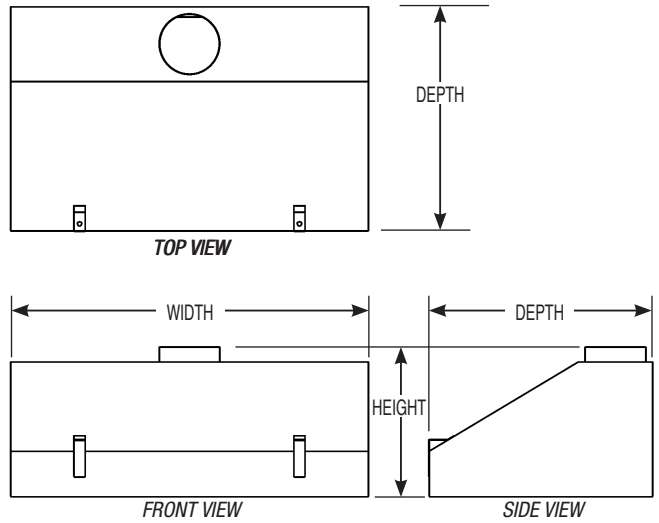
Item No.: _____
 Project No.: _____
 S.I.S. No.: _____

Laboratory Exhaust Canopies

Island models



Wall models



depth			width		overall height *		Island models	Wall models
in.	mm		in.	mm	in.	mm	model #	model #
30"	762		36"	914	19"	483	SSC-IEC-3630-18	SSC-WEC-3630-18
30"	762		48"	1219	19"	483	SSC-IEC-4830-18	SSC-WEC-4830-18
30"	762		60"	1524	19"	483	SSC-IEC-6030-18	SSC-WEC-6030-18
30"	762		72"	1829	19"	483	SSC-IEC-7230-18	SSC-WEC-7230-18
30"	762		84"	2133	19"	483	SSC-IEC-8430-18	SSC-WEC-8430-18
30"	762		96"	2438	19"	483	SSC-IEC-9630-18	SSC-WEC-9630-18
36"	914		36"	914	19"	483	SSC-IEC-3636-18	SSC-WEC-3636-18
36"	914		48"	1219	19"	483	SSC-IEC-4836-18	SSC-WEC-4836-18
36"	914		60"	1524	19"	483	SSC-IEC-6036-18	SSC-WEC-6036-18
36"	914		72"	1829	19"	483	SSC-IEC-7236-18	SSC-WEC-7236-18
36"	914		84"	2133	19"	483	SSC-IEC-8436-18	SSC-WEC-8436-18
36"	914		96"	2438	19"	483	SSC-IEC-9636-18	SSC-WEC-9636-18

* Height includes duct collar.

EAGLE GROUP
 100 Industrial Boulevard, Clayton, DE 19938-8903 USA
 Phone: 302-653-3000 or 800-441-8440 • Fax: 302-653-2065
 www.eaglegrp.com • www.eaglehmc.com

Printed in U.S.A.
 ©2024 by Eagle Group

Rev. 04/24

Spec sheets available for viewing, printing or downloading from our online literature library at our websites

Although every attempt has been made to ensure the accuracy of the information provided, we cannot be held responsible for typographical or printing errors. Information and specifications are subject to change without notice. Please confirm at time of order.