

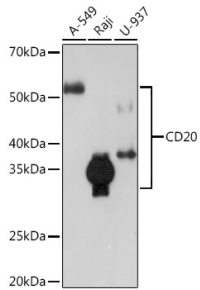
## Anti-CD20 Antibody [ARC51683] (A306625)

### Specifications:

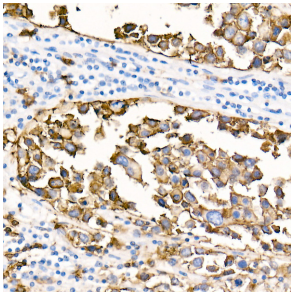
Name:	Anti-CD20 Antibody [ARC51683]
Description:	Rabbit monoclonal [ARC51683] antibody to CD20.
Applications:	WB, IHC, ICC/IF, Flow Cytometry
Recommended Dilutions:	WB: 1:500-1:1,000, IHC: 1:50-1:200, ICC/IF: 1:500-1:1,000, Flow Cytometry: 1:50-1:200
Reactivity:	Human
Immunogen:	A synthetic peptide corresponding to a sequence within amino acids 100-200 of human CD20 (NP_068769.2).
Sequence:	LLAATEKNSRKCLVKGKMIMNSLSLFAAISGMILSIMDILNIKISHFLKMESLNFIRA HTPYINIYNCEPANPSEKNPSTQYCYSIQSLFLGILSVMLIF
Host:	Rabbit
Clonality:	Monoclonal
Clone ID:	ARC51683
Isotype:	IgG
Conjugate:	Unconjugated
Purification:	Affinity purification.
Molecular Weight:	30 - 50 kDa
Product Form:	Liquid
Formulation:	Supplied in Phosphate Buffered Saline, pH 7.3, with 50% Glycerol, 0.05% BSA, and 0.05% Proclin 300.
Storage:	Shipped at 4°C. Upon delivery aliquot and store at -20°C. Avoid freeze / thaw cycles.
Disclaimer:	This product is for research use only. It is not intended for diagnostic or therapeutic use.

## Anti-CD20 Antibody [ARC51683] (A306625)

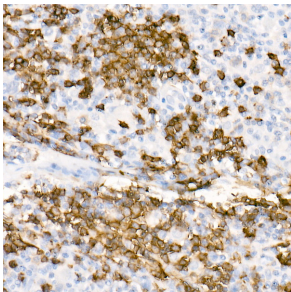
### Images:



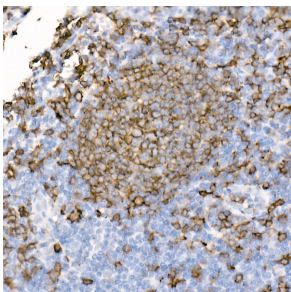
Western blot analysis of extracts of various cell lines, using Anti-CD20 Antibody [ARC51683] (A306625) at 1:1,000 dilution. The secondary antibody was Goat Anti-Rabbit IgG H&L Antibody (HRP) at 1:10,000 dilution. Lysates/proteins were present at 25µg per lane. The blocking buffer used was 3% non-fat dry milk in TBST. Detection was with a ECL Enhanced Kit (RM00021). Exposure time: 3min.



Immunohistochemistry analysis of paraffin-embedded human anaplastic large cell lymphoma tissue using Anti-CD20 Antibody [ARC51683] (A306625) at a dilution of 1:100(40x lens). Perform high pressure antigen retrieval with 10 mM citrate buffer pH 6.0 before commencing with IHC staining protocol.



Immunohistochemistry analysis of paraffin-embedded human Hodgkin lymphoma using Anti-CD20 Antibody [ARC51683] (A306625) at a dilution of 1:100(40x lens). Perform high pressure antigen retrieval with 10 mM citrate buffer pH 6.0 before commencing with IHC staining protocol.



Immunohistochemistry analysis of paraffin-embedded human tonsil using Anti-CD20 Antibody [ARC51683] (A306625) at a dilution of 1:100(40x lens). Perform high pressure antigen retrieval with 10 mM citrate buffer pH 6.0 before commencing with IHC staining protocol.