

# Food Microbiology



Food  
Water  
Dairy  
Beverage



Online Ordering Available

# Food, Water, Dairy, & Beverage Microbiology

## Table of Contents

- 1 Environmental Monitoring Contact Plates
- 3 Petri Plates
- 3 Culture Media for Air Sampling
- 4 Environmental Sampling Boot Swabs
- 6 Environmental Testing Swabs
- 8 Surface Sanitizers
- 8 Hand Sanitation
- 9 Sample Preparation - Dilution Vials
- 10 Compact Dry™
- 12 HardyCHROM™ Chromogenic Culture Media
- 15 Prepared Media
- 24 Agar Plates for Membrane Filtration
- 26 CRITERION™ Dehydrated Culture Media
- 28 Pathogen Detection

# Environmental Monitoring Contact Plates



## Baird Parker Agar

For the selective isolation and enumeration of coagulase-positive staphylococci (*Staphylococcus aureus*) on environmental surfaces.

15x60mm contact plate,  
10/pk ..... 89407-364

## D/E Neutralizing Agar

For the enumeration of environmental organisms. The media is able to neutralize most antiseptics and disinfectants that may inhibit the growth of environmental organisms.

15x60mm contact plate,  
10/pk ..... 89407-482

## Eosin Methylene Blue (EMB)

For isolation and differentiation of gram-negative bacilli from environmental surfaces.

15x60mm contact plate,  
10/pk ..... 89407-510

## HardyCHROM™ ECC

A chromogenic medium for the detection, differentiation, and enumeration of *Escherichia coli* and other coliforms from environmental surfaces (*E. coli* turns blue, coliforms turn red).

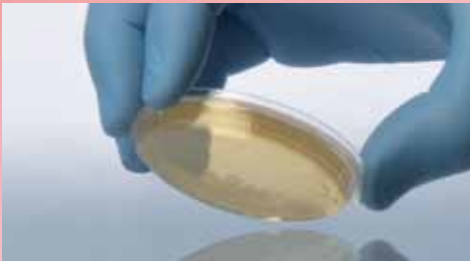
15x60mm plate contact plate,  
10/pk ..... 89407-354

## Malt Extract

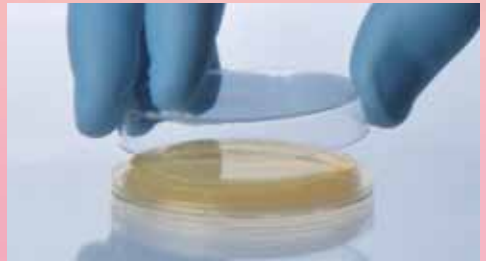
Malt Extract is recommended for the cultivation and isolation of yeasts and molds.

With Chloramphenicol,  
15x60mm contact plate, 0.01%  
10/pk ..... 89407-728

Without Chloramphenicol,  
15x60mm contact plate,  
10/pk ..... 89407-708



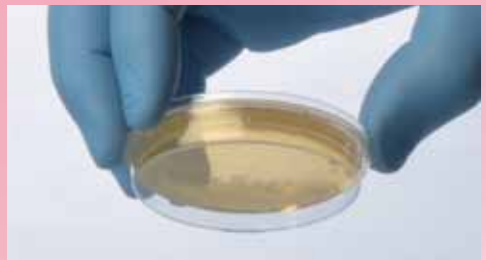
**1** Gently press plate to surface to collect sample.



**2** After sample collection, place lid on plate.



**3** Tap lid into place.



**4** Lid is secure.

# Contact Plates

*Continued from page 1*

## **Mannitol Salt Agar (MSA)**

For the selective isolation and differentiation of *Staphylococcus* spp. For environmental surfaces.  
15x60mm contact plate,  
10/pk .....89407-714

## **Potato Dextrose Agar (PDA) with Chlortetracycline**

For use in the cultivation of yeast and mold and for the induction of sporulation.  
15x100mm plate,  
10/pk ..... 89501-564

## **R2A Agar**

R2A is recommended for enumeration of heterotrophic bacteria from environmental surfaces.  
15x60mm contact plate,  
10/pk .....89407-842

## **Rose Bengal Agar with Chloramphenicol**

For the selective isolation and enumeration of yeasts and molds from environmental surfaces.  
15x60mm contact plate,  
10/pk .....89407-860

## **SubDex (Sabouraud Dextrose) Agar**

For the cultivation of fungi from environmental surfaces.  
15x60mm contact plate,  
10/pk ..... 89407-878

## **Standard Methods Agar with Lecithin and Tween® 80**

For the enumeration of aerobic bacteria from environmental surfaces. Lecithin and Tween® 80 neutralize disinfectants.  
15x60mm contact plate,  
10/pk .....89407-946

## **Tryptic Soy Agar (TSA) with Lecithin and Tween 80®, USP**

For the general cultivation of microorganisms from environmental surfaces. Lecithin and Tween® 80 neutralize disinfectants.  
15x60mm contact plate,  
10/pk .....89408-026

## **Tryptic Soy Agar with 5% Sheep Blood**

For the general cultivation of microorganisms from environmental surfaces. 5% sheep blood in TSA base.  
15x60mm contact plate,  
10/pk ..... 89407-396



# Petri Plates (Empty, Sterile)

Hardy Diagnostics offers an extensive line of sterile Petri plates for all your media-making needs. Contact us for a complete list.

15x100mm, with stacking ring,	
500/case.....	10054-174
15x100mm, without stacking ring,	
500/case.....	10753-948



# Culture Media for Air Sampling

## **DG-18 Agar**

For the selective isolation and cultivation of xerophilic (dry loving) molds.

15x100mm plate,	
10/pk.....	89407-488

## **Malt Extract**

For the cultivation and enumeration of yeasts and molds.

15x100mm plate,	
10/pk.....	89407-712

## **Potato Dextrose Agar (PDA), USP**

For the cultivation of yeasts and molds.

15x100mm plate,	
10/pk.....	89407-826

## **SabDex (Sabouraud Dextrose) Agar**

For the cultivation of fungi.

15x100mm plate,	
10/pk.....	89407-894

## **Tryptic Soy Agar (TSA)**

For the general cultivation of microorganisms.

15x100mm plate,	
10/pk.....	89407-062
15x150mm plate,	
10/pk.....	89408-020



*Escherichia coli* (ATCC® 8739) colonies growing on TSA.

# Environmental Sampling Boot Swab

EnviroBootie™ is a collection system for the monitoring of Salmonella contamination in flock floor litter and other surfaces. This “one size fits all” shoe cover is ready-to-use and pre-moistened with skim milk. Simply remove the EnviroBootie™ from the sterile sample bag, place the boot swab over a plastic boot cover, then walk through the poultry barn. This unique design allows for highly efficient sample collection, secure transport, pre-enrichment incubation, and disposal, all in the same container! EnviroBootie™ can also be used as a sampling mitt for belts, feeders, and other recommended sampling surfaces.

- One size fits all
- Pre-Moistened

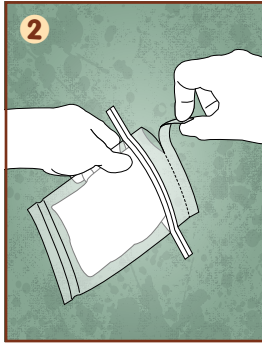
## EnviroBootie™

2 pre-moistened (2X skim milk) boot swabs  
per bag, 50/pk..... 10158-946

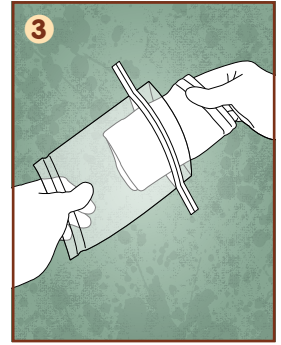
1 pre-moistened (2X skim milk) boot swab  
per bag, 100/pk..... 10158-932



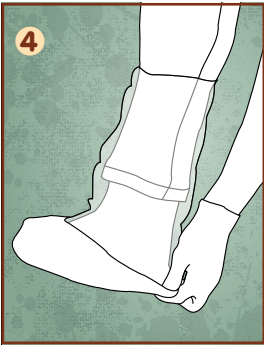
1 Slip on disposable plastic shoe cover to protect shoes and prevent cross-contamination.



2 Tear off the perforated end of the sterile sample bag.



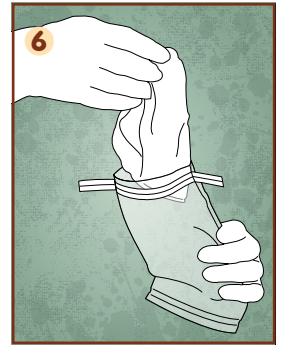
3 Remove pre-moistened EnviroBootie™ from sterile sample bag.



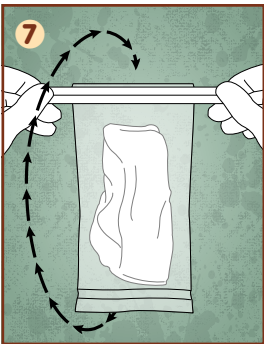
4 Place EnviroBootie™ over your plastic shoe cover.



5 Walk through your sample area.



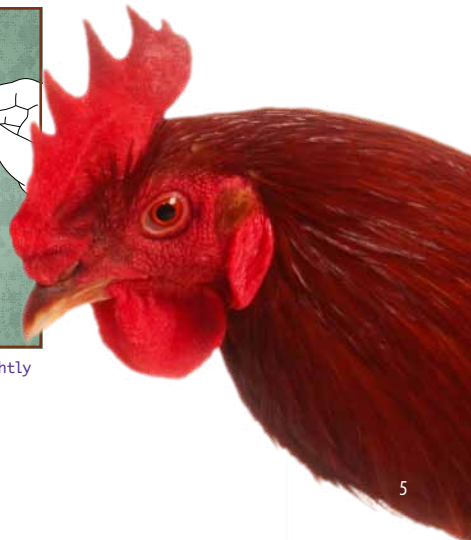
6 After collecting sample, place EnviroBootie™ back into sterile sample bag.



7 Pull the ends of the wire tabs to close the bag. Holding the bag by the tab ends, whirl the bag three complete revolutions to form a leakproof seal.



8 Fold the tabs over as tightly as possible then send to laboratory for analysis.



# Environmental Testing Swabs



Swab attached to cap

Dacron® Tip



## EnviroTrans™, Swab Kit (Pre-moistened Ready-to-use)

A ready-to-use swab and tube pre-filled with your choice of five solutions to fit your specific needs! The entire unit is terminally sterilized. Collect and transport your environmental sample with efficiency and ease. Simply remove the cap attached to the dacron swab. Collect your sample by swabbing the surface. Recap, and send to the lab. Each EnviroTrans™ tube contains broth or buffer (see listing). Excellent for detection or enumeration of microorganisms from environmental surfaces or equipment.

EnviroTrans™ Neutralizing Buffer,  
2ml, 20/bx ..... 89407-764  
5ml, 20/bx ..... 89407-766

EnviroTrans™ Lethen Broth,  
5ml, 20/bx ..... 89407-672

EnviroTrans™ Saline, 0.85%,  
0.5ml, 20/bx ..... 89407-912  
2ml, 20/bx ..... 89407-914  
5ml, 20/bx ..... 89407-916

EnviroTrans™ D/E Neutralizing Broth,  
5ml, 20/bx ..... 89407-470

EnviroTrans™ Neutralizing Saline,  
5ml, 20/bx ..... 89407-512



Self-standing Vial

## EnviroMax Plus® Environmental Sampling Swabs

Sterile, pointed pre-moistened foam tip, 50% neutralizing buffer, and 50% 0.1% peptone water with a polypropylene handle. For the collection transportation and identification of microorganisms from the environment.

25/bx.....89405-022



## PDX-LIB *Listeria* (AOAC-RI)

The easiest *Listeria* test available. This test is both reliable and inexpensive with presumptive results available within 30 hours for the most common *Listeria* spp. No sub-culturing or specimen transfers required. Compared to UVM and BLEB, this test provides superior/ equivalent recovery and faster detection of as low as 10-50 heat injured *Listeria monocytogenes* per ml within 24-30 hours of incubation. Comparable results to USDA methods. The Test is AOAC-RI approved. ENVIROSWAB™ Sampling sponges are not included.

PDX-LIB Media, 25/case .....89404-952  
EnviroMax® Swab, 25/bx.....89405-022

## PDX-SIB *Salmonella* (AOAC-RI)

The easiest environmental *Salmonella* test available. This test is both reliable and inexpensive with presumptive results available within 24-48 hours for the most common *Salmonella* spp. No sub-culturing or specimen transfers required. Simply collect your sample, inoculate the PDX-SIB media, and incubate. AOAC-RI approved. ENVIROSWAB™ sampling sponge not included.

PDX-SIB Media, 25/case .....89404-954  
EnviroMax® Swab, 25/bx.....89405-022



PDX-SIB™  
Media  
**Salmonella**,  
Cat. no.  
89404-954

PDX-LIB™  
Media  
**Listeria**,  
Cat. no.  
89404-952



EnviroMax Plus®,  
Cat. no. 89405-022

# Surface Sanitizer

## Alpet D2 Surface Sanitizer

Alpet D2 is a rapid kill, no-rinse, and highly evaporative surface sanitizer/disinfectant spray approved for food contact surfaces. Ideal for general surfaces and water sensitive equipment. Alpet D2 is a combination of isopropyl alcohol and a quaternary ammonium compound.

1.1 Liter, Each .....89423-152



Approved for food contact surfaces.

# Hand Sanitation

## AloeSafe™ Antiseptic Hand Sanitizer Gel

Ethyl alcohol gel with aloe vera, lavender oil, and vitamin E.

- Contains healing vitamin E and moisturizing aloe vera
- Does not cause drying
- Unique formula that's effective without harsh ingredients
- Does not contain propylene glycol (antifreeze additive)
- Does not contain sticky glycerin

- Does not contain estrogenic parabens
- Kills 99.9% of bacteria

2oz bottle with flip top, Each .....89423-140

4oz bottle with flip top, Each .....89423-142

16oz pump bottle, Each..... 89423-144



**The Only  
Non-Toxic  
Hand Sanitizer!**

# Sample Preparation Dilution Vials

**Prefilled  
Ready-to-use**



## Dilu-Lok™ Dilution Vials

The Dilu-Lok™ eliminates the time and money spent on preparing your own dilution vials! Our pre-filled dilution vial is designed especially for the food, dairy, and water industries. Vials are filled to 90ml or 99ml with a variety of buffering solutions. Each lot is meticulously tested for pH, sterility, and fill volume. Designed and packaged to eliminate leaking.

One handed  
easy-opening



Clarified  
Polypropylene  
so you can  
see your  
sample

### Butterfield's Phosphate Buffer

90ml fill.....	89407-110
99ml fill.....	89407-112

### Phosphate Buffer with MgCl

90ml fill.....	89407-114
99ml fill.....	89407-116

### Peptone Water 0.1% (Irradiated)

90ml fill.....	89407-106
99ml fill.....	89407-108

### Deionized Water

90ml fill.....	89407-100
99ml fill.....	89407-102

### Buffered Peptone Water

90ml fill, with 1% Tween® 20.....	89407-098
90ml fill.....	89407-096



## Flip-Lok™ Vials

Flip-Lok™ vial is suited for a wide variety of applications. Great for sample collection, and sample storage. Flip-Lid allows for easy one-handed opening. Transparent polypropylene has been clarified for a clear view of the vials contents. Sterile when unopened, this vial ensures product or sample integrity. Leak resistant technology forms a water tight seal. Economically priced! 100% Recyclable! Graduated etched lines at 90 and 99ml. 250/case.....89423-184

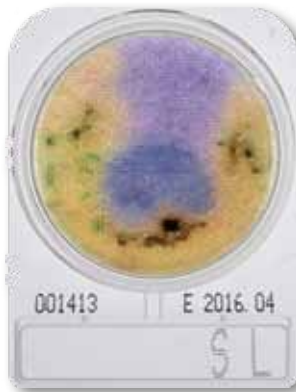


Compact Dry™ is a ready-to-use system reducing the time needed to perform microbial testing on food, beverage, meat, cosmetics, and raw materials. Place 1ml of sample onto the plate and incubate. Colonies grow and develop specific colors from chromogenic substrates. This provides for easy organism differentiation and counting.



### Compact Dry™ EC (*E. coli* and Coliforms)

Contains Magenta-Gal and X-Gluc chromogenic enzyme substrates. *E. coli* forms blue colonies, Coliforms turn red. Total coliform group count is the sum of both red and blue colonies. 100/pk.....10145-954



### Compact Dry™ SL (*Salmonella*)

For the isolation and enumeration of *Salmonella* in raw materials, finished products, or on environmental surfaces pertaining to food and related industries. 100/pk.....10145-970



### Compact Dry™ LS (*Listeria* spp)

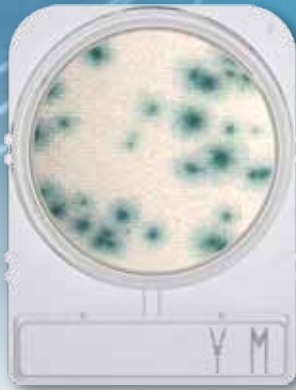
For determination of *Listeria* spp. by means of selective growth and the presumptive identification and enumeration of *Listeria* spp. 100/pk.....10789-408



### Compact Dry™ TC (Total Count)

For total viable bacterial count. Growing colonies appear red due to redox indicator tetrazolium salt. Compact Dry™ TC is AOAC, MicroVal and NordVal approved.  
100/pk.....10145-968

Manufactured for Hardy Diagnostics by  
Nissui Pharmaceutical Co., LTD.  
Compact Dry is a trademark of Nissui  
Pharmaceutical Co., LTD.



### Compact Dry™ YM (Yeast and Mold)

Yeasts and mold can be differentiated by color. The medium contains the chromogenic enzyme substrate X-Phos which turns blue with many yeasts. Molds form fluffy colonies with a characteristic color.  
100/pk.....10145-972



### Compact Dry™ XSA (Staphylococcus aureus)

For determination of *Staphylococcus aureus* by means of selective growth of *Staphylococcus* and differentiation by egg yolk reaction. *S. aureus* generates blue/yolk pigments which result in blue/blue green colonies.  
100/pk.....10145-970



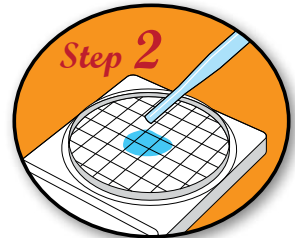
### Compact Dry™ ETB (Enterobacteriaceae)

For the isolation and quantification of *Enterobacteriaceae* in foods, cosmetics or raw materials. Enterobacteriaceae will appear magenta in color, and are easily counted.  
100/pk.....10753-986

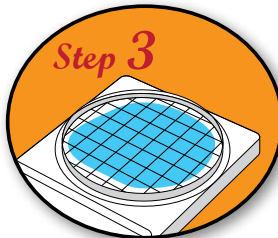
## How to use:



Remove protective cap from Compact Dry™ plate.



Drop 1ml of specimen (dilute if necessary) in the middle of dry sheet.



Specimen diffuses automatically into the plate, transforming the dry medium to gel.



Re-cap, and incubate for prescribed time. Count the number of colonies on a light box.

# HardyCHROM™

## Chromogenic Culture Media



### HardyCHROM™ ECC (*E. coli* /Coliforms)

HardyCHROM™ ECC (*E. coli*-Coliforms) is a chromogenic medium recommended for the detection, differentiation, and enumeration of *Escherichia coli* and other coliforms in food or water samples based on colony color.

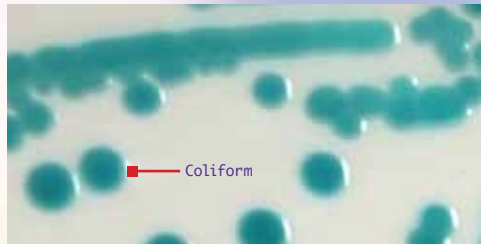
Routine testing to assess the sanitary quality of food and water is directed at the detection and enumeration of indicator organisms rather than pathogens. The coliform group of organisms is recognized as the principal indicator of unsanitary conditions. They are present in the intestinal tract of man and other animals, and non-fecal coliforms are found in many areas of the environment, including in soil and on plants.

- Allows for the detection of *E. coli* and other coliforms
- *E. coli* can be identified as pink to violet colored colonies on the plate
- Other coliform bacteria appear as turquoise colonies
- Organisms other than coliforms or *E. coli* (including approximately 4% of *E. coli* strains and most O157 strains) appear as white or colorless colonies
- Contains chromogenic substrates which allow specific microorganisms to be recognized by their colony color
- Selective agents have been added to inhibit growth of gram-positive and other non-coliform bacteria

15x100mm plate,  
10/pk..... 89407-254



*Escherichia coli* (ATCC® 25922) colonies growing on HardyCHROM™ ECC incubated aerobically for 24 hours at 35 °C.



*Klebsiella pneumoniae* (ATCC® 13883) colonies growing on HardyCHROM™ ECC incubated aerobically for 24 hours at 35 °C. Typical of all coliforms.

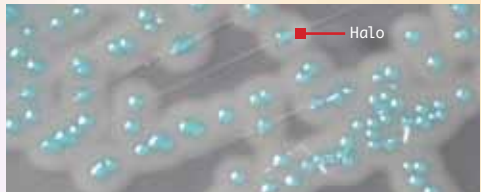
### HardyCHROM™ Listeria

HardyCHROM™ Listeria is a chromogenic medium recommended for the selective isolation, differentiation, and enumeration of *Listeria monocytogenes* from food and environmental samples by colony color and appearance.

HardyCHROM™ Listeria contains specific chromogenic substrates that result in all *Listeria* species producing turquoise colored colonies when the substrate is hydrolyzed by specific enzymes. Furthermore, this medium is able to detect the phospholipase activity (resulting in the halo effect) specific to the two pathogenic *Listeria* species: *Listeria monocytogenes* and *Listeria ivanovii*.

- While *Listeria ivanovii* is rare in clinical samples, further tests are needed to definitively differentiate between these two species
- Organisms other than *Listeria* are inhibited or grow as colorless or turquoise colonies without halos

15x100mm plate,  
10/pk..... 89407-264



*Listeria monocytogenes* (ATCC® 15313) colonies growing on HardyCHROM™ Listeria. (*Listeria ivanovii* will appear the same.)

- These two species will produce turquoise colored colonies surrounded by an opaque white halo

## HardyCHROM™ O157

HardyCHROM™ O157 is a selective and differential medium recommended for the isolation of enterohemorrhagic *E. coli* O157 from food and environmental sources. Chromogenic substances in the medium facilitate detection by color.

HardyCHROM™ O157 was developed as a medium for differentiating *E. coli* O157 from non-*E. coli* O157 based on colony color, due to the presence of specific chromogenic substrates. These chromogens are biochemical compounds that produce a visible color change when degraded by specific microbial enzymes.

- *E. coli* O157 produces purple-pink colored colonies on the plate
- Organisms other than *E. coli* O157 will be inhibited or appear as blue colonies
- Provides an initial screen intended to isolate colonies for further testing

Not for human diagnostic use.

- It is necessary to confirm isolated purple-pink colonies taken from HardyCHROM™ O157 with a latex agglutination test (Cat. no. 89407-502), or other test methods for complete identification
- 10/pk .....89407-256



*E. coli* O157 (ATCC® 35150) produces smooth purple-pink to mauve colonies at 24 hours.

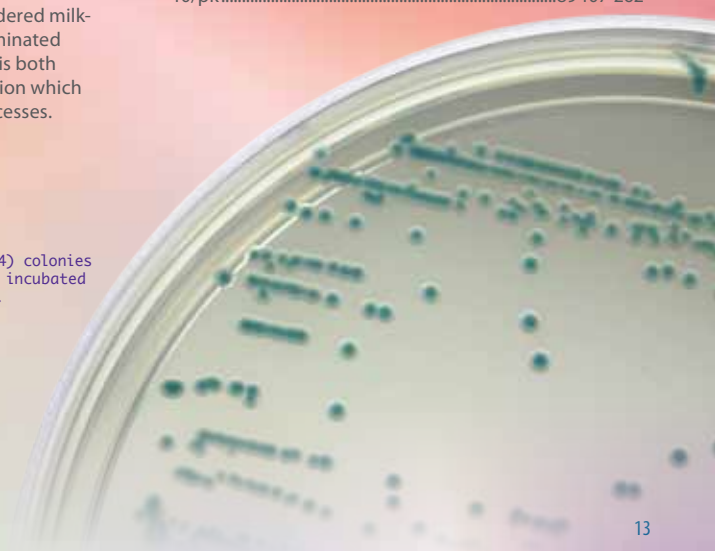
## HardyCHROM™ Sakazakii

HardyCHROM™ Sakazakii is a chromogenic medium recommended for the selective isolation and differentiation of *Cronobacter (Enterobacter) sakazakii* from other members of the *Enterobacteriaceae* family based on colony color.

*Cronobacter sakazakii* is a gram-negative, rod-shaped opportunistic pathogen associated with a rare, but life-threatening form of meningitis and necrotizing enterocolitis in neonates. The source of infection has been linked to the ingestion of powdered milk-based infant formula intrinsically contaminated by *Cronobacter sakazakii*. The organism is both thermotolerant and resistant to desiccation which enables it to survive manufacturing processes.

*Cronobacter sakazakii* (ATCC® 29004) colonies growing on HardyCHROM™ Sakazakii incubated aerobically for 24 hours at 35 °C.

- *Cronobacter sakazakii* produces smooth, turquoise colonies on HardyCHROM™ Sakazakii as a result of unique enzyme interactions with chromogenic substances
  - Other members of the *Enterobacteriaceae* family produce white or colorless colonies with or without black centers
  - All gram-positive bacteria and yeast will be inhibited on this medium
- 15x100mm plate,  
10/pk .....89407-262





*Salmonella enterica* (ATCC® 14028) colonies incubated aerobically for 24 hours at 35 °C. Typical of all *Salmonella* spp.

## HardyCHROM™ Salmonella

HardyCHROM™ Salmonella is a chromogenic medium recommended for the selective isolation and differentiation of *Salmonella* spp. from other members of the *Enterobacteriaceae* family based on colony color.

Selective agents inhibit the growth of Gram-positive organisms. Chromogenic substrates are broken down by specific microbial enzymes resulting in distinct colony color.

- *Salmonella* species use only one of the chromogens producing deep pink to magenta colored colonies.
- Bacteria other than *Salmonella* spp. may utilize the other chromogenic substrates and produce blue colonies.
- If none of the substrates are utilized, natural or white colored colonies will be present.
- *E. coli* will be partially inhibited.

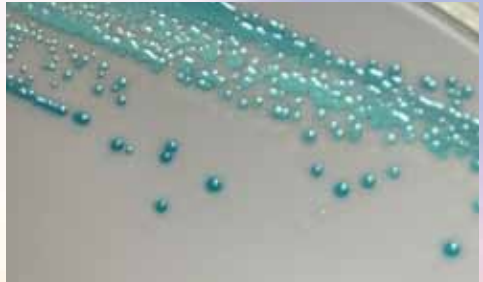
15x100mm plate, 10/pk .....89407-258

## HardyCHROM™ Staph aureus

HardyCHROM™ Staph aureus allows for the rapid and reliable detection of *Staphylococcus aureus*. This medium contains a special chromogenic mix that allows for the differentiation of *Staphylococcus* spp.

- *Staphylococcus aureus* can be identified as smooth, pink colored colonies on the plate.
- Other organisms may appear as colorless, blue or cream colonies or will be inhibited.
- *Staphylococcus saprophyticus* will appear as turquoise colored colonies.
- *Staphylococcus epidermidis* will be inhibited.

15x100mm plate, 10/pk .....89407-260



*Staphylococcus saprophyticus* (ATCC® 15305) colonies incubated aerobically for 24 hours at 35 °C.

## HardyCHROM™ Vibrio

HardyCHROM™ Vibrio was developed as a medium for differentiating *Vibrio cholerae*, *Vibrio parahaemolyticus*, and *Vibrio vulnificus* from other *Vibrios* based on colony color and fluorescence.

The shellfish pathogen *Vibrio parahaemolyticus* is differentiated from other *Vibrios* such as *Vibrio alginolyticus* by its teal coloration. The deadly pathogens *Vibrio cholerae* and *Vibrio vulnificus* are differentiated from other *Vibrios* by their magenta coloration, and from each other by the fluorescence of *Vibrio vulnificus* under UV light. \*Patent Pending.

- The only chromogenic media to differentiate *Vibrio cholerae*, *Vibrio parahaemolyticus* and *Vibrio vulnificus* on the same plate.
- Fluorogenic reaction, adds another dimension for thorough differentiation.

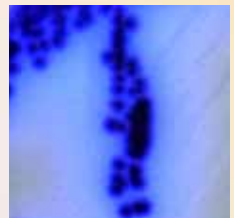
- Superior performance to TCBS:  
Greater sensitivity and specificity.
- Molecular methods are very expensive. Screen first on inexpensive HardyCHROM™ Vibrio!
- Also available in CRITERION™ Dehydrated Culture Media.

15x100mm plate, 10/pk .....Hardy Cat. no. G319

Differentiated under UV light



*Vibrio cholerae*  
(does not fluoresce)



*Vibrio vulnificus*  
(fluoresces)



# Prepared Media

## Plates, Bottles, and Tubes



### Bacillus Cereus Selective Agar

A selective medium for the detection of *Bacillus cereus*.  
15x100mm plate, 18ml fill, 10/pk ..... 89407-178

### Baird-Parker Agar

For selective isolation and enumeration of coagulase-positive staphylococci (*Staphylococcus aureus*) from food and environmental surfaces.  
15x100mm plate, 18ml fill, 10/pk ..... 89407-366

### Bile Esculin Agar (BEA)

For the detection of group D streptococci, including enterococci.  
15x100mm plate, 18ml fill, 10/pk ..... 89407-148

### Blood Agar, 5%

Tryptic Soy Agar with 5% Sheep Blood, for the cultivation of microorganisms.  
15x100mm plate, 19ml fill, 10/pk ..... 89405-024

### Brain Heart Infusion (BHI) Agar

For the cultivation of microorganisms.  
20x125mm tube, 10ml slant, 20/pk ..... 89407-376

### Brilliant Green Agar

For the selective isolation and differentiation of *Salmonella* spp.  
Brilliant Green Agar with Novobiocin,  
15x100mm plate, 10/pk ..... 89407-188  
Brilliant Green Agar,  
15x100mm plate, 18ml fill, 10/pk ..... 89407-342

### Brilliant Green Bile Broth

For the detection of coliforms in water and food. Contains a durham tube for gas detection.  
16x125mm tube with durham tube, 10ml fill, 20/pk ..... 89407-400  
20x125mm tube with durham tube, 10ml fill, 20/pk ..... 89407-398

### Brucella Agar with H & K

For the cultivation of anaerobic bacteria.  
15x100mm plate, 19ml fill, 10/pk ..... 89405-032

### Brucella Broth

Recommended as a general purpose broth for the cultivation of microorganisms.  
13x100mm tube, 1ml fill, 20/pk ..... 89407-404

### Buffered Listeria Enrichment Broth (BLEB) Base BAM Formulation

Requires selective supplement K183. Buffered Listeria Enrichment Broth Base, BAM formula.  
354ml wide mouth jar, 225ml fill, 12/pk ..... 89407-422

### Buffered Listeria Enrichment Broth (BLEB) Selective Supplement

For use as a supplement with Buffered Listeria Enrichment Broth Base (BAM Formulation), Cat. no. 89407-422.  
16x100mm tube, 3.4ml fill, 20/pk ..... 89407-394

### Buffered Peptone Water

A pre-enrichment used for increasing the recovery of injured *Salmonella* spp. from food and other samples prior to selective enrichment and isolation.  
16x125mm tube, 9ml fill, 20/pk ..... 89407-436  
16x125mm tube, 10ml fill, 20/pk ..... 89407-438  
**Tubes**  
16x125mm tube, 9ml fill, 20/pk ..... 89407-436  
16x125mm tube, 10ml fill, 20/pk ..... 89407-438

## Butterfield Phosphate Buffer

For preparation of dilutions for plate count and other laboratory tests.

### Polycarbonate Bottles

500ml bottle, 250ml fill, 10/pk.....	89407-810
500ml bottle, 400ml fill, 10/pk.....	89407-418
500ml bottle, 450ml fill, 10/pk.....	89407-406
500ml bottle, 500ml fill, 10/pk.....	89407-414

### Polypropylene Bottles

125ml bottle, 100ml fill, 12/pk.....	89407-440
--------------------------------------	-----------

### Jar, Polycarbonate

354ml wide mouth jar, 225ml fill, 10/pk.....	89498-946
---	-----------

### Tubes, Polypropylene

13ml, polypropylene tube, screw cap, 9ml fill 20/pk.....	89407-412
---	-----------

### Tubes, Glass

16x125mm tube, 9.9ml fill, 20/pk.....	89407-410
16x125mm tube, 9ml fill, 20/pk.....	89407-408
20x125mm tube, 9ml fill, 20/pk.....	89407-416

### Dilu-Lok™ II Dilution, Flip-top Vial, polypropylene

145ml bottle, 90ml fill, 50/bx.....	89407-110
145ml bottle 99ml fill, 50/bx.....	89407-112

See page 9 for complete selection of Dilu-Lok™

## Campy Cefex Agar, Modified

For selective isolation of cephalothin-resistant *Campylobacter* spp. such as *Campylobacter jejuni*, *Campylobacter coli*, and *Campylobacter lari*.  
15x100mm plate, 18ml fill, 10/pk..... 89405-026

## Campylobacter (CVA) Agar

For selective isolation of *Campylobacter* species, particularly *Campylobacter jejuni* and *Campylobacter coli*, from food samples. CVA (Cefoperazone, Vancomycin, Amphotericin B)  
15x100mm plate, 18ml fill, 10/pk..... 89405-034

## CIN Agar

Cefsulodin-Irgasan-Novobiocin (CIN) Agar, for for the isolation of *Yersinia*, and *Aeromonas*.  
15x100mm plate, 18ml fill, 10/pk..... 89407-218

## Columbia Blood Agar

A general growth medium for cultivation and hemolytic determination of fastidious and non-fastidious microorganisms.  
15x100mm plate, 17ml fill, 10/pk..... 89405-028  
15x100mm plate, 17ml fill, 100/bx..... 89405-030

## Cooked Meat Medium

For cultivation of aerobic, anaerobic, and microaerophilic organisms.  
20x125mm tube, 15ml fill, 20/pk..... 89407-464

## CT-SMAC for *E. coli* O157

For selection and differentiation of enterohemorrhagic *E. coli* O157. Reduces the rate of false positives found on regular MacConkey with Sorbitol plates. This new formulation, used by many public health laboratories, includes addition of cefixime and tellurite for greater selectivity of *E. coli* O157.  
15x100mm plates, 18ml fill, 10/pk..... 89407-158

## D/E Neutralizing Media

For neutralizing antiseptics and disinfectants, as well as to detect organisms remaining after treatment. This media is specially suited for environmental sampling where neutralization of the chemical is important in determining bactericidal activity.  
15x100mm plate, 18ml fill, 10/pk..... 89407-230  
16x125mm tube, 10ml fill, 20/pk..... 89407-472  
1L polycarbonate bottle, 750ml fill,  
10/pk..... 89407-474  
180ml polycarbonate wide mouth jar, 90ml fill,  
12/pk..... 10135-902  
473ml boston round bottle, 400ml fill,  
12/pk..... 89407-480



## Dichloro Rose Bengal Chloram Agar (DRBCA)

For use in the cultivation of yeasts and molds associated with food, dietary supplements and other matrices.

15x100mm plate, 26ml fill, 10/pk..... 89407-492

## EC Medium

For the detection of fecal coliforms.

16x125mm tube with durham tube,  
10ml fill, 20/pk ..... 89407-496

20x125mm tube with durham tube,  
10ml fill, 20/pk ..... 89407-640

## EC Medium with MUG

For the detection of *Escherichia coli* in water and food samples by fluorogenic means.

Read with a fluorescent lamp (long wave, 366nm).

20x125mm tube with durham tube,  
10ml fill, 20/pk ..... 89407-500

## Eosin Methylene Blue (EMB) Agar Levine

For use as a selective and differential medium for the isolation of gram-negative bacilli (including coliform organisms and enteric pathogens).

15x100mm plate, 18ml fill, 10/pk ..... 89407-238

## Fraser Broth Base

For the selective enrichment of *Listeria* spp. (without ferric ammonium citrate)

### Tube

Fraser broth, modified,  
16x125mm tube, 10ml fill, 20/pk..... 89407-598

### Bottle

500ml polycarbonate bottle, 225ml fill,  
Each ..... 10127-498  
10/pk ..... 10127-492

## Fluid Thioglycollate Medium, USP

For the cultivation of aerobic, microaerophilic, and anaerobic microorganisms.

### Tube

20x125mm tube, 10ml fill, 20/pk ..... 10127-492

Fluid Thioglycollate with BE (Beef Extract),  
16x125mm tube, 10ml fill, 20/pk..... 10159-876

### Bottles and Jars

Fluid Thioglycollate without Indicator,  
120ml boston round glass bottle, 100ml fill,  
20/pk ..... 89407-972

236ml wide mouth glass jar, 100ml fill,  
12/pk ..... 89407-552

200ml serum bottle, 125ml fill, 10/pk ..... 89407-581

## Hektoen Enteric (HE) Agar

For the selective isolation of pathogenic Gram-negative enteric bacteria, such as *Salmonella* spp. and *Shigella* spp.

15x100mm plate, 18ml fill, 10/pk ..... 89407-338

15x100mm quad-plate,  
5ml fill per section, 10/pk ..... 89497-610

## Inhibitory Mold Agar

Inhibitory Mold Agar is recommended for the selective isolation of fungi.

15x100mm plate, 26ml fill, 10/pk ..... 89407-612

50ml HardyFlask™, 12ml fill, 20/pk ..... 89407-616

20x125mm tube, 10ml fill, 20/pk..... 89407-618

Inhibitory Mold Agar with Gentamicin,  
15x100mm plate, 26ml fill, 10/pk ..... 89407-614

*Shigella flexneri*  
(ATCC® 12022) colonies  
growing on XLD Agar,  
Cat. no. 89407-340.

## KIA Medium

Kligler Iron Agar (KIA) is recommended for use in differentiating certain members of the *Enterobacteriaceae* by demonstrating hydrogen sulfide production and the fermentation of dextrose and lactose.

16x125mm tube, 8ml slant, 20/pk..... 89407-626  
13x100mm tube, 4.5ml slant,  
20/pk..... 89407-628

## Lactobacilli MRS Agar

For the selective isolation and cultivation of *Lactobacillus* spp.,

15x100mm plate, 18ml fill, 10/pk .....89407-144

## Lactose Broth

For the detection of coliforms in food, dairy, and water. It can also be used to pre-enrich samples for the recovery of *Salmonella* species.

### Polycarbonate Bottle

500ml bottle, 225ml fill, 10/pk.....89407-646

### Jar

236ml wide mouth jar, 90ml fill,  
12/pk ..... 10135-870

236ml wide mouth jar, 99ml fill,  
12/pk.....10135-908

354ml wide mouth glass jar, 225ml fill,  
12/pk.....89407-648

## Lactose Broth with Durham Tube

Used as a pre-enrichment medium for the cultivation of coliforms and *Salmonella* spp. in water, food, and dairy products.

Single Strength, 16x125mm tube, 10ml fill,  
20/pk.....89407-632

Double Strength, 16x125mm tube, 10ml fill,  
20/pk.....89407-640

## Lauryl Tryptose Broth

For detecting coliform organisms in water, wastewater, and foods.

### Single Strength

20x125mm tube with durham tube,  
10ml fill, 20/pk .....89407-684

16x125mm tube with durham tube,  
10ml fill, 20/pk .....89407-688

### Double Strength

20x125mm tube with durham tube,  
10ml fill, 20/pk .....89407-686



*Escherichia coli* (ATCC® 25922)  
colonies growing on MacConkey  
Agar, Cat. no. 89407-268.

## Listeria Enrichment Broth

For the selective enrichment of *Listeria* monocytogenes.

118ml glass bottle, 99ml fill, 20/pk..... 89407-678

## LPM Agar

Lithium Chloride Phenylethanol Moxlactam Plating Agar (LPM), for the selective isolation of *Listeria monocytogenes*.

15x100mm plate, 10/pk .....89407-682

## Lysine Iron Agar, Modified

For use in differentiating certain members of the *Enterobacteriaceae*, especially *Salmonella* species, by demonstrating hydrogen sulfide production and the decarboxylation or deamination of lysine.

15x100mm plate, 18ml fill, 10/pk .....89407-352

## m FC Media with 1% Rosolic Acid

For the isolation and enumeration of fecal coliforms using membrane filtration, based on lactose fermentation. Contains 1% Rosolic Acid.

15x100mm plate, 18ml fill, 10/pk .....89407-154

## m HPC Agar

For enumeration of heterotrophic organisms in water samples using membrane filtration.

15x100mm plate, 20ml fill, 10/pk .....89407-212



### MacConkey Agar

A selective and differential medium for the isolation of gram-negative bacilli (including coliform organisms and enteric pathogens), on the basis of lactose fermentation. 15x100mm plate, 19ml fill, 10 pkg .....89407-268  
16x125mm, 6.5ml slant, 20/pk .....89407-704

### MacConkey Agar with MUG

For presumptive identification of *E. coli*. 15x100mm plate, 18ml fill, 10/pkg .....89407-274

### MacConkey Agar with Sorbitol (SMAC)

A selective and differential medium for the detection of enterohemorrhagic *Escherichia coli* O157. 15x100mm plate, 18ml fill, 10/pkg .....89407-272

### Mannitol Yolk Polymyxin (MYP)

Mannitol Yolk Polymyxin (MYP) Agar is recommended for the enumeration, detection, and isolation of *Bacillus cereus* in food. 15x100mm plate, 18ml fill, 10/pkg .....89407-168

### Mannitol Salt Agar

For the selective isolation and differentiation of *Staphylococcus* spp. based on high salt content and mannitol fermentation. 15x100mm plate, 18ml fill, 10/pkg .....89407-278

### MIO Medium

Motility, Indole, Ornithine (MIO) for the detection of motility, indole production, and ornithine-decarboxylase activity of enteric bacilli. 16x100mm tube, 6.5ml deep, 20/pk .....89407-736  
13x100mm tube, 4ml deep, 20/pk .....89407-738

### Motility Test Medium

Motility Test Medium with and without Triphenyltetrazolium Chloride (TTC) is recommended for the detection of motility in gram-negative enteric bacilli. TTC is added to enhance visualization of bacterial growth. 16x100mm tube, 8ml deep, 20/pk .....89407-752  
16x100mm tube, 8ml deep, 20/pk .....89407-754

### MR-VP Broth

(Methyl Red and Voges-Proskauer) For identification of gram-negative bacilli. 16x100mm tube, 2ml fill, 20/pk .....89407-756  
16x100mm tube, 5ml fill, 20/pk .....89407-758

### Neomycin Anaerobic Blood Agar

(Blood Agar with 5% Sheep Blood, Hemin, Vitamin K, and Neomycin) For the selective isolation of anaerobic bacteria. 15x100mm plate, 17ml fill, 10/pkg .....89405-036

### Nitrate Broth

For the detection of nitrate reduction and indole production (Indole Nitrate only) in bacteria. Contains a durham tube for gas detection. Indole Nitrate Broth, 16x100mm tube with durham tube, 6ml fill, 20/pk .....89407-608  
Nitrate Broth, 16x100mm tube with durham tube, 6ml fill, 20/pk .....89407-770

### Nutrient Agar

For the cultivation of non-fastidious microorganisms. 15x100mm plate, 26ml fill, 10/pkg .....89407-782  
16x100mm tube, 6.5ml slant, 20/pk .....89407-784

### Orange Serum Agar

For cultivation and enumeration of aciduric, putrefactive microorganisms which include *Lactobacillus* spp., *Bacillus* spp., *Leuconostoc* spp., *Clostridium* spp., and yeast and molds in fruit juices and fruit juice concentrates, especially citrus fruits. 15x100mm plate, 18ml fill, 10/pkg .....89407-200

### Oxford, Medium, Modified

For selective isolation and differentiation of *Listeria monocytogenes*. 15x100mm plate, 18ml fill, 10/pkg .....89407-326

### PALCAM Medium

For isolation and cultivation of *Listeria* species from foods. 15x100mm plate, 19ml fill, 10/pkg .....89407-172



*Staphylococcus aureus* (ATCC® 25923)  
colonies growing on HardyCHROM™  
Staph aureus, Cat. no. 89407-260.

### Phenol Red Broth with Dextrose

For the differentiation of microorganisms by carbohydrate fermentation. Contains a Durham tube for gas detection.

16x125mm tube with Durham tube,  
10ml fill, 20/pk..... 10124-528

### Potato Dextrose Agar

Potato Dextrose Agar (PDA) is recommended for use in the cultivation of yeasts and mold and for the inducement of sporulation.

**Plate**  
15x100mm plate, 26ml fill, 10/pk..... 89407-826  
15x150mm plate, 68ml fill, 10/pk..... 89407-830

**Tube**  
20x125mm tube, 10ml slant, 20/pk..... 89407-832  
20x125mm tube, 18ml deep, 20/pk..... 89407-834

**Bottle**  
236ml bottle, 200ml fill, 12/pk..... 89407-838

### Potato Dextrose Agar with TA (Tartaric Acid)

For the cultivation and enumeration of fungi.  
15x100mm plate, 28ml fill, 10/pk..... 89407-836

### Rappaport-Vassiliadis (Broth)

Rappaport-Vassiliadis Broth is used in the detection and isolation of *Salmonella* spp. in food products.  
16x125mm tube, 10ml fill, 20/pk..... 89407-854

### Rose Bengal Agar with Chloramphenicol

For selective isolation and enumeration of fungi.  
15x100mm plate, 24ml fill, 10/pk..... 89407-862

### SabDex (Sabouraud Dextrose) Agar

For the cultivation of fungi and yeasts.  
**Plate**  
15x100mm plate, Emmon's, 26ml fill,  
10/pk..... 89407-890  
15x100mm plate, 26ml fill, 10/pk..... 89407-894  
15x150mm plate, 70ml fill, 10/pk..... 89407-880

**Tube**  
20x125mm pour tube, 18ml deep,  
20/pk..... 89407-906  
20x125mm tube, 10ml slant, 20/pk..... 89407-896

**Bottles**  
473ml Boston round glass bottle, 200ml fill, USP,  
12/pk..... 89407-868  
473ml Boston round glass bottle, 400ml fill, USP,  
12/pk..... 89407-872  
500ml polycarbonate bottle, 200ml fill, USP,  
10/pk..... 89407-874  
500ml polycarbonate bottle, 400ml fill,  
10/pk..... 89407-892  
500ml polycarbonate bottle, 500ml fill, USP,  
10/pk..... 89407-874

### SabDex Agar with Lecithin and Tween® 80

For isolation and cultivation of fungi, and the neutralization of disinfectants. Germicidal or disinfectant residue is neutralized by the addition of Lecithin and Tween® 80.

#### Plate

15x100mm plate, 26ml fill, 10/pk..... 89407-898

#### Tube

20x125mm pour tube, 18ml deep,  
20/pk..... 89407-904

#### Bottle

500ml polycarbonate bottle, 400ml fill,  
10/pk..... 89407-900  
473ml boston round glass bottle, 400ml fill,  
12/pk..... 89407-902

### Selenite Cystine Broth

For the selective enrichment of *Salmonella* spp. Cystine enhances growth of *Salmonella* spp.

16x125mm tube, 10ml fill, 20/pk..... 89407-920

### SIM Medium

Sulfide-Indole-Motility (SIM), for identification of gram-negative bacilli based on sulfide production, indole formation, and motility.

16x100mm tube, 8ml deep fill,  
20/pk..... 89407-924

### Simmons Citrate Agar

For the detection of citrate utilization of gram-negative enteric bacilli.

16x100mm tube, 10ml fill slant,  
20/pk..... 89407-926

### Standard Methods Agar

Plate Count Agar, for the cultivation and enumeration of microorganisms in dairy, food, and water.

15x100mm plate, without label, 18ml fill,  
10/pk..... 89407-324  
473ml glass bottle, 400ml fill, 12/pk..... 89407-940  
20x125 pour tube, 18ml deep fill,  
20/pk..... 89407-938  
118ml boston round glass bottle, 100ml fill,  
20/pk..... 89407-944  
236ml glass bottle, 200ml fill, 12/pk..... 89407-942

### Standard Methods Agar with BCP (Bromcresol Purple)

A non-selective medium recommended for the growth, enumeration and differentiation of acid-producing bacteria. This medium is recommended by the American Public Health Association (APHA) to recover sub-lethally injured lactobacilli from pasteurized dairy products.

15x100mm plate, 18ml fill, 10/pk..... 89407-164

### Sterile Del Water

Deionized water, for the preparation of dilutions and suspensions.

125ml polypropylene bottle, 100ml fill,  
12/pk..... 89407-948

### TCBS Agar

Thiosulfate Citrate Bile Sucrose, for selective isolation of pathogenic vibrios.

15x100mm plate, 18ml fill, 10/pk..... 89407-328

### Tetrathionate Broth Base

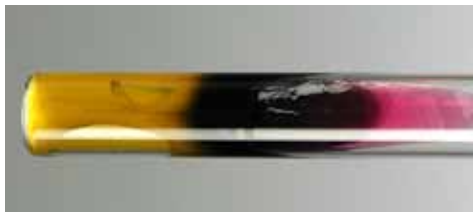
For selective enrichment of *Salmonella* spp. Tetrathionate Broth Base, use with Iodine-Iodide Solution, Cat. no. 89407-624.

16x125mm tube, 10ml fill, 20/pk..... 89407-968  
1L Polycarbonate bottle, 1,000ml fill,  
10/pk..... 89407-970  
Iodine-Iodide Solution, 59ml glass bottle,  
50ml fill, Each..... 89407-624

### Tetrathionate Broth with Brilliant Green

For the selective enrichment of *Salmonella* spp. Use with iodine-iodide solution, Cat. no. 89407-624.

16x125mm tube, 10ml fill, 20/pk..... 89408-136



*Salmonella enterica* (ATCC® 14028) growing in Kligler Iron Agar, Cat. no. 89407-626.

## Tryptic Soy Agar (TSA)

For general cultivation of microorganisms.

### Plate

15x100mm plate, 18ml fill, 10/pk.....	89407-330
15x100mm plate, 18ml fill, 100/pk.....	89407-334
15x150mm plate, 69ml fill, 10/pk.....	89408-020
15x100ml plate, without label, 23ml fill, 10/pk.....	89407-336
TSA with Lecithin and Tween® 80, 15x100mm plate, 20ml fill, USP, 10/pk.....	89407-290

### Bottle

118ml glass bottle, 150ml fill, 20/pk.....	89408-000
500ml polycarbonate bottle, 500ml fill, 10/pk.....	89408-008
TSA with Lecithin and Tween® 80, 473ml polycarbonate bottle, 400ml fill, 10/pk.....	89408-032

### Tube

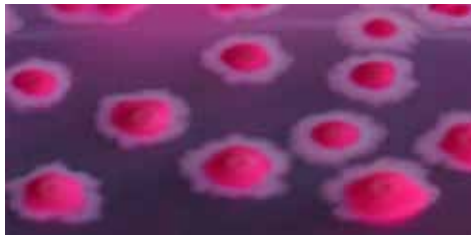
TSA with Lecithin and Tween® 80, 20x125mm pour tube, 18ml deep, 20/pk.....	89408-036
TSA, 16x100mm tube, 6.5ml slant, 20/pk.....	89408-022
TSA, 20x125mm pour tube, 18ml deep, 20/pk.....	89408-016

## Tryptic Soy Broth (TSB) Media

For cultivation of microorganisms.

### Bottles

59ml boston round glass bottle, 50ml fill, USP, 24/pk.....	89408-094
100ml serum bottle with flip seal, unlabeled, 100ml fill, 20/pk.....	89408-050
118ml boston round glass bottle, 100ml fill, USP, 20/pk.....	89408-046
236ml boston round glass bottle, 160ml fill, USP, 12/pk.....	89407-990
473ml boston round glass bottle, 400ml fill, USP, 12/pk.....	89408-084
TSB with 0.1% Tween® 80, 473ml glass bottle, 400ml fill, 12/pk.....	89408-122
500ml glass bottle, 500ml fill, USP, Each.....	89408-086



Violet Red Bile Agar, Cat. no. 89407-346.

### Jars

236ml polycarbonate wide mouth jar, 90ml fill, 12/pk.....	10135-866
236ml polycarbonate wide mouth jar, 25ml fill, 12/pk.....	10135-876
Double strength, 180ml polycarbonate wide mouth jar, 50ml fill, 12/pk.....	10135-874
TSB with Lecithin and Tween® 20, 236ml polycarbonate wide mouth jar, 100ml fill, 12/pk.....	10135-882
TSB 0.5% Lecithin, 4.0% Tween® 20, 236ml polycarbonate wide mouth jar, 90ml fill, 12/pk.....	10135-878
500ml polycarbonate wide mouth bottle, 225ml fill, USP, 10/pk.....	89408-070

### Tubes

13x100mm tube, 1ml fill, 20/pk.....	89408-062
13x100mm tube, 2ml fill, 20/pk.....	89408-076
13x100mm tube, 3ml fill, 20/pk.....	89408-080
13x100mm tube, 5ml fill, 20/pk.....	89408-102
16x100mm tube, 2ml fill, 20/pk.....	89408-074
16x100mm tube, 5ml fill, 20/pk.....	89408-100
16x100mm tube, 9ml fill, 20/pk.....	10145-990
16x125mm tube, 10ml fill, 20/pk.....	89408-052
20x125mm tube, 15ml fill, 20/pk.....	10127-496
TSB with Lecithin and Tween® 80, 20x125mm tube, 9ml fill, 20/pk.....	10127-494

## Tryptone Glucose Extract Agar

For cultivation and maintenance of bacteria.

15x100mm plate, 18ml fill, 10/pk.....	89407-142
---------------------------------------	-----------



### Triple Sugar Iron (TSI) Agar

For identification of gram-negative bacilli.

13x100mm tube, 4ml slant, 20/pk ..... 89408-130

16x125mm tube, 8ml slant, 20/pk ..... 89408-134

### Tween® 80

General purpose reagent.

236ml wide mouth glass jar, 5ml fill, Each..... 89408-144

### UVM Broth

For selective cultivation of *Listeria monocytogenes*.

500 ml polypropylene bottle, 225ml fill,

10/pk ..... 89408-148

500 ml polypropylene bottle, 500ml fill,

10/pk ..... 89408-150

### Violet Red Bile Agar

For the detection and enumeration of coliforms in food, water, and dairy products.

15x100mm plate, 18ml fill, 10/pk ..... 89407-346

236ml boston round glass bottle, 200ml fill,

12/pk ..... 89408-164

### Vogel and Johnson Agar

For selective isolation of coagulase-positive, mannitol-positive *Staphylococcus aureus*.

15x100mm plate, 19ml fill, 10/pk .....89407-208

### XLD Agar, USP

Xylose Lysine Deoxycholate, for selective isolation of pathogenic enteric gram-negative bacteria.

15x100mm plate, 18ml fill, 10/pk ..... 89407-340

### XLT4 Agar

For selective isolation of non-typhi *Salmonella* spp. from environmental samples and food.

15x100mm plate, 18ml fill, 10/pk .....89407-184

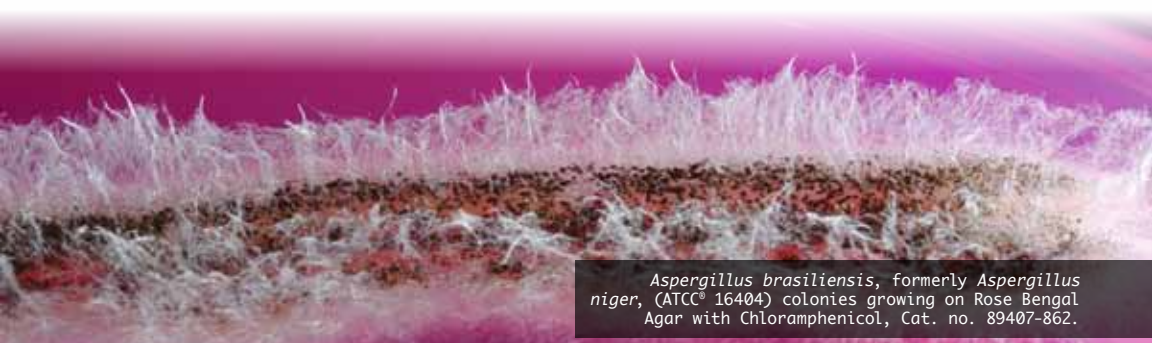


Hardy Diagnostics also manufactures a complete line of Dehydrated Culture Media called CRITERION™.

### Yeast and Mold Agar (YM)

For cultivation and enumeration of yeasts and molds.

15x100mm plate, 18ml fill, 10/pk .....89407-124



*Aspergillus brasiliensis*, formerly *Aspergillus niger*, (ATCC® 16404) colonies growing on Rose Bengal Agar with Chloramphenicol, Cat. no. 89407-862.



# Agar Plates for Membrane Filtration

15x60mm Plates

## A8 for Mycoplasma

For the selective isolation of *Mycoplasma hominis* and *Ureaplasma urealyticum*.  
11ml fill, 10/pk.....89407-126

## Barney Miller Medium

For the cultivation of microorganisms significant in the brewing industry.  
15ml fill, 10/pk ..... 89407-368

## Corn Meal Agar with Tween

For the cultivation of fungi. Induces chlamydospore formation by *Candida* spp. 13ml fill, 10/pk .....89407-134

## KF Streptococcus Agar

For the selective isolation and enumeration of fecal streptococci (including *Enterococcus*).  
15ml fill, 10/pk .....89407-246

## Lactobacilli MRS Agar

For the isolation, enumeration, and cultivation of *Lactobacillus* spp.  
12ml fill, 10/pk .....89407-214

## Lactobacilli MRS with Cyclohexamide

For the selective isolation and cultivation of *Lactobacillus* spp. in beer.  
11ml fill, 10/pk.....89407-196

## mEI Agar

For the selective chromogenic detection and enumeration of enterococci in water.  
11ml fill, 10/pk.....89407-150

## m Endo LES Agar

For the enumeration of coliforms from water specimens. 11ml fill, 10/pk.....89407-156

## m FC with 1% Rosolic Acid

For the isolation and enumeration of fecal coliforms using membrane filtration, based on lactose fermentation.  
12ml fill, 10/pk .....89407-152

## m HPC Agar

For the enumeration of heterotrophic organisms in water. 11ml fill, 10/pk.....89407-694

## m PA Agar

For the cultivation and enumeration of *Pseudomonas aeruginosa* in water.  
11ml fill, 10/pk.....89407-160

## m-PA-C Agar

For the selective recovery and enumeration of *Pseudomonas aeruginosa* in water.  
11ml fill, 10/pk.....89407-174

## Modified m TEC Agar

For selective chromogenic differentiation and enumeration of *Escherichia coli* in water.  
11ml fill, 10/pk.....89407-136

## Nutrient Agar with MUG

For the detection and enumeration of *E. coli* in water.  
11ml fill, 10/pk.....89407-140

## Orange Serum Agar

For the cultivation and enumeration of aciduric bacteria and fungi.  
11ml fill, 10/pk.....89407-792

## Potato Dextrose Agar

For the cultivation and enumeration.  
13ml fill, 10/pk .....89407-824

### PPLO Selective Agar

For the selective isolation of pleuralopneumonia-like organisms, especially *Mycoplasma pneumoniae*.  
11ml fill, 10/pk.....89407-130

### Pseudomonas Isolation

For the selective isolation of *Pseudomonas aeruginosa*.  
11ml fill, 10/pk.....89407-166

### R2A Agar

For the detection of heterotrophic bacteria in water. 11ml fill, 10/pk.....89407-128

### Sabdex Agar with G & C

For the selective cultivation of fungi and dermatophytes. 12ml fill, 10/pk.....89407-180

### Skim Milk Agar

For the cultivation and differentiation of microorganisms based on proteolytic activity.  
11ml fill, 10/pk.....89407-162

### SP4 Agar with Arginine

For the selective cultivation and differentiation of *Mycoplasma* species based on the ability to utilize arginine.  
11ml fill, 10/pk.....89407-266

### SP4 Agar with Glucose

For the selective cultivation and differentiation of the mycoplasmas; including *Mycoplasma hominis*, *Mycoplasma pneumoniae*, and *Ureaplasma urealyticum*.  
11ml fill, 10/pk.....89406-916

### Tryptic Soy Agar Plate

For use as a general growth medium for the isolation and cultivation of microorganisms.  
12ml fill, 10/pk.....89407-176

### Universal Beer Agar with Cyclohexamide

For the selective isolation and cultivation of microorganisms significant in the brewing industry.  
15ml fill, 10/pk.....89407-202

### WL Differential Medium

For the isolation of bacteria in brewing and fermentation processes.  
11ml fill, 10/pk.....89407-182

### WL Nutrient Agar with Gentamicin and Streptomycin

For the cultivation of yeast and mold in the fermentation process. 12ml fill, 10/pk .....89407-206

### XLT-4 Agar

For the selective isolation of non-typhi *Salmonella* spp.  
7ml fill, 10/pk.....89407-248

R2A Agar, Cat. no. 89407-128





# CRITERION™

DEHYDRATED CULTURE MEDIA

## Dehydrated Culture Media

Hardy Diagnostics' dehydrated culture media, CRITERION™, is formulated to meet or exceed the highest quality standards. Choose from 250 standard formulas or request custom blending to your specifications. The innovative packaging designs and overall reliability make CRITERION™ the logical choice for culture media in your laboratory.

Product (Numbers indicate supplements are needed)	2L Mylar® Zip-Bag	500gm Bottle	2kg Bucket	10kg Bucket
A-1 Medium	89406-404	89406-406	89406-408	89406-410
Bacillus Cereus Agar Base <sup>1,2</sup>	89405-096	89405-098	89405-100	89405-102
Baird-Parker Agar Base <sup>3</sup>	89405-104	89405-106	89405-108	89405-110
Bismuth Sulfite Agar	89405-192	89405-194	89405-196	89405-198
Brilliant Green Agar	89405-208	89405-210	89405-212	89405-214
Brilliant Green Agar, Modified	89406-752	89406-754	89406-756	89406-758
Brilliant Green Bile Broth	89405-216	89405-218	89405-220	89405-222
Brilliant Green Bile Broth with MUG	89405-224	89405-226	89405-228	89405-230
Buffered Listeria Enrichment Broth Base	89406-532	89406-534	89406-536	89406-538
Buffered Peptone Water	89405-248	89405-250	89405-252	89405-254
Buffered Peptone Water (Modified)	89405-734	89405-736	89405-870	89405-738
Campylobacter Agar Base <sup>4</sup>	89405-258	89405-260	89405-262	89405-264
Cetrimide Selective Agar Base	89405-274	89405-276	89405-278	89405-280
CLED Agar	89405-290	89405-292	89405-294	89405-296
Corn Meal Agar	89405-322	89405-324	89405-326	89405-328
D/E Neutralizing Agar, Modified	89405-338	89405-340	89405-342	89405-344
D/E Neutralizing Broth	89406-308	89406-310	89406-312	89406-314
Dextrose Tryptone Agar	89405-386	89405-388	89405-390	89405-392
EC Medium	89405-420	89405-422	89405-424	89405-426
EC Medium Base, Modified <sup>5</sup>	89406-678	89406-680	89406-682	89406-684
EC Medium with MUG	89405-412	89405-414	89405-416	89405-418
Half Fraser Broth Base	—	89406-644	89406-646	89406-648
Hektoen Enteric (HE) Agar	89405-480	89405-482	89405-484	89405-486
Kligler Iron Agar	89405-512	89405-514	89405-516	89405-518
Lactobacilli MRS Broth	89405-520	89405-522	89405-524	89405-526
Lactobacillus Selective Agar Base	89405-596	89405-598	89405-600	89405-602
Lactose	89405-536	89405-538	89405-540	89405-542
Lactose Broth	89405-528	89405-530	89405-532	89405-534
Lauryl Tryptose Broth	89405-544	89405-546	89405-548	89405-550
Lauryl Tryptose Broth with MUG	89405-552	89405-554	89405-556	89405-558
Letheen Agar	89406-300	89406-302	89406-304	89406-306
Letheen Agar, Modified	89406-560	89406-562	89406-564	89406-566
Letheen Broth	89405-580	89405-582	89405-584	89405-586

Product (Numbers indicate supplements are needed)	2L Mylar® Zip-Bag	500gm Bottle	2kg Bucket	10kg Bucket
Letheen Broth Modified	89406-460	89406-462	89406-464	89406-466
Listeria Enrichment Broth	89405-588	89405-590	89405-592	89405-594
Listeria Enrichment Broth, Modified	89405-740	89405-742	89405-744	89405-746
LBS (Lactobacillus Select) Agar Base	89405-596	89405-598	89405-600	89405-602
m FC Agar Base	89405-684	89405-686	89405-688	89405-690
m FC Broth Base	89406-724	89406-726	89406-728	89406-730
m Green Yeast and Fungi Broth	89406-380	89406-382	89406-384	89406-386
m PA Agar Base	89406-600	89406-602	—	—
m PA-C Agar	89406-604	89406-606	89406-608	89406-610
mTEC Agar	89406-512	89406-514	89406-516	89406-518
Modified Plate Count Agar	89406-716	89406-718	89406-720	89406-722
Nutrient Agar	89405-784	89405-786	89405-788	89405-790
Orange Serum Agar	89406-364	89406-366	89406-368	89406-370
Oxford Listeria Agar Base	89405-824	89405-826	89405-828	89405-830
Pancreatic Digest of Casein (Casein Peptone)	89405-832	89405-834	89405-836	89405-838
Plate Count Agar, Modified	89406-716	89406-718	89406-720	89406-722
Potato Dextrose Agar (PDA)	89405-898	—	89405-900	89405-902
Presence-Absence Broth	89405-904	89405-906	89405-908	89405-910
R2A Agar	89405-948	89405-950	89405-952	89405-954
SabDex with Lecithin and Tween*	89405-990	89405-992	89405-994	89405-996
Selenite Cystine Broth	89406-022	89406-024	89406-026	89406-028
Standard Methods Agar	89406-062	89406-064	89406-066	89406-068
TAT Broth Base <sup>6</sup>	89406-102	89406-104	89406-106	89406-108
Tetrathionate Broth Base <sup>7</sup>	89406-126	89406-128	89406-130	89406-132
Triple Sugar Iron (TSI) Agar	89406-150	89406-152	89406-154	89406-156
Tryptic Soy Agar (TSA)	89406-158	89406-160	89406-162	89406-164
Tryptic Soy Agar with Lecithin and Tween*	89406-168	89406-170	89406-172	89406-174
Tryptic Soy Broth (TSB)	89406-176	89406-178	89406-180	89406-182
Universal PreEnrichment Broth	10153-340	10153-338	10153-336	10153-334
UVM Modified Listeria Enrichment Broth	89406-218	89406-220	89406-222	89406-224
Violet Red Bile Agar (VRBA)	89406-234	89406-236	89406-238	89406-240
Violet Red Bile Agar with MUG	89406-226	89406-228	89406-230	89406-232
WL Differential Medium	89406-258	89406-260	89406-262	89406-264
WL Nutrient Medium	89406-266	89406-268	89406-270	89406-272
XLD Agar	89406-274	89406-276	89406-278	89406-280
XLT4 Agar Base	89406-634	89406-636	89406-638	89406-640

## Supplements and Antibiotics

	Product	Quantity	Cat. no.
1	Egg Yolk Suspension	1 x 100ml	89407-700
2	Bacillus Cereus Selective Supplement Polymyxin B	10x50,000 IU/vial	89423-164
3	Egg Yolk Tellurite Emulsion, 100%	1 x 100ml	89407-702
4	Sodium Novobiocin	10 x 10mg	89423-158
5	Tetrathionate Supplement	50ml	89407-624

+ Mylar® Zip-bags contain a pre-weighed amount of blended powder, sufficient to prepare two liters of finished product (after water is added) unless noted by an asterisk \*\*\*.

Tween® is a registered trademark of ICI Americas, Inc.



# Pathogen Detection

## Coagulase Plasma

Lyophilized rabbit plasma, for identification of *Staphylococcus aureus* by using coagulase test.

6x3ml.....89407-458  
6x20ml .....89407-460



Showing positive (top tube) and negative (bottom tube) coagulase tests, Cat. no. 89407-458.

## EcoliPRO™ O157 Latex Kit

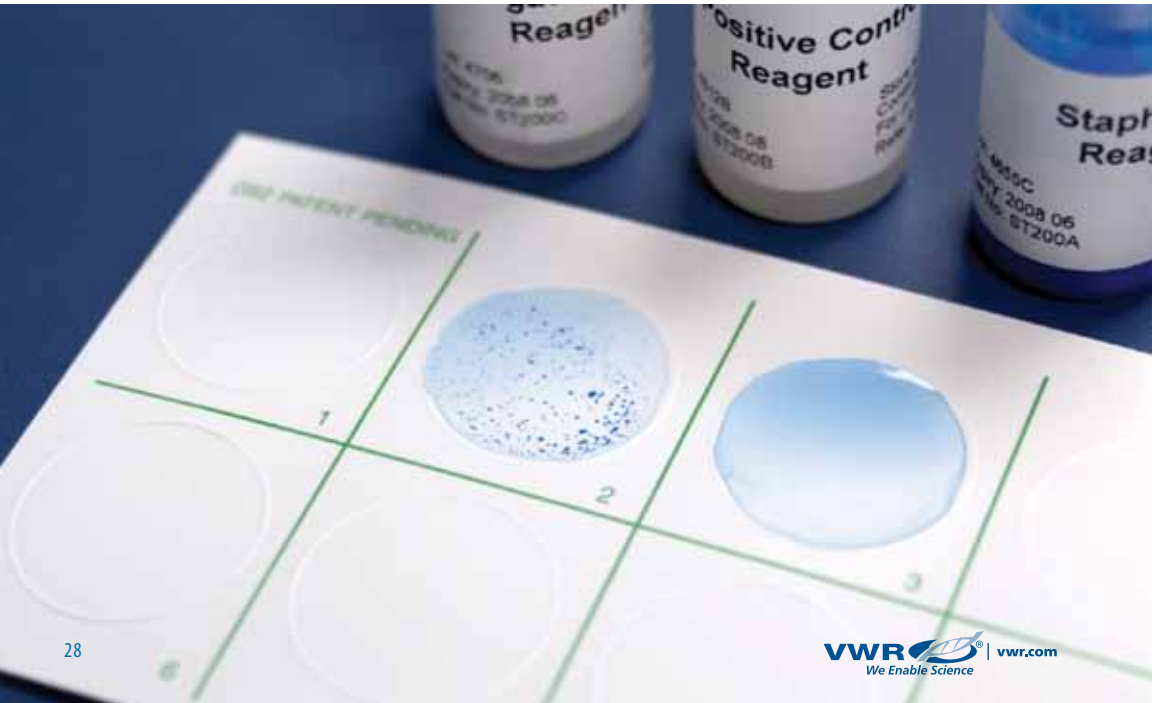
For the identification of *E. coli* O157 from a colony of bacteria. So sensitive that it requires only one colony. Uses proprietary antibodies that eliminate the possibility of cross-reactions with *Escherichia hermannii* and other sorbitol-negative *Escherichia* species. Contains both positive and negative controls. Includes reaction cards and mixing sticks. Rapid results in just two minutes.

50 tests.....89407-502

## StaphTex™ Blue (for *Staph aureus*)

Produces clear and reliable results when testing for *Staphylococcus aureus*. The plasma-coated blue latex beads create the easiest read-out ever! Positives rapidly agglutinate the blue beads on a white background, while negatives remain consistently smooth. The StaphTex™ Blue kit tests for both the Clumping Factor and Protein A found in *Staphylococcus aureus*. Liquid controls are included.

50 tests..... 89407-930  
200 tests .....89407-932







Food, Water, Dairy, & Beverage  
**Microbiology**

Manufactured by



**1.800.932.5000**  
**vwr.com**



Prices and product details are current when published; subject to change without notice. | Certain products may be limited by federal, state, provincial, or local regulations. | VWR makes no claims or warranties concerning sustainable/green products. Any claims concerning sustainable/green products are the sole claims of the manufacturer and not those of VWR International, LLC. All prices are in US dollars unless otherwise noted. Offers valid in US, void where prohibited by law or company policy, while supplies last. | VWR, the VWR logo and variations on the foregoing are registered (®) or unregistered trademarks and service marks, of VWR International, LLC and its related companies. All other marks referenced are registered by their respective owner(s). | Visit [vwr.com](http://vwr.com) to view our privacy policy, trademark owners and additional disclaimers. ©2016 VWR International, LLC. All rights reserved.