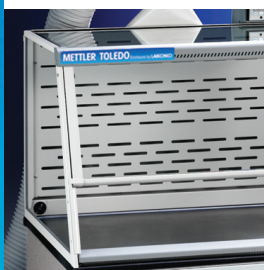


METTLER TOLEDO Enclosures by Labconco



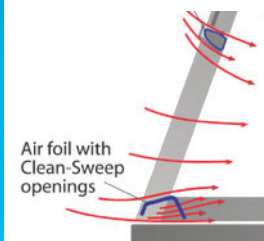
Greatest Stability

A chemical resistant marble base provides the greatest amount of stability.



Static-dissipative Materials

Epoxy-coated aluminum and steel and tempered safety glass dissipate static, reducing potential for weighing errors.



Air foil with Clean-Sweep openings

Maximum Containment

Patented Clean-Sweep™ air foil allows air to sweep the work surface to maximize containment.



Built-In Airflow Monitor

Alerts the user to face velocities outside the preset range. Ensures operator safety at all times.



Safety Enclosures

Protection During Weighing Processes

METTLER TOLEDO Enclosures by Labconco are specifically designed to protect the analyst during the weighing process. The patented Clean-Sweep™ air foil will maximize the containment of powders, particulates, and fumes to ensure operator safety. The ergonomic design and interior dimensions make this product ideal for micro and analytical balances, and the granite work surface will provide the greatest stability for your products.

Technical Data

Dimensions

- 3950310: 36' w x 29.0" d x 37.1" h
- 3970100: 36.0" w x 29.0" d x 28.6" h
- 3930310: 36.0" w x 29.0" d x 28.6" h
- Internal working depth: 23.4"

Construction

- Glacier white and gray, dry powder epoxy-coated aluminum frame and steel rear plenum and baffle.
- Granite work surface
- 1/4" thick tempered safety glass front sash, sides, and top
- Ergonomic air foil with aerodynamic Clean-Sweep™ airflow openings maximizes containment
- Upper containment sash foil directs contaminants away from the operator
- Upper dilution air supply sweeps clean air to the back of the sash to keep contaminants away from the operator
- 8" sash opening limits exhaust demand

Order Information

Description	Part No.
3' W Filtered Enclosure with built-in blower	3950310
3' W HEPA System Enclosure including separate FilterMate Portable Exhauster	3970100
3' W Direct Enclosure Requires ducting or FilterMate	3930310
4' W Filtered Enclosure with built-in blower	3950410
4' W HEPA System Enclosure including separate FilterMate Portable Exhauster	3970500
4' W Direct Enclosure Requires ducting or FilterMate	3930410
FilterMate Portable Exhauster for use with Carbon Filter. Filter not included.	3970011
FilterMate Portable Exhauster for use with HEPA & Carbon Filter. HEPA Filter included, Carbon Filter required.	3970013

Accessories

Description	Part No.
Organic Carbon Filter for FilterMate	3923400MT
Formaldehyde Carbon Filter for FilterMate	3923401MT
Ammonia Carbon Filter for FilterMate	3923402MT
HEPA Filter for FilterMate	3707900MT

Alarm

- Supplied with Guardian Airflow Monitor
- Continuously monitors airflow with a Green LED that glows when airflow is within range
- A Red LED glows and an audible alarm sounds when the airflow is outside the set point range

Testing

- SEFA 1-2002
- Modified ASHRAE 110-1995
- ANSI Z9.5-1993

All Systems Include

- Granite work surface
- Guardian airflow monitor
- Waste chute
- Necessary ductwork

Description	Part No.
HEPA Filter for 3' Filtered System	3707901MT
3' Base Stand - Fixed Feet	3746701MT
4' Base Stand - Fixed Feet	3746702MT
Fluorescent Light Kit for 3930310 and 3970100	3909200MT
Replacement Bag-In / Bag-Out for FilterMate	3776002MT
Replacement Bag-In / Bag-Out for Filtered System	3776004MT
Organic Carbon Filter – 3' Filtered System	3937300MT
Formaldehyde Carbon Filter – 3' Filtered System	3937301MT
Ammonia Carbon Filter - 3' Filtered System	3937302MT
Utility Shelves	3925000MT
Tissue Holder	3927800MT
Bottle Holder	3927700MT
Duct Transition Adapter – Upper – 5" ID	3912400MT
Duct Transition Adapter – Upper – 6" OD	3912401MT
Canopy Connection for 3' Filtered System	3924401MT
Printer Stand for Filtered System	3956900MT
Vibration Isolation Pads – 2" x 2" – Set of 6	3909800MT
Waste Chute Stopper	5248300MT
Waste Chute Bags	3534500MT



Mettler-Toledo, Inc.
Tel. (800) METTLER
Fax (614) 438-4525
Internet: www.mt.com

Specifications subject to change without notice
METTLER TOLEDO® is a registered trademark
of Mettler-Toledo, Inc.

BAL-0511-LIT

www.mt.com/balance-enclosures

For more information