

Corning[®] Brand Equipment Product Selection Guide



Introduction

Corning Life Sciences is pleased to present our Equipment Selection Guide. In this guide, you will find a selection of Corning's newest and most requested products.

For up-to-date information on Corning Life Sciences' comprehensive range of products and services, go to vwr.com/corning where you can access:

- ▶ New products information
- ▶ Product catalog
- ▶ Technical information including:
 - Application notes
 - Instruction manuals
 - Product bulletins
 - Product selection guides
- ▶ Product literature

Equipment



Corning® Cell Counter	2
Liquid Handling Equipment	3
Corning Lambda™ EliteTouch™ Single-channel, 8-channel, and 12-channel Pipettors, and Accessories	3
Corning Lambda EliteTouch Starter Kit	3
Corning Lambda Plus Single-channel, 8-channel and 12-channel Pipettors and Accessories	4
Corning Lambda Plus Starter Kit	4
Costar® 8-Pette® and 12-Pette Multi-channel Pipettors	5
Corning Stripettor™ Ultra Pipet Controller and Accessories	5
Corning Aspirator Device and Accessories	5
Transtar®-96 Liquid Transfer System	5
Costar Reagent Reservoirs	5
Corning Step-R™ Repeating Pipettor and Syringe Tips	6
Corning Step-R Starter Pack	6
Centrifugation Equipment	7
Corning LSE™ Mini Microcentrifuge and Accessories	7
Corning LSE High Speed Microcentrifuge and Accessories	7
Corning LSE Compact Centrifuge, Rotors, and Adapters	8
Agitation Equipment	9
Corning LSE Vortex Mixer and Accessories	9
Corning LSE Digital Microplate Shaker	9
Corning LSE Low Speed Orbital Shaker	10
Corning LSE Orbital Shaker and Accessories	10
Corning LSE Platform Rocker	11
Corning LSE Digital Vortexer	11
Constant Temperature Equipment	12
Corning LSE Benchtop Shaking Incubator	12
Corning LSE 49L Shaking Incubator	12
Corning LSE 71L Shaking Incubator	13
Corning LSE 6 Liter Digital Water Bath	14
Corning LSE Digital Dry Bath Heater	14
Corning LSE Digital Dry Bath Heater Accessories	15
Corning Digital Hot Plates, Stirring Hot Plates, and Stirrers	15
Corning Analog Hot Plates, Stirring Hot Plates, and Stirrers	16
Stir Bars and Stir Bar Retriever	19
Temperature Controller and Accessories	19
Indexes	20

Corning® Cell Counter



The new Corning Cell Counter is the first automated cell counter that combines the best of both worlds and is:

- ▶ Fast – thanks to its online image processing
- ▶ Accurate – thanks to its cloud-based machine learning algorithm.
- ▶ Low-cost – works with common reusable glass hemocytometer. No consumables required.

Specifications

Counting range	5 x 10 ⁴ to 1.0 x 10 ⁷ cells/mL
Counting range	4 to 70 μm
Measurement time	<3 sec.*
Compatibility	Reusable and disposable counting chambers
Sample volume	10 μL
Weight	1.0 kg
Field of view	Selectable 1.96 mm ² or 3 mm ²
Magnification	200X
Image resolution	2048 x 1536
Exported formats	PNG
Light source	LED
Camera	5 MP CMOS
Unit dimensions	122 x 122 x 125 mm (L x W x H)
Operating environment	5°C to 40°C, 20% to 95% humidity

*Measured using a 73 Mbps download speed and a 20 Mbps upload speed. Actual speed can vary depending on the internet connection.

VWR Cat. No.	Description	Qty/Cs
76200-994	Corning Cell Counter	1
76299-416	Counting Chamber	1

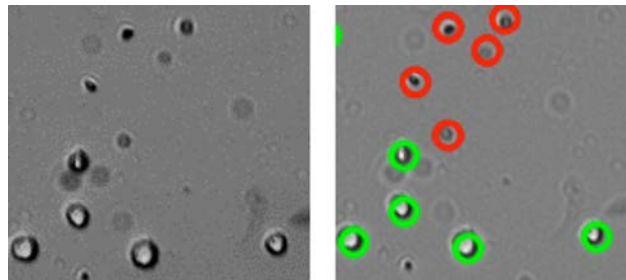


Figure 1. Dead cells stained with Trypan blue are detected by the image analysis algorithm. Red circles represent dead cells, green circles represent live cells.

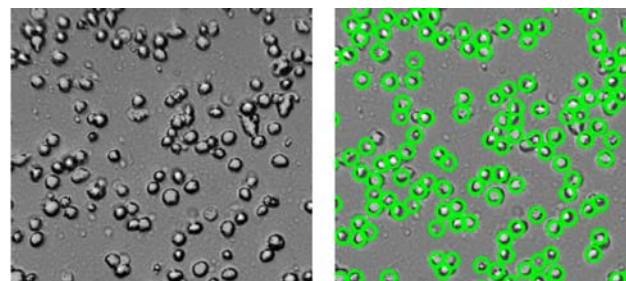


Figure 2. The image analysis algorithm is able to detect clusters of cells. Red circles represent dead cells, green circles represent live cells.

Three-second Cell Counts

The Corning Cell Counter uses cloud-based image processing to perform a single cell count in less than three seconds. This is much faster than most automated cell-counting systems.

Higher Accuracy

The Corning Cell Counter uses a state-of-the-art image analysis software to ensure optimal accuracy. Trypan Blue can be added (Figure 1) to detect cell viability. The Corning Cell Counter can also detect clusters of cells, which leads to accurate cell counts of “highly concentrated samples” (up to 1 x 10⁷ cells/mL; Figure 2).

Low Cost

The Cell Counter uses a reusable glass counting chamber, enabling automated cell counting without the cost of disposable slides.

Liquid Handling Equipment



Corning® Lambda™ EliteTouch™ Single-channel, 8-channel, and 12-channel Pipettors

- ▶ Ergonomic handle design is a perfect fit for both the right and left hand
- ▶ Convenient one-hand volume setting with auto-lock system prevents accidental volume change during work
- ▶ 4-digit counter provides greater precision and is perfectly positioned for visibility at all times
- ▶ Single-channel pipettors are compatible with very narrow tubes
- ▶ Fully autoclavable and UV-resistant for sample protection against contaminations
- ▶ The multi-channel shafts retract individually for perfect tip loading and easier tip ejection
- ▶ Unique ejector lever system enables effortless tip ejection
- ▶ Easy in-lab calibration helps you quickly adjust your pipettor to various liquid types
- ▶ Individually tested and supplied with a certificate of quality
- ▶ Additional colored pushbuttons (included) enable easy size identification and reduce the risk of cross-contamination.
- ▶ 3-year warranty

Corning Lambda EliteTouch Pipettors

Single-channel

VWR Cat. No.	Volume Range (µL)	Accuracy (%)	Precision (%)	Non-filtered Tip (µL)	Qty/Cs
76319-688	0.1 - 2	±40.0 to ±1.5	≤12.0 to ≤0.7	10	1
76319-690	0.5 - 10	±4.0 to ±1.0	≤2.8 to ≤0.4	10	1
76319-692	2 - 20	±3.5 to ±0.8	≤1.5 to ≤0.3	200	1
76319-694	5 - 50	±3.5 to ±0.8	≤1.3 to ≤0.3	200	1
76319-696	10 - 100	±3.0 to ±0.8	≤1.0 to ≤0.2	200	1
76319-698	20 - 200	±2.0 to ±0.6	≤0.7 to ≤0.2	200	1
76319-700	100 - 1,000	±2.5 to ±0.6	≤0.6 to ≤0.2	1,000	1

8-channel

76319-702	0.5 - 10	±10.0 to ±2.0	≤8.0 to ≤1.2	10	1
76319-704	5 - 50	±4.0 to ±1.6	≤2.5 to ≤0.6	200	1
76319-706	10 - 200	±5.0 to ±1.0	≤3.0 to ≤0.6	200/300	1
76319-708	30 - 300	±3.0 to ±1.0	≤1.5 to ≤0.6	300	1

12-channel

76319-710	0.5 - 10	±10.0 to ±2.0	≤8.0 to ≤1.2	10	1
76319-712	5 - 50	±4.0 to ±1.6	≤2.5 to ≤0.6	200	1
76319-646	10 - 200	±5.0 to ±1.0	≤3.0 to ≤0.6	200/300	1
76319-648	30 - 300	±3.0 to ±1.0	≤1.5 to ≤0.6	300	1

Corning Lambda EliteTouch Starter Kit

VWR Cat. No.	Description	Qty/Cs
76319-650	Corning Lambda EliteTouch Starter Kit Includes: 4 single-channel pipettors: 0.5 to 10 µL (Cat. No. 76319-690), 2 to 20 µL (Cat. No. 76319-692), 20 to 200 µL (Cat. No. 76319-698), 100 to 1000 µL (Cat. No. 76319-700); universal linear stand for four single-channel pipettors (Cat. No. 76324-824); Corning DeckWorks pipet tips: 10 µL (Cat. No. 89136-115), 200 µL (Cat. No. 89136-117), 1000 µL (Cat. No. 89136-123); 3 colored pushbuttons (4 sets)	1

Accessories

VWR Cat. No.	Description	Qty/Cs
89137-794	Pipettor stand for one single-channel, 8-channel, or 12-channel pipettor	1
76324-824	Universal linear stand for four pipettors, orange (four single-channel, maximum of two 8-channel or 12-channel pipettors)	1
76324-826	Universal linear stand for four pipettors, transparent (four single-channel, maximum of two 8-channel or 12-channel pipettors)	1
76324-800	Universal linear stand for six pipettors, transparent (six single-channel, maximum of three 8-channel or 12-channel pipettors)	1





Corning Lambda Plus single-channel pipettor



Corning Lambda Plus 8-channel and 12-channel pipettor

Corning® Lambda™ Plus Single-channel, 8-channel, and 12-channel Pipettors

- ▶ Low pipetting forces
- ▶ Volume lock prevents accidental change
- ▶ Fully autoclavable and UV-resistant
- ▶ Designed for universal fit with many common brands of pipet tips
- ▶ Adjustable tip ejector
- ▶ Factory calibrated to strict ISO 8655 standards
- ▶ 3-year warranty

Single-channel

VWR Cat. No.	Volume Range (µL)	Accuracy (%)	Precision (%)	Tip (µL)*	Qty/Cs
89133-478	0.1 - 2.0	±4.0 to ±1.5	≤12.0 to <0.7	10	1
89133-480	0.5 - 10	±4.0 to ±0.5	≤2.8 to <0.4	10	1
89133-482	2 - 20	±3.0 to ±0.8	≤1.5 to <0.3	200	1
89133-484	10 - 100	±1.6 to ±0.8	≤0.8 to <0.2	200	1
89133-486	20 - 200	±1.2 to ±0.6	≤0.6 to <0.02	200	1
89133-488	100 - 1,000	±1.6 to ±0.6	≤0.40 to <0.15	1,000	1

8-channel

89133-490	1 - 10	±8.0 to ±2.0	≤6.0 to <1.2	10	1
89133-492	5 - 50	±4.0 to ±1.6	≤2.5 to <0.6	200	1
89133-494	20 - 200	±3.0 to ±1.0	≤1.5 to <0.6	200/300	1
89133-496	50 - 300	±1.6 to ±1.0	≤1.5 to <0.6	300	1

12-channel

89133-498	1 - 10	±8.0 to ±2.0	≤6.0 to <1.2	10	1
89133-500	5 - 50	±4.0 to ±1.6	≤2.5 to <0.6	200	1
89133-502	20 - 200	±3.0 to ±1.0	≤1.5 to <0.6	200/300	1
89133-504	50 - 300	±1.6 to ±1.0	≤1.5 to <0.6	300	1

* Non-filtered tip size suggestion

Corning Lambda Plus Starter Kit

VWR Cat. No.	Description	Qty/Cs
89187-013	Lambda Plus starter kit Includes: 4 single-channel pipettors: 0.5 to 10 µL (Cat. No. 89133-480), 2 to 20 µL (Cat. No. 89133-482), 20 to 200 µL (Cat. No. 89133-484), 100 to 1000 µL (Cat. No. 89133-486); Universal carousel rack for six single-channel pipettors (Cat. No. 89137-790); Corning DeckWorks pipet tips: 10 µL (Cat. No. 89136-115), 200 µL (Cat. No. 89136-117), 1000 µL (Cat. No. 89136-123)	1 kit

Accessories

VWR Cat. No.	Description	Qty/Cs
89137-790	Corning Universal carousel rack for six Corning Lambda Plus single-channel pipettors	1
89137-792	Corning Universal linear rack for Corning Lambda Plus single- and multi-channel pipettors	1
89137-794	Corning Pipettor stand for Corning 8- and 12-channel pipettors	1
76324-824	Universal linear stand for four pipettors, orange (four single-channel, maximum of two 8-channel or 12-channel pipettors)	1
76324-826	Universal linear stand for four pipettors, transparent (four single-channel, maximum of two 8-channel or 12-channel pipettors)	1
76324-800	Universal linear stand for six pipettors, transparent (six single-channel, maximum of three 8-channel or 12-channel pipettors)	1



Costar® 8-Pette® and 12-Pette® Multi-channel Pipettors



These multi-channel pipettors feature a unique, ergonomic trigger-style aspiration and dispense control mechanism designed to reduce thumb fatigue during repetitive pipetting.

VWR Cat. No.	Volume Range (µL)	Channels	Qty/Pk	Qty/Cs
29442-482	20 - 200	12	1	
29442-484	20 - 200	8	1	

Corning® Stripettor™ Ultra Pipet Controller

The Stripettor Ultra pipet controller is designed for use with glass and plastic serological pipets from 0.5 to 100 mL. When fully charged, the batteries enable up to 8 hours of continuous use. Aspirating and dispensing speed is controlled through the finger triggers.

- ▶ LCD display for continuous visualization of speed, modes, and battery status
- ▶ Colored nose pieces for user or application identification
- ▶ 2-year warranty



VWR Cat. No.	Description	Qty/Pk	Qty/Cs
10023-900	Corning Stripettor Ultra Pipet Controller	1	1

Accessories

10023-902	Hydrophobic PTFE filter 0.2 µm (5 pcs)	5	5
10023-904	Hydrophobic PTFE filter 0.45 µm (5 pcs)	5	5
10804-766	Silicone pipet holder	1	1
10023-906	Battery set, 3 x AAA, NIHM	3	3
10023-908	Battery cover with wings	1	1
10023-910	Universal power supply, 9V with set of adaptors (EU, US, UK, and AUS)	1	1
10024-980	Colored nose pieces, set of 4 (orange, yellow, green, red)	4	4



Corning Aspirator Device and Accessories

VWR Cat. No.	Description	Qty/Pk	Qty/Cs
89091-050	Aspirator device (includes hand piece, grommet for accessory attachment, and single-channel adapter for use with disposable pipet tips)	1	1
29443-002	8-channel adapter for use with disposable pipet tips	1	1
89093-500	Aspirating pipet, without graduations, unplugged, sterile, paper/plastic wrapped	50	500



Transtar®-96 Liquid Transfer System

- ▶ A portable, autoclavable liquid handling device for use with 96-well plates
- ▶ A sterile 96 tip disposable cartridge, which loads into the Transtar system, enables liquids to be aspirated, transferred, and dispensed over a volume range of 25 to 200 µL in 5 µL increments
- ▶ Transtar-96 system accuracy is rated at ±5% at all volume levels



VWR Cat. No.	Description	Sterile	Qty/Pk	Qty/Cs
29442-530	Transtar-96, adjustable-volume pipettor	N/A	1	1
29442-532	Transtar elevator	N/A	1	1
29442-534	Transtar disposable cartridges	Yes	1	24
29442-524	Transtar disposable reservoir liner, open	Yes	1	100
29442-526	Transtar disposable reservoir liner, 12-channel	Yes	1	100
29442-528	Transtar disposable reservoir liner, 8-channel	Yes	1	100

Costar® Reagent Reservoirs

The reagent reservoirs are manufactured from modified polystyrene, are sterile, and disposable.



VWR Cat No.	Volume (mL)	Color	Qty/Pk	Qty/Cs
53504-035	50	White	5	200
29442-474	50	White	1	100
29442-476	100	White	5	200
29442-478	100	White	1	100



Corning® Step-R™ Repeating Pipettor and Syringe Tips

The Corning Step-R Repeating Pipettor is suitable to dispense volatile, dense, viscous, or foaming liquids, and for all applications where long dosing series are required. It works with 8 syringe tip sizes to dispense doses from 1 µL up to 5 mL.

- ▶ Easy volume setting: Volume selection chart conveniently located on the device
- ▶ Fast and precise multiple dispensing: Up to 48 pipetting doses without refilling the syringe tip
- ▶ Wide range of polypropylene syringe tips: 8 different sizes, sterile and non-sterile versions available
- ▶ Positive displacement syringe tips: Dedicated to work with high density or vapor pressure liquids such as glycerol or ethanol
- ▶ Maintenance-free
- ▶ 3-year warranty on the instrument

VWR Cat. No.	Description	Qty/Pk	Qty/Cs
76193-270	Corning Step-R Repeating Pipettor	–	1
76181-474	Syringe tips, 0.05 mL	100	100
76181-486	Syringe tips, 0.05 mL, sterile	1	100
76181-506	Syringe tips, 0.5 mL	100	100
76181-488	Syringe tips, 0.5 mL, sterile	1	100
76181-508	Syringe tips, 1.25 mL	100	100
76181-490	Syringe tips, 1.25 mL, sterile	1	100
76181-510	Syringe tips, 2.5 mL	100	100
76181-492	Syringe tips, 2.5 mL, sterile	1	100
76181-512	Syringe tips, 5 mL	100	100
76181-476	Syringe tips, 5 mL, sterile	1	100
76181-480	Syringe tips, 12.5 mL	100	100
76181-478	Syringe tips, 12.5 mL, sterile	1	100
76181-482	Syringe tips, 25 mL	25	25
76181-486	Syringe tips, 25 mL, sterile	1	25
76181-484	Syringe tips, 50 mL	25	25
76181-470	Syringe tips, 50 mL, sterile	1	25

Accessories

VWR Cat. No.	Description	Qty/Cs
76193-272	Adapter for 25 mL syringe tips	1
76193-274	Adapter for 50 mL syringe tips	1

Corning Step-R Starter Pack

The Corning Step-R starter kit contains:

- ▶ Corning Step-R Repeating Pipettor (Cat. No. **76193-270**)
- ▶ Adapter for 25 mL syringe tips (Cat. No. **76193-272**) and 50 mL syringe tips (Cat. No. **76193-274**); Syringe tips (5/pk) of 0.05 mL (Cat. No. **76181-474**)
- ▶ 2.5 mL (Cat. No. **76181-510**), 5 mL (Cat. No. **76181-512**), 12.5 mL (Cat. No. **76181-480**); Syringe tips (2/pk) of 25 mL (Cat. No. **76181-482**), and 50 mL (Cat. No. **76181-484**)

VWR Cat. No.	Description	Qty/Cs
76193-270	Corning Step-R Starter Pack	1 kit



Corning Step-R Starter Pack

Centrifugation Equipment

Corning® LSE™ Mini Microcentrifuge



The Corning LSE Mini Microcentrifuge is a personal bench top instrument that operates at a fixed speed of 6,000 rpm (RCF 2,000 x g) and was designed for quick spin downs of micro-samples.

- ▶ Quick release rotor system eliminates the need for tools to exchange rotors
- ▶ Electronic braking provides rapid deceleration for more efficient sample prep
- ▶ Compact, rugged design withstands heavy use in crowded lab environment
- ▶ Dual lid switch provides safe operation
- ▶ Ergonomic design allows for comfortable handling
- ▶ Certifications CE, cTUVus

VWR Cat. No.	Description	Voltage	Plug Type	Speed (rpm)	Weight	Dimensions (H x W x D)	Qty/Cs
76163-552	LSE Mini microcentrifuge	110-240V, 50/60Hz	Universal	6,000	2.3 lbs. (1.1 kg)	6.8 x 5.8 x 4.8 in. (17.4 x 14.8 x 12.2 cm)	1

Accessories included in Cat. No. 76163-552 and also sold separately:

VWR Cat. No.	Description	Qty/Cs
76163-554	Rotor, holds 8 x 1.5/2.0 mL tubes	1
76163-556	Rotor, holds 4 x 8-strip tubes	1
76163-548	Adapter, 0.20 for rotor (Cat. No. 76163-554)	8
76163-550	Adapter, 0.25 for rotor (Cat. No. 76163-554)	8
76163-546	Adapter, 0.5 for rotor (Cat. No. 76163-554)	8
76163-522	Power adapter, 24V	1

Corning® LSE™ High Speed Microcentrifuge



The Corning LSE high speed microcentrifuge features an easy-to-use, digital control interface, and high-speed performance for quick nucleic acid and protein separations. Two control knobs are used to precisely set rotor speed and run time, and parameters are shown on the easy-to-read LED displays. Press the “Speed/G-force” knob to toggle the display between rpm and calculated g-force.

The LSE high speed microcentrifuge incorporates a brushless drive and unique air cooling system to both reduce noise and minimize sample heating even during prolonged runs at maximum speed.

- ▶ Fast acceleration to a maximum speed 13,300 rpm/16,300 x g
- ▶ Complete with easy access, 24 x 1.5/2.0 mL rotor
- ▶ Precise, digital control system
- ▶ Set and view rotor speed in rpm or g-force
- ▶ Quiet and cool running, even at maximum speed

VWR Cat. No.	Description	Plug Voltage	Dimensions Type	Speed (rpm)	Weight	(H x W x D)	Qty/Cs
89133-510	LSE high speed microcentrifuge	120V, 50/60Hz	US	500 - 13,300	18 lbs. (8.1 kg)	9.25 x 11.5 x 8.5 in. (23.5 x 29.3 x 21.6 cm)	1

Accessories

VWR Cat. No.	Description	Qty/Pk
89184-618	Individual adaptors for 0.5/0.4 mL tubes	6
89184-620	Individual adaptors for 0.2 mL tubes	6

Corning® LSE™ Compact Centrifuge

The Corning LSE compact centrifuge is a space saving centrifuge ideal for use in life science and industrial research labs.

Four angle rotors are available for this centrifuge, including an innovative combination rotor designed by Corning to allow for greater versatility. This multi-purpose rotor can accommodate various tube sizes including a 5 mL microcentrifuge tube, as well as round and conical bottom 15 mL and 50 mL centrifuge tubes. Tubes are inserted at an increased fixed angle to allow for improved efficiency of cellular pelleting. An equal g-force is applied to the samples when spinning 15 mL and 50 mL tubes simultaneously. In addition, the LSE compact centrifuge can accommodate a swing-out rotor for 6 x 5 mL.

The centrifuge's control panel features a large digital display and a convenient turn knob for setting parameter values. An internal microprocessor maintains precise control over operation with ten levels of acceleration and deceleration and a speed range from 200 rpm to 6,000 rpm. For safety considerations, the centrifuge is equipped with an electronic lid lock system, over speed protection, and an automatic shut off imbalance detection system.

- ▶ Maximum capacity: 6 x 50 mL
- ▶ Maximum speed: 6,000 rpm/4,185 x g
- ▶ Accepts both conical and round bottom tubes
- ▶ Space saving footprint: 11" x 14.6" x 10"



VWR Cat. No.	Description	Voltage	Plug Type	Speed (rpm)	Weight (kg)	Dimensions (L x W x D)	Qty/Cs
89204-722	LSE compact centrifuge	120V, 50/60Hz	US	200 - 6,000	33 lbs. (15 kg)	11 x 14.6 x 10.2 in. (28 x 37 x 26 cm)	1

Rotors

VWR Cat. No.	Description	Max. Speed (rpm)	Max. RCF	Qty/Cs
89204-724	LSE 6 x 50 mL fixed angle rotor	6,000	3,820	1
89204-726	LSE 12 x 15 mL fixed angle rotor	6,000	4,180	1
89204-730	LSE 6 x 5 mL swing-out rotor	3,500	1,450	1
89204-728	LSE 18 x 1.5 mL fixed angle rotor	6,000	2,930	1
89235-045	LSE combination rotor for 5, 15, and 50 mL tubes	6,000	3,820	1

Adapters

VWR Cat. No.	Description	Qty/Cs
89204-732	LSE adapters for 10 and 15 mL tubes in 50 mL rotor	6
89204-734	LSE adapters for 5 and 7 mL tubes in 50 mL rotor	6
89204-736	LSE adapters for 5, 7, and 10 mL tubes in 15 mL rotor	6



6 x 50 mL fixed angle rotor (Cat. No. 89204-724)



12 x 15 mL fixed angle rotor (Cat. No. 89204-726)



6 x 5 mL swing-out rotor (Cat. No. 89204-730)



18 x 1.5 mL fixed angle rotor (Cat. No. 89204-728)



Combination rotor (Cat. No. 89235-045)

Agitation Equipment

Corning® LSE™ Vortex Mixer



The Corning LSE variable speed vortex mixer provides fast, efficient mixing with minimal vibration. The unit features a powerful, counter-balanced motor drive, and continuous or “touch” mix modes. A range of accessories are available for all common sample tubes and containers.

- ▶ Variable speed for gentle to vigorous mixing
- ▶ Optimized counter balance for minimal vibration
- ▶ Lightweight and portable
- ▶ Includes cup head for all standard microtubes and centrifuge tubes
- ▶ Mix a variety of tubes and plates with optional accessory heads
- ▶ Touch and continuous mix modes



Accessory heads for Corning LSE vortex mixer

VWR Cat. No.	Description	Voltage	Plug Type	Speed (rpm)	Weight	Dimensions (L x W x D)	Qty/Cs
89133-512	LSE vortex mixer	120V, 50/60Hz	US	0 - 3,400	4.8 lbs. (2.2 kg)	5.5 x 6.3 x 5.1 in. (14 x 16 x 13 cm)	1

Accessories

VWR Cat. No.	Description	Qty/Cs
89137-802	Optional head, 3 inch, for processing larger numbers of tubes	1
89137-804	Optional head for 24 x 1.5/2.0 mL tubes, 24 x 0.5 mL tubes, and 32 x 0.2 mL tubes (or 4 tube strips)	1
89137-806	Optional head for 1 microplate, or 64 x 0.2 mL tubes, or 8 x 0.2 mL tube strips	1
89137-808	Optional head for 8 x 15 mL and 8 x 12/13 mm diameter tubes	1
89137-810	Optional head attachment for 6 x 50 mL tubes	1
89137-812	Optional head for 12 x 1.5/2.0 mL tubes, held horizontally	1
89137-814	Optional head for 4 x 15 mL tubes, held horizontally	1
89137-816	Optional head for 2 x 50 mL tubes, held horizontally	1

Corning LSE Digital Microplate Shaker



The Corning LSE digital microplate shaker features digital control of shaking speed and run time. A single control knob is used to set parameters, and values are shown on a large 3-digit display. A sturdy base encloses the motor for quiet, vibration-free operation.

The included stainless steel platform accommodates up to 4 microplates (standard or deep well), and the shaker is safe for use in temperature controlled environments from 4°C to 65°C.

- ▶ Large capacity – process up to 4 microplates
- ▶ 3 mm orbit for resuspending, homogenizing, or vortexing
- ▶ Large digital display with single-knob control of speed time
- ▶ Suitable for cold room or incubator use

VWR Cat. No.	Description	Voltage	Plug Type	Speed (rpm)	Weight	Dimensions (L x W x D)	Qty/Cs
89133-526	LSE digital microplate shaker	120V, 50/60Hz	US	100 - 1,400	9.5 lbs. (4.3 kg)	6.6 x 10.98 x 6 in. (16.8 x 27.9 x 15.3 cm)	1



Corning® LSE™ Low Speed Orbital Shaker

The Corning LSE low speed orbital shaker includes a 30 x 30 cm platform and is ideal for staining and destaining gels, washing blots and general mixing applications. Speed can be set from 3 to 60 rpm and the timer can be set for up to 2 hours or for continuous operation.

- ▶ Ideal for staining and washing of fragile gels
- ▶ Gentle motion prevents foaming of liquids
- ▶ Simple analog control with easy-turn knobs
- ▶ 19 mm orbit for blotting, gel staining, and general mixing
- ▶ Safe for cold room and incubator use

VWR Cat. No.	Description	Voltage	Plug Type	Speed (rpm)	Weight	Dimensions (L x W x D)	Qty/Cs
89133-524	LSE low speed orbital shaker	120V, 50/60Hz	US	3 - 60	11 lbs. (5 kg)	10 x 12.6 x 6.3 in. (25.5 x 32 x 16 cm)	1



Orbital shaker with optional clamps and flasks

Corning LSE Orbital Shaker

The Corning LSE orbital shaker meets a variety of shaking and mixing applications. A powerful brushless motor and counter-balanced shaker mechanism provides smooth operation for years of trouble-free use. Different platforms (order separately) are available and are easily interchangeable.

- ▶ Two stainless steel platform options
- ▶ 19 mm orbit for aeration of cultures and staining gels
- ▶ Large digital display with single-knob control
- ▶ Digital control of shaking speed and time
- ▶ Safe for cold room or incubator use
- ▶ Maximum capacity: 4 x 1L, 5 x 500 mL, 9 x 250 mL, or 16 x 125 mL

VWR Cat. No.	Description	Voltage	Plug Type	Speed (rpm)	Weight	Dimensions (L x W x D)	Qty/Cs
89133-514	LSE orbital shaker	120V, 50/60Hz	US	20 - 300	16 lbs. (7.3 kg)	10.1 x 12.5 x 5 in. (25.6 x 31.8 x 12.7 cm)	1

Accessories

VWR Cat. No.	Description	Qty/Cs
89133-516	Flat platform with rubber mat	1
89133-518	Flask clamp platform (without clamps)	1
89137-818*	Clamp for 25 mL flask	1
89137-820*	Clamp for 50 mL flask	1
89137-822*	Clamp for 125 mL flask	1
89133-520*	Clamp for 250 mL flask	1
89133-522*	Clamp for 500 mL flask	1
89137-824*	Clamp for 1L flask	1

* Also fits the 49L and 71L shaking incubators, see pages 12 and 13.

Corning® LSE™ Platform Rocker



The Corning LSE Platform Rocker is a compact yet high capacity rocker that is ideal for western blotting and general mixing applications.

- ▶ Low profile and compact size (11 lbs./5 kg)
- ▶ 11-pound load capacity
- ▶ Non-slip rubber pads to prevent sample containers from moving during operation
- ▶ Double platform model available for increased capacity
- ▶ 5-year warranty



VWR Cat. No.	Description	Platform	Voltage	Speed (Tilts/min.)	Weight	Dimensions (L x W x H)	Qty/Cs
76200-232	LSE platform rocker	Single	115V, 50/60Hz	5 - 120	11.7 lbs. (5.3 kg)	12.8 x 14.2 x 5.7 in. (32.5 x 36 x 14.5 cm)	1
76200-234	LSE platform rocker	Single	230V, 50/60Hz	5 - 120	11 lbs. (5 kg)	12.8 x 14.2 x 5.7 in. (32.5 x 36 x 14.5 cm)	1
76200-236	LSE platform rocker	Double	115V, 50/60Hz	5 - 120	12.7 lbs. (5.8 kg)	12.8 x 14.2 x 5.7 in. (32.5 x 36 x 14.5 cm)	1
76200-238	LSE platform rocker	Double	230V, 50/60Hz	5 - 120	12.7 lbs. (5.8 kg)	12.8 x 14.2 x 5.7 in. (32.5 x 36 x 14.5 cm)	1

Corning LSE Digital Vortexer



The Corning Digital Vortexer is a multipurpose shaker dedicated to a variety of shaking and mixing applications. The interchangeable platforms accommodate many different sample containers such as flasks, bottles, tube racks, microplates, boxes, and dishes.

- ▶ Three versatile platform options (available separately)
- ▶ Compact design with easy-access control panel
- ▶ Non-slip rubber mat to keep containers in place
- ▶ Safe for cold room or incubator use
- ▶ 5-year warranty



VWR Cat. No.	Description	Voltage	Speed (rpm)	Weight	Dimensions (L x W x H)	Qty/Cs
76200-268	LSE digital vortexer	115V/60Hz	100 - 1200	4.4 lbs. (2 kg)	10.3 x 13.3 x 5.1 in. (26.2 x 33.7 x 13 cm)	1
76200-270	LSE digital vortexer	230V/50Hz	100 - 1200	4.4 lbs. (2 kg)	10.3 x 13.3 x 5.1 in. (26.2 x 33.7 x 13 cm)	1
76200-272	Platform for four microplates	–	–	–	–	1
76200-274	Platform with non-slip rubber mat	–	–	–	–	1
76200-276	Spring loaded platform for flasks, bottles, or tube racks	–	–	–	–	1



Platform for four microplates (Cat. No. 76200-272)



Platform with non-slip rubber mat (Cat. No. 76200-274)



Spring loaded platform for flasks, bottles, or tube racks (Cat. No. 76200-276)

Constant Temperature Equipment

Corning® LSE™ Benchtop Shaking Incubator



Truly a benchtop style, the lid on the Corning benchtop shaking incubator has a low pivot point which provides a space-saving size sure to fit on the lab bench and under shelves. Each unit includes a software package, which provides the option of saving data to an external computer or monitoring rpm and temperature throughout runs. The maximum capacity is 4 x 1L flasks.

Specifications

Temperature Range	Ambient +5°C to +70°C
Operation Temperature Range	4°C to 65°C
Shaker Speed	20 to 300 rpm
Shaker Timer	1 minute to 99 hours or continuous
Temperature Increments	0.1°C
Speed Increments	1 rpm
Platform Dimensions	11.8 x 11.8 in. (30 x 30 cm)
Dimensions (W x D x H)	14.6 x 20.9 x 15.7 in. (37 x 53 x 40 cm)
Weight	43 lbs. (19.5 kg)
Height Lid Open	21.7 in. (55 cm)
Communication Port	USB to monitor temperature and rpm



Universal platform
(Cat No. 10020-652)



Plastic clamps
(Cat Nos. 10020-662/664/880/882)

VWR Cat. No.	Description	Qty/Cs
10020-988	LSE Benchtop shaking incubator with platform, 120V	1
10020-650	LSE Benchtop shaking incubator with platform, 230V (EU plug)	1
10020-652	Universal platform, 30 x 30 cm	1
10020-654	Petri dish shelf	1
10020-656	Sticky mat, 150 x 150 x 30 mm	1
10020-658	Microtiter hotel, holds maximum 3 microplates	1
10020-660	Combination tube holder, 6 x 15/50 mL tubes	1
10020-662	Plastic clamp, 125 mL	1
10020-664	Plastic clamp, 250 mL	1
10018-880	Plastic clamp, 500 mL	1
10018-882	Plastic clamp, 1,000 mL	1
10020-682	Clamp for 2,000 mL flask (for use with 71L shaking incubator only)	1
10018-890	Universal Spring loaded clamp platform	1

Corning LSE 49L Shaking Incubator



This cabinet-style incubator has a compact footprint and can also be stacked to maximize space efficiency. The built in orbital shaker accepts a large assortment of platforms and clamps that can accommodate flasks, Petri dishes, and test tube racks. The maximum capacity is 4 x 1L flasks. For accessories, see page 13.

Specifications

Chamber Volume	49L/1.7 cu. ft.
Temperature Range/Display	Ambient +5° to 80°C in 0.1°C increments/digital
Temperature Uniformity/Accuracy	±0.25°C/±0.1°C
Shaker Speed	20 to 400 rpm (maximum 300 rpm when stacked)
Shaker Timer	0 to 99 minutes or continuous
Shaker Orbit	19 mm
Flask Capacity	4 x 1L, 5 x 500 mL, 9 x 250 mL, 16 x 125 mL
Construction	Interior: Mirrored stainless steel Exterior: Cold rolled steel
Chamber (W x D x H)	13.5 x 14.75 x 15 in. (34.3 x 37.5 x 38.1 cm)
Exterior (W x D x H)	23 x 19.25 x 22.25 in. (42.5 x 55 x 58 cm)
Weight	83 lbs. (37.7 kg)



Universal spring loaded clamp platform (Cat. No. 10018-890)

VWR Cat. No.	Description	Qty/Cs
10020-976	LSE Shaking incubator, 49 Liters, 120V	1
10018-884	Flask clamp platform, pre-drilled	1
10018-886	Flat platform with nonslip rubber mat (300 x 300 mm)	1
10018-888	Double flat platform with non-slip rubber mat (300 x 300 mm)	1
10018-890	Universal spring-loaded clamp platform	1
10018-892	Shelf, full, for Cat. No. 10020-976	1
10018-894	Stacking adapter for Cat. No. 10020-976	1

Corning® LSE™ 71L Shaking Incubator

This high performance shaking incubator has a full size glass door and internal light that allows easy viewing of samples without disturbing the chamber contents. Mechanical convection provides a safe, stable temperature environment and fast chamber temperature recovery after opening the door. The maximum capacity is 4 x 2L/6 x 1L flasks.



Specifications

Chamber Volume	71L/2.5 cu. ft.
Temperature Range/Display	Ambient +5° to 80°C
Temperature Uniformity/Accuracy	±0.2°C at 37°C
Temperature Display	0.1°C
Shaker Speed	20 to 300 rpm
Shaker Orbit	19 mm
Shaker Timer	0 to 99 minutes or continuous
Dimensions (W x D x H)	Chamber: 17.4 x 15.6 x 16 in. (44.2 x 39.6 x 40.6 cm) Exterior: 22.6 x 21.4 x 25 in. (57.4 x 54.4 x 63.5 cm)
Weight	140 lbs. (63.6 kg)

VWR Cat. No.	Description	Qty/Cs
10020-980	LSE Shaking incubator, 71L, 120V	1
10020-666	Shaking platform pre-drilled for flask clamps	1
10020-668	Flat shaker platform with non-slip rubber mat (390 x 330 mm)	1
10020-670	Platform with 4 x 2L flask clamps	1
10020-672	Platform with 6 x 1L flask clamps	1
10020-674	Platform with 8 x 500 mL flask clamps	1
10020-676	Platform with 12 x 250 mL flask clamps	1
10020-678	Platform with 20 x 125 mL flask clamps	1
10020-680	Platform with 30 x 50 mL flask clamps	1
10018-890	Universal spring loaded clamp platform	1
10020-682	Clamp for 2,000 mL flask (for use with 71L shaking incubator only)	1
10020-684	Rack holder for 15 mL test tubes	1
10020-686	Rack holder for 50 mL test tubes	1
10020-688	Shelf, full, for Cat. No. 10020-980	1



Cat. No. 10020-668



Cat. No. 10020-670



Cat. No. 10020-672



Cat. No. 10020-674



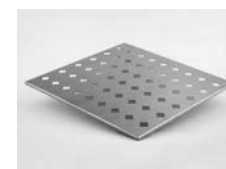
Cat. No. 10020-676



Cat. No. 10020-678



Cat. Nos. 10020-684/686



Cat. No. 10020-688



Corning® LSE™ 6 Liter Digital Water Bath

The Corning LSE Digital Water Bath is constructed from corrosion-resistant stainless steel and can accommodate up to 6 liters of water or can serve as a dry bath when using thermal beads.

- ▶ Compact design
- ▶ Stainless steel cover to retain heat and minimize evaporation
- ▶ Powerful 500W heater programmed by LED digital controller
- ▶ Precise temperature control by hydraulic thermostat
- ▶ 3-year warranty

Specifications

Chamber capacity	6L
Chamber construction	Stainless steel
Chamber maximum load	20 lbs. (9.09 kg)
Temperature range	Ambient +5°C to 99°C
Exterior dimensions (W x D x H)	14.9 x 11.4 x 9.0 in. (12.9 in. with cover) 38 x 29 x 23 cm (33 cm with cover)
Chamber dimensions	12.6 x 6.7 x 6.9 in. (32 x 17 x 18 cm)
Weight	19 lbs. (8.6 kg)
VWR Cat. No.	Description
10020-984	Digital water bath, 6L, 120V
10020-986	Digital water bath, 6L, 230V (EU and UK plug)

Corning LSE Digital Dry Bath Heater

The Corning Digital Dry Bath Heaters are available in single, dual, and four block configurations (blocks not included, sold separately) and provide a broad temperature range up to 150°C, which makes them useful for a variety of applications in molecular biology, histology, clinical, environmental, and industrial laboratories. They have been designed to incorporate the best combination of features including block capacity, dual displays, and an external temperature probe that gives life science researchers the confidence and efficiency they need when working with precious samples.

- ▶ Single, dual, and four block capacity to maximize sample processing (blocks not included, sold separately)
- ▶ Dual display allows for easy monitoring of temperature and time
- ▶ USB connectivity enables traceability of data
- ▶ Molded block chamber provides excellent temperature uniformity
- ▶ 3-year warranty



Single block digital dry bath heater



Double block digital dry bath heater



Four block digital dry bath heater

VWR Cat. No.	Description	Block Capacity	Voltage	Plug	Weight	Dimensions (L x W x H)	Qty/Cs
75990-496	LSE digital dry bath heater	Single	120V	US	7.0 lbs. (3.2 kg)	8.3 x 12.4 x 4.7 in. (21 x 29 x 12 cm)	1
75990-504	LSE digital dry bath heater	Dual	120V	US	7.0 lbs. (3.2 kg)	8.3 x 12.4 x 4.7 in. (21 x 29 x 12 cm)	1
75989-426	LSE digital dry bath heater	Four	120V	US	9.6 lbs. (4.4 kg)	8.3 x 16.3 x 4.7 in. (21 x 39 x 12 cm)	1
75990-498	LSE digital dry bath heater	Single	230V	EU	7.0 lbs. (3.2 kg)	8.3 x 12.4 x 4.7 in. (21 x 29 x 12 cm)	1
75989-420	LSE digital dry bath heater	Dual	230V	EU	7.0 lbs. (3.2 kg)	8.3 x 12.4 x 4.7 in. (21 x 29 x 12 cm)	1
75989-428	LSE digital dry bath heater	Four	230V	EU	9.6 lbs. (4.4 kg)	8.3 x 16.3 x 4.7 in. (21 x 39 x 12 cm)	1
75990-500	LSE digital dry bath heater	Single	230V	UK	7.0 lbs. (3.2 kg)	8.3 x 12.4 x 4.7 in. (21 x 29 x 12 cm)	1
75989-422	LSE digital dry bath heater	Dual	230V	UK	7.0 lbs. (3.2 kg)	8.3 x 12.4 x 4.7 in. (21 x 29 x 12 cm)	1
75989-430	LSE digital dry bath heater	Four	230V	UK	9.6 lbs. (4.4 kg)	8.3 x 16.3 x 4.7 in. (21 x 39 x 12 cm)	1
75990-502	LSE digital dry bath heater	Single	100V	JP	7.0 lbs. (3.2 kg)	8.3 x 12.4 x 4.7 in. (21 x 29 x 12 cm)	1
75989-424	LSE digital dry bath heater	Dual	100V	JP	7.0 lbs. (3.2 kg)	8.3 x 12.4 x 4.7 in. (21 x 29 x 12 cm)	1
75989-432	LSE digital dry bath heater	Four	100V	JP	9.6 lbs. (4.4 kg)	8.3 x 16.3 x 4.7 in. (21 x 39 x 12 cm)	1



Digital dry bath heater accessories

Accessories

VWR Cat. No.	Description	Qty/Cs
89137-826	Single block, 48 x 0.2 mL PCR tubes or 6 x 0.2 mL strips	1
89133-532	Single block, 24 x 2.0 mL tubes	1
89133-534	Single block, 24 x 0.5 mL tubes	1
89133-536	Single block, 24 x 1.5 mL tubes	1
89137-828	Single block, 35 x 6 mm tubes	1
89137-830	Single block, 20 x 10 mm tubes	1
89137-832	Single block, 20 x 12 mm tubes	1
89137-834	Single block, 20 x 13 mm tubes	1
89137-836	Single block, 12 x 15 mL centrifuge tubes	1
89137-838	Single block, 12 x 16 mm tubes	1
89137-840	Single block, 12 x 17 mm tubes	1
89137-842	Single block, 6 x 20 mm tubes	1
89137-844	Single block, 6 x 25 mm tubes	1
89137-846	Single block, 5 x 50 mL centrifuge tubes (for single block unit only)	1
89137-848	Single block, 96-well PCR plate, skirted or nonskirted	1
89137-850	Dual block, 96-well multiple well plate or 4 slides (for dual block unit only)	1
89137-852	Dual block, 96-well PCR plate, skirted, or nonskirted (for dual block unit only)	1
89137-854	Dual block, 384-well PCR plate (for dual block unit only)	1

Corning® Digital Hot Plates, Stirrers, and Stirring Hot Plates

Corning digital hot plates, stirrers, and stirring hot plates are made with the same durability and quality Corning has been putting into Pyroceram® top products since 1964. All models include a Pyroceram top.



Model PC-400D

- ▶ Twin display stirring hot plate shows both temperature and stirring speed on separate digital displays to ensure accuracy
- ▶ Temperature accuracy within $\pm 2^{\circ}\text{C}$ and stirring speeds at $\pm 5\%$ of the speed setting you choose
- ▶ Digital displays indicate when set temperature and stirring speeds are reached
- ▶ Safety indicators – power button and hot top indicators warn if unit is plugged in or is too hot to touch
- ▶ Angled front panel and large knobs minimize damage from spills
- ▶ PC-400D/410D/420D top plate size: 5 x 7 in. (12.7 x 17.8 cm)
- ▶ PC-600D/610D/620D top plate size: 10 x 10 in. (25.4 x 25.4 cm)
- ▶ 2-year warranty

Digital Hot Plates

VWR Cat. No.	Model	Voltage	Temperature Range	Dimensions (L x W x D)
89090-206	PC-400D	120V/60Hz	5°C - 550°C	4.3 x 7.7 x 11 in. (10.8 x 19.7 x 28 cm)
89090-188	PC-600D	120V/60Hz	5°C - 550°C	4.6 x 7.7 x 15.4 in. (11.75 x 19.7 x 39.1 cm)
89090-208	PC-400D	230V/50Hz	5°C - 550°C	4.3 x 7.7 x 11 in. (10.8 x 19.7 x 28 cm)
89090-190	PC-600D	230V/50Hz	5°C - 550°C	4.6 x 7.7 x 15.4 in. (11.75 x 19.7 x 39.1 cm)
89090-204	PC-400D	100V/60Hz	5°C - 550°C	4.3 x 7.7 x 11 in. (10.8 x 19.7 x 28 cm)
89090-186	PC-600D	100V/60Hz	5°C - 550°C	4.6 x 7.7 x 15.4 in. (11.75 x 19.7 x 39.1 cm)
89090-210	PC-400D	230V/50Hz	5°C - 550°C	4.3 x 7.7 x 11 in. (10.8 x 19.7 x 28 cm)
89090-192	PC-600D	230V/50Hz	5°C - 550°C	4.6 x 7.7 x 15.4 in. (11.75 x 19.7 x 39.1 cm)



Model PC-410D



Model PC-420D

Digital Stirring Hot Plates

VWR Cat. No.	Model	Voltage	Stir Range (rpm)	Dimensions (L x W x D)
89090-244	PC-410D	120V/60Hz	60 - 1,150	4.3 x 7.7 x 11 in. (10.8 x 19.7 x 28 cm)
89090-238	PC-610D	120V/60Hz	60 - 1,150	4.6 x 7.7 x 15.4 in. (11.75 x 19.7 x 39.1 cm)
89090-248	PC-410D	230V/50Hz	60 - 1,150	4.3 x 7.7 x 11 in. (10.8 x 19.7 x 28 cm)
89090-240	PC-610D	230V/50Hz	60 - 1,150	4.6 x 7.7 x 15.4 in. (11.75 x 19.7 x 39.1 cm)
89090-246	PC-410D	100V/60Hz	60 - 1,150	4.3 x 7.7 x 11 in. (10.8 x 19.7 x 28 cm)
89090-236	PC-610D	100V/60Hz	60 - 1,150	4.6 x 7.7 x 15.4 in. (11.75 x 19.7 x 39.1 cm)
89090-250	PC-410D	230V/50Hz	60 - 1,150	4.3 x 7.7 x 11 in. (10.8 x 19.7 x 28 cm)
89090-242	PC-610D	230V/50Hz	60 - 1,150	4.6 x 7.7 x 15.4 in. (11.75 x 19.7 x 39.1 cm)

Digital Stirring Hot Plates

VWR Cat. No.	Model	Voltage*	Temperature/ Stir Range (rpm)	Dimensions (L x W x D)
89090-216	PC-420D	120V/60Hz	5°C - 550°C/60 - 1,150	4.3 x 7.7 x 11 in. (10.8 x 19.7 x 28 cm)
89090-212†	PC-420D	120V/60Hz	5°C - 550°C/60 - 1,150	4.3 x 7.7 x 11 in. (10.8 x 19.7 x 28 cm)
89090-198	PC-620D	120V/60Hz	5°C - 550°C/60 - 1,150	4.6 x 7.7 x 15.4 in. (11.75 x 19.7 x 39.1 cm)
89090-194†	PC-620D	120V/60Hz	5°C - 550°C/60 - 1,150	4.6 x 7.7 x 15.4 in. (11.75 x 19.7 x 39.1 cm)
89090-218	PC-420D	230V/50Hz	5°C - 550°C/60 - 1,150	4.3 x 7.7 x 11 in. (10.8 x 19.7 x 28 cm)
89090-200	PC-620D	230V/50Hz	5°C - 550°C/60 - 1,150	4.6 x 7.7 x 15.4 in. (11.75 x 19.7 x 39.1 cm)
89090-214	PC-420D	100V/60Hz	5°C - 550°C/60 - 1,150	4.3 x 7.7 x 11 in. (10.8 x 19.7 x 28 cm)
89090-196	PC-620D	100V/60Hz	5°C - 550°C/60 - 1,150	4.6 x 7.7 x 15.4 in. (11.75 x 19.7 x 39.1 cm)
89090-220	PC-420D	230V/50Hz	5°C - 550°C/60 - 1,150	4.3 x 7.7 x 11 in. (10.8 x 19.7 x 28 cm)
89090-202	PC-620D	230V/50Hz	5°C - 550°C/60 - 1,150	4.6 x 7.7 x 15.4 in. (11.75 x 19.7 x 39.1 cm)

† Cat. Nos. 89090-212 and 89090-194 include the 120V stirring hot plate plus temperature controller, support rod, and stir bar retriever.

Corning® Analog Hot Plates, Stirring Hot Plates, and Stirrers

PC-200 Hot Plates

Corning's exclusive glass-ceramic Pyroceram® top is standard.

- ▶ Micro-chemistry size
- ▶ Hot top indicator light
- ▶ 2-year warranty



VWR Cat. No.	Model	Power	Top Size	Temperature	Weight	Dimensions (H x W x D)
89090-982	PC-200	120V/60Hz/ 253W/2.1A	4" x 5"	77°F - 896°F (25°C - 480°C)	4 lbs. (1.8 kg)	4.4 x 5.8 x 7.3 in. (11.2 x 14.7 x 18.5 cm)
89090-984*	PC-200	230V/50Hz/ 253W/1.1A	4" x 5"	77°F - 896°F (25°C - 480°C)	4 lbs. (1.8 kg)	4.4 x 5.8 x 7.3 in. (11.2 x 14.7 x 18.5 cm)

*230 volt 6796 hot plate comes with UK plug.

Corning Scholar PC-170 Hot Plate



An economically priced hot plate that has a white enameled steel top plate that provides heat transfer up to 360°C. Dual heat shields dissipate heat and keep the case cool to the touch.

- ▶ Compact, saves on bench space
- ▶ UL/CUL approved
- ▶ 1-year warranty

VWR Cat. No.	Model	Power	Top Size	Temperature	Weight	Dimensions (H x W x D)
89091-700	PC-170	120V/60Hz/ 250W/2.1A	5" x 5"	140°F - 680°F (60°C - 360°C)	3 lbs. (1.3 kg)	4 x 5 x 5 in. (10.2 x 12.7 x 12.7 cm)

PC-220 Hot Plate/Stirrers



Hot plate/stirrer units come with Corning's exclusive Pyroceram® top.

- ▶ Micro-chemistry size
- ▶ Hot top indicator light
- ▶ Glass ceramic top
- ▶ 2-year warranty

VWR Cat. No.	Model	Power	Top Size	Stir Range (rpm)	Temperature	Weight	Dimensions (L x W x D)
89090-994	PC-220	120V/60Hz/ 283W/2.4A	4" x 5"	60 - 1,100	77°F - 896°F (25°C - 480°C)	5.0 lbs. (2.3 kg)	4.4 x 5.8 x 7.3 in. (11.2 x 14.7 x 18.5 cm)
89090-996*	PC-220	230V/50Hz/ 288W/1.3A	4" x 5"	60 - 1,100	77°F - 896°F (25°C - 480°C)	5.0 lbs. (2.3 kg)	4.4 x 5.8 x 7.3 in. (11.2 x 14.7 x 18.5 cm)

*230 volt 6796 hot plate/stirrer comes with UK plug.

PC-210 Stirrers



PC-210 stirrers come with Corning's Pyroceram top.

- ▶ Micro-chemistry size
- ▶ 2-year warranty

VWR Cat. No.	Model	Power	Top Size	Stir Range (rpm)	Weight	Dimensions (L x W x D)
89090-988	PC-210	120V/60Hz/ 33W/0.3A	4" x 5"	60 - 1,100	4.5 lbs. (2 kg)	4.4 x 5.8 x 7.3 in. (11.2 x 14.7 x 18.5 cm)
89090-990*	PC-210	230V/50Hz/ 38W/0.17A	4" x 5"	60 - 1,100	4.5 lbs. (2 kg)	4.4 x 5.8 x 7.3 in. (11.2 x 14.7 x 18.5 cm)
89090-986	PC-210	100V/60Hz/ 30W/0.3A	4" x 5"	60 - 1,100	4.5 lbs. (2 kg)	4.4 x 5.8 x 7.3 in. (11.2 x 14.7 x 18.5 cm)

*230 volt 6796 stirrer comes with UK plug.

PC-611 Stirrer



The PC-611 is designed to stir large volumes of liquid with ease. The stirrer is designed for 5 gallon vessels (19L) but can stir up to 10 gallons. This powerful stirring is achieved with a very compact design that conserves bench space. The stirrer uses a magnet that is constructed out of rare earth metals for exceptional coupling strength. The magnet's strength also centers the stir bar quickly inside the vessel. Heavy duty motor and rugged plastic (ABS) top will provide years of reliable service. UL/CUL approved, one year warranty. Special features: The PC-611 achieves vigorous stirring with a more compact unit at a lower cost than competitive units. This high volume stirrer can handle many applications that previously required an overhead stirrer.

VWR Cat. No.	Model	Power	Top Size	Stir Range (rpm)	Weight	Dimensions (L x W x D)
34103-633	PC-611	120V/50-60Hz/ 144W/1.2A	11" x 11"	100 - 1,500	11.0 lbs. (5 kg)	4.8 x 12.0 x 14.4 in. (1.9 x 4.7 x 5.7 cm)

Corning® Scholar PC-171 Stirrer



The Corning Scholar PC-171 stirrer provides compact design, vigorous stirring with alternating current motor for longer life and rugged construction. UL/CUL approved, 1-year warranty.

VWR Cat. No.	Model	Power	Top Size	Stir Range (rpm)	Weight	Dimensions (L x W x D)
58941-256	PC-171	120V/60Hz/ 30W/0.25A	5" x 5"	100 - 1,600	4 lbs. (1.8 kg)	3.2 x 5.0 x 5.0 in. (1.3 x 2 x 2 cm)

SS2I Stirrer



One-position slow speed stirrer with integral control to accommodate up to a 2L vessel. One-position model allows the user to spend less and save valuable bench space compared to multiple-position units. Integral speed control and glass-filled resin platform material.

VWR Cat. No.	Model	Power	Speed Range (rpm)	No. Pos.	Nom. Stir Vol. per Pos.	Max. Vessel Diam. (mm)	Dimensions (mm) (L x W x D)	Weight (kg)	Motor Type
89091-042	SS2I	120V/ 60Hz	10 - 150	1	2L	150	150 x 150 x 70	0.9	DC, stepper

SS10I Stirrer



One-position slow speed stirrer with integral control to accommodate up to a 10L vessel. Smooth reliable stirring at slow speeds helps promote healthy cell growth. Integral speed control and glass-filled resin platform material.

VWR Cat. No.	Model	Power	Speed Range (rpm)	No. Pos.	Nom. Stir Vol. per Pos.	Max. Vessel Diam. (mm)	Dimensions (mm) (L x W x D)	Weight (kg)	Motor Type
89091-040	SS10I	120V/ 60Hz	10 - 150	1	10L	280	260 x 260 x 70	2.6	DC, stepper

SS4I Stirrer



Four-position slow speed stirrer with integral control to accommodate up to four 1L vessels. Multiple positions allow the user to duplicate stirring conditions in up to four vessels. Integral speed control and glass-filled resin platform material.

VWR Cat. No.	Model	Power	Speed Range (rpm)	No. Pos.	Nom. Stir Vol. per Pos.	Max. Vessel Diam. (mm)	Dimensions (mm) (L x W x D)	Weight (kg)	Motor Type
89091-044	SS4I	120V/ 60Hz	10 - 150	4	1L	130	260 x 260 x 70	3	DC, stepper



MP4I, MP5I, and MP9I Multiple Position Stirrers with Integral Control

Corning now offers stirrers that stir up to nine vessels at the same time. These stirring platforms come in 4-, 5-, and 9-position models. The unit's magnets and DC motor provide smooth, well-coupled stirring up to 2,000 rpm. The speed of all positions on the units is set simultaneously with the integral knob. Integral speed control and glass-filled resin platform material.

VWR Cat. No.	Model	Power	Speed Range (rpm)	No. Pos.	Nom. Stir Vol. per Pos.	Max. Vessel Diam. (mm)	Dimensions (mm) (L x W x D)	Weight (kg)	Motor Type
58941-276	MP4I	120V/60Hz	350 - 2,000	4	1L	130	260 x 260 x 70	3.1	DC
58941-278	MP5I	120V/60Hz	350 - 2,000	5	400 mL	95	260 x 260 x 70	3.2	DC
58941-280	MP9I	120V/60Hz	350 - 2,000	9	250 mL	75	260 x 260 x 70	3.8	DC

Stir bar, 3/8" x 1"
(Cat. No. 33920-693)



Stir bar, 3/8" x 2"
(Cat. No. 33920-671)



Stir bar, 3/4" x 3"
(Cat. No. 58941-338)

Stir Bars and Stir Bar Retriever

Corning® magnetic stir bars are polytetrafluoroethylene (PTFE)-coated for increased chemical resistance. The Corning stir bar retriever contains a strong magnet to remove a stir bar from all glass and plastic containers used in the laboratory. The container must be taken off the magnetic stirrer before using the retriever as the high powered magnet in the stirrer cancels out the one in the retriever. The handle is designed for ergonomic and easy retrieval.

VWR Cat. No.	Description	Use with Model	Qty/Pk	Qty/Cs
33920-671	Stir bar, 3/8" x 1"	PC-210/220/410D/420D	1	1
33920-693	Stir bar, 3/8" x 2"	PC-610D/620D	1	1
58941-338	Stir bar, 3/4" x 3"	PC-611	1	1
189090-234	Magnetic stir bar retriever	All Corning stirrers and hot plate/stirrers	1	1

Temperature Controller and Accessories

When used with the digital hot plate or stirring hot plate, the external temperature controller ensures precision temperature accuracy of the liquid inside the vessel as opposed to the temperature of the hot plate top.

VWR Cat. No.	Description	Use with Model
89090-224*	Temperature controller for digital hot plates and stirring hot plates	PC-400D/420D/600D/620D
89090-222	Accessory kit Includes: External temperature controller (Cat. No. 6795PR), 18" support rods (Cat. No. 89090-174), and stir bar retriever (Cat. No. 89090-234)	PC-400D/420D/600D/620D
89090-174	Stainless steel support rod, two 9" (45.7 cm) rods, 5/16" diameter. Rods can be screwed together to 18"	All digital and PC-200/210/220
89091-002	Stainless steel support rod, 24" (61.0 cm), 7/16" diameter	PC-600D/610D/620D
89090-998	Stainless steel support rod, 12" (30.5 cm), 5/16" diameter	All digital and PC-200/210/220
89089-830†	Boss head clamp for use with 5/16" support rod and holding rod	All hot plates with 5/16" or smaller support rod
89090-176	Holding rod, thermocouple, stainless steel	All hot plates

*Temperature controllers are not available for use with stirrer only units.

†Bosshead clamps to support rod; holding rod connects to bosshead. Temperature controller slides into holding rod.



Magnetic stir bar retriever
(Cat. No. 89090-234)



Digital hot plate accessories

Catalog Number Index

VWR – Corning

VWR Cat. No.	Corning Cat. No.	Page No.	VWR Cat. No.	Corning Cat. No.	Page No.	VWR Cat. No.	Corning Cat. No.	Page No.	VWR Cat. No.	Corning Cat. No.	Page No.
10018-880	480151	11	58941-256	6795-171	17	89090-192	6798-600D	14	89133-512	6775	8
10018-882	480152	11	58941-276	440824	18	89090-194	6795-620KIT	16	89133-514	6780-NP	9
10018-884	480153	12	58941-278	440825	18	89090-196	6797-620D	16	89133-516	480108	9
10018-886	480154	12	58941-280	440826	18	89090-198	6795-620D	16	89133-518	480109	9
10018-888	480155	12	75989-420	6886-DB	13	89090-200	6796-620D	16	89133-520	480113	9
10018-890	480156	12	75989-422	6887-DB	13	89090-202	6798-620D	16	89133-522	480114	9
10018-892	480157	12	75989-424	6888-DB	13	89090-204	6797-400D	14	89133-524	6780-FP	9
10018-894	480158	12	75989-426	6895-FB	13	89090-206	6795-400D	14	89133-526	6780-4	8
10020-652	480144	11	75989-428	6896-FB	13	89090-208	6796-400D	14	89133-532	480117	14
10020-654	480145	11	75989-430	6897-FB	13	89090-210	6798-400D	14	89133-534	480118	14
10020-656	480146	11	75989-432	6898-FB	13	89090-212	6795-420KIT	16	89133-536	480119	14
10020-658	480147	11	75990-496	6875-SB	13	89090-214	6797-420D	16	89137-790	4078	3
10020-660	480148	11	75990-498	6876-SB	13	89090-216	6795-420D	16	89137-792	4079	3
10020-662	480149	11	75990-500	6877-SB	13	89090-218	6796-420D	16	89137-794	4088	3
10020-664	480150	11	75990-502	6878-SB	13	89090-220	6798-420D	16	89137-802	480100	8
10020-666	480159	12	75990-504	6885-DB	13	89090-222	6795-KIT	18	89137-804	480101	8
10020-668	480160	12	76163-522	401025	6	89090-224	6795-PR	18	89137-806	480102	8
10020-670	480161	12	76163-546	6770-RTA.5	6	89090-234	6970SR	18	89137-808	480103	8
10020-672	480162	12	76163-548	6770-RTA.20	6	89090-236	6797-610D	16	89137-810	480104	8
10020-674	480163	12	76163-550	6770-RTA.25	6	89090-238	6795-610D	16	89137-812	480105	8
10020-676	480164	12	76163-552	6770	6	89090-240	6796-610D	16	89137-814	480106	8
10020-678	480165	12	76163-554	6770-RT	6	89090-242	6798-610D	16	89137-816	480107	8
10020-680	480166	12	76163-556	6770-RTS	6	89090-244	6795-410D	16	89137-818	480110	9
10020-682	480167	9	76181-474	6620	5	89090-246	6797-410D	16	89137-820	480111	9
10020-684	480168	12	76181-476	6632	5	89090-248	6796-410D	16	89137-822	480112	9
10020-686	480169	12	76181-478	6633	5	89090-250	6798-410D	16	89137-824	480115	9
10020-688	480170	12	76181-480	6625	5	89090-982	6795-200D	16	89137-826	480116	14
10020-976	6750	12	76181-482	6626	5	89090-984	6796-200	16	89137-828	480120	14
10020-980	6753	12	76181-486	6628	5	89090-986	6797-210	16	89137-830	480121	14
10020-984	6783	13	76181-488	6629	5	89090-988	6795-210	16	89137-832	480122	14
10020-986	6784	13	76181-490	6630	5	89090-990	6796-210	16	89137-834	480123	14
10020-988	6790	11	76181-492	6631	5	89090-994	6595-220	16	89137-836	480124	14
10023-900	4099	4	76181-506	6621	5	89090-996	6796-220	16	89137-838	480125	14
10023-902	4991	4	76181-508	6622	5	89090-998	400084	18	89137-840	480126	14
10023-904	4992	4	76181-510	6623	5	89091-002	409831	18	89137-842	480127	14
10023-906	4994	4	76181-512	6624	5	89091-040	440812	17	89137-844	480128	14
10023-908	4995	4	76193-270	4217	5	89091-042	440811	17	89137-846	480129	14
10023-910	4996	4	76193-272	4218	5	89091-044	440814	17	89137-848	480130	14
10024-980	4997	4	76193-274	4219	5	89091-050	4930	4	89137-850	480131	14
10804-766	4993	4	76200-230	6703	10	89091-700	6795-170	16	89137-852	480132	14
29442-474	4871	4	76200-232	6704	10	89093-500	9016	4	89137-854	480133	14
29442-476	4872	4	76200-234	6705	10	89133-478	4070	3	89184-618	480134	6
29442-478	4873	4	76200-236	6706	10	89133-480	4071	3	89184-620	480135	6
29442-482	4880	3	76200-268	6709	10	89133-482	4072	3	89187-013	4069	3
29442-484	4888	3	76200-270	6710	10	89133-484	4073	3	89204-722	6755	7
29442-524	4876	4	76200-272	48010	10	89133-486	4074	3	89204-724	480136	7
29442-526	4877	4	76200-274	48011	10	89133-488	4075	3	89204-726	480137	7
29442-528	4878	4	76200-276	48012	10	89133-490	4080	3	89204-728	480139	7
29442-530	7605	4	76200-994	6749	2	89133-492	4081	3	89204-730	480138	7
29442-532	7606	4	76299-416	480200	2	89133-494	4082	3	89204-732	480140	7
29442-534	7610	4	89089-830	440140	18	89133-496	4083	3	89204-734	480141	7
29443-002	4931	4	89090-174	440129	18	89133-498	4084	3	89204-736	480142	7
33920-671	401435	18	89090-176	440141	18	89133-500	4085	3	89235-045	480143	7
33920-693	400430	18	89090-186	6797-600D	14	89133-502	4086	3			
34103-633	6795-611	17	89090-188	6795-600D	14	89133-504	4087	3			
53504-035	4870	4	89090-190	6796-600D	14	89133-510	6765-HS	6			

Catalog Number Index

Corning – VWR

Corning Cat. No.	VWR Cat. No.	Page No.	Corning Cat. No.	VWR Cat. No.	Page No.	Corning Cat. No.	VWR Cat. No.	Page No.	Corning Cat. No.	VWR Cat. No.	Page No.
4069.....	89187-013	3	6705.....	76200-234	10	6798-600D.....	89090-192	14	480119.....	89133-536	14
4070.....	89133-478	3	6706.....	76200-236	10	6798-610D.....	89090-242	16	480120.....	89137-828	14
4071.....	89133-480	3	6709.....	76200-268	10	6798-620D.....	89090-202	16	480121.....	89137-830	14
4072.....	89133-482	3	6710.....	76200-270	10	6875-SB.....	75990-496	13	480122.....	89137-832	14
4073.....	89133-484	3	6749.....	76200-994	2	6876-SB.....	75990-498	13	480123.....	89137-834	14
4074.....	89133-486	3	6750.....	10020-976	12	6877-SB.....	75990-500	13	480124.....	89137-836	14
4075.....	89133-488	3	6753.....	10020-980	12	6878-SB.....	75990-502	13	480125.....	89137-838	14
4078.....	89137-790	3	6755.....	89204-722	7	6885-DB.....	75990-504	13	480126.....	89137-840	14
4079.....	89137-792	3	6765-HS.....	89133-510	6	6886-DB.....	75989-420	13	480127.....	89137-842	14
4080.....	89133-490	3	6770.....	76163-552	6	6887-DB.....	75989-422	13	480128.....	89137-844	14
4081.....	89133-492	3	6770-RT.....	76163-554	6	6888-DB.....	75989-424	13	480129.....	89137-846	14
4082.....	89133-494	3	6770-RTA.20.....	76163-548	6	6895-FB.....	75989-426	13	480130.....	89137-848	14
4083.....	89133-496	3	6770-RTA.25.....	76163-550	6	6896-FB.....	75989-428	13	480131.....	89137-850	14
4084.....	89133-498	3	6770-RTA.5.....	76163-546	6	6897-FB.....	75989-430	13	480132.....	89137-852	14
4085.....	89133-500	3	6770-RTS.....	76163-556	6	6898-FB.....	75989-432	13	480133.....	89137-854	14
4086.....	89133-502	3	6775.....	89133-512	8	6970SR.....	89090-234	18	480134.....	89184-618	6
4087.....	89133-504	3	6780-4.....	89133-526	8	7605.....	29442-530	4	480135.....	89184-620	6
4088.....	89137-794	3	6780-FP.....	89133-524	9	7606.....	29442-532	4	480136.....	89204-724	7
4099.....	10023-900	4	6780-NP.....	89133-514	9	7610.....	29442-534	4	480137.....	89204-726	7
4217.....	76193-270	5	6783.....	10020-984	13	9016.....	89093-500	4	480138.....	89204-730	7
4218.....	76193-272	5	6784.....	10020-986	13	48010.....	76200-272	10	480139.....	89204-728	7
4219.....	76193-274	5	6790.....	10020-988	11	48011.....	76200-274	10	480140.....	89204-732	7
4870.....	53504-035	4	6795-170.....	89091-700	16	48012.....	76200-276	10	480141.....	89204-734	7
4871.....	29442-474	4	6795-171.....	58941-256	17	400084.....	89090-998	18	480142.....	89204-736	7
4872.....	29442-476	4	6795-200D.....	89090-982	16	400430.....	33920-693	18	480143.....	89235-045	7
4873.....	29442-478	4	6795-210.....	89090-988	16	401025.....	76163-522	6	480144.....	10020-652	11
4876.....	29442-524	4	6795-400D.....	89090-206	14	401435.....	33920-671	18	480145.....	10020-654	11
4877.....	29442-526	4	6795-410D.....	89090-244	16	409831.....	89091-002	18	480146.....	10020-656	11
4878.....	29442-528	4	6795-420D.....	89090-216	16	440129.....	89090-174	18	480147.....	10020-658	11
4880.....	29442-482	3	6795-420KIT.....	89090-212	16	440140.....	89089-830	18	480148.....	10020-660	11
4888.....	29442-484	3	6795-600D.....	89090-188	14	440141.....	89090-176	18	480149.....	10020-662	11
4930.....	89091-050	4	6795-610D.....	89090-238	16	440811.....	89091-042	17	480150.....	10020-664	11
4931.....	29443-002	4	6795-611.....	34103-633	17	440812.....	89091-040	17	480151.....	10018-880	11
4991.....	10023-902	4	6795-620D.....	89090-198	16	440814.....	89091-044	17	480152.....	10018-882	11
4992.....	10023-904	4	6795-620KIT.....	89090-194	16	440824.....	58941-276	18	480153.....	10018-884	12
4993.....	10804-766	4	6795-KIT.....	89090-222	18	440825.....	58941-278	18	480154.....	10018-886	12
4994.....	10023-906	4	6795-PR.....	89090-224	18	440826.....	58941-280	18	480155.....	10018-888	12
4995.....	10023-908	4	6796-200.....	89090-984	16	480100.....	89137-802	8	480156.....	10018-890	12
4996.....	10023-910	4	6796-210.....	89090-990	16	480101.....	89137-804	8	480157.....	10018-892	12
4997.....	10024-980	4	6796-220.....	89090-996	16	480102.....	89137-806	8	480158.....	10018-894	12
6595-220.....	89090-994	16	6796-400D.....	89090-208	14	480103.....	89137-808	8	480159.....	10020-666	12
6620.....	76181-474	5	6796-410D.....	89090-248	16	480104.....	89137-810	8	480160.....	10020-668	12
6621.....	76181-506	5	6796-420D.....	89090-218	16	480105.....	89137-812	8	480161.....	10020-670	12
6622.....	76181-508	5	6796-600D.....	89090-190	14	480106.....	89137-814	8	480162.....	10020-672	12
6623.....	76181-510	5	6796-610D.....	89090-240	16	480107.....	89137-816	8	480163.....	10020-674	12
6624.....	76181-512	5	6796-620D.....	89090-200	16	480108.....	89133-516	9	480164.....	10020-676	12
6625.....	76181-480	5	6797-210.....	89090-986	16	480109.....	89133-518	9	480165.....	10020-678	12
6626.....	76181-482	5	6797-400D.....	89090-204	14	480110.....	89137-818	9	480166.....	10020-680	12
6628.....	76181-486	5	6797-410D.....	89090-246	16	480111.....	89137-820	9	480167.....	10020-682	9
6629.....	76181-488	5	6797-420D.....	89090-214	16	480112.....	89137-822	9	480168.....	10020-684	12
6630.....	76181-490	5	6797-600D.....	89090-186	14	480113.....	89133-520	9	480169.....	10020-686	12
6631.....	76181-492	5	6797-610D.....	89090-236	16	480114.....	89133-522	9	480170.....	10020-688	12
6632.....	76181-476	5	6797-620D.....	89090-196	16	480115.....	89137-824	9	480200.....	76299-416	2
6633.....	76181-478	5	6798-400D.....	89090-210	14	480116.....	89137-826	14			
6703.....	76200-230	10	6798-410D.....	89090-250	16	480117.....	89133-532	14			
6704.....	76200-232	10	6798-420D.....	89090-220	16	480118.....	89133-534	14			

Warranty/Disclaimer: Unless otherwise specified, all products are for research use only. Not intended for use in diagnostic or therapeutic procedures. Corning Life Sciences makes no claims regarding the performance of these products for clinical or diagnostic applications.

CORNING

For additional product or technical information, visit vwr.com/corning, call 1.800.932.5000, or contact your VWR representative.



800 932 5000 | VWR.COM

Prices, product, and/or services details are current when published and subject to change without notice. | Certain products or services may be limited by federal, state, provincial, or local regulations. | VWR, part of Avantor, makes no claims or warranties concerning sustainable/green products. Any claims concerning sustainable/green products are the sole claims of the manufacturer and not those of VWR International, LLC and/or Avantor, Inc. or affiliates. All prices are in US dollars unless otherwise noted. Offers valid in US and Canada, void where prohibited by law or company policy, while supplies last. | Trademarks are owned by Avantor, Inc. or its affiliates, unless otherwise noted. | Visit vwr.com to view our privacy policy, trademark owners, and additional disclaimers. © 2020 Avantor, Inc. All rights reserved.