



White Knight
Engineered Products

9525 Monroe Road
Suite 100
Charlotte NC 28270

Product Specification

Style Number: 12 L4 4967 82PC 3P

Phone: 704.542.6876 Fax: 704.910.8065 customerservice@wkep.com

Revision: A
Release Date: 03.02.17

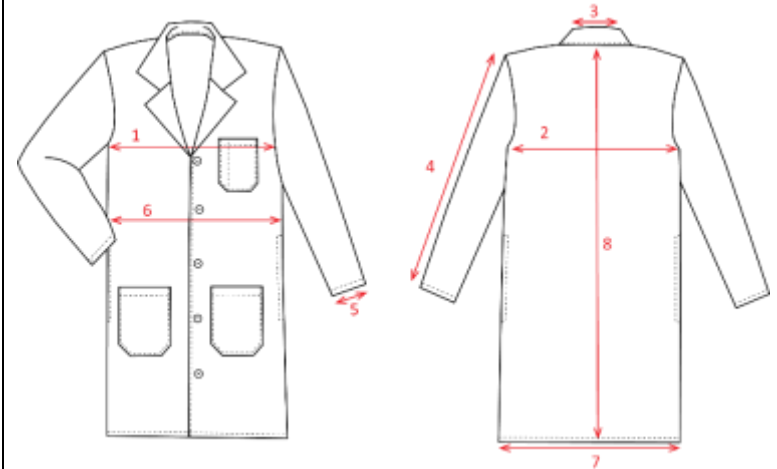
PO # _____
Inspected by _____

General Description

Garment Type	Labcoat
Collar	Lapel
Sleeves	Set- In
Sleeve Opening	Plain
Front Enclosure	Buttons
Fabric	80% Poly / 20% Cotton
Thread	100% Poly
Seams	Overcast

Construction Details

- 2 Outside Waist Pockets 7" W x 7" D
- Left breast Pocket 5 1/2" W X 5 1/2" D with 1" Pencil Slot
- Pockets Start & Finish will be Bar-tacked
- Plain Hemmed Sleeves
- Front Closure is by means of 5 Buttons. First Button will be Set 8" Below Collar Seam, all remaining will be Placed 5" Apart
- Side Vent Openings
- Label Sewn in Center Back Collar Seam
- Lapel Collar will be single needle set and stitched down
- Single needle hemmed Bottom finishing 3/4" wide with a 1/4" turn under
- Men's Garment Closure Left Over Right



Finished Measurements

Ref	Feature	2XS	XS	S	M	L	XL	2XL	3XL	4XL	5XL	Actual
1	Chest	36	40	44	48	51	55	59	64	68	72	
2	Across Back	17 1/2	19 1/2	21 1/2	23 1/2	25 1/2	27	29	31	33	35	
3	Collar	15	15	15	15	16	18	18 1/2	18 1/2	18 1/2	19	
4	Sleeve Outseam	23	23 1/2	24	24	25	25	25	25	26	26	
5	Sleeve Opening	10	10 1/2	11	11 1/2	12	13	13	14	14	14	
6	Waist	37	41	45	49	52	57	61	66	70	74	
7	Sweep	42	45 1/2	49	53	56	61	64	69	72	76	
8	Length	39	39	39	39	39	39	39	39	39	39	

Tolerance

<12 inches	+ / 1/2 Inch
>12 inches	+ / 1 Inch