

VWR[®] ELECTRONIC PIPETTORS

Lightweight Ergonomics

Easy-to-Use

Precise and Reliable



A FULL LINE OF ELECTRONIC PIPETTERS

Available in twelve models covering volumes from 0.5µL to 1200µL including multi-channel pipettors.

Ease-of-Use

Features only two buttons to enable an easy one-handed programming and a quick pipetting cycle start.

Choose your preferred mode using the push-button:

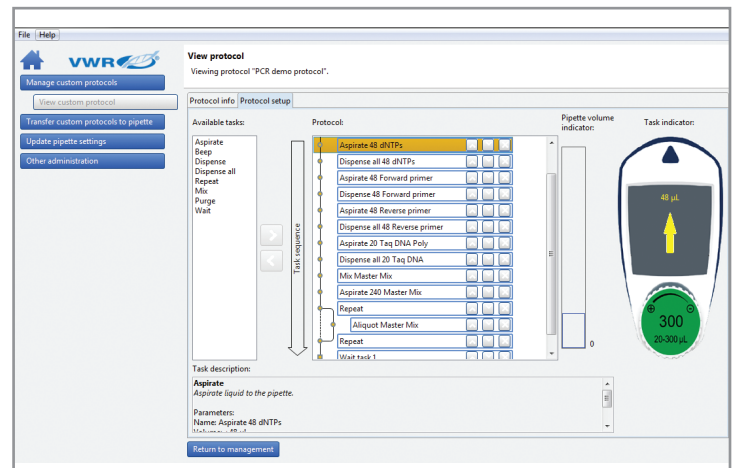
- Pipet (Standard Mode)
- Reverse
- Repetitive
- Mix
- Custom Mode

Lightweight - Perfectly Balanced

Requires virtually no force to significantly reduce RSI (Repetitive Strain Injury) associated with routine work.

Custom Mode For Specific Application

Create, transfer, and store your own pipetting tasks using VWR® Protocol Builder Software.





FEATURES

Available Range

- Four single channels (from 0.5 μ L to 1200 μ L)
- Eight multi-channels (from 0.5 μ L to 1200 μ L)

Only Two Buttons and Five Pipetting Modes

Intuitive interface with five different modes:

- PIPET, REPETITIVE, MIX, REVERSE, and CUSTOM mode
- No need to change pipetting techniques
- Custom mode allows protocol creation

Ergonomic / Countered Shape

- Comfortable in either left or right hand
- 360° rotating manifold

Fully Motorized Piston Drive

For an even and regular sample delivery across each channel.

Use While Charging

Can be used while charging without compromising performance.

Secure Tip Fit/Ejection

Tip holders are designed for a secure tip fit and easy ejection thanks to a curved ejector bar.

Two-Year Warranty

Pipettors are supplied with a Certificate of Conformity including a two-year warranty.

Maximum Permissible Errors (Standard Pipetting Mode)							
Description	Cat. No.	Volume Range, µL	Volume	VWR Electronic Pipettors		ISO 8655-2	
				Systematic Error, µL	Random Error, µL	Systematic Error, µL	Random Error, µL
Single Channel	10827-884	0.5 - 10	0.5	±0.044	≤0.014	±0.12	≤0.08
			1	±0.028	≤0.013	±0.12	≤0.08
			5	±0.066	≤0.022	±0.12	≤0.08
			10	±0.088	≤0.028	±0.12	≤0.08
Single Channel	10827-918	2 - 20	2	±0.083	≤0.028	±0.2	≤0.1
			10	±0.110	≤0.039	±0.2	≤0.1
			20	±0.165	≤0.055	±0.2	≤0.1
Single Channel	10827-920	20 - 300	20	±0.88	≤0.18	±4.0	≤1.5
			30	±0.77	≤0.22	±4.0	≤1.5
			150	±0.99	≤0.25	±4.0	≤1.5
			300	±1.16	≤0.33	±4.0	≤1.5
Single Channel	10827-922	100 - 1200	100	±2.8	≤0.4	±16	≤6.0
			120	±2.6	≤0.4	±16	≤6.0
			600	±4.0	≤0.9	±16	≤6.0
			1200	±6.6	≤1.3	±16	≤6.0
8-Channel 12-Channel	10827-924 10827-932	0.5 - 10	0.5	±0.06	≤0.022	±0.24	≤0.16
			1	±0.04	≤0.022	±0.24	≤0.16
			5	±0.09	≤0.044	±0.24	≤0.16
			10	±0.11	≤0.066	±0.24	≤0.16
8-Channel 12-Channel	10827-926 10827-934	1 - 20	1	±0.09	≤0.055	±0.4	≤0.2
			10	±0.17	≤0.110	±0.4	≤0.2
			20	±0.28	≤0.132	±0.4	≤0.2
8-Channel 12-Channel	10827-928 10827-936	10 - 300	10	±1.10	≤0.20	±8.0	≤3.0
			30	±1.10	≤0.20	±8.0	≤3.0
			150	±1.65	≤0.413	±8.0	≤3.0
			300	±2.64	≤0.50	±8.0	≤3.0
8-Channel 12-Channel	10827-930 10827-938	50 - 1200	50	±4.4	≤0.8	±32	≤12
			120	±4.4	≤0.8	±32	≤12
			600	±6.6	≤1.7	±32	≤12
			1200	±10.6	≤2.0	±32	≤12

Complete Your Equipment With Accessories

VWR CAROUSEL Pipettor STAND + VWR CHARGING STAND ADAPTER

The VWR® Charging Stand Adapter has been designed to fit perfectly in the VWR® Carousel Pipettor Stand. It combines two features in one, both holding and charging the pipettor at the same time.

Description	Cat. No.
VWR Carousel Pipettor Stand	10827-940
VWR Charging Stand Adapter	10827-942



1.800.932.5000 | vwr.com

Prices and product details are current when published; subject to change without notice. | Certain products may be limited by federal, state, provincial, or local regulations. | VWR makes no claims or warranties concerning sustainable/green products. Any claims concerning sustainable/green products are the sole claims of the manufacturer and not those of VWR International, LLC. All prices are in US dollars unless otherwise noted. Offers valid in US and Canada, void where prohibited by law or company policy, while supplies last. | VWR, the VWR logo and variations on the foregoing are registered (®) or unregistered trademarks and service marks, of VWR International, LLC and its related companies. All other marks referenced are registered by their respective owner(s). | Visit vwr.com to view our privacy policy, trademark owners and additional disclaimers. ©2017 VWR International, LLC. All rights reserved.