

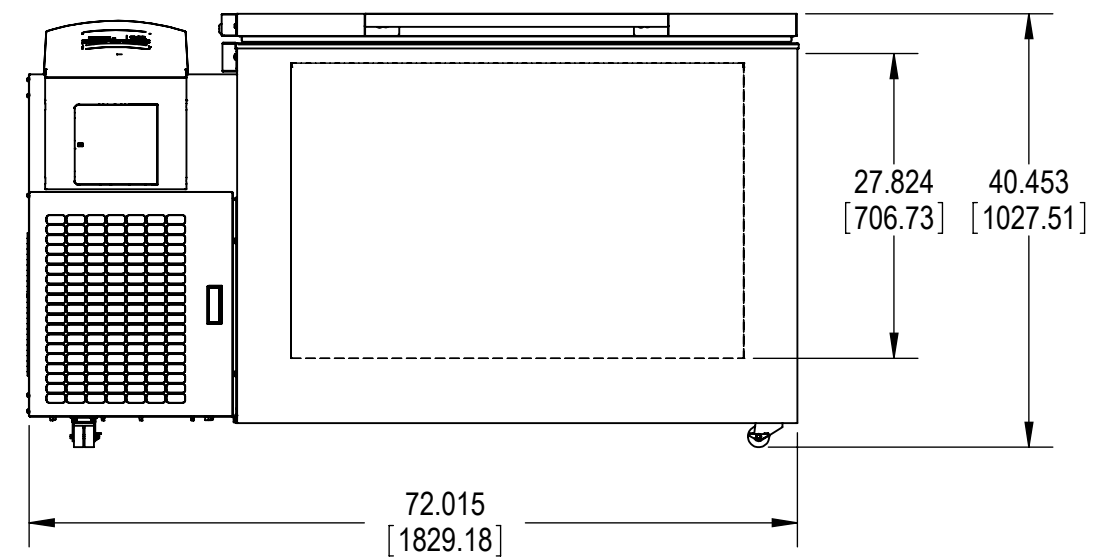
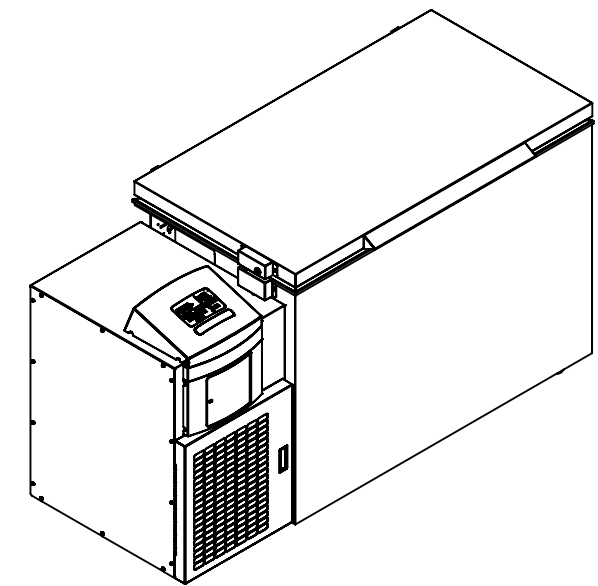
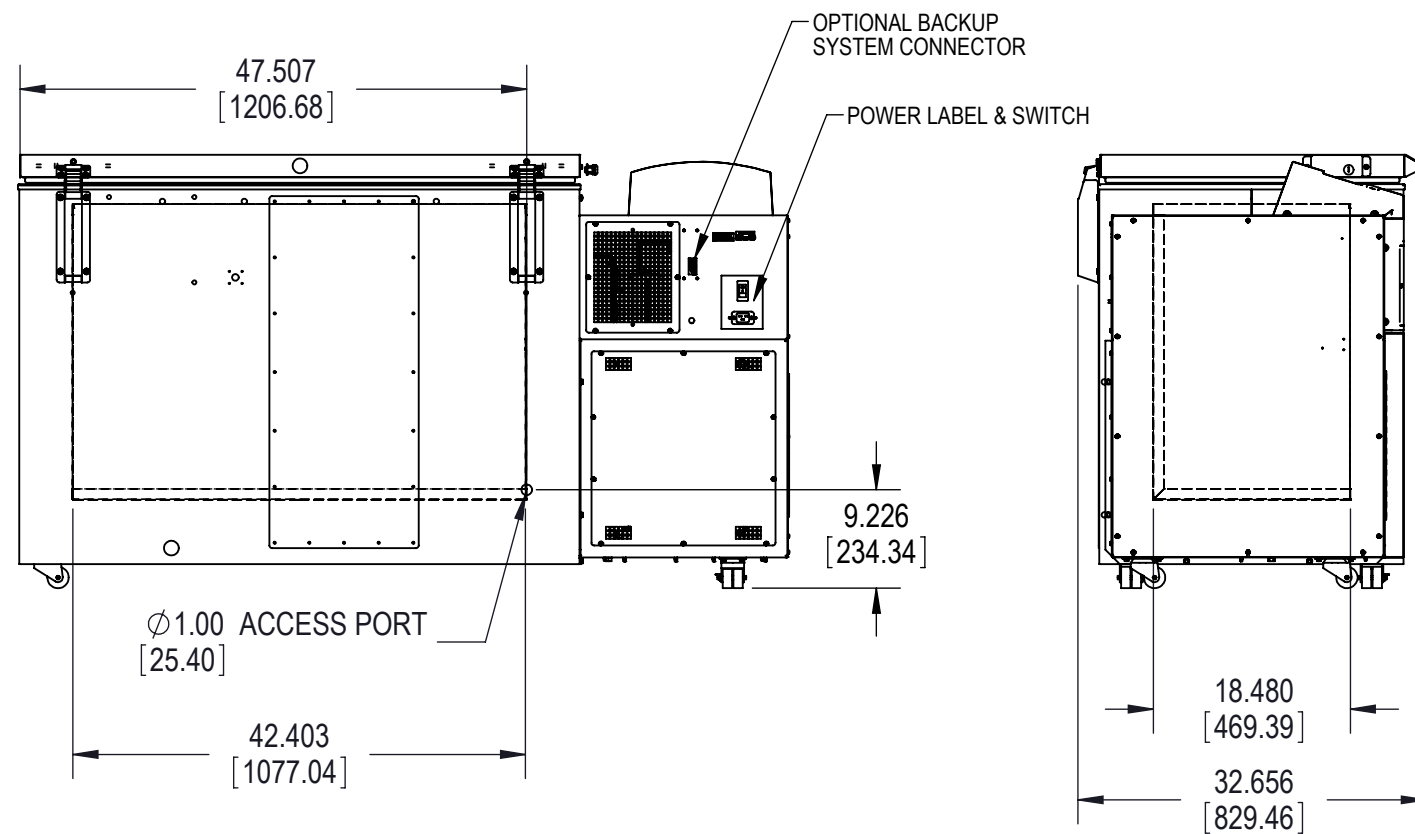
13 ft³ Chest ULT, Pull Down and Warm Up at 25 C

13 ft³ Chest ULT, -80C Cycle at 25 C Ambient

Test Unit Series or MSO Number:	18828-E-B
Avg Cabinet Temp at -80 C Cycle (C):	-75.6
Peak Variation from Setpoint (C):	+ 6.7 / + 2.1
Average Uniformity (C):	1.1
Average Stability (C):	3.7
Duty Cycle at -80C Setpoint (%):	42.6%
Cycle (on/off) rate at -80C (min):	15 / 20
Avg. energy consumption (kW-hr/day):	11.0
Avg. heat rejection rate (Btu/hr):	1565
Overall Pulldown Time (to -80C) (hrs):	2.7
Warmup Time (-80 to -50 C) (minutes):	217
BTU Capacity at -80C Setpoint (BTU/Hr)	320

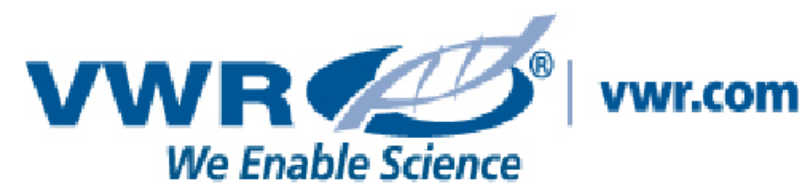
- 1) Performance is nominal and individual units may vary.
- 2) Freezer performance will differ due to product amount, product size and operating conditions.
- 3) Continuous product enhancements may, without notice, result in amendments or omissions to this specification. VWR International, LLC cannot accept responsibility for damage, injury, loss or expenses resulting from misapplication of the information herein.

* Manufacturer measured compressor capacity taken at standard -23°C/49°C (Evap/Cond) condition.



NOTE: DUAL DIMENSION IS INCH OVER METRIC

DO NOT USE FOR ENGINEERING PURPOSE SUBJECT TO CHANGE WITHOUT NOTICE



12.7 CU FT, -86 °C CHEST FREEZER