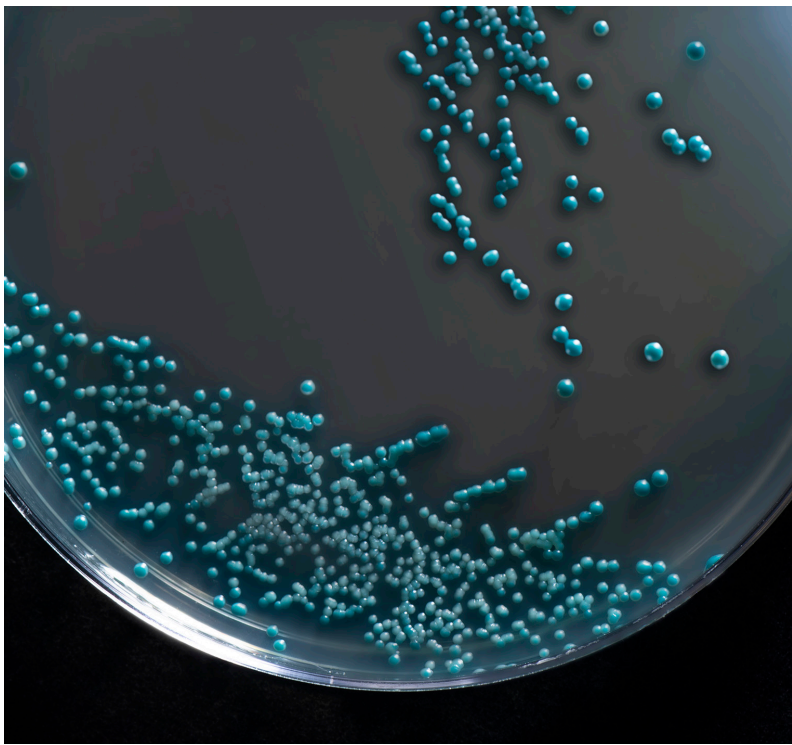


CANNABIS MICROBIOLOGY

PATHOGEN DETECTION • ENVIRONMENTAL MONITORING



order on
VWR.COM



01151956

DILUENTS

Buffered Peptone Water

For increasing the recovery of injured *Salmonella* spp.

16x125mm tube, 10ml fill, 20/pk 89407-438

Dilu-Lok™, Gamma Irradiated, 90ml fill, 50/pk 89407-096

500ml polycarbonate bottle, 400ml fill, 10/pk 89407-434



Butterfield's Phosphate Buffer

For the preparation of dilutions for plate count and other laboratory tests.

16x125mm Tube, 9.9ml fill, 20/pk 89407-410

16x125mm Tube, 9ml fill, 20/pk 89407-408

Dilu-Lok™, 90ml fill, 50/pk 89407-110

Dilu-Lok™, 99ml fill, 50/pk 89407-112

500ml polycarbonate bottle, 500ml fill, 10/pk 89407-414

Deionized Sterile Water

For general laboratory use and for the preparation of dilutions and suspensions.

Dilu-Lok™, 90ml fill, 50/pk 89407-100

Dilu-Lok™, 99ml fill, 50/pk 89407-102

With Tween® 80, 0.1%, 125ml PC bottle, 100ml fill, 16/pk 10436-332

1L polypropylene bottle, 1000ml fill, 10/pk 75814-006

Help break down your oily or waxy hydrophobic samples with Tween®, a lipophilic surfactant.

Tween® 80

General purpose surfactant.

500ml polypropylene bottle, 500ml fill, each 89408-142

DILUSHAKER™ AND DILUCUP™

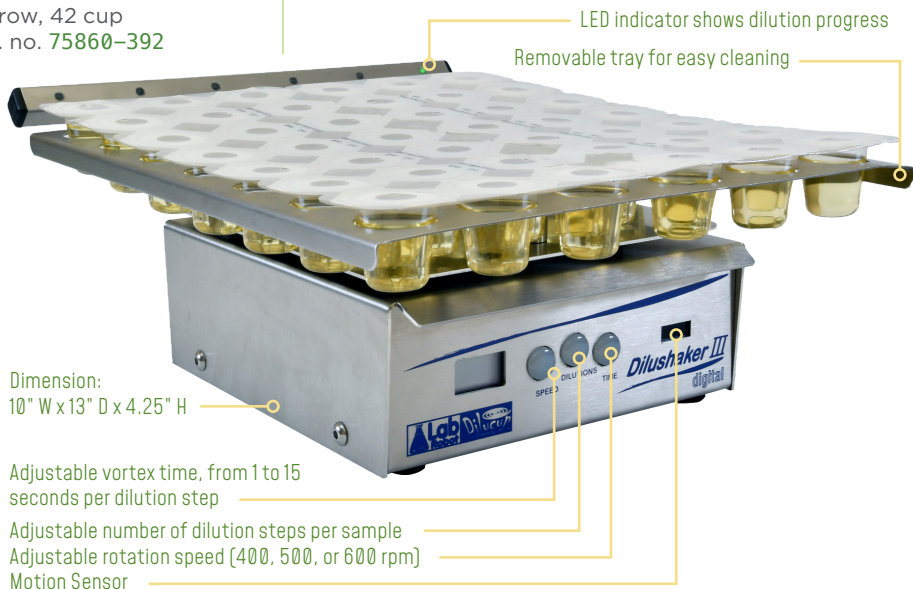
Dilushaker III™

Automated Serial Dilution

Six row, 42 cup

Cat. no. 75860-392

Precision and speed in the lab at your fingertips! The Dilushaker III™ is an orbital shaker that vortexes each diluent the same way, every time, with no spill over!



Dilucup™ Elegance

Dilucup™ Elegance saves time and money spent on preparing your own dilution vials!



Custom diluents available in bulk orders

NaCl (Saline Solution)

- pH: 7,0 ± 0,2
 - Volume: 9ml ± 2
 - 7x3 cups, 9ml fill
- 42 cups 75860-414

BPW (Buffered Peptone Water)

- pH: 7,0 ± 0,2
 - Volume: 9 ml ± 2 %
 - 7x3 cups, 9ml fill
- 42 cups 75860-418

PREPARED PLATES



Dichloran Rose Bengal Chloramphenicol (DRBC) Agar

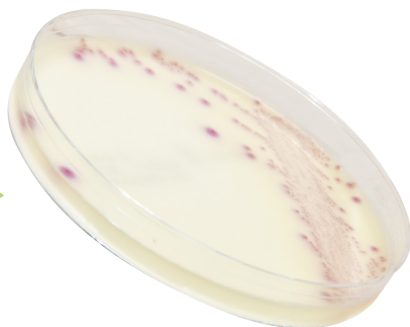
For use in the cultivation of yeast and mold. 15x100mm plate, 26ml fill, 10/pk

89407-492

HardyCHROM™ O157

A selective and differential medium recommended for the isolation of *E. coli* O157 from food and environmental sources. Not intended for human diagnostic use. O157 provides an initial screen intended to isolate colonies for further testing. 15x100mm plate, 10/pk

89407-256



HardyCHROM™ Salmonella

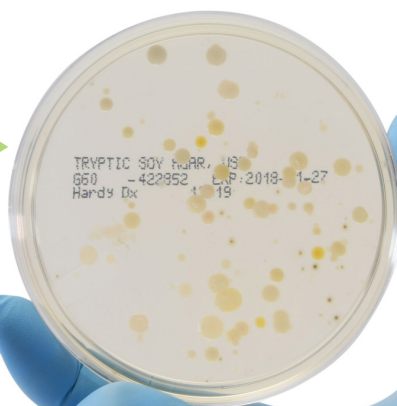
A chromogenic medium recommended for the selective isolation and differentiation of *Salmonella* spp. from other members of the Enterobacteriaceae family based on colony color. Selective agents inhibit the growth of Gram-positive organisms. 15x100mm plate, 10/pk

89407-258

Tryptic Soy Agar (TSA), USP

For the cultivation of microorganisms. Also known as Soybean-Casein Digest Agar. 15x100mm plate, 10/pk

89407-330



Since 1980, Hardy Diagnostics has grown to manufacture an extensive selection of prepared media products which are packaged in plates, tubes, bottles, bags, and flasks. Our products go through rigorous and extensive QC testing. Lot specific Certificates of Analysis are available at HardyDiagnostics.com.



Testing for:	Medium	Cat. no.
General Growth	Blood Agar Plate, 5% Sheep Blood in Tryptic Soy Agar	89405-024
	Tryptic Soy Agar (TSA), USP	89407-330
E. coli / STEC / Bile Tolerant Gram Negative Bacteria	HardyCHROM™ O157	89407-256
	HardyCHROM™ ECC (<i>E. coli</i> and Coliforms)	89407-254
	SHIBAM Medium	76121-390
	Stx (Shiga-Toxin) Induction Broth	76177-594
	Violet Red Bile Agar	89407-346
	EMB Levine Agar (Eosin Methylene Blue)	89407-238
	MacConkey Broth (Dehydrated Format)	89405-638
	MacConkey Agar (Dehydrated Format)	89405-630
	EE Broth Mossel, USP	10135-896
Listeria	HardyCHROM™ Listeria	89407-264
Salmonella	HardyCHROM™ Salmonella	89407-258
	Rappaport-Vassiliadis Broth, USP	89407-854
	Rappaport-Vassiliadis Salmonella Enrichment Broth (Dehydrated Format)	89406-798
	Xylose Lysine Deoxycholate (XLD) Agar, USP	89407-340
<i>Staphylococcus aureus</i>	HardyCHROM™ Staph aureus	89407-260
	Mannitol Salt Agar (MSA) (Dehydrated Format)	89405-678
Yeast, Mold, and Fungi	Dichloran Rose Bengal Chloramphenicol (DRBC) Agar	89407-492
	Malt Extract Agar	89407-712
	Potato Dextrose Agar, USP	89407-826
	Potato Dextrose Agar with Chloramphenicol	10789-406
	Sabdex (Sabouraud Dextrose) Agar with Chloramphenicol	52428-858
	Sabdex (Sabouraud Dextrose) Agar	89407-894
	Sabdex (Sabouraud Dextrose) Agar (Dehydrated Format)	89406-000

CompactDry™

Best Seller!

The CompactDry™ plate line presents a variety of organism-specific or total count tests, packaged nicely in a sophisticated and sturdy cassette.

Self-Diffusing Media

Stackable

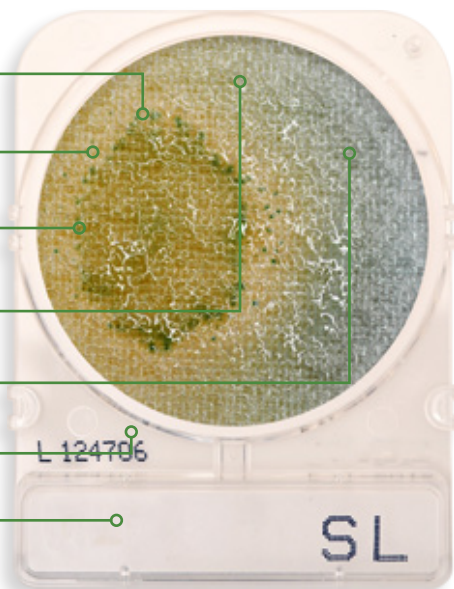
Removable Lid

Colonies easy to pick and subculture

Room Temp Storage and Long Shelf Life

Easy to Pick Up

Write-on Area



CompactDry™ SL

Salmonella

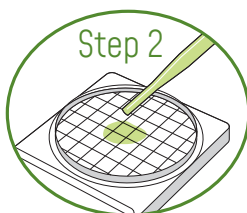
For the presumptive identification of *Salmonella* spp.
Growing colonies will appear green or blue-green and may have black centers.
100/pk **10789-458**

Procedure:



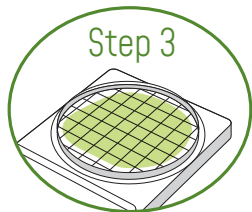
Step 1

Remove protective cap from CompactDry™ plate.



Step 2

Drop 1ml* of specimen (dilute if necessary) in the middle of dry sheet.



Step 3

Specimen diffuses automatically into the plate, transforming the dry medium to gel.



Step 4

Recap and incubate for prescribed time, then count the number of colonies.

*Please refer to your instructions for use for complete inoculation procedures.



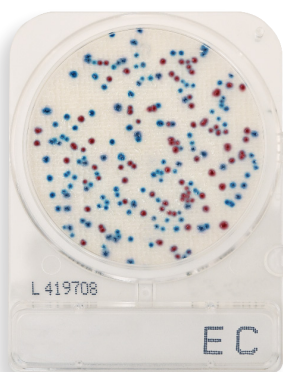
CompactDry™ YMR Yeast and Mold

For the isolation and enumeration of yeast and mold. Yeast colonies will appear blue, and molds will form cottony colonies with characteristic colors. Incubation time: 48-72 hrs. 100/pk **76076-714**

CompactDry™ YM

Yeast and Mold

Incubation time: 3-5 days. 100/pk **10145-972**



CompactDry™ EC

E. coli and Coliforms

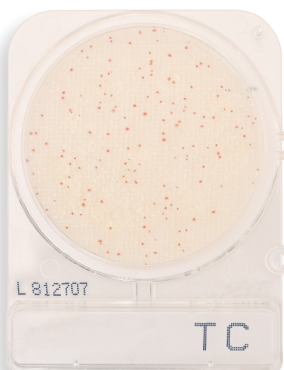
For the isolation and enumeration of coliforms and *E. coli*. Coliform colonies will appear pink-purple, and *E. coli* colonies appear blue. 100/pk **10145-954**



CompactDry™ ETB

Enterobacteriaceae

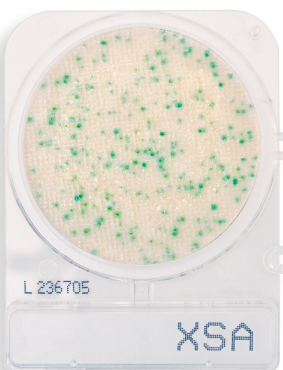
For the isolation and enumeration of *Enterobacteriaceae* that will appear red in color. Genera of *Enterobacteriaceae* consists of: *Citrobacter*, *Enterobacter*, *Escherichia*, *Klebsiella*, *Morganella*, *Proteus*, *Salmonella*, *Serratia*, *Shigella*, *Yersinia* and more. 100/pk **10753-986**



CompactDry™ TC

Total Count

For total aerobic viable bacterial count. Growing colonies will appear red. 100/pk **10145-968**



CompactDry™ XSA

Staphylococcus aureus

For the selective growth, enumeration, and differentiation of *Staphylococcus aureus*. Growing colonies will appear Light blue to blue. 100/pk **10145-970**



CompactDry™ LS

Listeria

For the selective growth, presumptive identification, and enumeration of *Listeria* spp. Growing colonies will appear blue. 100/pk **10789-408**

AUTOMATED COLONY COUNTER



The Wizard CompactDry™ Reader, a small instrument that will make a big impact on reducing the time spent counting colonies by hand.

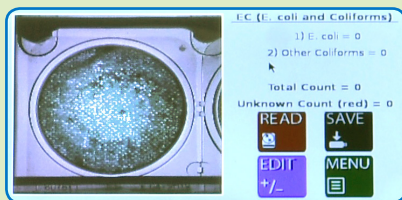


Easy-to-use: Flip the switch, select your configuration, insert your CompactDry™ plate(s), select read, and save your results! See how fast that was?

Designed exclusively for CompactDry™

CONSISTENCY WHERE IT COUNTS

The Wizard™ brings precise colony counts to each and every set of plates, eliminating the risk of human error and inconsistency.



YOUR COLONY COUNT IN SECONDS

Save technician hours on this tedious task to maximize your throughput possibilities. Does both colony counts and chromogenic reads.

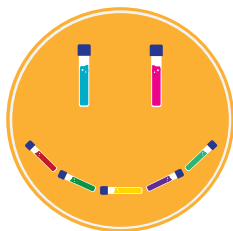
SIMPLE IMPLEMENTATION

Easy-to-understand instructions make for simple Standard Operating Procedures, allowing you to easily train your team and begin utilizing automation for your colony counts.

COMPLIANCE MADE EASY

Make data compliance easy in any lab with several ways to save your test results. Transfer to LIMS software, save directly to USB, or print your data.

Find your happy medium.



Your technicians will thank you!

ENVIRONMENTAL MONITORING

SURFACE



Why perform surface sampling?

Whether you come from years of GMP and HACCP experience or are just learning the basics, it is crucial that companies in the cannabis industry gain an understanding of their microbial environments. This intuitive and straightforward surface sampling process allows you to monitor your environment, keep your customers safe, and greatly reduce risk of contamination. Simple swab tests will give you a read out on the cleanliness of your environment in seconds. Don't get caught empty handed, start understanding your critical control points today!

How it Works



3. Measure

4. Report



See page 19

ENVIRONMENTAL MONITORING

AIR



Why perform air sampling?

Stay ahead of mold in your cultivation and processing environments with active impact air sampling. TRIO.BAS™ offers the best solution on the market for monitoring your air quality and brings GMP/USP standards to your facility. See trends and changes in your environment at a moment's notice by bringing air quality testing in house.



1. Insert plate



2. Select Pre-set

3. Begin sampling

4. Analyze & record



See page 21

SURFACE SAMPLING

EnSURE

Hand-held Luminometer
for surface sampling

EnSURE™ is a rapid surface monitoring system that uses one instrument platform to collect, analyze, and report data from multiple critical control points. Using state-of-the-art technology and patented designs, the EnSURE™ system is a simple-to-use, flexible, and accurate ATP monitoring system and the perfect fit for your HACCP and regulatory compliance SOPs.

Functional Features:

- Results in 15 seconds
- 20 programmable test plans
- 250 programmable locations per test plan
- Location name identification on screen
- Programmable user identification
- Ability to store 2,000 results

Key Design Features:

- Protected USB connection
- Removable read chamber for cleaning
- Durable case

Results in seconds!

Cat no. 10145-974

Ask about our FREE
SureTrend™ Data
Analysis software



Best Seller!

UltraSnap™ ATP Surface Test

UltraSnap™ is a user-friendly, all-in-one ATP sampling test swab used with Hygiena luminometers. 100/bx

10142-318



ENVIRONMENTAL PATHOGEN DETECTION

EnviroTrans™ ENVIRONMENTAL SWAB RINSE KIT

This ready-to-use swab and tube is pre-filled with your choice of three sampling diluents.

EnviroTrans™ Neutralizing Buffer

2ml, 20/box 89407-764
5ml, 20/box 89407-766

EnviroTrans™ Neutralizing Saline

5ml, 20/box 89407-512

For neutralization of bactericidal and bacteriostatic effects of chlorine and quaternary ammonium compounds to facilitate the survival of organisms from the sampling surface.



EnviroTrans™ Letheen Broth

5ml, 20/box 89407-672

Recommended by AOAC International for evaluating the bactericidal activity of quaternary ammonium compounds and supports growth of a variety of organisms.

Collect and transport your environmental samples from the surface to the lab efficiently and easily with Envirotrans™. Take a 1ml sample and inoculate your CompactDry™ plate!



Works great with
CompactDry™!



DUO

Stop mold sporulation where it starts with an impact air sampling protocol for your facility. Sample several areas quickly and efficiently, and grow your samples on our quality prepared media for the best results of your air quality.

- Two aspirating heads with easy manipulation bayonet closure
- Save sampling time by doubling the aspirated volume of air
- Manual or automatic operations
- Ergonomic and balanced design is lighter than industry counterparts
- Programmable for simultaneous or interval aspirating times
- No plugs or external connections
- Connection free induction battery charger
- Two aspirating heads for sampling on separate plates to determine bacterial and yeast/mold counts

Cat no. **76169-646**



**Certifications: ISO14698, USP 797, USP 116,
EU GPL-GMP, ISO 17025.**

TRIO.BAS™ DUO Kit Contains:

Air sampler instrument, induction battery charger and cable, aspirating heads, cover heads, ROBUSTUS carrying case, and calibration certificates.

Testing gas lines for microbial growth? Use the
TRIO GAS attachment!

TRIO GAS

Microbiological High
Pressure Gas Sampler

Designed to test the presence of microorganisms in
compressed gas samples supplied from tanks and
pipes under pressure. Compatible with MONO or
MINI TRIO.BAS unit



Cat no. 76196-432

PREPARED MEDIA FOR AIR SAMPLING

Tryptic Soy Agar (TSA) With Lecithin and Tween® 80

For the cultivation of microorganisms
from environmental surfaces.

15x60mm contact plate,
10/pk

89408-026

Sabdex [Sabouraud Dextrose] Agar

For the selective isolation of fungi and
yeasts from clinical and nonclinical
specimens.

15x60mm contact plate,
10/pk

89407-878





800 932 5000 | VWR.COM

Prices and product details are current when published and subject to change without notice. | Certain products may be limited by federal, state, provincial, or local regulations. | VWR, part of Avantor, makes no claims or warranties concerning sustainable/green products. Any claims concerning sustainable/green products are the sole claims of the manufacturer and not those of VWR International, LLC and/or Avantor, Inc. or affiliates. All prices are in US dollars unless otherwise noted. Offers valid in US, void where prohibited by law or company policy, while supplies last. | Trademarks are owned by Avantor, Inc. or its affiliates, unless otherwise noted. | Visit vwr.com to view our privacy policy, trademark owners, and additional disclaimers. © 2019 Avantor, Inc. All rights reserved.