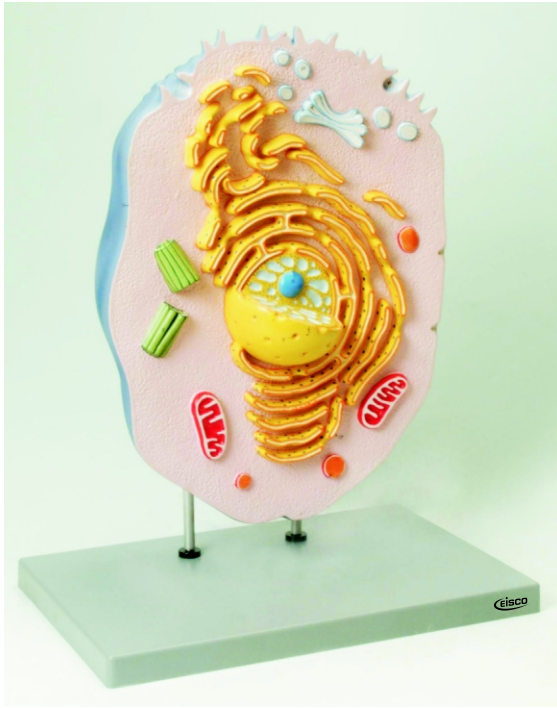




Cat. No. : ZM 0003A

Animal Cell



KEYCARD

- | | |
|--|-------------------------|
| 1. Nucleus | 9. Golgi apparatus |
| 2. Nuclear membrane | 10. Golgi vesicles |
| 3. Nuclear pore | 11. Centriole |
| 4. Chromatin | 12. Lysosomes |
| 5. Nucleoli | 13. Ribosome |
| 6. Rough endoplasmic reticulum
(with ribosomes) | 14. Pinacocytic vescile |
| 7. Smooth endoplasmic reticulum
(without ribosomes) | 15. Microvili |
| 8. Mitochondria | 16. Cytoplasm |
| | 17. Plasmalemma |



Cat. No. : ZM 0003A

Animal Cell



KEYCARD

- | | |
|--|-------------------------|
| 1. Nucleus | 9. Golgi apparatus |
| 2. Nuclear membrane | 10. Golgi vesicles |
| 3. Nuclear pore | 11. Centriole |
| 4. Chromatin | 12. Lysosomes |
| 5. Nucleoli | 13. Ribosome |
| 6. Rough endoplasmic reticulum
(with ribosomes) | 14. Pinacocytic vescile |
| 7. Smooth endoplasmic reticulum
(without ribosomes) | 15. Microvili |
| 8. Mitochondria | 16. Cytoplasm |
| | 17. Plasmalemma |