

## ECL Semi-dry Blotters

### TE 70, TE 77, TE 70 PWR, TE 77 PWR

ECL™ Semi-dry Blotters are designed to deliver outstanding electrophoretic transfer results using low current and voltage with a minimal amount of buffer.

- Units available with and without built-in power supplies to give maximum flexibility
- Complete, uniform electrotransfer of proteins from polyacrylamide gels in less than 1 h
- Minimal buffer use—just enough to saturate blotting papers and membranes
- Long-lasting perforated platinum-titanium and stainless steel electrodes for uniform, contamination-free transfers
- Semi-dry blotters validated with GE Healthcare ECL Western blotting systems



**Fig 1.** TE 77 PWR blotter.



## TE 70 and TE 77

The TE 70 accommodates gels up to 14 × 16 cm, such as from the SE 400 and SE 600 series.

The TE 77 accommodates gels up to 21 × 26 cm, or four mini-gels side-by-side.

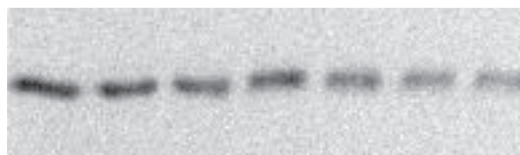
Multiple gels can be transferred at the same time by placing several small gels of the same thickness side by side, or by stacking two gels vertically in a multilayer stack.

The TE 70 and TE 77 have 4-mm shrouded high voltage leads that must be connected to an external power supply. They have safety circuits built into the instrument that limit the voltage to 30 V and the current to 0.5 A. The circuits protect the user from unnecessary electrical hazards.

## TE 70 PWR and TE 77 PWR

These two blotters, identical in size to their respective units above, are designed with a built-in power supply that supports transfer conditions up to 30 V and 0.5 A. This eliminates the need for an external power supply, as well as any adaptor issues.

The instruments also monitor the transfer stack resistance, and can stop a transfer if large changes indicate that the buffer is being depleted.



**Fig 2.** Dilution series of bovine serum albumin, blotted using the TE 77 PWR and processed with ECL Advance Western Blotting Reagents.

## Specifications

	TE 70	TE 77	TE 70 PWR	TE 77 PWR
Electrode size (cm)	14 × 16	21 × 26	14 × 16	21 × 26
Output Voltage (V) Current (A)	30 0.5	30 0.5	30 0.5	30 0.5
Inputs Voltage (V) Current (A) Frequency (Hz)			100–240 0.7 47–63	100–240 0.7 47–63

### Environmental operating conditions

Temperature	4–40 °C
Humidity	Up to 80%
Altitude	Up to 2000 m
Installation category	II
Pollution degree	2
Dimensions (W × H × D)	38 × 9 × 46 cm
Weight	Shipping, 6.8 kg Unit, 3.7 kg
Certifications	EN61010–1, UL61010–1, CSA C22.2 1010.1, EN 61326, CE

## Ordering information

Description	Code number
TE 70 PWR Semi-dry Transfer Unit, 14 × 16 cm	11-0013-41
TE 70 Semi-dry Transfer Unit, 14 × 16 cm	80-6210-34

(Includes 25 sheets of blotting paper, 50 sheets of cellophane, 2 solid masks, and masks for 7 × 8 cm and 14 × 16 cm gels.)

Description	Code number
TE 77 PWR Semi-dry Transfer Unit, 21 × 26 cm	11-0013-42
TE 77 Semi-dry Transfer Unit, 21 × 26 cm	80-6211-86

(Includes 25 sheets of blotting paper, 50 sheets of cellophane, solid mask, and mask for 14 × 16 cm gels.)

## Accessories

Description	Code number
<b>TE 70 and TE 70 PWR</b>	
Blotting paper, 14 × 16 cm, 25 sheets	80-6211-67
Cellophane, 20 × 35.5 cm, 50 sheets	80-6210-53
Masks, solid, 16.5 × 18.5 cm, 4	80-6210-72
<b>TE 77 and TE 77 PWR</b>	
Blotting paper, 21 × 26 cm, 25 sheets	80-6211-29
Cellophane, 34 × 44 cm, 50 sheets	80-6117-81
Masks, solid, 23 × 27.5 cm, 4	80-6212-05
Power Cord Kit (Includes transformer block and two power cords.)	28-4025-98
User manual, ECL Semi-dry Blotters	28-4025-91

<b>Asia Pacific</b>	Tel: +85 65 6 275 1830	Fax: +85 22 8 115 251
<b>Australasia</b>	Tel: + 61 2 9899 0999	Fax: +61 2 9899 7511
<b>Austria</b>	Tel: 01/57606-1619	Fax: 01/57606-1627
<b>Belgium</b>	Tel: 0800 73 888	Fax: 03 272 1637
<b>Canada</b>	Tel: 1 800 463 5800	Fax: 1 800 567 1008
<b>Central, East, &amp; South East Europe</b>	Tel: +43 1 982 3826	Fax: +43 1 985 8327
<b>Denmark</b>	Tel: 45 16 2400	Fax: 45 16 2424
<b>Finland &amp; Baltics</b>	Tel: +358 (0) 9 512 3940	Fax: +358 (0) 9 512 39439
<b>France</b>	Tel: 01 6935 6700	Fax: 01 6941 9677
<b>Germany</b>	Tel: 0761/4903-490	Fax: 0761/4903-405
<b>Italy</b>	Tel: 02 27322 1	Fax: 02 27302 212
<b>Japan</b>	Tel: +81 3 5331 9336	Fax: +81 3 5331 9370

<b>Latin America</b>	Tel: +55 11 3933 7300	Fax: + 55 11 3933 7304
<b>Middle East &amp; Africa</b>	Tel: +30 210 9600 687	Fax: +30 210 9600 693
<b>Netherlands</b>	Tel: 0165 580 410	Fax: 0165 580 401
<b>Norway</b>	Tel: 815 65 555	Fax: 815 65 666
<b>Portugal</b>	Tel: 21 417 7035	Fax: 21 417 3184
<b>Russia &amp; other C.I.S. &amp; N.I.S</b>	Tel: +7 (095) 232 0250 +7 (095) 956 1137	Fax: +7 (095) 230 6377
<b>South East Asia</b>	Tel: 60 3 8024 2080	Fax: 60 3 8024 2090
<b>Spain</b>	Tel: 93 594 49 50	Fax: 93 594 49 55
<b>Sweden</b>	Tel: 018 612 1900	Fax: 018 612 1910
<b>Switzerland</b>	Tel: 0848 8028 12	Fax: 0848 8028 13
<b>UK</b>	Tel: 0800 616928	Fax: 0800 616927
<b>USA</b>	Tel: +1 800 526 3593	Fax: +1 877 295 8102

[www.gehealthcare.com/eci](http://www.gehealthcare.com/eci)

## GE Healthcare Ltd

Amersham Place  
Little Chalfont  
Buckinghamshire  
HP7 9NA  
UK

General Electric Company reserves the right, subject to any regulatory approval if required, to make changes in specifications and features shown herein, or discontinue the product described at any time without notice or obligation. Contact your GE Representative for the most current information. © 2005 General Electric Company—All rights reserved. GE and GE Monogram are trademarks of General Electric Company. Amersham Biosciences and ECL are trademarks of GE Healthcare Limited.



imagination at work