

VWR®

Electronic Pipettors

01. LIGHTWEIGHT
ERGONOMICS

02. EASY-TO-USE

03. PRECISE AND RELIABLE



A full line of electronic pipettors

Available in Fifteen models covering volumes from 0.5µL to 1200µL including multi-channel pipettors.

EASE-OF-USE

Feature only two buttons to enable easy, one-handed programming and quick pipetting cycle start.

Choose your preferred mode using the push-button:

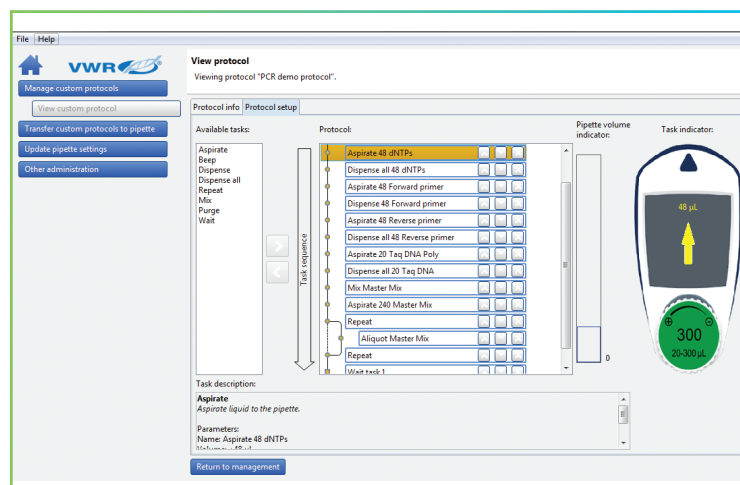
- Pipet (standard mode)
- Reverse
- Repetitive
- Mix
- Custom mode

LIGHTWEIGHT - PERFECTLY BALANCED

Requires virtually no force to significantly reduce RSI (Repetitive Strain Injury) associated with routine work.

CUSTOM MODE FOR SPECIFIC APPLICATION

Create, transfer, and store your own pipetting tasks using VWR® Protocol Builder Software.





features

AVAILABLE RANGE

- Five single channels (from 0.5µL to 1200µL)
- Ten multi-channels (from 0.5µL to 1200µL)

ONLY TWO BUTTONS AND FIVE PIPETTING MODES

Intuitive interface with five different modes:

- Pipet, repetitive, mix, reverse, and custom mode
- No need to change pipetting techniques
- Custom mode allows protocol creation

ERGONOMIC/COUNTERED SHAPE

- Comfortable in either left or right hand
- 360° rotating manifold

FULLY MOTORIZED PISTON DRIVE

- For an even and regular sample delivery across each channel

USE WHILE CHARGING

- Can be used while charging without compromising performance

SECURE TIP FIT/EJECTION

- Tip holders are designed for a secure tip fit and easy ejection thanks to a curved ejector bar

TWO-YEAR WARRANTY

- Pipettors are supplied with a Certificate of Conformity including a two-year warranty

Maximum Permissible Errors (Standard Pipetting Mode)

Description	Cat. No.	Volume Range, µL	Volume	VWR Electronic Pipettors		ISO 8655-2	
				Systematic Error, µL	Random Error, µL	Systematic Error, µL	Random Error, µL
Single Channel	10827-884	0.5-10	0.5	± 0.044	≤ 0.014	± 0.12	≤ 0.08
			1	± 0.028	≤ 0.013	± 0.12	≤ 0.08
			5	± 0.066	≤ 0.022	± 0.12	≤ 0.08
			10	± 0.088	≤ 0.028	± 0.12	≤ 0.08
Single Channel	10827-918	2-20	2	± 0.083	≤ 0.028	± 0.2	≤ 0.1
			10	± 0.110	≤ 0.039	± 0.2	≤ 0.1
			20	± 0.165	≤ 0.055	± 0.2	≤ 0.1
Single Channel	76035-944	5-100	5	± 0.39	≤ 0.11	± 0.8	≤ 0.3
			10	± 0.33	≤ 0.11	± 0.8	≤ 0.3
			50	± 0.42	≤ 0.13	± 0.8	≤ 0.3
			100	± 0.44	≤ 0.17	± 0.8	≤ 0.3
Single Channel	10827-920	20-300	20	± 0.88	≤ 0.18	± 4.0	≤ 1.5
			30	± 0.77	≤ 0.22	± 4.0	≤ 1.5
			150	± 0.99	≤ 0.25	± 4.0	≤ 1.5
			300	± 1.16	≤ 0.33	± 4.0	≤ 1.5
Single Channel	10827-922	100-1200	100	± 2.8	≤ 0.4	± 16	≤ 6.0
			120	± 2.6	≤ 0.4	± 16	≤ 6.0
			600	± 4.0	≤ 0.9	± 16	≤ 6.0
			1200	± 6.6	≤ 1.3	± 16	≤ 6.0
8-Channel 12-Channel	10827-924 10827-932	0.5-10	0.5	± 0.06	≤ 0.022	± 0.24	≤ 0.16
			1	± 0.04	≤ 0.022	± 0.24	≤ 0.16
			5	± 0.09	≤ 0.044	± 0.24	≤ 0.16
			10	± 0.11	≤ 0.066	± 0.24	≤ 0.16
8-Channel 12-Channel	10827-926 10827-934	1-20	1	± 0.09	≤ 0.055	± 0.4	≤ 0.2
			10	± 0.17	≤ 0.110	± 0.4	≤ 0.2
			20	± 0.28	≤ 0.132	± 0.4	≤ 0.2
8-Channel 12-Channel	76035-946 76034-606	5-100	10	± 0.28	≤ 0.15	± 1.6	≤ 0.6
			50	± 0.55	≤ 0.22	± 1.6	≤ 0.6
			100	± 0.88	≤ 0.28	± 1.6	≤ 0.6
8-Channel 12-Channel	10827-928 10827-936	10-300	10	± 1.10	≤ 0.20	± 8.0	≤ 3.0
			30	± 1.10	≤ 0.20	± 8.0	≤ 3.0
			150	± 1.65	≤ 0.413	± 8.0	≤ 3.0
			300	± 2.64	≤ 0.50	± 8.0	≤ 3.0
8-Channel 12-Channel	10827-930 10827-938	50-1200	50	± 4.4	≤ 0.8	± 32	≤ 12
			120	± 4.4	≤ 0.8	± 32	≤ 12
			600	± 6.6	≤ 1.7	± 32	≤ 12
			1200	± 10.6	≤ 2.0	± 32	≤ 12

Complete your equipment
with accessories

VWR® CAROUSEL PIPETTOR STAND + VWR® CHARGING STAND ADAPTER

The VWR Charging Stand Adapter has been designed to fit perfectly in the VWR Carousel Pipettor Stand. It combines two features in one, both holding and charging the pipettor at the same time.

Description	Cat. No.
VWR Carousel Pipettor Stand	10827-940
VWR Charging Stand Adapter	10827-942



800 932 5000 | VWR.COM

Prices and product details are current when published and subject to change without notice. | Certain products may be limited by federal, state, provincial, or local regulations. | VWR, part of Avantor, makes no claims or warranties concerning sustainable/green products. Any claims concerning sustainable/green products are the sole claims of the manufacturer and not those of VWR International, LLC and/or Avantor, Inc. or affiliates. All prices are in US dollars unless otherwise noted. Offers valid in US and Canada, void where prohibited by law or company policy, while supplies last. | Trademarks are owned by Avantor, Inc. or its affiliates, unless otherwise noted. | Visit vwr.com to view our privacy policy, trademark owners, and additional disclaimers. © 2019 Avantor, Inc. All rights reserved.