

VWR® Reusable Lab Coats and Scrubs



Lab coats

Poly/Cotton (80/20 blend)

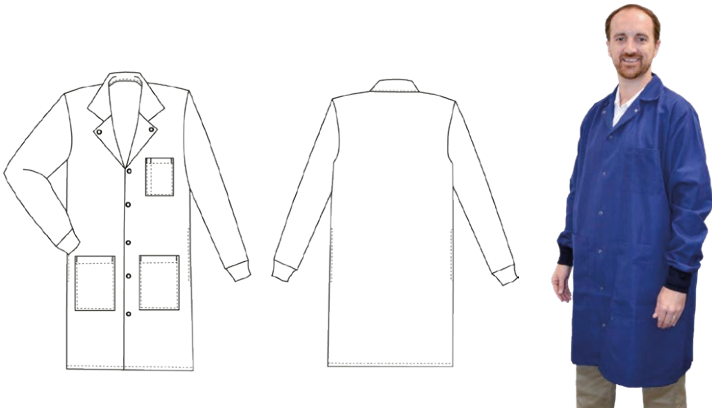
Available in a variety of styles and fabrics to suit various environments and maximize user comfort.

Lab coats; reusable - Cotton and Poly/Cotton lab coats

VWR® UNISEX TECHNOLOGY LAB COAT, REUSABLE

Unisex Technology lab coats are designed for use in research environments, quality-control laboratories, and industrial areas.

- Plain front with no embroidery
- Industrial and washable
- Durable
- Comfortable
- Poly/Cotton fabric (80/20 blend)



NAVY BLUE

This labcoat has 3 exterior pockets, knit cuff sleeves, and a snap front. Additionally, there is a lapel collar with an additional snap on the collar.

Color	Clothing size	Chest size	Unit	Cat. No.
Navy Blue	XXS	26 - 28"	Each/Case of 25	75819-574
Navy Blue	XS	30 - 32"	Each/Case of 25	75819-554
Navy Blue	S	34 - 36"	Each/Case of 25	75819-556
Navy Blue	M	38 - 40"	Each/Case of 25	75819-558
Navy Blue	L	42 - 44"	Each/Case of 25	75819-560
Navy Blue	XL	6 - 48"	Each/Case of 25	75819-562
Navy Blue	XXL	50 - 52"	Each/Case of 25	75819-564
Navy Blue	3XL	54 - 56"	Each/Case of 25	75819-566

The coats are available in white and navy blue. Sizes 4X Large and 5X Large are also available for special order. Contact your VWR Sales Representative for more information. Please allow up to four weeks for delivery.

The coats feature knit cuffs and a headphone port in the pocket. Additionally, the coats have side vents for easy access to pant pockets. The overall length is 99 cm (39"). Lab coats are manufactured from durable and comfortable Poly/Cotton fabric (80/20 blend) for long-term wear. These industrial, washable garments feature a quick-release five-snap front, one breast pocket with a pencil slot, and two oversized hip pockets large enough for a mini-tablet.



WHITE

This labcoat has 3 exterior pockets, knit cuff sleeves, and a snap front.

Color	Clothing size	Chest size	Unit	Cat. No.
White	XXS	26 - 28"	Each/Case of 25	10141-370
White	XS	30 - 32"	Each/Case of 25	10141-372
White	S	34 - 36"	Each/Case of 25	10141-374
White	M	38 - 40"	Each/Case of 25	10141-342
White	L	42 - 44"	Each/Case of 25	10141-344
White	XL	6 - 48"	Each/Case of 25	10141-346
White	XXL	50 - 52"	Each/Case of 25	10141-348
White	3XL	54 - 56"	Each/Case of 25	10141-350

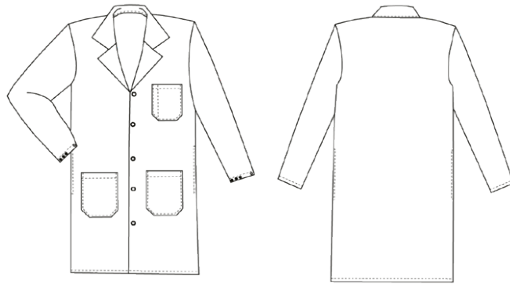
The coats are available in white and navy blue. Sizes 4X Large and 5X Large are also available for special order. Contact your VWR Sales Representative for more information. Please allow up to four weeks for delivery.

VWR® UNISEX 100% COTTON LAB COAT

These unisex cotton lab coats are made of breathable, comfortable, 100% cotton fabric and feature a quick-release five-snap front and snap cuffs.

- Quick-release five-snap front and snap cuffs
- Plain front with no embroidery
- Overall length is 99 cm (39")
- Poly/Cotton fabric (80/20 blend)

In addition, the 100% cotton lab coat features one breast pocket with a pencil slot, plus two oversized hip pockets. Side vents are also included for easy pants pocket access.



COTTON

This unisex labcoat has a snap front enclosure, 3 exterior pockets, and snap sleeve enclosures. Available in White.

Color	Clothing size	Chest size	Unit	Cat. No.
White	XS	26 - 28"	Each/Case of 25	10753-930
White	S	30 - 32"	Each/Case of 25	10753-932
White	M	34 - 36"	Each/Case of 25	10753-934
White	L	38 - 40"	Each/Case of 25	10753-936
White	XL	42 - 44"	Each/Case of 25	10753-938
White	XXL	46 - 48"	Each/Case of 25	10753-940
White	3XL	50 - 52"	Each/Case of 25	10753-904

Sizes XX-Small, 4X-Large, and 5X-Large are also available via special order. Contact your VWR Sales Representative for more information. Please allow up to 6 weeks for delivery of special order items.

VWR® WOMEN'S LAB COAT, REUSABLE

Fashionable lab coats for women feature a tapered back panel with a half belt.

- Tapered back panel with half belt
- Plain front, no embroidery
- Industrial launderable
- Durable and comfortable
- Poly/Cotton fabric (80/20 blend)

These industrial launderable garments feature a quick-release five-snap front, one breast pocket with a pencil slot, and two hip pockets. Additionally, there are side vents for easy pants pocket access, and adjustable snap cuffs. Overall length is 91.4cm (36"). Available in white only. Lab coats are manufactured from durable and comfortable Poly/Cotton (80/20 blend) fabric for long-term wear.

VWR® MEN'S LAB COAT, REUSABLE

Classic white lab coats for men are manufactured from durable and comfortable Poly/Cotton (80/20 blend) fabric for long-term wear.

- Durable, comfortable Poly/Cotton (80/20 blend) fabric
- Plain front, no embroidery
- Industrial launderable

Overall length is 99cm (39"). Available in white only.

These industrial launderable garments feature a quick-release five-snap front, one breast pocket with a pencil slot, and two oversized hip pockets (large enough for a mini-tablet). Additionally, there are side vents for easy pants pocket access.

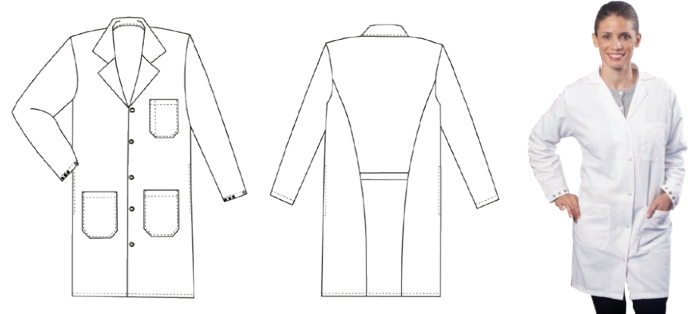


POLY/COTTON

This unisex labcoat has a snap front enclosure, 3 exterior pockets, and snap sleeve enclosures. Available in White.

Color	Clothing size	Chest size	Unit	Cat. No.
White	S	34 - 36"	Each/Case of 25	10141-300
White	M	38 - 40"	Each/Case of 25	10141-302
White	L	42 - 44"	Each/Case of 25	10141-304
White	XL	46 - 48"	Each/Case of 25	10141-306
White	XXL	50 - 52"	Each/Case of 25	10141-308
White	3XL	54 - 56"	Each/Case of 25	10141-310

Sizes XX-Small, X-Small, 4X-Large, and 5X-Large are also available for special order. Contact your VWR Sales Representative for more information. Please allow up to four weeks for delivery.



POLY/COTTON

This women's lab coat has a snap front enclosure, 3 exterior pockets, snap sleeve enclosures, and a princess-seam back belt. Available in White.

Color	Clothing size	Chest size	Unit	Cat. No.
White	XXS	26 - 28"	Each/Case of 25	10141-312
White	XS	30 - 32"	Each/Case of 25	10141-314
White	S	34 - 36"	Each/Case of 25	10141-316
White	M	38 - 40"	Each/Case of 25	10141-318
White	L	42 - 44"	Each/Case of 25	10141-320
White	XL	46 - 48"	Each/Case of 25	10141-322
White	XXL	50 - 52"	Each/Case of 25	10141-324

Sizes 3X-Large, 4X-Large, and 5X-Large are also available for special order. Contact your VWR Sales Representative for more information. Please allow up to four weeks for delivery.

Scrubs

65/35% Poly/Cotton

Poly/Cotton scrubs offer the durability of Polyester coupled with the comfort of Cotton with a 65/35% blend. This is ideal for use in research, quality control, and industrial environments.

Scrubs; reusable - Poly/Cotton

UNISEX V-NECK SCRUB TOPS, POLY/COTTON

Featuring a V-neck and chest pocket, this scrub top provides superior protection without sacrificing comfort.

- Made with 65% polyester and 35% cotton
- Color-coded label for sizing
- Soft and comfortable

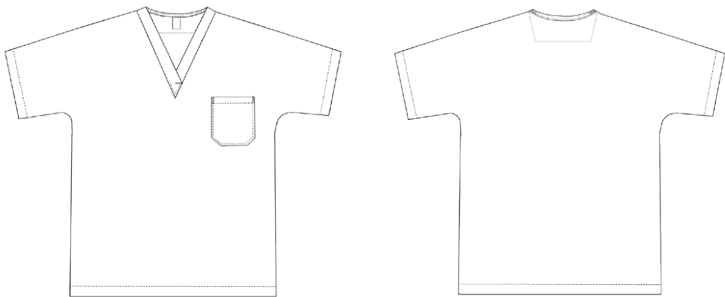
This scrub top provides an excellent base-layer of protection in any clinical setting.

SCRUB TOP POLY/COTTON

This scrub top is constructed with Poly/Cotton Fabric and one exterior pocket. Available in Gray and Navy.

Color	Clothing size	Unit	Cat. No.
Gray	XXS	Each/Case of 50	76268-926
Gray	XS	Each/Case of 50	76268-928
Gray	S	Each/Case of 50	10753-932
Gray	M	Each/Case of 50	10753-934
Gray	L	Each/Case of 50	10753-936
Gray	XL	Each/Case of 50	10753-938
Gray	XXL	Each/Case of 50	10753-940
Gray	3XL	Each/Case of 50	10753-904
Gray	4XL	Each	76268-942
Gray	5XL	Each	76268-944

Color	Clothing size	Unit	Cat. No.
Navy	XXS	Each/Case of 50	76268-946
Navy	XS	Each/Case of 50	76268-948
Navy	S	Each/Case of 50	76269-078
Navy	M	Each/Case of 50	76269-080
Navy	L	Each/Case of 50	76269-082
Navy	XL	Each/Case of 50	76269-084
Navy	XXL	Each/Case of 50	76269-086
Navy	3XL	Each/Case of 50	76269-088
Navy	4XL	Each	76269-090
Navy	5XL	Each	76269-092



Need to find the right workwear?

Now, the search of laboratory or work garments is easier with the Workwear Selector.

Try it!

VISIT
VWR.COM/
WORKWEAR



UNISEX SCRUB PANTS, POLY/COTTON

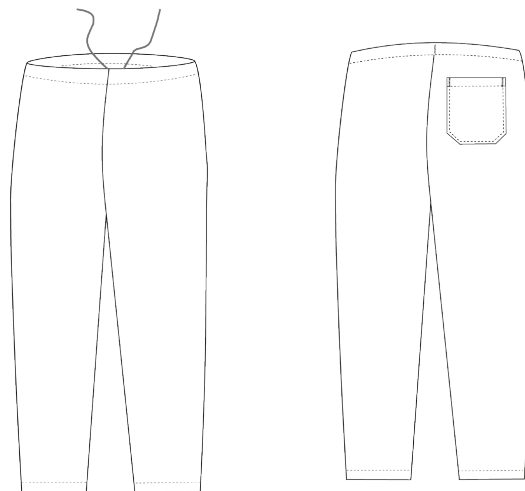
These scrub pants have a hip pocket, secure drawstring waist, and provide superior protection without sacrificing comfort.

- Made with 65% polyester, 35% cotton
- Color-coded label for sizing
- Soft and comfortable

These scrub pants provide an excellent base-layer of protection in any clinical setting.

SCRUB BOTTOMS POLY/COTTON

These scrub bottoms are constructed with Poly/Cotton Fabric, a drawstring waist, and one back pocket. Available in Gray and Navy.



Color	Clothing size	Unit	Cat. No.
Gray	XXS	Each/Case of 50	76268-870
Gray	XS	Each/Case of 50	76268-872
Gray	S	Each/Case of 50	76268-874
Gray	M	Each/Case of 50	76268-876
Gray	L	Each/Case of 50	76268-884
Gray	XL	Each/Case of 50	76268-886
Gray	XXL	Each/Case of 50	76268-888
Gray	3XL	Each/Case of 50	76268-890
Gray	4XL	Each	76268-892
Gray	5XL	Each	76268-894

Color	Clothing size	Unit	Cat. No.
Navy	XXS	Each/Case of 50	76268-896
Navy	XS	Each/Case of 50	76268-898
Navy	S	Each/Case of 50	76269-070
Navy	M	Each/Case of 50	76269-072
Navy	L	Each/Case of 50	76269-074
Navy	XL	Each/Case of 50	76269-076
Navy	XXL	Each/Case of 50	76268-904
Navy	3XL	Each/Case of 50	76268-906
Navy	4XL	Each	76268-908
Navy	5XL	Each	76268-910



VWR® Garment Recycling Solution

Easy-to-use recycling program provides a complete waste collection, shipment and recycling solution for used disposable apparel!



- Comprehensive recycling solution to reduce landfill waste
- Drives sustainable business practices
- Portion of sales donated to the VWR Foundation

All brands of disposable apparel are accepted as long as they are clean and do not harbor any contaminants

Disposable garments have been a significant waste stream to landfills and incinerators because they are made of a mixture of materials that makes them difficult to recycle. This program offers a convenient opportunity to recycle an abundant source of waste found in nearly every large pharmaceutical production facility by diverting typically hard-to-recycle products into new, permanent infrastructure with a lasting impact.

The plastic waste is recycled into resin that is used to make permanent infrastructure including composite decking, railroad ties and drainage pipes.

