



White Knight®
Engineered Products

9525 Monroe Road
Suite 100
Charlotte NC 28270

Phone: 704.542.6876 Fax: 704.910.8065 customerservice@wkep.com

Product Specification

Style Number: 12 P2 100S JRZY 01

Revision: E

PO # _____

Release Date: 11.30.15

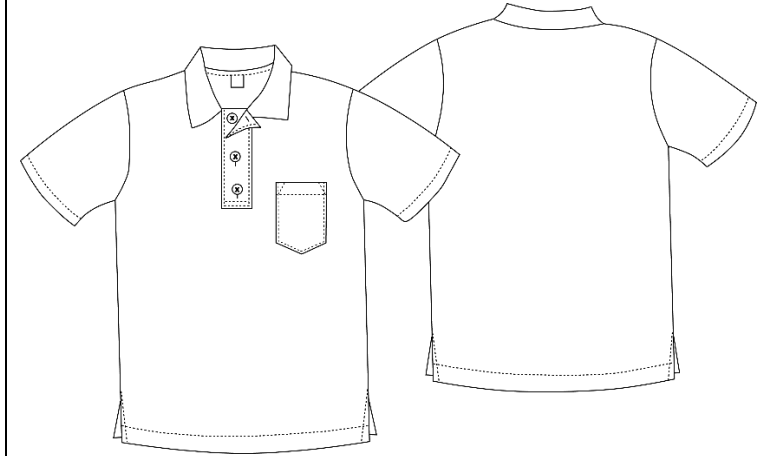
Inspected by _____

General Description

Garment Type	Polo shirt
Collar	Fold-Over with Self-Neck Tape 3/8" wide, top stitch 1/16" from edge
Sleeves	Short Sleeves
Sleeve Opening	Hemmed
Front Enclosure	3 Button Front Placket
Fabric	Jersey 100% Spun Poly
Thread	100% Polyester
Seams	Serge and Lockstitch
Stitches	10-12 per Inch

Construction Details

- Side Vents Measure 2.5" Front X 3.5" Back
- Hem Sleeves and Bottom To .0875"
- Neck Drops in Back .05"
- Collar Point in Center Front Is 2.75"
- Collar Point in Center Back Is 3.5"
- Placket is 7" Long by 1.5" Wide (Lining Inside Placket)
- Placket Box is .025"
- Buttons are Spaced 2.25" (First Buttonhole in Horizontal Position Centered on Placket, Other Buttonholes Centered on Placket in Vertical Position)
- Pocket is located 9" from high point of shoulder.
- Pocket is 5.25" in length and 4.625" wide with a 1" hem



Finished Measurements

Feature	S	M	L	XL	2XL	3XL	4XL	5XL	6XL	Tol +/-	Actual
Chest (1" below armhole)	19	21	23	25	27	29	31	33	35	0.75	
Waist	19	21	23	25	27	29	31	33	35	0.75	
Bottom	19	21	23	25	27	29	31	33	35	0.75	
Length-Front (High Point Shoulder)	29	30	31	32	33	34	35	36	37	0.75	
Length-Back (High Point Shoulder)	30	31	32	33	34	35	36	37	38	0.75	
Armhole (on curve)	10.375	10.875	11.375	11.875	12.375	12.875	13.375	13.875	14.375	0.375	
Shoulder to Shoulder (on seam)	17.25	18.75	20.25	21.75	23.25	24.75	26.25	27.75	29.25	0.5	
Sleeve Length (from shoulder seam)	9.25	9.75	10.25	10.75	11.25	11.75	12.25	12.75	13.25	0.5	
Sleeve Opening (at hem)	7.25	7.5	7.75	8	8.25	8.5	8.75	9	9.25	0.25	
Neck Drop Front (seam-seam)	2.375	2.375	2.75	2.75	3.125	3.125	3.125	3.125	3.125	0.25	
Neck Width (seam to seam)	6.375	6.375	7.125	7.125	7.875	7.875	7.875	7.875	7.875	0.375	
Collar Length	15.5	15.5	17	17	18.5	18.5	18.5	18.5	18.5	0.5	
Collar Length at Tape	16	16	17.5	17.5	19	19	19	20.5	20.5	0.5	

Longs	XLongs
+2" Body Length	+4" Body Length
+2" Sleeve Inseam	+4" Sleeve Inseam