



G-Biosciences, St Louis, MO. USA ♦ 1-800-628-7730 ♦ 1-314- 991-6034 ♦ technical@GBiosciences.com

PRODUCT DATA SHEET

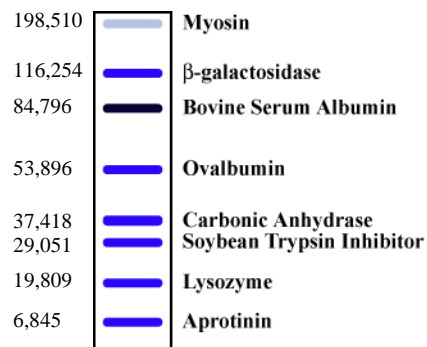
Ready-to-Screen Tissue BLOTS™ **Single Tissue Blot - Multiple Species**

Catalog #: TB30

Lot #: 090603L

Components: Protein blot of **Human, Mouse & Rat Normal Brain Tissue** samples arranged as follows:

Lane 1 Protein Marker*
Lane 2 Human Brain
Lane 3 Mouse Brain
Lane 4 Rat Brain



* Lot #: 310001998-BR

Size: 1 Blot

Storage Condition: 4° C

Methods Involved: The proteins were isolated from **brain tissue** of various species by preparing a tissue homogenate in the presence of protease inhibitors. Protein samples (50µg) were solubilized in SDS-lysis buffer and electrophoresed in a 15 well, 4-20% SDS-polyacrylamide gradient gel, followed by electroblotting on PVDF membrane.

Quality Control: Proteins isolated from each lot were run on 4-20% gel and stained with G-Biosciences *RapidStain™* to check for its quality. Actin antibody was used to test the separation and transfer of protein from each lot.

Instructions for Use: Remove the blot from the pouch and wash with an appropriate buffer (1X TBST or PBST) 1-2 times. Block the membrane with a protein blocking agent; e.g., G-Biosciences *NAP™*-Blocker or *BLOT-QuickBlocker™*, and incubate with the primary and secondary antibodies diluted in blocking solution, following the standard protocol. Develop the blot with chemiluminescent or chromogenic detection reagents for the detection of the specific protein.

Rev 11.17.08-SA/MM/IA



think proteins! think G-Biosciences!

www.GBiosciences.com